

Habitat Model for Species: Eastern Red Bat

Lasiurus borealis

[Distribution Map](#) [Habitat Map](#)

Landcover Category

0 - Comments

Choate and Fleharty, 1975

McClure, 1942

Shump and Shump, 1982

Hollander et al., 1987

Rainey and Stains, 1954

Downes, 1964

Mills, 1971

LaVal et al., 1977

Hall, 1923

[#KS GAP] 30 m edge of selected upland forest (2) adjacent to open habitats (17,18,20,22,24-33,38,40,41,44,60,70,71,82).

[#Reviewer]

Habitat Restrictions

Comments

commonly hangs up in trees and shrubs in riparian communities

roosts in American elm (*Ulmus americana*) almost twice the level of occurrence in town

red bats are solitary and roost mostly in trees and shrubs near or even on the ground; they commonly roost during the day in edge habitats adjacent to streams and open fields; red bats generally hibernate in trees in winter rather than in caves

1 red bat netted over a spring in a small, open canyon in panhandle of Texas

a red bat observed flying low along and over a creek; it landed on variety of plants including a dried weed over water, tree branch hanging over creek, and a tree at the edge of an open field

red bats observed hanging on bottom side of sunflowers (*Helianthus*) in Illinois

9 red bats found in 3 small limestone caves in Ohio

red bats foraged high above trees and pastures

red bats use hollow trees as roosting sites; also noticeably common near groves of catalpas (*Catalpa speciosa*) and papaws (*Asimina triloba*)

Choate : Add Chautauqua, Cowley, Hamilton, Harvey, Jackson, Labette, Leavenworth, Lyon, Stafford (10504)

02 - Oak-Hickory Forest

Constantine, 1966

red bats select roosts in trees in "edge" areas such as forest edge and wide fencerows; these sites bordered dense leafy crops such as corn or beans; trees used: *Ulmus americana* (41%), *Acer negundo* (33%), *Prunus americana* (10%), *A. saccharinum* (4%)

Baker and Ward, 1967

red bats were netted over a small pond alongside a gravel road passing through bottomland hardwoods

[#KS GAP] Map 30 m edge adjacent open habitats.

05 - Ash-Elm-Hackberry Floodplain Forest

Andersen and Fleharty, 1967

red bat prefers riparian habitats; further, these bats were reported hanging in wild plum (*Prunus americana*) thickets near a reservoir

06 - Cottonwood Floodplain Forest

Kunz et al., 1980

07 - Mixed Oak Floodplain Forest

Linsdale, 1928

red bat hanging on underside of leaf of sumac on lower part of bluff; another red bat with young found hanging on underside of leaf of sycamore tree near lake; another red bat found on leaf of redbud tree on lower part of bluff

09 - Mixed Oak Ravine Woodland

Linsdale, 1928

red bat hanging on underside of leaf of sumac on lower part of bluff; another red bat with young found hanging on underside of leaf of sycamore tree near lake; another red bat found on leaf of redbud tree on lower part of bluff

11 - Cottonwood Floodplain Woodland

Andersen and Fleharty, 1967

red bat prefers riparian habitats; further, these bats were reported hanging in wild plum (*Prunus americana*) thickets near a reservoir

81 - Urban Areas

Choate and Fleharty, 1975

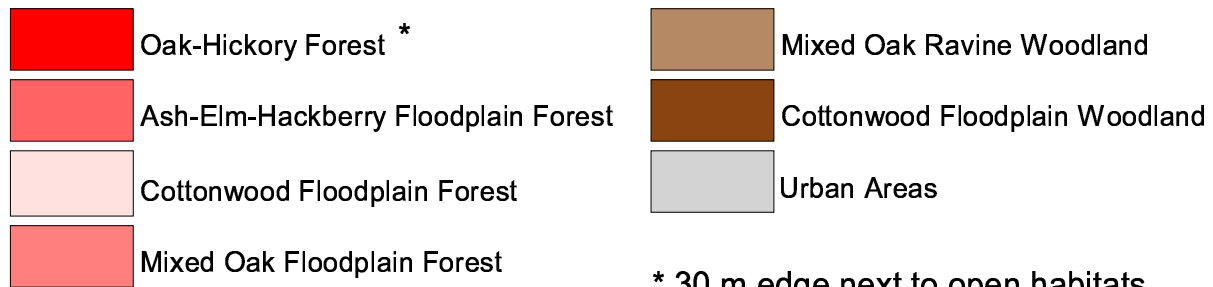
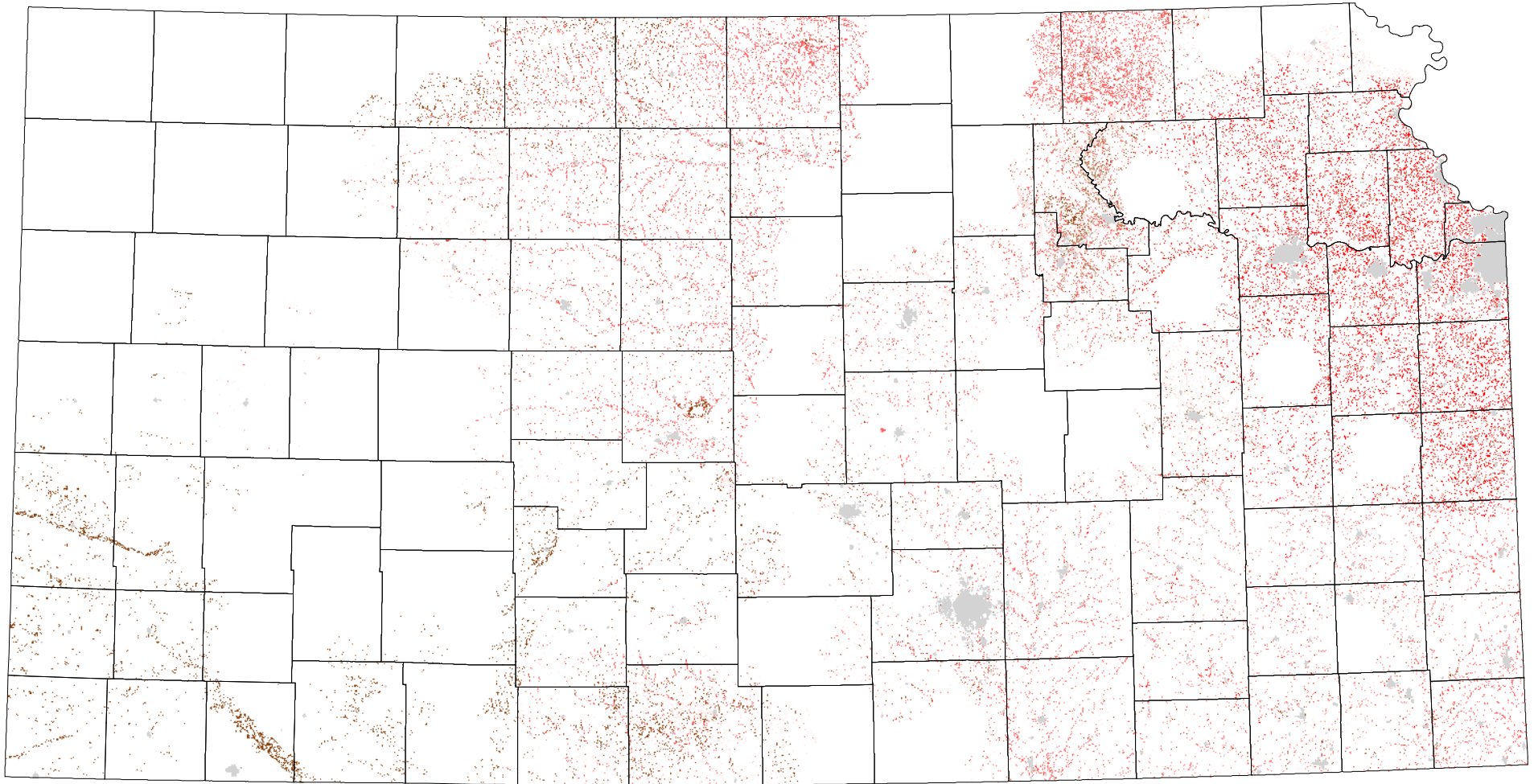
Shump and Shump, 1982

commonly hangs up in wooded areas around cities
red bats commonly roost during the day in edge habitats in urban areas

Reference List

1. Andersen, K. W. and Fleharty, E. D. Fort Hays Studies Science Series. 1967; 6, 1-45.
2. Baker, R. J. and Ward, C. M. Journal of Mammalogy. 1967; 48, 130-132.
3. Choate, J. R. and Fleharty, E. D. Occasional Papers, The Museum, Texas Tech University. 1975; 37, 1-80.
4. Constantine, D. G. Journal of Mammalogy. 1966; 47, 34-41.
5. Downes, W. L., Jr. Journal of Mammalogy. 1964; 45, 143-144.
6. Hall, E. R. Journal of Mammalogy. 1923; 4, 192-193.
7. Hollander, R. R.; Jones, J. K., Jr.; Manning, R. W., and Jones, C. The Texas Journal of Science. 1987; 39, 97-102.
8. Kunz, T. H.; Choate, J. R., and George, S. B. Transactions of the Kansas Academy of Science. 1980; 83, 74-77.
9. LaVal, R. K.; Clawson, R. L.; LaVal, M. L., and Caire, W. Journal of Mammalogy. 1977; 58, 592-599.
10. Linsdale, J. Journal of Mammalogy. 1928; 9, 140-146.
11. McClure, H. E. Journal of Mammalogy. 1942; 23, 430-434.
12. Mills, R. S. Journal of Mammalogy. 1971; 52, 625.
13. Rainey, D. G. and Stains, H. J. Transactions of the Kansas Academy of Science. 1954; 57, 85.
14. Shump, K. A., Jr. and Shump, A. U. Mammalian Species. 1982; 183, 1-6.

Eastern Red Bat



* 30 m edge next to open habitats