

# Habitat Model for Species: **Common Porcupine**

*Erethizon dorsatum*

[Distribution Map](#) [Habitat Map](#)

## Landcover Category

### **0 - Comments**

[#KS GAP]

Map 2 km edge of shrubland, prairie, or ag (12,20,22,44) adjacent selected forest or wooded habitats (1,5,6,9,11,51).

[#Reviewer]

### **01 - Maple-Basswood Forest**

Powell, 1994

Griesemer et al., 1998

### Habitat Restrictions

### **05 - Ash-Elm-Hackberry Floodplain Forest**

Choate and Fleharty, 1975

Hibbard, 1934

Pitts et al., 1987

Hendricks and Allard, 1988

Kamler and Gipson, 2000

Stricklan et al., 1995

### **06 - Cottonwood Floodplain Forest**

Woods, 1973

Stricklan et al., 1995

Hollander et al., 1987

### **09 - Mixed Oak Ravine Woodland**

Pitts et al., 1987

[#Reviewer]

### **11 - Cottonwood Floodplain Woodland**

Walker, 1978

Sweitzer, 1996

### Comments

Gipson : Add Geary Co.

dens detected in upland hardwood forest greatest daytime use in hemlock, red & white oak, and basswood in summer and greatest in red & white oak other times; birch, white ash, and aspen also used; buds, foliage, and mast made up 96% of diet (oaks, aspen, grasses, violets, milkweed, grapes)

few records, but likely found in riparian woodlands; visual sightings on Saline River, North Fork of Big Creek, and Smoky River

in 1930s, porcupine common in northwestern Kansas along Smoky, Solomon, and Republican rivers and their tributaries; they were reported along rivers and canyons in the hills where cottonwood (*Populus*) trees were found

only a few porcupines have been seen in the wooded areas on northern part of Ft. Riley

most important foods: *Ulmus americana*, *Populus deltoides*, *Rhus trilobata*, *Prunus virginiana*, *Rosa woodsii*; abundant species NOT fed on included *Fraxinus pennsylvanica*, *Acer negundo*, *Salix* spp. *Juniperus scopulorum*

riparian community of fragmented forest near the edge of the floodplain of the Kansas River

seem confined to vegetated riparian areas when away from forests; travel close to ground and remain in dense cover to move; in open regions move along draws and bush stream bottoms; alliance chosen from habitat description in Mammalian Species account

one porcupine found dead in a cottonwood (*Populus deltoides*) grove

only a few porcupines have been seen in the wooded areas on northern part of Ft. Riley

Gipson : Road kill specimen (young female) found on Hwy 177 in Geary Co. near the intersection with German Road. The skeleton is in his office. Habitat : narrow band of riparian mixed oak and hackberry in a mixed bluestem pasture.

porcupine observed in cottonwood (*Populus deltoides*) groves along Republican River; once common along this river, but numbers have declined

dens in rock outcroppings and juniper trees (*Juniperus osteosperma*); foraged in groves of buffalo-berry (*Shepherdia argentea*) and willow (*Salix*); chosen alliance includes *Juniperus* and *Salix* congeners

## **12 - Sandsage Shrubland**

Woods, 1973

seem confined to vegetated riparian areas when away from forests; travel close to ground and remain in dense cover to move; in open regions move along draws and bush stream bottoms; alliance chosen from habitat description in Mammalian Species account

Sweitzer and Berger, 1992

porcupines never observed sleeping in the open, but were in tree groves

[#KS GAP] 2 km edge adjacent selected forest or woodland habitats.

## **13 - Saltbush - Grama Shrubland - not mapped**

Sweitzer and Berger, 1992

porcupines never observed sleeping in the open, but were in tree groves

[#KS GAP] 2 km edge adjacent selected forest or woodland habitats.

## **20 - Western Wheatgrass Prairie**

Pefaur and Hoffmann, 1975

[#KS GAP] 2 km edge adjacent selected forest or woodland habitats.

## **22 - Mixed Prairie**

Kaufman, 1988

observed along edge of I-70, site not in or near any major wooded habitat--surrounding habitat was cultivated fields and pastures; porcupine likely moving between wooded habitats so consider this MARGINAL habitat

Kaufman and Kaufman, 1994

porcupine seen on northern edge of I-70, planted trees < 0.25 mile away and a wooded stream was < 0.75 mile away

Pefaur and Hoffmann, 1975

[#KS GAP] 2 km edge adjacent selected forest or woodland habitats.

## **44 - Cultivated Land**

Kaufman, 1988

observed along edge of I-70, site not in or near any major wooded habitat--surrounding habitat was cultivated fields and pastures; porcupine likely moving between wooded habitats so consider this MARGINAL habitat

[#KS GAP] 2 km edge adjacent selected forest or woodland habitats.

## **51 - Maple Floodplain Forest**

[#\*\*\*\*\*] Habitat not present within model parameters.

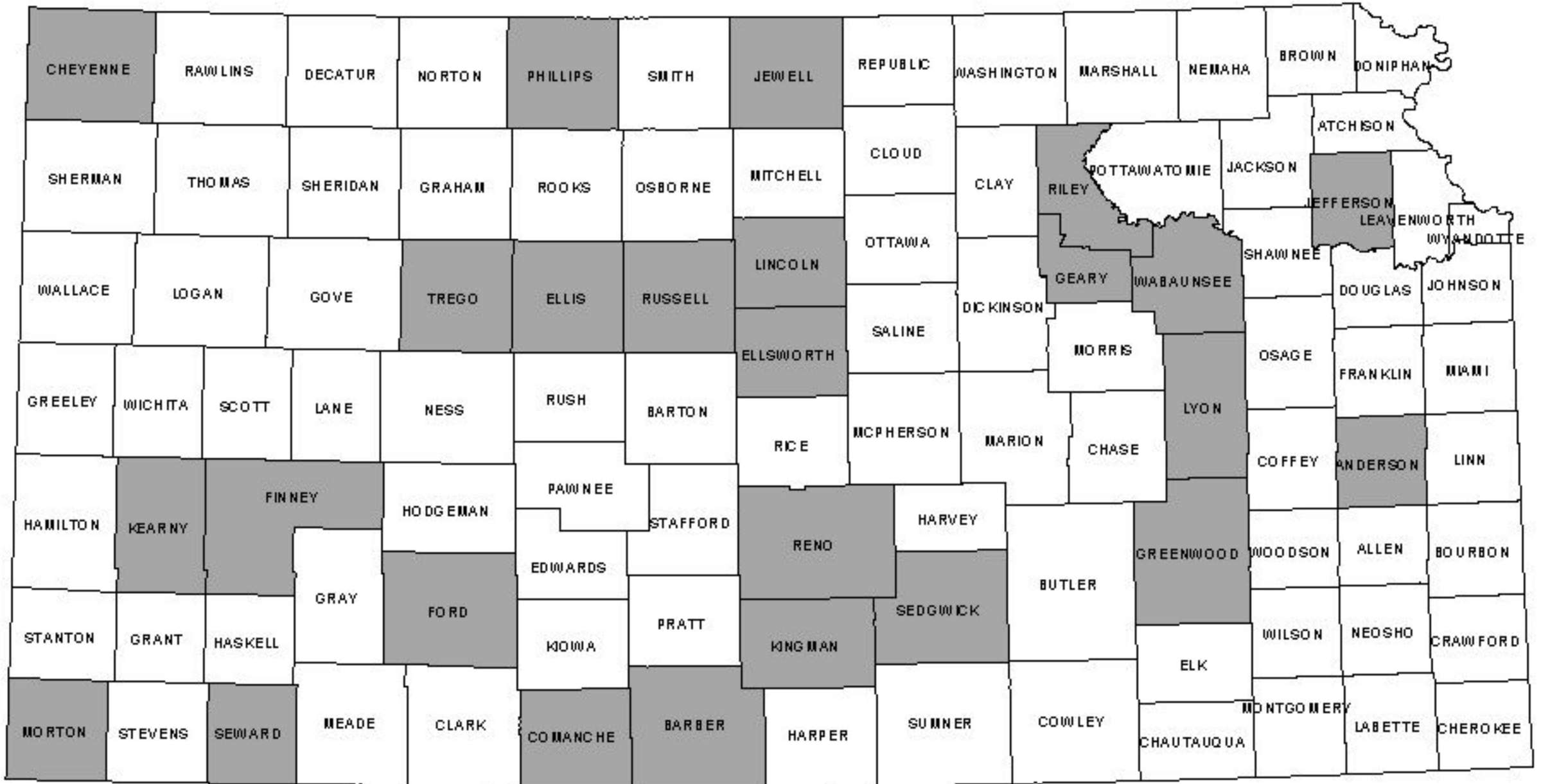
Griesemer et al., 1998

greatest daytime use in hemlock, red & white oak, and basswood in summer and greatest in red & white oak other times; birch, white ash, and aspen also used; buds, foliage, and mast made up 96% of diet (oaks, aspen, grasses, violets, milkweed, grapes)

### Reference List

1. Choate, J. R. and Fleharty, E. D. Occasional Papers, The Museum, Texas Tech University. 1975; 37, 1-80.
2. Griesemer, S. J.; Fuller, T. K., and Degraff, R. M. The American Midland Naturalist. 1998; 140, 271-279.
3. Hendricks, P. and Allard, H. F. The Prairie Naturalist. 1988; 20, 1-6.
4. Hibbard, C. W. Journal of Mammalogy. 1934; 15, 70-71.
5. Hollander, R. R.; Jones, J. K., Jr.; Manning, R. W., and Jones, C. The Texas Journal of Science. 1987; 39, 97-102.
6. Kamler, J. F. and Gipson, P. S. Transactions of the Kansas Academy of Science. 2000; 103, 55-57.
7. Kaufman, D. W. Transactions of the Kansas Academy of Science. 1988; 91, 189.
8. Kaufman, D. W. and Kaufman, G. A. Transactions of the Kansas Academy of Science. 1994; 97, 66-67.
9. Pefaur, J. E. and Hoffmann, R. S. Occasional Papers of the Museum of Natural History, The University of Kansas. 1975; 37, 1-27.
10. Pitts, R. M.; Levalley, M. J., and Klinger, S. Transactions of the Kansas Academy of Science. 1987; 90, 75-80.
11. Powell, R. A. Journal of Mammalogy. 1994; 75, 349-356.
12. Stricklan, D.; Flinders, J. T., and Cates, R. G. The Great Basin Naturalist. 1995; 55, 29-36.
13. Sweitzer, R. A. Journal of Mammalogy. 1996; 77, 1068-1077.
14. Sweitzer, R. A. and Berger, J. Ecology. 1992; 73, 867-875.
15. Walker, J. R. Transactions of the Kansas Academy of Science. 1978; 81, 185-229.
16. Woods, C. A. Mammalian Species. 1973; 29, 1-6.

## Common Porcupine



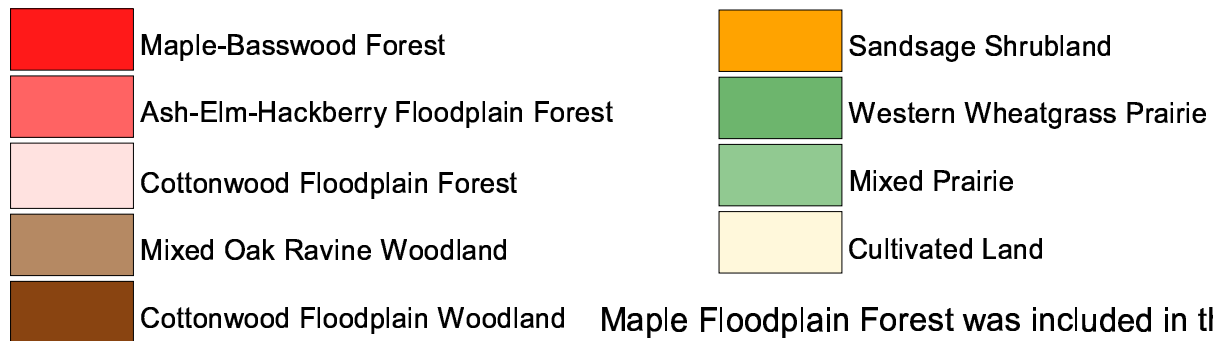
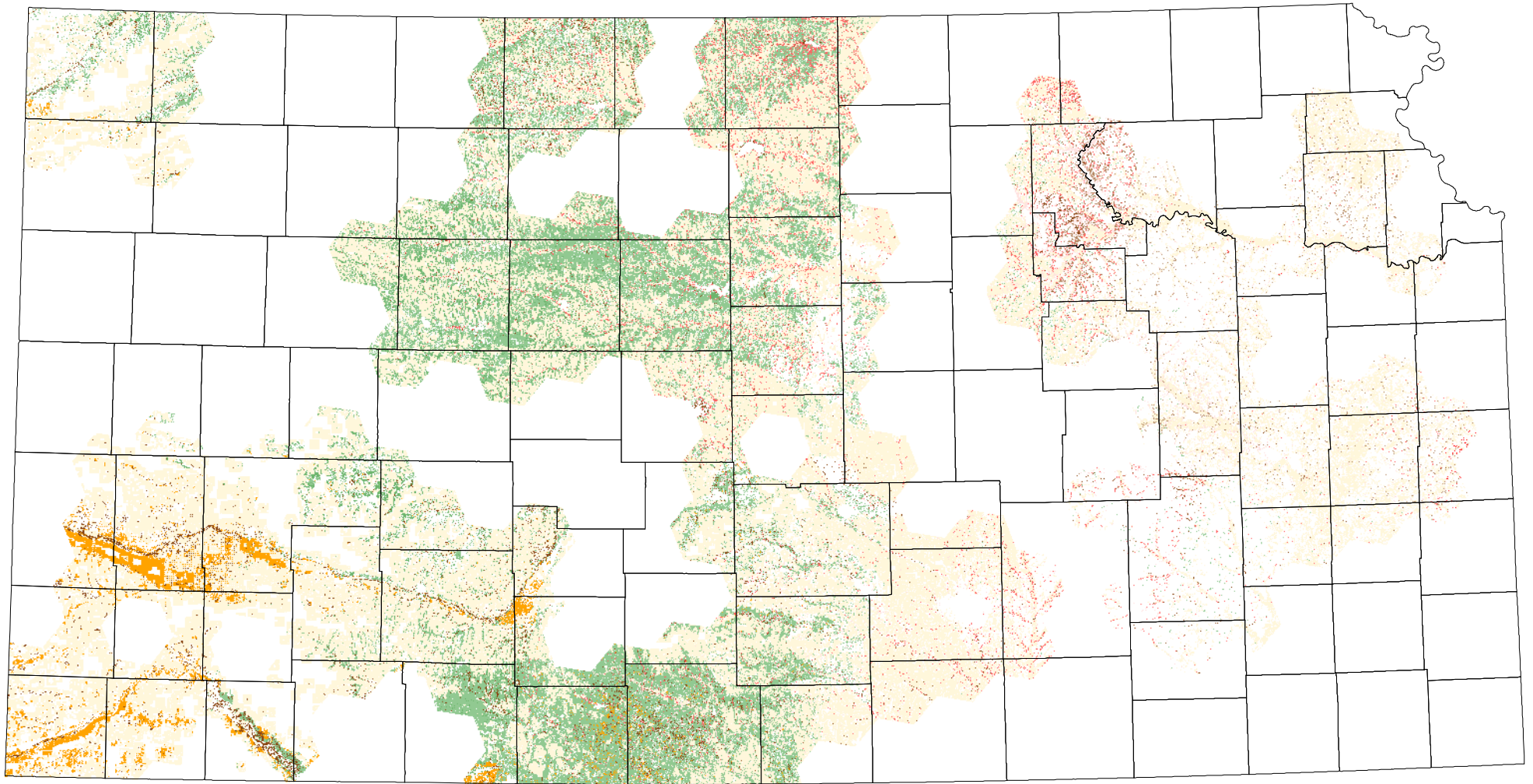
Recorded presence
  No records

Recorded distribution include specimen records and observations collected during 1941-2000 from University of Kansas Museum of Natural History, Sternberg Museum of Natural History, a large to mid-sized mammal survey conducted by regional biologists and conservation officers from the Kansas Department of Wildlife and Parks, and personal observations from professional mammalogists.

[Habitats](#)

[Habitat Map](#)

# Common Porcupine



Maple Floodplain Forest was included in the model, but the habitat was not mapped within the distribution of the porcupir