

# Habitat Model for Species: **Common Gray Fox**

*Urocyon cinereoargenteus*

[Distribution Map](#) [Habitat Map](#)

## Landcover Category

### **0 - Comments**

[#KS GAP]

Map 2 km edge of shrubland (14) adjacent selected forest or wooded habitats (1-11,50,55). Map 30 m edge of prairie, marsh or ag (17,18,20,22,25,33,40,41,44,60,71) adjacent selected forest or wooded habitats (1-11,50,55).

[#Reviewer]

### **01 - Maple-Basswood Forest**

Fritzell and Haroldson, 1982

### **02 - Oak-Hickory Forest**

Clarke et al., 1958

Fritzell and Haroldson, 1982

Scott, 1955

### **03 - Post Oak-Blackjack Oak Forest**

Clarke et al., 1958

Fritzell and Haroldson, 1982

### **04 - Pecan Floodplain Forest**

Zumbaugh and Choate, 1985

### **05 - Ash-Elm-Hackberry Floodplain Forest**

[#KS GAP]

### **06 - Cottonwood Floodplain Forest**

Choate and Krause, 1976

Clarke et al., 1958

Zumbaugh and Choate, 1985

### **07 - Mixed Oak Floodplain Forest**

Zumbaugh and Choate, 1985

## Comments

Choate : Map only 30 m edge of grasslands next to forest or wooded habitats.

species inhabits wooded, brushy, and rocky habitats, closely associated with deciduous forest; especially abundant when woodland and farm land are well interspersed; Sylvilagus most common prey; Mammalian Species account used to select alliance

species inhabits wooded, brushy, and rocky habitats, closely associated with deciduous forest; especially abundant when woodland and farm land are well interspersed; Sylvilagus most common prey; Mammalian Species account used to select alliance

species inhabits wooded, brushy, and rocky habitats, closely associated with deciduous forest; especially abundant when woodland and farm land are well interspersed; Sylvilagus most common prey; Mammalian Species account used to select alliance

occurred only in the forested areas of eastern Kansas before European settlement; Flint Hills a barrier to dispersal until recently; dispersal likely occurred via riparian communities along Kansas River and ribbon forests that border principal tributaries

selected from prey (eastern cottontail and white-footed mouse) habitats.

occurred only in the forested areas of eastern Kansas before European settlement; Flint Hills a barrier to dispersal until recently; dispersal likely occurred via riparian communities along Kansas River and ribbon forests that border principal tributaries

occurred only in the forested areas of eastern Kansas before European settlement; Flint Hills a barrier to dispersal until recently; dispersal likely occurred via riparian communities along Kansas River and ribbon forests that border principal tributaries

### **08 - Bur Oak Floodplain Woodland**

Zumbaugh and Choate, 1985

occurred only in the forested areas of eastern Kansas before European settlement; Flint Hills a barrier to dispersal until recently; dispersal likely occurred via riparian communities along Kansas River and ribbon forests that border principal tributaries

### **09 - Mixed Oak Ravine Woodland**

[#KS GAP]

selected from prey (eastern cottontail and white-footed mouse) habitats.

### **10 - Post Oak-Blackjack Oak Woodland**

Clarke et al., 1958

### **11 - Cottonwood Floodplain Woodland**

Choate and Krause, 1976

Zumbaugh and Choate, 1985

occurred only in the forested areas of eastern Kansas before European settlement; Flint Hills a barrier to dispersal until recently; dispersal likely occurred via riparian communities along Kansas River and ribbon forests that border principal tributaries

### **14 - Willow Shrubland**

[#KS GAP] 2 km edge adjacent selected forest or woodland habitats.

selected from prey (eastern cottontail and white-footed mouse) habitats.

### **17 - Tallgrass Prairie**

Getz et al., 1987

[#KS GAP] 30 m edge adjacent selected forest or woodland habitats.

### **18 - Sand Prairie**

[#KS GAP] 30 m edge adjacent selected forest or woodland habitats.

selected from prey (eastern cottontail and white-footed mouse) habitats.

### **20 - Western Wheatgrass Prairie**

[#KS GAP] 30 m edge adjacent selected forest or woodland habitats.

selected from prey (eastern cottontail and white-footed mouse) habitats.

### **22 - Mixed Prairie**

[#KS GAP] 30 m edge adjacent selected forest or woodland habitats.

selected from prey (eastern cottontail and white-footed mouse) habitats.

### **25 - Shortgrass Prairie**

[#KS GAP] 30 m edge adjacent selected forest or woodland habitats.

selected from prey (eastern cottontail and white-footed mouse) habitats.

### **33 - Cattail Marsh**

[#KS GAP] 30 m edge adjacent selected forest or woodland habitats.

selected from prey (eastern cottontail and white-footed mouse) habitats.

### **40 - Non-native Grassland**

[#KS GAP] 30 m edge adjacent selected forest or woodland habitats.

selected from prey (eastern cottontail and white-footed mouse) habitats.

### **41 - CRP**

[#KS GAP] 30 m edge adjacent selected forest or woodland habitats.

selected from prey (eastern cottontail and white-footed mouse) habitats.

### **44 - Cultivated Land**

Getz et al., 1987

Scott, 1955

[#KS GAP] 30 m edge adjacent selected forest or woodland habitats.

cropland was alfalfa  
corn (*Zea mays*) most abundant plant in diet, also some apples (*Pyrus* sp. and *Malus* sp.)

### **50 - Deciduous Forest-Mined Land**

[#KS GAP]

selected from prey (eastern cottontail and white-footed mouse) habitats.

### **55 - Deciduous Woodland**

Choate and Krause, 1976

Fritzell and Haroldson, 1982

species inhabits wooded, brushy, and rocky habitats, closely associated with deciduous forest; especially abundant when woodland and farm land are well interspersed; *Sylvilagus* most common prey; Mammalian Species account used to select alliance

### **60 - Mixed Prairie-Disturbed Land**

[#KS GAP] 30 m edge adjacent selected forest or woodland habitats.

selected from prey (eastern cottontail and white-footed mouse) habitats.

### **71 - Weedy Upland**

[#KS GAP] 30 m edge adjacent selected forest or woodland habitats.

selected from prey (eastern cottontail and white-footed mouse) habitats.

### **91 - Ozark Sandstone Glade / Prairie - not mapped**

[#KS GAP] 30 m edge adjacent selected forest or woodland habitats.

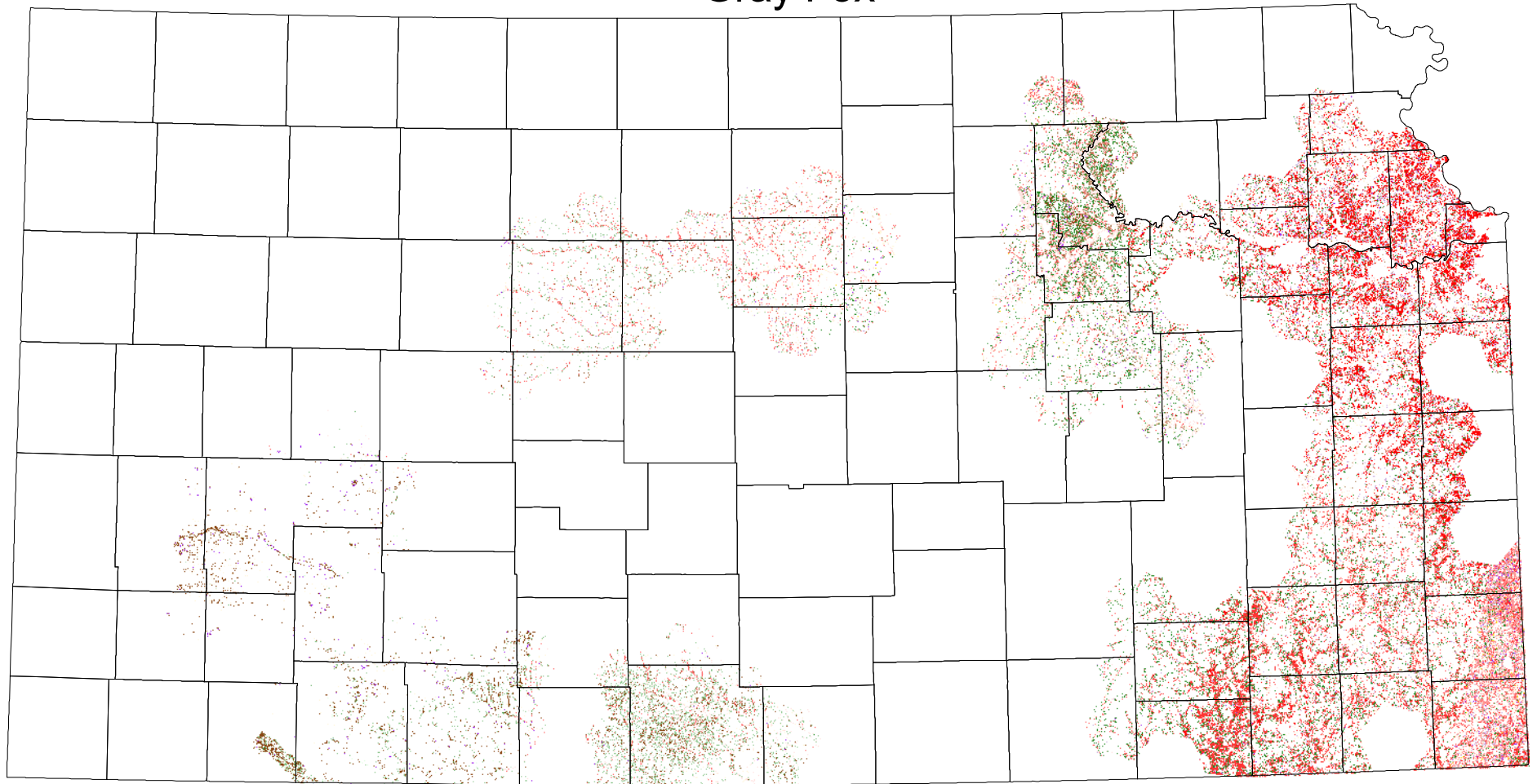
selected from prey (eastern cottontail and white-footed mouse) habitats.

### Reference List

1. Choate, J. R. and Krause, J. E. Transactions of the Kansas Academy of Science. 1976; 77, 231-235.
2. Clarke, R. F.; Breukelman, J., and Andrews, T. F. Transactions of the Kansas Academy of Science. 1958; 61, 165-194.
3. Fritzell, E. K. and Haroldson, K. J. Mammalian Species. 1982; 189, 1-8.
4. Getz, L. L.; Hofmann, B. J.; Klatt, B. J.; Verner, L.; Cole, F. R., and Lindroth, R. L. Canadian Journal of Zoology. 1987; 65, 1317-1325.
5. Scott, T. G. Ecology. 1955; 36, 366-367.
6. Zumbaugh, D. M. and Choate, J. R. Transactions of the Kansas Academy of Science. 1985; 88, 1-13.



# Gray Fox



\* Map 30 m edge next to selected forests and woodlands