

Habitat Model for Species: **American Badger**
Taxidea taxus

[Distribution Map](#) [Habitat Map](#)

Landcover Category

12 - Sandsage Shrubland

Powell, 1992
Ports and Ports, 1989
Stains and Baker, 1958

badgers prefer open plains, prairies, grazing lands, farm lands, and thinly wooded areas; avoid heavily timbered areas and swampy areas and are found almost exclusively on dry, rolling upland

13 - Saltbush - Grama Shrubland - not mapped

[#KS GAP]

selected open habitats from prey (black-tailed prairie dog, thirteen-lined ground squirrel, and prairie vole) habitats.

17 - Tallgrass Prairie

Finck et al., 1986

Stains and Baker, 1958

numerous burrows on breaks and slopes in prairie habitat

badgers prefer open plains, prairies, grazing lands, farm lands, and thinly wooded areas; avoid heavily timbered areas and swampy areas and are found almost exclusively on dry, rolling upland

19 - Sandstone Prairie - not mapped

[#KS GAP]

selected open habitats from prey (black-tailed prairie dog, thirteen-lined ground squirrel, and prairie vole) habitats.

20 - Western Wheatgrass Prairie

[#KS GAP]

selected open habitats from prey (black-tailed prairie dog, thirteen-lined ground squirrel, and prairie vole) habitats.

22 - Mixed Prairie

Andersen and Fleharty, 1967
Choate and Fleharty, 1975

uses roadside ditches adjacent to cultivated areas and upland prairie; badger nearly extirpated, but has since become common as a result of modern agriculture and construction of roads on section lines

Snead and Hendrickson, 1942
Pefaur and Hoffmann, 1975
Stains and Baker, 1958

badgers prefer open plains, prairies, grazing lands, farm lands, and thinly wooded areas; avoid heavily timbered areas and swampy areas and are found almost exclusively on dry, rolling upland

Halloran and Glass, 1959

badgers occur in rolling ranch country and evidence of their presence was found on an old prairie dog town

25 - Shortgrass Prairie

Choate and Fleharty, 1975

uses roadside ditches adjacent to cultivated areas and upland prairie; badger nearly extirpated, but has since become common as a result of modern agriculture and construction of roads on section lines

Smith, 1967
Powell, 1992
Tileston and Lechleitner, 1966
Stains and Baker, 1958

badgers prefer open plains, prairies, grazing lands, farm lands, and thinly wooded areas; avoid heavily timbered areas and swampy areas and are found almost exclusively on dry, rolling upland

36 - Cottonwood Savanna - not mapped

[#KS GAP]

selected open habitats from prey (black-tailed prairie dog, thirteen-lined ground squirrel, and prairie vole) habitats.

40 - Non-native Grassland

Errington, 1937

41 - CRP

[#KS GAP]

selected open habitats from prey (black-tailed prairie dog, thirteen-lined ground squirrel, and prairie vole) habitats.

44 - Cultivated Land

Choate and Fleharty, 1975

uses roadside ditches adjacent to cultivated areas and upland prairie; badger nearly extirpated, but has since become common as a result of modern agriculture and construction of roads on section lines

60 - Mixed Prairie-Disturbed Land

Andersen and Fleharty, 1967

disturbed habitat was banks of road ditches and gullies, plum (*Prunus americana*) thickets; these provided favorable digging places

Choate and Fleharty, 1975

uses roadside ditches adjacent to cultivated areas and upland prairie; badger nearly extirpated, but has since become common as a result of modern agriculture and construction of roads on section lines

Stains and Baker, 1958

badgers prefer open plains, prairies, grazing lands, farm lands, and thinly wooded areas; avoid heavily timbered areas and swampy areas and are found almost exclusively on dry, rolling upland

71 - Weedy Upland

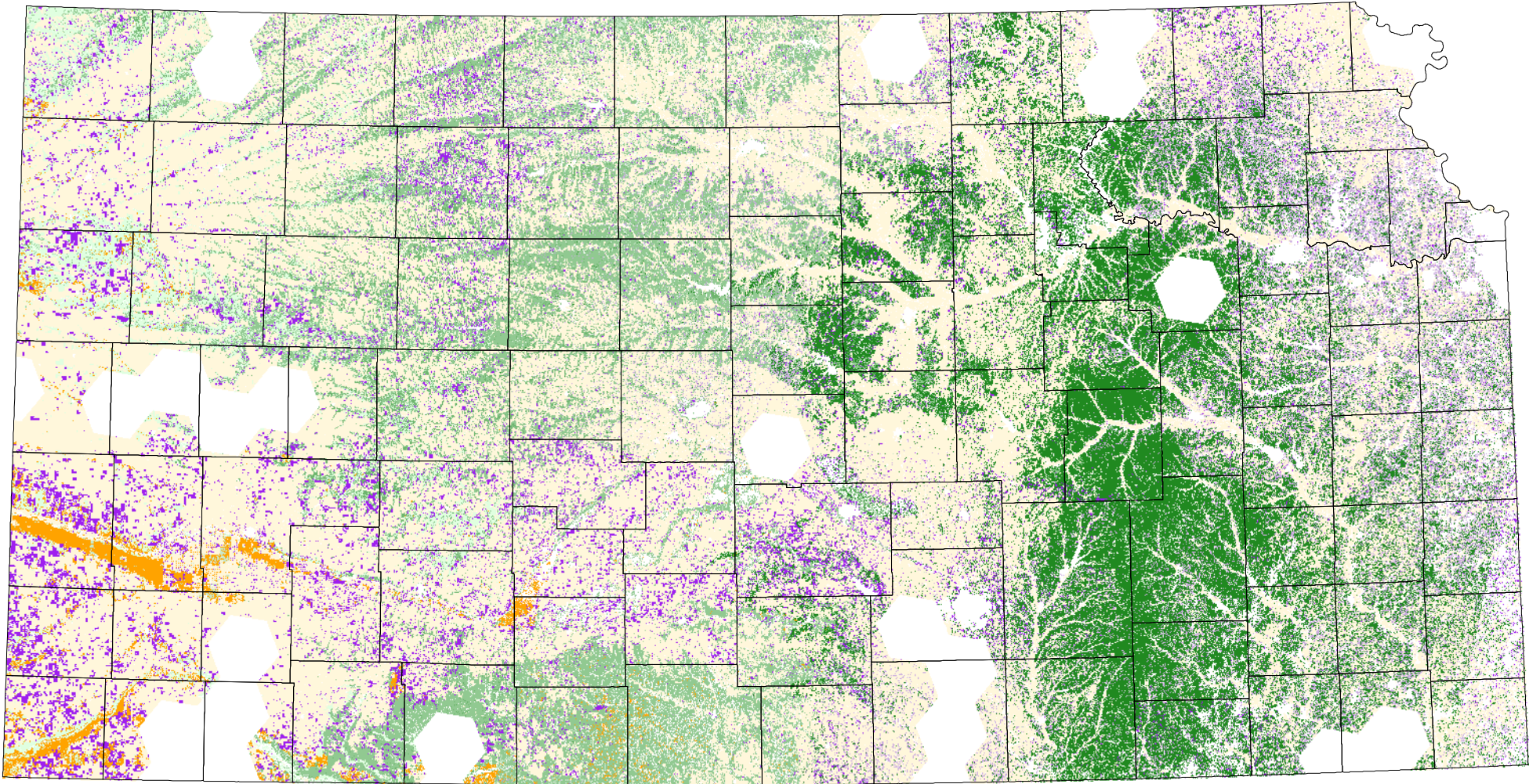
[#KS GAP]

selected open habitats from prey (black-tailed prairie dog, thirteen-lined ground squirrel, and prairie vole) habitats.

Reference List


1. Andersen, K. W. and E. D. Fleharty. 1967. Mammalian distribution within biotic communities of northeastern Jewell County, Kansas. Fort Hays Studies Science Series 6:1-45.
2. Choate, J. R. and E. D. Fleharty. 1975. Synopsis of native, recent mammals of Ellis County, Kansas. Occasional Papers, The Museum, Texas Tech University 37:1-80.
3. Errington, P. L. 1937. Summer food habits of the badger in northwestern Iowa. *Journal of Mammalogy* 18:213-216.
4. Finck, E. J., D. W. Kaufman, G. A. Kaufman, S. K. Gurtz, B. K. Clark, L. J. McLellan, and B. S. Clark. 1986. Mammals of the Konza Prairie Research Natural Area, Kansas. *The Prairie Naturalist* 18:153-166.
5. Halloran, A. F. and B. P. Glass. 1959. The carnivores and ungulates of the Wichita Mountains Wildlife Refuge, Oklahoma. *Journal of Mammalogy* 40:360-370.
6. Pefaur, J. E. and R. S. Hoffmann. 1975. Studies of small mammal populations at three sites on the northern Great Plains. Occasional Papers of the Museum of Natural History, The University of Kansas 37:1-27.
7. Ports, M. A. and L. K. Ports. 1989. Associations of small mammals occurring in a pluvial lake basin, Ruby Lake, Nevada. *The Great Basin Naturalist* 49:123-130.
8. Powell, K. L. 1992. Prairie dog distribution, habitat characteristics, and population monitoring in Kansas: implications for black-footed ferret recovery. M.S. Thesis. Kansas State University. Manhattan, Kansas.
9. Smith, R. E. 1967. Natural history of the prairie dog in Kansas. Miscellaneous Publications, Museum of Natural History, University of Kansas 49:1-39.
10. Snead, E. and G. O. Hendrickson. 1942. Food habits of the badger in Iowa. *Journal of Mammalogy* 23:380-391.
11. Stains, H. J. and R. H. Baker. 1958. Furbearers in Kansas. Miscellaneous Publications, Museum of Natural History, University of Kansas 18:1-100.
12. Tileston, J. V. and R. R. Lechleitner. 1966. Some comparisons of the black-tailed and white-tailed prairie dogs in north-central Colorado. *The American Midland Naturalist* 75:292-316.

American Badger




 Sand Sage Shrubland

 Tallgrass Prairie

 Western Wheatgrass Prairie

 Mixed Prairie

 Shortgrass Prairie

 Non-native Grassland

 CRP

 Cultivated Land

 Mixed Prairie-Disturbed Land

 Weedy Upland