

Habitat Model for Species: Yellow Warbler

Alpha Code: YWAR Status: Breeding

[Distribution Map](#)

[Habitat Map](#)

Landcover Category

0 - Comments

[KS GAP] 30 m edge of selected forests and woodlands (1-11,50,51); 30 m edge of weedy upland (71) adjacent to selected forests and woodlands

Collins et al., 1982
Gabrielson, 1914

Stewart, 1975
Lowther et al., 1999

Habitat Restrictions

Comments

generally occupy open, deciduous shrubby areas. Nesting in orchards (shelterbelt) and bushes around rural house.
shelterbelts, farmsteads
Breeds in disturbed and early successional habitats.

01 - Maple-Basswood Forest

[KS GAP] 30 m edge.
Stauffer and Best, 1980

02 - Oak-Hickory Forest

[KS GAP] 30 m edge.
Stauffer and Best, 1980

03 - Post Oak-Blackjack Oak

Forest

[KS GAP] 30 m edge.
Stauffer and Best, 1980

04 - Pecan Floodplain Forest

[KS GAP] 30 m edge.
Baicich and Harrison, 1997
Goosen, 1977
Stauffer and Best, 1980
Kendeigh, 1941 edge
Stewart, 1975
Schroeder, 1982

Found on forest edge of prairie.

05 - Ash-Elm-Hackberry

Floodplain Forest

[KS GAP] 30 m edge.
Baicich and Harrison, 1997
Faanes, 1987 edge next to grassland
Stauffer and Best, 1980
Faanes, 1984 edge next to grassland
Kendeigh, 1941 edge
Stewart, 1975
Schroeder, 1982
Faanes, 1983
Lywood, 1981
Zimmerman and Tatschl, 1975

Found on forest edge of prairie.

06 - Cottonwood Floodplain

Forest

[KS GAP] 30 m edge.
Baicich and Harrison, 1997
Goosen, 1977
Knopf and Sedgwick, 1992
Briskie, 1995
Stauffer and Best, 1980
Martinsen and Whitham, 1994
Kendeigh, 1941 edge
Dinsmore et al., 1984
Stewart, 1975
Schroeder, 1982
Kammeraad, 1964
Lowther et al., 1999

Found on forest edge of prairie.

07 - Mixed Oak Floodplain

[KS GAP] 30 m edge.
Baicich and Harrison, 1997
Goosen, 1977
Stauffer and Best, 1980
Kendeigh, 1941 edge Found on forest edge of prairie.
Stewart, 1975
Schroeder, 1982

08 - Bur Oak Floodplain

Woodland

[KS GAP] 30 m edge.
Baicich and Harrison, 1997
Knopf and Sedgwick, 1992
Stauffer and Best, 1980
Kendeigh, 1941 edge Found on forest edge of prairie.
Stewart, 1975
Schroeder, 1982
Reed, 1980
Lowther et al., 1999

09 - Mixed Oak Ravine

[KS GAP] 30 m edge.
Baicich and Harrison, 1997
Stauffer and Best, 1980
Kendeigh, 1941 Found on forest edge of prairie.

11 - Cottonwood Floodplain

Woodland

[KS GAP] 30 m edge.
Baicich and Harrison, 1997
Goosen, 1977
Knopf and Sedgwick, 1992
Briskie, 1995
Stauffer and Best, 1980
Martinsen and Whitham, 1994
Kendeigh, 1941 edge Found on forest edge of prairie.
Dinsmore et al., 1984
Stewart, 1975
Schroeder, 1982
Kammeraad, 1964
Reed, 1980
Lowther et al., 1999

14 - Willow Shrubland

Baicich and Harrison, 1997
Collins et al., 1982
Knopf and Sedgwick, 1992
Briskie, 1995
Stauffer and Best, 1980
Martinsen and Whitham, 1994
Kendeigh, 1941 edge Found on forest edge of prairie.
Baicich and Harrison, 1997
Dinsmore et al., 1984
Stewart, 1975
Brooks, 1971
Schroeder, 1982
Kammeraad, 1964
Reed, 1980
Lowther et al., 1999

15 - Buttonbush (Swamp)

Shrubland

Collins et al., 1982
Knopf and Sedgwick, 1992
Briskie, 1995
Baicich and Harrison, 1997
Dinsmore et al., 1984
Stewart, 1975
Schroeder, 1982
Reed, 1980
Lowther et al., 1999

36 - Cottonwood Savanna - not mapped

Stauffer and Best, 1980
Schroeder, 1982

42 - Salt Cedar or Tamarisk Shrubland

Brown and Trosset, 1989
Reed, 1980
Lywood, 1981

50 - Deciduous Forest-Mined Land

[KS GAP] 30 m edge.
Stauffer and Best, 1980
Kendeigh, 1941
Kammeraad, 1964
Reed, 1980
Lywood, 1981
Lowther et al., 1999

Found on forest edge of prairie.

51 - Maple Floodplain Forest

[KS GAP] 30 m edge.
Baicich and Harrison, 1997
Stauffer and Best, 1980

71 - Weedy Upland

[KS GAP] 30 m edge of adjacent to selected forests and woodlands
Briskie, 1995

Found on forest edge of old field.

81 - Urban Areas

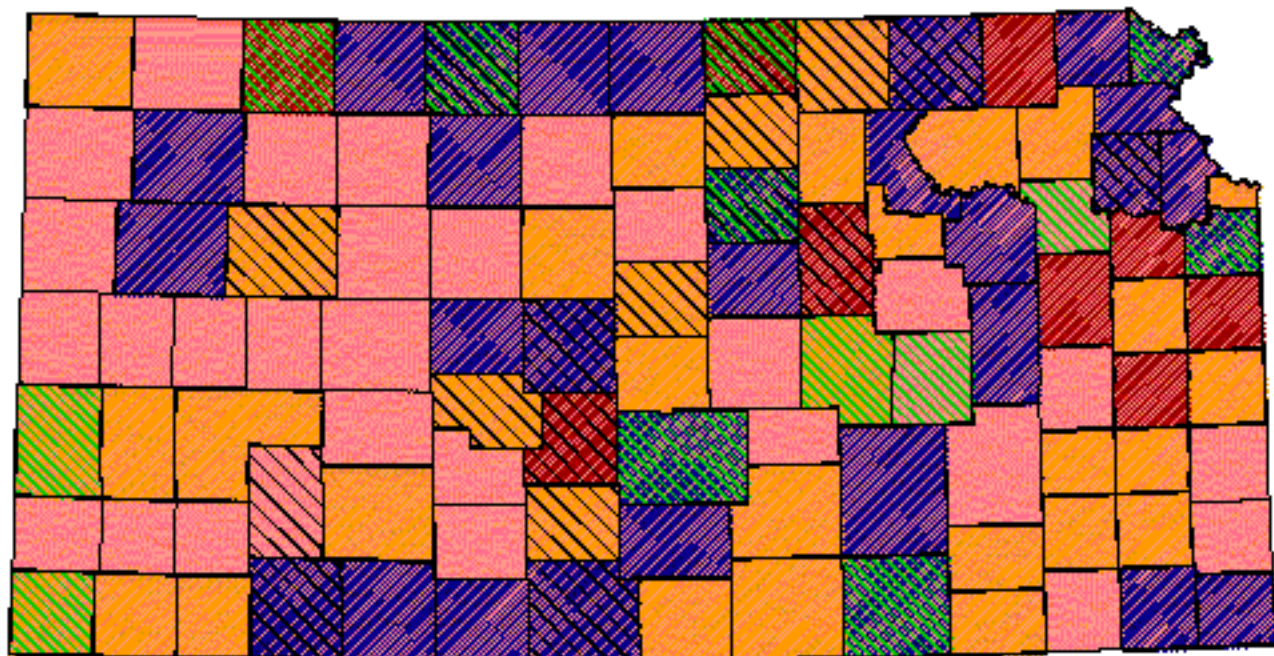
Baicich and Harrison, 1997
Gullion, 1988

gardens, shrubbery, berry patches
Found in Mock-orange tree near house.

Reference List

1. Baicich, P. J. and C. J. Harrison. 1997. A guide to the nests, eggs, and nestling of North American birds. Second edition. Academic Press, San Diego, California, USA.
2. Briskie, J. V. 1995. Nesting biology of the Yellow Warbler at the northern limit of its range. *Journal of Field Ornithology* 66(4):531-543.
3. Brooks, W. S. 1971. Songbird communities-comparison of sedge-forb meadow & willow shrub areas. *Passenger Pigeon* 33(1):39-45.
4. Brown, B. T. and M. W. Trosset. 1989. Nesting-habitat relationships of riparian birds along the Colorado River in Grand Canyon, Arizona. *Southwestern Naturalist* 34(2):260-270.
5. Collins, S. L., F. C. James, and P. G. Risser. 1982. Habitat relationships of wood warblers (Parulidae) in northern central Minnesota. *Oikos* 39(1):50-58.
6. Dinsmore, J. J., K. H. Thomas, D. Koenig, C. P. Petersen, and M. D. Roosa. 1984. *Iowa Birds*. Iowa State University Press, Ames, Iowa, USA.
7. Faanes, C. A. 1983. Breeding birds of wooded draws in western North Dakota. *Prairie Naturalist* 15(4):173-187.
8. _____. 1984. Wooded islands in a sea of prairie. *American Birds* 38(1):3-6.
9. _____. 1987. Breeding birds and vegetation structure in western North Dakota wooded draws. *Prairie Naturalist* 19(4):209-220.
10. Gabrielson, I. N. 1914. Breeding birds of a Clay County, Iowa farm. *Wilson Bulletin* 26(2):69-81.
11. Goosen, J. P. 1977. Yellow Warbler nest used by a Least Flycatcher. *Wilson Bulletin* 89(1):153-154.
12. Gullion, G. W. 1988. Nest material caching by Yellow Warblers. *Loon* 60(1):54.
13. Kammeraad, J. W. 1964. Nesting habits and survival of Yellow Warblers. *Jack-Pine Warbler* 42(2):243-248.
14. Kendeigh, S. C. 1941. Birds of a prairie community. *Condor* 43(4):165-174.
15. Knopf, F. L. and J. A. Sedgwick. 1992. An experimental stud of nest-site selection by Yellow Warblers. *Condor* 94:734-742.
16. Lowther, P. E., C. Celada, N. Klein, C. C. Rimmer, and D. A. Spector. 1999. Yellow Warbler. A. Poole and F. Gill, editors. *The Birds of North America*. no. 454. The Birds of North America, Inc., Philadelphia, Pennsylvania, USA.
17. Lywood, C. 1981. Yellow Warblers: nest biology and philopatry. *Ontario Bird Banding* 14(1):23-29.
18. Martinsen, G. D. and T. G. Whitham. 1994. More birds nest in hybrid cottonwood trees. *Wilson Bulletin* 106(3):474-481.
19. Reed, M. L. 1980. Yellow Warbler nesting in junipers. *Jack-Pine Warbler* 58(4):150.
20. Schroeder, R. L. 1982. Habitat suitability index models: Yellow Warbler. *Biological Report* 82(10.27). U. S. Department of the Interior, Fish and Wildlife Service, Washington, D.C., USA.
21. Stauffer, D. F. and L. B. Best. 1980. Habitat selection by birds of riparian communities: evaluating effects of habitat alterations. *Journal of Wildlife Management* 44(1):1-15.
22. Stewart, R. E. 1975. *Breeding birds of North Dakota*. Harrison Smith, Lund Press, Minneapolis, Minnesota, USA.
23. Zimmerman, J. L. and J. L. Tatschl. 1975. Floodplain birds of Weston Bend, Missouri River. *Wilson Bulletin* 87(2):196-208.

Yellow Warbler




Kansas Breeding Bird Atlas

 Confirmed Breeding

 Probable Breeding

 Possible Breeding

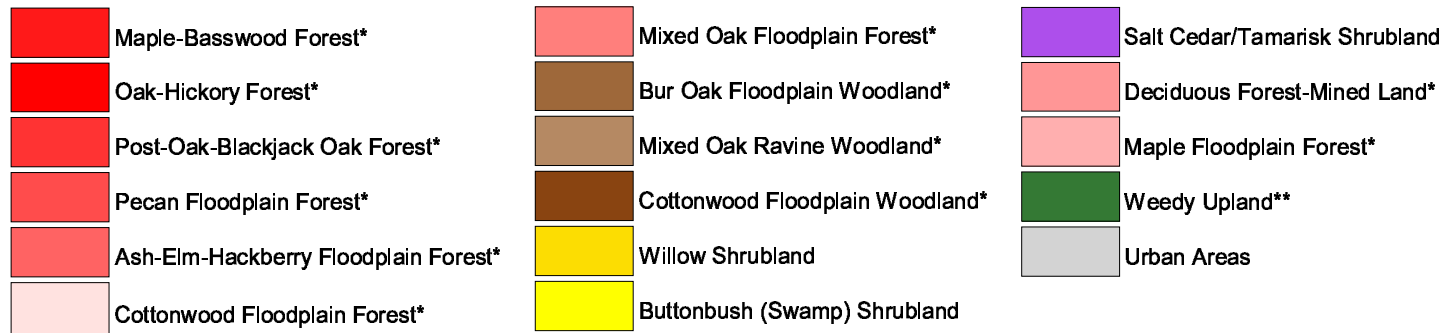
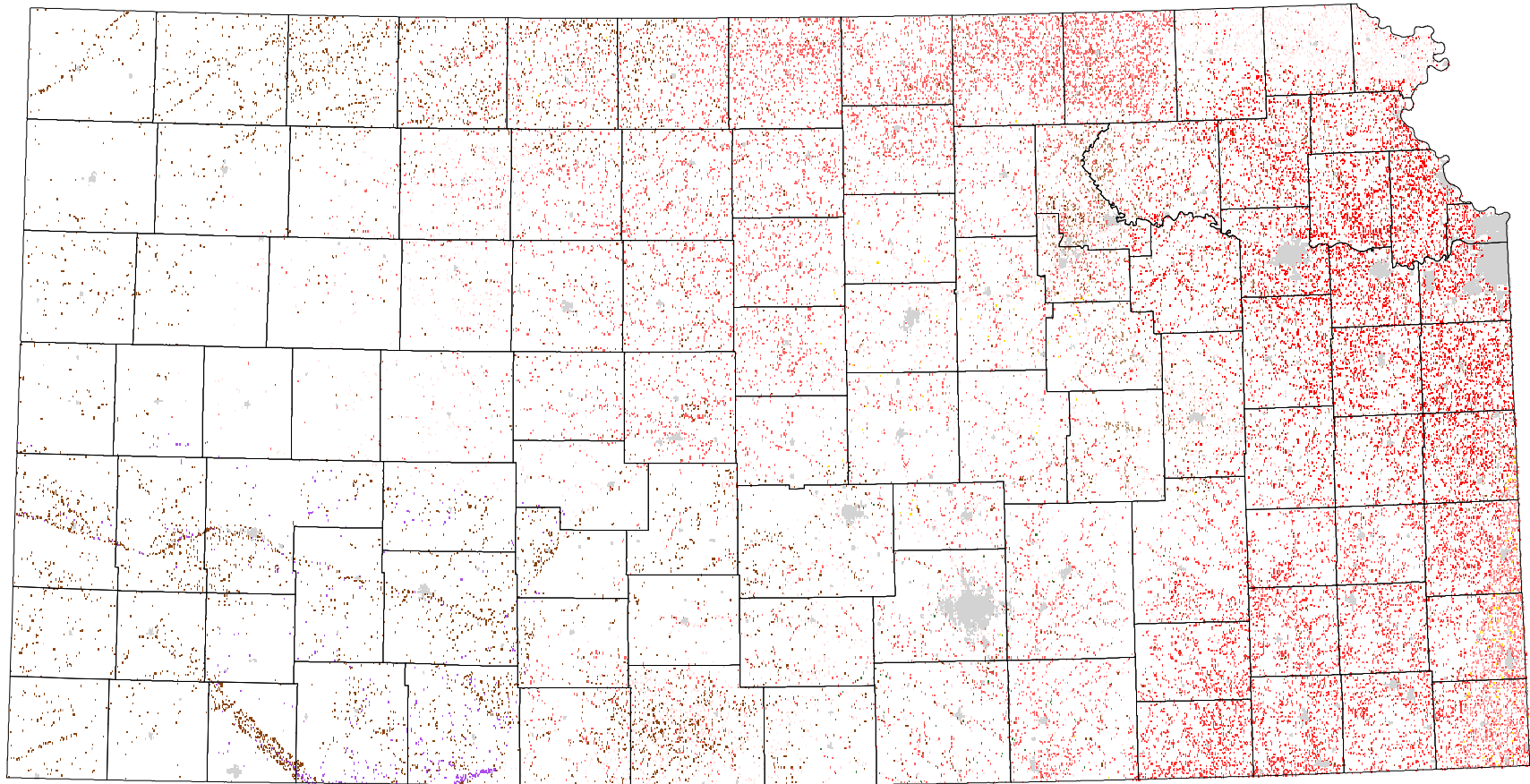
 Breeding Bird Survey

 Birds of Kansas,
Horned Lark

 Range from Johnsgard, 1988
The Birds of Nebraska

All shaded counties will be included in the distribution of the species.

Yellow Warbler



* 30 m edge

** 30 m edge next to forests or woodlands