

Habitat Model for Species: Song Sparrow

Alpha Code: SOSP Status: Resident

[Distribution Map](#)

[Habitat Map](#)

Landcover Category

0 - Comments

[KS GAP]
Yahner, 1982
Robel and Browning, 1981

Habitat Restrictions

30 m edge of selected forests and woodlands.

Comments

2 nests per year in 7 shelterbelts searched.
Found on a 0.8 ha wildlife plot containing Rosa multiflora, Elaeagnus umbellata and Prunus tomentosa. Listed under shelterbelts, but not

01 - Maple-Basswood Forest

[KS GAP] Map 30 m edge next to non-wooded habitats (shrubby edge).
Stauffer and Best, 1980

02 - Oak-Hickory Forest

[KS GAP] Map 30 m edge next to non-wooded habitats (shrubby edge).
Stauffer and Best, 1980
Gates and Gysel, 1978 edge

05 - Ash-Elm-Hackberry

Floodplain Forest

[KS GAP] Map 30 m edge next to non-wooded habitats (shrubby edge).
Stauffer and Best, 1980

06 - Cottonwood Floodplain

Forest

[KS GAP] Map 30 m edge next to non-wooded habitats (shrubby edge).
Bent, 1968
Brooks, 1971
Zimmerman and Tatschl, 1975 winter
Anderson, 1966
Anderson, 1982

11 - Cottonwood Floodplain

Woodland

[KS GAP] Map 30 m edge next to non-wooded habitats (shrubby edge).
Bent, 1968
Brooks, 1971
Anderson, 1966
Anderson, 1982

14 - Willow Shrubland

Bent, 1968
Brooks, 1971
Anderson, 1966
Anderson, 1982

17 - Tallgrass Prairie

[KS GAP] Map 30 m edge next to selected woody habitats (shrubby edge).
Herkert, 1994 with shrubs
Finck, 1984 winter

30 - Low or Wet Prairie

Bent, 1968
Brooks, 1971

31 - Freshwater Marsh

Bent, 1968

33 - Cattail Marsh

Bent, 1968

40 - Non-native Grassland

[KS GAP] Map 30 m edge next to selected woody habitats (shrubby edge).
Stauffer and Best, 1980
Camp and Best, 1994
Bryan and Best, 1991
Basore et al., 1986
Gates and Gysel, 1978 edge
O'leary and Nyberg, 2000

roadsides next to row crops

in strip cover.

41 - CRP

[KS GAP] Map 30 m edge next to selected woody habitats (shrubby edge).
Patterson and Best, 1996
Johnson and Schwartz, 1993

51 - Maple Floodplain Forest

[KS GAP] Map 30 m edge next to selected woody habitats (shrubby edge).
Stauffer and Best, 1980

70 - Weedy Marsh

Bent, 1968
Brooks, 1971

71 - Weedy Upland

Beck and Watts, 1997
Zimmerman and Tatschl, 1975 winter

81 - Urban Areas

DeGraaf and Stihler, 1979 with a large volume of deciduous shrubs.

91 - Ozark Sandstone Glade /

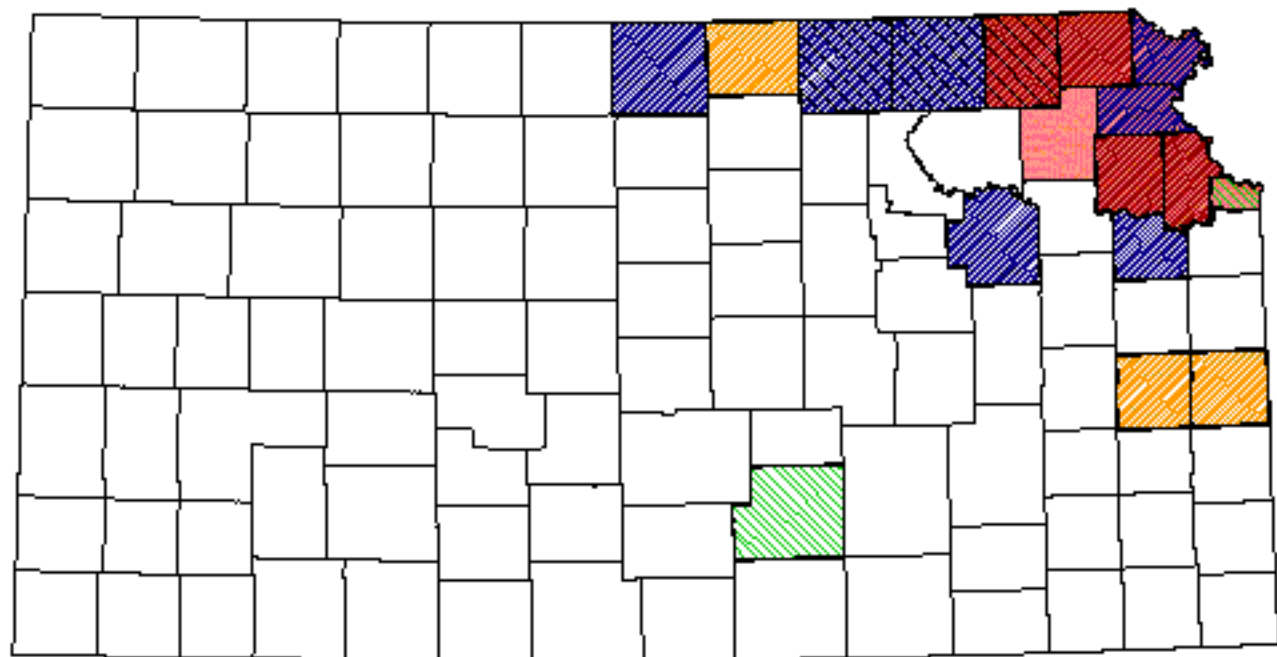
Prairie - not mapped

Stauffer and Best, 1980


Reference List


1. Anderson, T. R. 1966. Notes on the breeding of the Song Sparrow in Kansas. *Kansas Ornithological Society Bulletin* 17(2):11-12.
2. _____. 1982. Song Sparrow nesting in Kansas. *Kansas Ornithological Society Bulletin* 33(2):23-24.
3. Basore, N. S., L. B. Best, and J. B. Wooley, Jr. 1986. Bird nesting in Iowa no-tillage and tilled cropland. *Journal of Wildlife Management* 50(1):19-28.
4. Beck, C. W. and B. D. Watts. 1997. The effect of cover and food on space use by wintering Song Sparrows and Field Sparrows. *Canadian Journal of Zoology* 75:1636-1641.
5. Bent, A. C. 1968. Life histories of North American cardinals, grosbeaks, buntings, towhees, finches, sparrows, and allies. L. A. Oliver, Jr., editor. *United States National Museum Bulletin*. No. 237.
6. Brooks, W. S. 1971. Songbird communities-comparison of sedge-forb meadow & willow shrub areas. *Passenger Pigeon* 33(1):39-45.
7. Bryan, G. G. and L. B. Best. 1991. Bird abundance and species richness in grassed waterways in Iowa rowcrop fields. *American Midland Naturalist* 126:90-102.
8. Camp, M. and L. B. Best. 1994. Nest density and nesting success of birds in roadsides adjacent to rowcrop fields. *American Midland Naturalist* 131(2):347-358.
9. DeGraaf, R. M. and C. W. Stihler. 1979. Nesting habitats of five common suburban bird species. *Transactions of the Northeast Section of the Wildlife Society* 36:52-59.
10. Finck, E. J. 1984. Birds wintering on the Konza Prairie Research Natural Area. Pages 91-94 in G. K. Clambey and R. H. Pemble, editors. *The prairie: Past, present and future*. Proceedings of the Ninth North American Prairie Conference.
11. Gates, J. E. and L. W. Gysel. 1978. Avian nest dispersion and fledging success in field-forest ecotones. *Ecology* 59(5):871-883.
12. Herkert, J. R. 1994. The effects of habitat fragmentation on Midwestern grassland bird communities. *Ecological Applications* 4(3):461-471.
13. Johnson, D. H. and M. D. Schwartz. 1993. The Conservation Reserve Program: habitat for grassland birds. *Great Plains Research* 3(August):273-295.
14. O'leary, C. H. and D. W. Nyberg. 2000. Treelines between fields reduce the density of grassland birds. *Natural Areas Journal* 20(3):243-249.
15. Patterson, M. P. and L. B. Best. 1996. Bird abundance and nesting success in Iowa CRP fields: The importance of vegetation structure and composition. *American Midland Naturalist* 135:135-167.
16. Robel, R. J. and N. G. Browning. 1981. Comparative use of woody plantings by nongame birds in Kansas. *Wildlife Society Bulletin* 9(2):142-148.
17. Stauffer, D. F. and L. B. Best. 1980. Habitat selection by birds of riparian communities: evaluating effects of habitat alterations. *Journal of Wildlife Management* 44(1):1-15.
18. Yahner, R. H. 1982. Avian nest densities and nest-site selection in farmstead shelterbelts. *Wilson Bulletin* 94(2):156-175.
19. Zimmerman, J. L. and J. L. Tatschl. 1975. Floodplain birds of Weston Bend, Missouri River. *Wilson Bulletin* 87(2):196-208.


Song Sparrow





Kansas Breeding Bird Atlas


 Confirmed Breeding

 Probable Breeding

 Possible Breeding

 Breeding Bird Survey

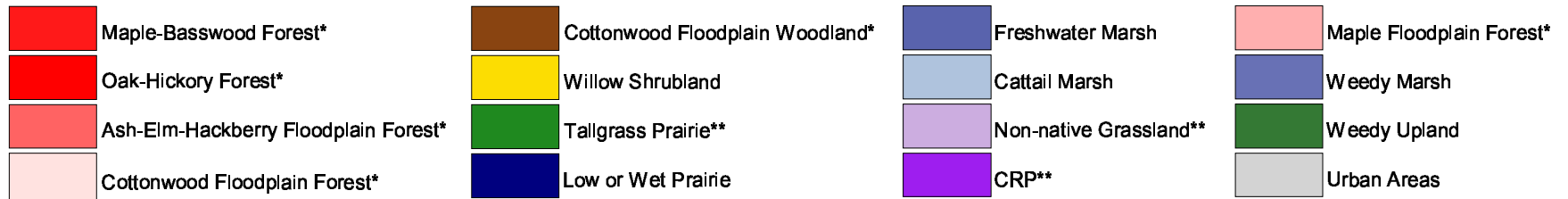
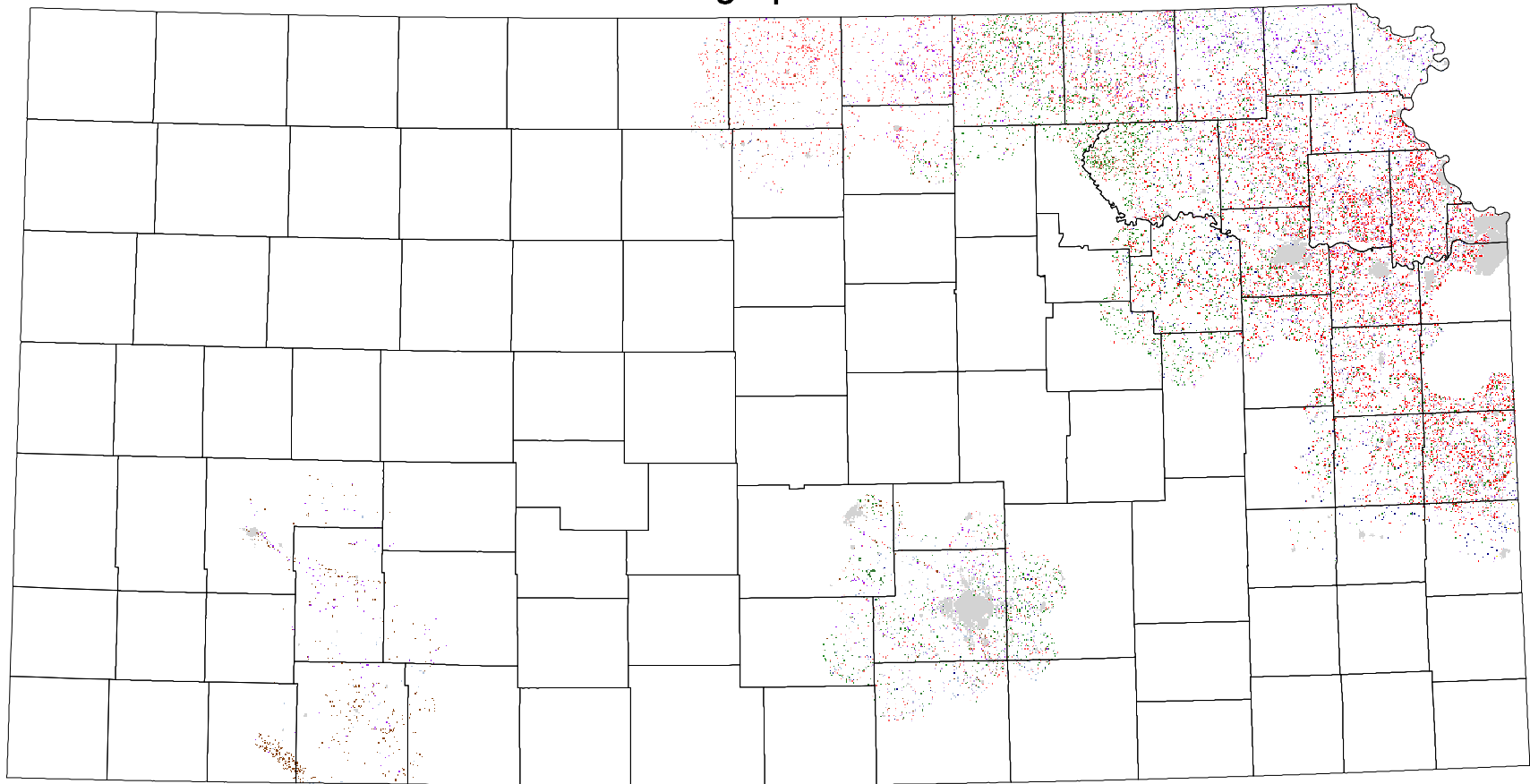
 *Birds of Kansas,*
Horned Lark

 Range from Johnsgard, 1998
The Birds of Nebraska

Habitat

All shaded counties will be included in the possible distribution of the species.

Song Sparrow



* 30 m edge

** 30 m edge next to mapped forests or woodlands