

Habitat Model for Species: Red-winged Blackbird

Alpha Code: RWBL Status: Resident

[Distribution Map](#)

[Habitat Map](#)

Landcover Category

0 - Comments

[KS GAP] Map 30 m edge of selected forest/woodland (4-9, 11, 51, and 55).

Cable et al., 1992
Zimmerman, 1993
Short, 1985

Dolbeer, 1976

Clark and Weatherhead, 1987

Krapu, 1978
Case and Hewitt, 1963
Shipley, 1980

Joyner, 1978

Stewart, 1975
Miller, 1968

Habitat Restrictions

Comments

found in >85% of the windbreaks
stream drainages where cattails occur
literature review HSI: optimum habitats are
hemimarsch, semipermanent wetlands with cattails.
Upland habitats with dense, tall, herbaceous
vegetation also provide nesting at lower levels.
nested in old field habitat that was mowed annually
in late summer
tame and native (no species given) hayfields and
wetlands were preferred.
two row hackberry planting
brushy old fields
brushy old field (osage orange, redcedar, red mulberry
saplings)
nested exclusively in stands of reed canarygrass
within an old field

nested in buckbrush and chokecherry

04 - Pecan Floodplain Forest

[KS GAP] 30 m edge.
Yasukawa and Searcy, 1995 edge next to water

uncommon nesting

05 - Ash-Elm-Hackberry Floodplain Forest

[KS GAP] 30 m edge.
Stauffer and Best, 1980
Faanes, 1987
Yasukawa and Searcy, 1995 edge next to water

uncommon nesting

06 - Cottonwood Floodplain Forest

[KS GAP] 30 m edge.
Miller, 1968
Yasukawa and Searcy, 1995 edge next to water

uncommon nesting

07 - Mixed Oak Floodplain

[KS GAP] 30 m edge.
Yasukawa and Searcy, 1995 edge next to water

uncommon nesting

08 - Bur Oak Floodplain Woodland

[KS GAP] 30 m edge.
Zimmerman, 1993

Yasukawa and Searcy, 1995 edge next to water

nests in woody vegetation associated with stream
drainages
uncommon nesting

09 - Mixed Oak Ravine

[KS GAP] 30 m edge.
Zimmerman, 1993

nests in woody vegetation associated with stream
drainages

11 - Cottonwood Floodplain Woodland

[KS GAP] 30 m edge.
Wiens, 1963
Miller, 1968
Yasukawa and Searcy, 1995 edge next to water

uncommon nesting

14 - Willow Shrubland

Stewart, 1975
Miller, 1968

17 - Tallgrass Prairie

Kahl et al., 1985
Shipley, 1980

Cink and Lowther, 1989

22 - Mixed Prairie

Renken and Dinsmore, 1987

28 - Spikerush Playa Lake

Stewart, 1975

29 - Playa Lake

Fischer and Bolen, 1981

30 - Low or Wet Prairie

Cink and Lowther, 1989
Stewart, 1975
Yasukawa and Searcy, 1995

31 - Freshwater Marsh

Zimmerman, 1993
Clark and Weatherhead, 1987
Krapu, 1978
Case and Hewitt, 1963
Albers, 1978
Shipley, 1980
Stewart, 1975
Orians and Willson, 1964
Miller, 1968
Holm, 1973
Yasukawa and Searcy, 1995

32 - Bulrush Marsh

Clark and Weatherhead, 1987
Krapu, 1978
Case and Hewitt, 1963
Albers, 1978
Shipley, 1980
Platt, 1975
Stewart, 1975
Orians and Willson, 1964
Holm, 1973
Yasukawa and Searcy, 1995

33 - Cattail Marsh

Zimmerman, 1993
Clark and Weatherhead, 1987
Krapu, 1978
Case and Hewitt, 1963
Albers, 1978
Shipley, 1980
Stewart, 1975
Orians and Willson, 1964
Miller, 1968
Holm, 1973
Yasukawa and Searcy, 1995

35 - Acid seep - not mapped

Zimmerman, 1993
Stewart, 1975

35 - Neutral seep - not mapped

Zimmerman, 1993
Stewart, 1975

38 - Forb Playa Lake

Fischer and Bolen, 1981

brushy
along intermittent stream, nesting in buckbrush or
willow saplings
denser populations on successional plot with
dogwood present.

territorial males in idle and grazed mixed-grass prairie
and in alfalfa-wheatgrass plantings.

marshy vegetation around ponds and seeps

marshy vegetation around ponds and seeps

marshy vegetation around ponds and seeps

marshy vegetation around ponds and seeps

40 - Non-native Grassland

Stauffer and Best, 1980
Zimmerman and Tatschl, 1975
Krapu, 1978
Camp and Best, 1994
Albers, 1978
Bryan and Best, 1994
Stewart, 1975
Blakley, 1976

brome-alfalfa
roadsides adjacent to row crops.

waterways within corn or soybean fields

41 - CRP

Klute and Robel, 1997
Patterson and Best, 1996

no nesting
non-native mixes

44 - Cultivated Land

Zimmerman and Tatschl, 1975
Frawley and Best, 1991
Yasukawa and Searcy, 1995

alfalfa fields. Did not recolonize after mowing.

51 - Maple Floodplain Forest

[KS GAP] 30 m edge.
Stauffer and Best, 1980
Yasukawa and Searcy, 1995 edge next to water

uncommon nesting

55 - Deciduous Woodland

[KS GAP] 30 m edge.
Cable et al., 1992

70 - Weedy Marsh

Zimmerman, 1993
Clark and Weatherhead, 1987
Krapu, 1978
Case and Hewitt, 1963
Albers, 1978
Shiple, 1980
Stewart, 1975
Orians and Willson, 1964
Miller, 1968
Holm, 1973
Yasukawa and Searcy, 1995

marshy vegetation around ponds and seeps

71 - Weedy Upland

Zimmerman and Tatschl, 1975
Clark and Weatherhead, 1987
Yasukawa and Searcy, 1995

91 - Ozark Sandstone Glade / Prairie - not mapped

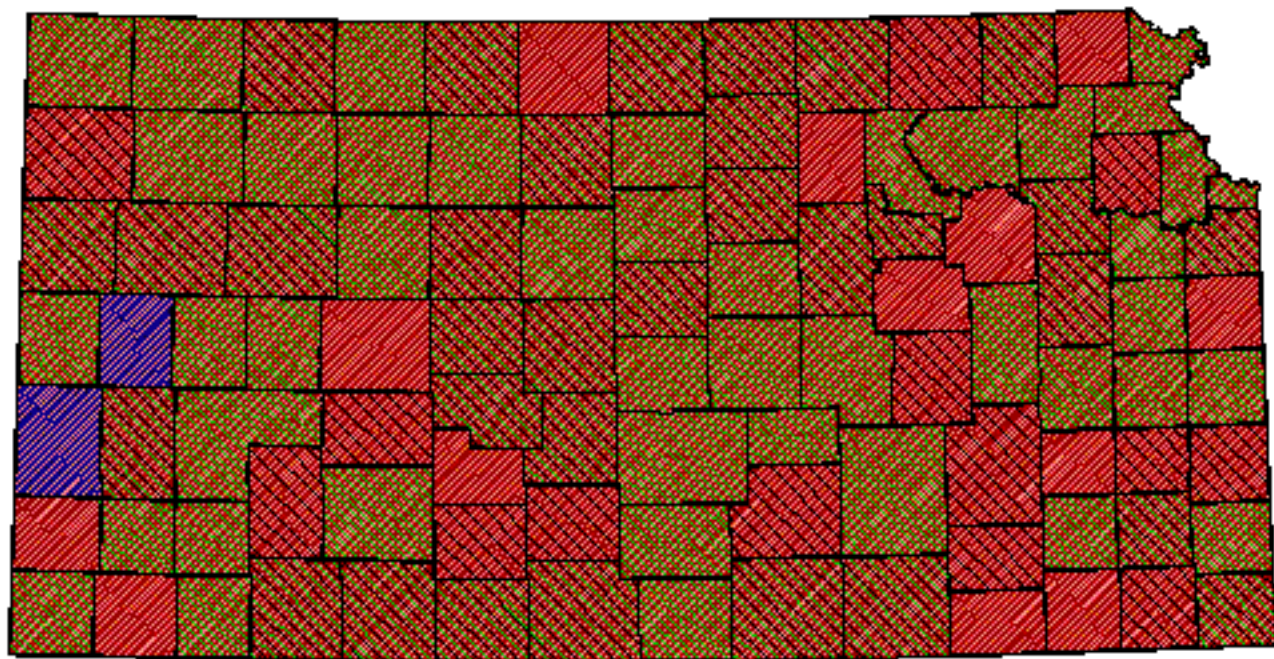
Stauffer and Best, 1980

Reference List

1. Albers, P. H. 1978. Habitat selection by breeding Red-winged Blackbirds. *Wilson Bulletin* 90(4):619-634.
2. Blakley, N. R. 1976. Successive polygyny in upland nesting Redwinged Blackbirds. *Condor* 78(1):129-133.
3. Bryan, G. G. and L. B. Best. 1994. Avian nest density and success in grassed waterways in Iowa rowcrop fields. *Wildlife Society Bulletin* 22:583-592.
4. Cable, T. T., R. L. Schroeder, V. Brack, Jr., and P. S. Cook. 1992. Summer bird use of Kansas windbreaks. *Prairie Naturalist* 24(3):175-184.
5. Camp, M. and L. B. Best. 1994. Nest density and nesting success of birds in roadsides adjacent to rowcrop fields. *American Midland Naturalist* 131(2):347-358.
6. Case, N. A. and O. H. Hewitt. 1963. Nesting and productivity of the Red-winged Blackbird in relation to habitat. *The Living Bird* 2:7-20.
7. Cink, C. L. and P. E. Lowther. 1989. Breeding bird populations of a floodplain tallgrass prairie in Kansas. Pages 259-262 *in* T. B. Bragg and J. Stubbendieck, editors. *Prairie Pioneers: Ecology, History and Culture*. Proceedings of the Eleventh North American Prairie Conference.
8. Clark, R. G. and P. J. Weatherhead. 1987. Influence of population size on habitat use by territorial male Red-winged Blackbirds in agricultural landscapes. *Auk* 104:311-315.
9. Dolbeer, R. A. 1976. Reproductive rate and temporal spacing of nesting of Red-winged Blackbirds in upland habitat. *Auk* 93:343-355.
10. Faanes, C. A. 1987. Breeding birds and vegetation structure in western North Dakota wooded draws. *Prairie Naturalist* 19(4):209-220.

11. Fischer, D. H. and E. G. Bolen. 1981. Nestling diets of Red-winged and Yellow-headed Blackbirds on playa lakes of west Texas. *Prairie Naturalist* 13(3/4):81-83.
12. Frawley, B. J. and L. B. Best. 1991. Effects of mowing on breeding bird abundance and species composition in alfalfa fields. *Wildlife Society Bulletin* 19:135-142.
13. Holm, C. H. 1973. Breeding sex ratios, territoriality, and reproductive success in the Red-winged Blackbird (*Agelaius phoeniceus*). *Ecology* 54(2):356-365.
14. Joyner, D. E. 1978. Use of an old-field habitat by Bobolinks and Red-winged Blackbirds. *Canadian Field-Naturalist* 92(4):383-386.
15. Kahl, R. B., T. S. Baskett, J. A. Ellis, and J. N. Burroughs. 1985. Characteristics of summer habitats of selected nongame birds in Missouri. University of Missouri Agriculture Experiment Station Research Bulletin 1056. University of Missouri, Columbia, Missouri, USA.
16. Klute, D. S. and R. J. Robel. 1997. Will conversion of Conservation Reserve Program (CRP) lands to pasture be detrimental for grassland birds in Kansas? *American Midland Naturalist* 137:206-212.
17. Krapu, G. L. 1978. Productivity of Red-winged Blackbirds in prairie pothole habitat. *Iowa Bird Life* 48:24-30.
18. Miller, R. S. 1968. Conditions of competition between Redwings and Yellowheaded Blackbirds. *Journal of Animal Ecology* 37:43-61.
19. Orians, G. H. and M. F. Willson. 1964. Interspecific territories of birds. *Ecology* 45(4):736-745.
20. Patterson, M. P. and L. B. Best. 1996. Bird abundance and nesting success in Iowa CRP fields: The importance of vegetation structure and composition. *American Midland Naturalist* 135:135-167.
21. Platt, D. R. 1975. Breeding birds of Sand Prairie Natural History Reservation, Harvey County, Kansas. *American Birds* 29(6):1146-1151.
22. Renken, R. B. and J. J. Dinsmore. 1987. Nongame bird communities on managed grasslands in North Dakota. *Canadian Field-Naturalist* 101(4):551-557.
23. Shipley, F. S. 1980. Habitat distribution and fecundity in a marsh-upland bird species series. Kansas State University, Manhattan, Kansas, USA.
24. Short, H. L. 1985. Habitat suitability index model: Red-winged Blackbird. Biological Report 82(10.95). U. S. Department of the Interior, Fish and Wildlife Service, Washington, D.C., USA.
25. Stauffer, D. F. and L. B. Best. 1980. Habitat selection by birds of riparian communities: evaluating effects of habitat alterations. *Journal of Wildlife Management* 44(1):1-15.
26. Stewart, R. E. 1975. Breeding birds of North Dakota. Harrison Smith, Lund Press, Minneapolis, Minnesota, USA.
27. Wiens, J. A. 1963. Aspects of cowbird parasitism in southern Oklahoma. *Wilson Bulletin* 75(2):130-139.
28. Yasukawa, K. and W. A. Searcy. 1995. Red-winged Blackbird. A. Poole and F. Gill, editors. *The Birds of North America*. No. 184. The American Ornithologists' Union and The Academy of Natural Sciences, Philadelphia, Pennsylvania, USA.
29. Zimmerman, J. L. 1993. *The Birds of Konza*. University Press of Kansas, Lawrence, Kansas, USA.
30. Zimmerman, J. L. and J. L. Tatschl. 1975. Floodplain birds of Weston Bend, Missouri River. *Wilson Bulletin* 87(2):196-208.

Red-winged Blackbird



Kansas Breeding Bird Atlas

Confirmed Breeding

Probable Breeding

Possible Breeding

Breeding Bird Survey

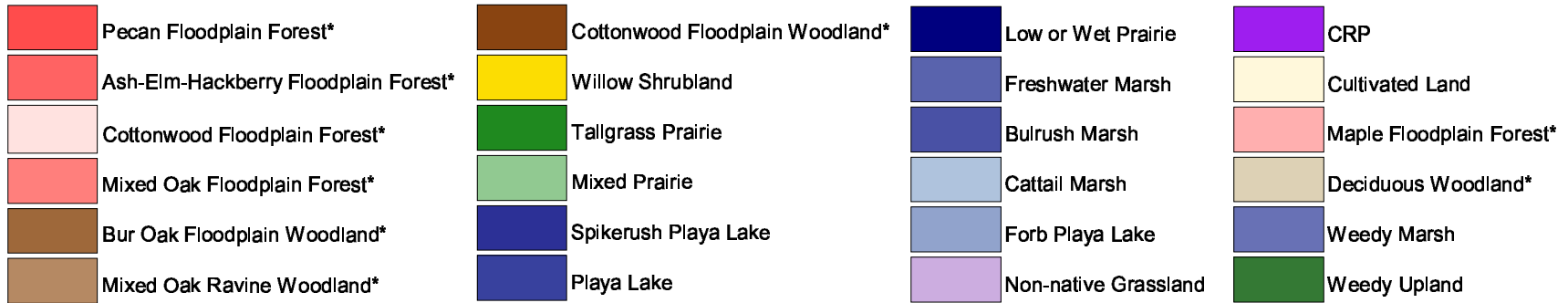
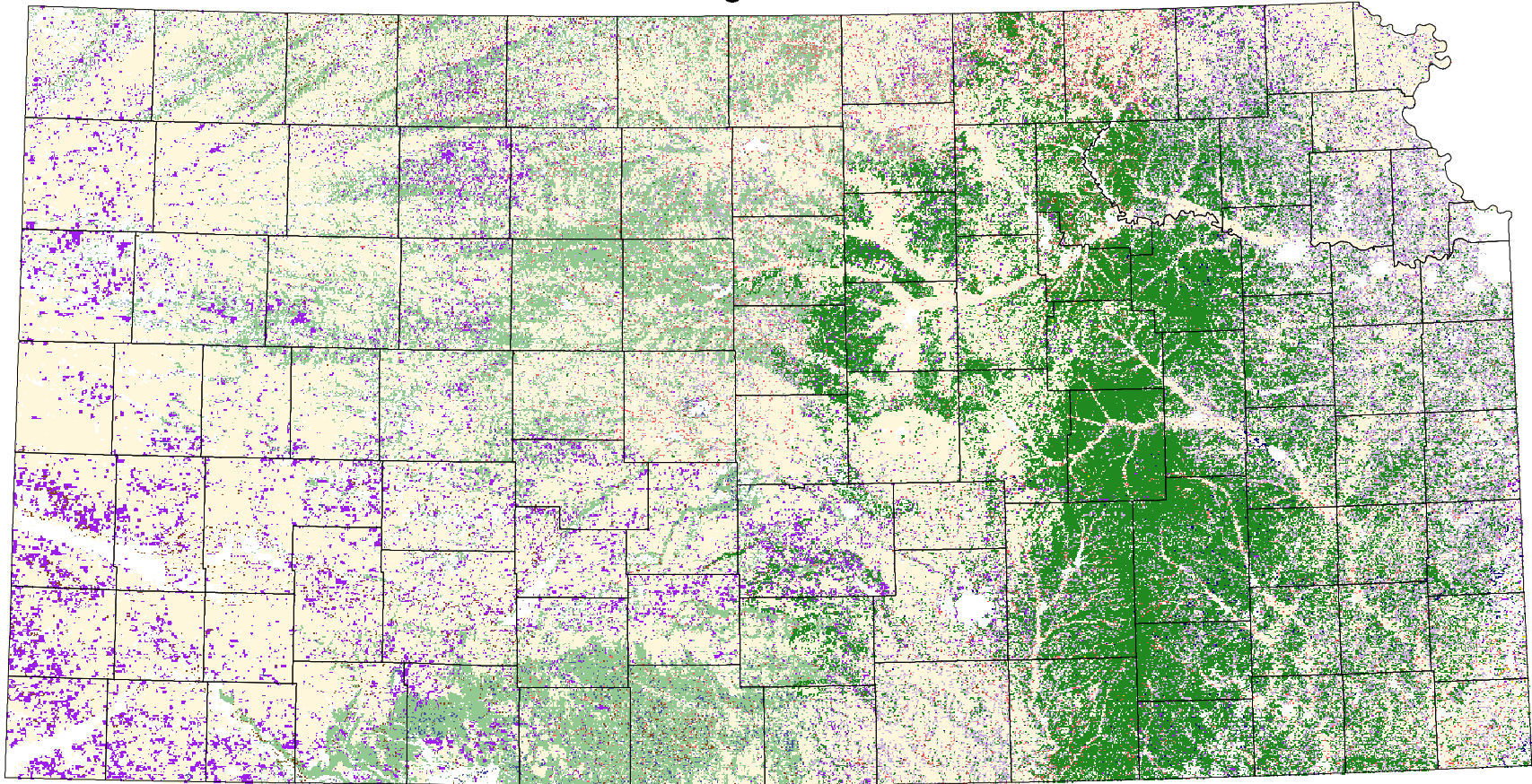
*Birds of Kansas,
Horned Lark*

Range from Johnsgard, 1998
The Birds of Nebraska

Habitat

All shaded counties will be included in the possible distribution of the species.

Red-winged Blackbird



* 30 m edge next to open habitats