

Habitat Model for Species: Lark Sparrow

Alpha Code: **LASP** Status: **Breeding**

[Distribution Map](#)

[Habitat Map](#)

Landcover Category

0 - Comments

[KS GAP] Map edge (30 m) of forests or woodlands next to other habitats
Swanson, 1996
Newman, 1970

Faanes, 1987

Zimmerman, 1993
McNair, 1985

Habitat Restrictions

Comments

Literature review.
Nests were usually placed at the base of herbaceous or woody plants which provided shade. Three were in short grasses and were relatively unprotected. Considered an edge spp. In ND wooded draws in a mixed-grass prairie.
Erratic species on Konza.
Nests are built on the ground far more frequently than above ground except in CA, TX, and OK. Prefer open habitats with sandy or poor soil.

03 - Post Oak-Blackjack Oak

Forest

[KS GAP] 30 m edge adjacent to selected open habitats.
Wiens, 1963 next to prairie

05 - Ash-Elm-Hackberry

Floodplain Forest

[KS GAP] 30 m edge adjacent to selected open habitats.
Stewart, 1975 adjacent to grassland edge
Faanes, 1987 draws next to mixedgrass prairies

06 - Cottonwood Floodplain

Forest

[KS GAP] 30 m edge adjacent to selected open habitats.
Martin and Parrish, 2000 edge

07 - Mixed Oak Floodplain

[KS GAP] 30 m edge adjacent to selected open habitats.
Stewart, 1975 adjacent to grassland edge

08 - Bur Oak Floodplain

Woodland

[KS GAP] 30 m edge adjacent to selected open habitats.
Stewart, 1975 adjacent to grassland edge

09 - Mixed Oak Ravine

[KS GAP] 30 m edge adjacent to selected open habitats.
Stewart, 1975 adjacent to grassland edge

10 - Post Oak-Blackjack Oak

Woodland

[KS GAP] 30 m edge adjacent to selected open habitats.
Wiens, 1963 next to prairie

11 - Cottonwood Floodplain

Woodland

[KS GAP] 30 m edge adjacent to selected open habitats.
Martin and Parrish, 2000 edge

12 - Sandsage Shrubland

Martin and Parrish, 2000

17 - Tallgrass Prairie

Klute and Robel, 1997
Newman, 1970
Zimmerman, 1993
Helzer and Jelinski, 1999
Kahl et al., 1985
Martin and Parrish, 2000

sparse litter

18 - Sand Prairie

Bent, 1968
Griebel et al., 1998
Martin and Parrish, 2000

19 - Sandstone Prairie - not mapped

Klute and Robel, 1997
Newman, 1970
Helzer and Jelinski, 1999
Martin and Parrish, 2000

20 - Western Wheatgrass

Faanes, 1987
Martin and Parrish, 2000

22 - Mixed Prairie

Klute and Robel, 1997
Newman, 1970
Faanes, 1987
Helzer and Jelinski, 1999
Martin and Parrish, 2000

24 - Alkali Sacaton Prairie

Martin and Parrish, 2000

25 - Shortgrass Prairie

Bent, 1968
Martin and Parrish, 2000

36 - Cottonwood Savanna - not mapped

Martin and Parrish, 2000

edge

37 - Winterfat - Blue Grama Prairie - not mapped

Martin and Parrish, 2000

40 - Non-native Grassland

Martin and Parrish, 2000

41 - CRP

Klute and Robel, 1997

60 - Mixed Prairie-Disturbed Land

Martin and Parrish, 2000

71 - Weedy Upland

Martin and Parrish, 2000

91 - Ozark Sandstone Glade / Prairie - not mapped

Wiens, 1963
Faanes, 1987
Martin and Parrish, 2000

**92 - Ozark Limestone Glade -
not mapped**

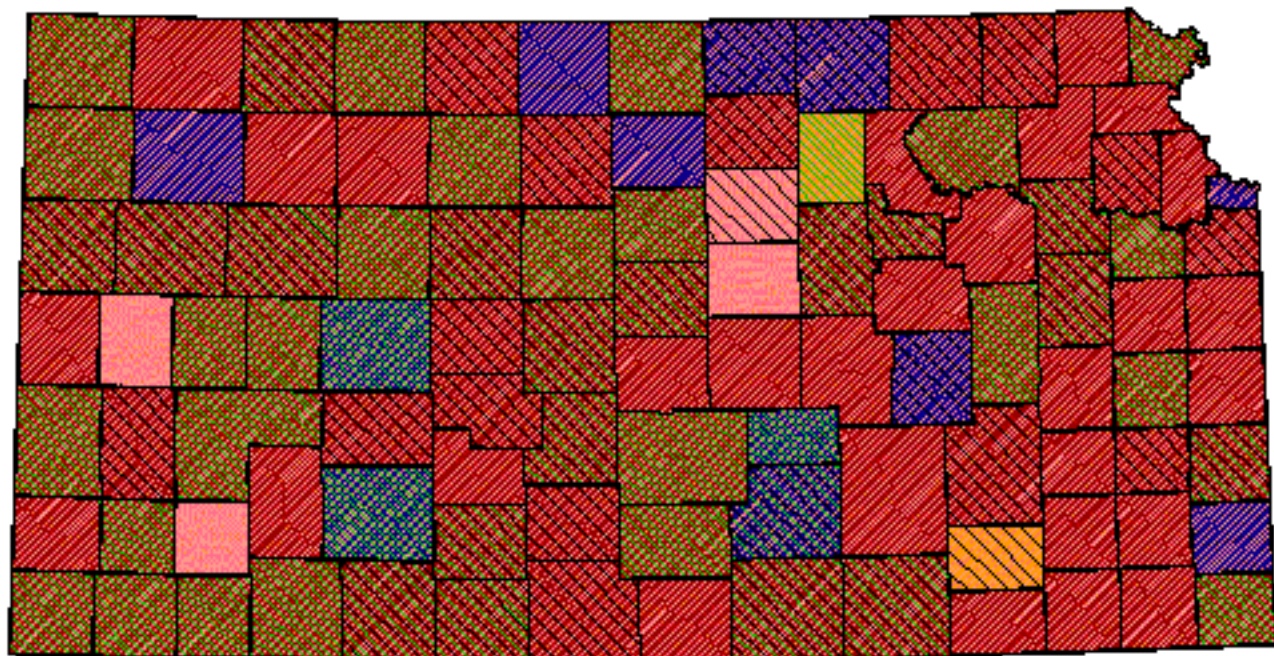
Faanes, 1987

Martin and Parrish, 2000

Reference List

1. Bent, A. C. 1968. Life histories of North American cardinals, grosbeaks, buntings, towhees, finches, sparrows, and allies. L. A. Oliver, Jr., editor. United States National Museum Bulletin. No. 237.
2. Faanes, C. A. 1987. Breeding birds and vegetation structure in western North Dakota wooded draws. *Prairie Naturalist* 19(4):209-220.
3. Griebel, R. L., S. L. Winter, and A. A. Steuter. 1998. Grassland birds and habitat structure in sandhills prairie managed using cattle or bison plus fire. *Great Plains Research* 8:255-268.
4. Helzer, C. J. and D. E. Jelinski. 1999. The relative importance of patch area and perimeter-area ratio to grassland breeding birds. *Ecological Applications* 9(4):1448-1458.
5. Kahl, R. B., T. S. Baskett, J. A. Ellis, and J. N. Burroughs. 1985. Characteristics of summer habitats of selected nongame birds in Missouri. University of Missouri Agriculture Experiment Station Research Bulletin 1056. University of Missouri, Columbia, Missouri, USA.
6. Klute, D. S. and R. J. Robel. 1997. Will conversion of Conservation Reserve Program (CRP) lands to pasture be detrimental for grassland birds in Kansas? *American Midland Naturalist* 137:206-212.
7. Martin, J. W. and J. R. Parrish. 2000. Lark Sparrow. A. Poole and F. Gill, editors. *The Birds of North America*. No. 488. The American Ornithologists' Union and The Academy of Natural Sciences, Philadelphia, Pennsylvania, USA.
8. McNair, D. B. 1985. A comparison of oology and nest record card data in evaluating the reproductive biology of Lark Sparrows, *Chondestes grammacus*. *Southwestern Naturalist* 30(2):213-224.
9. Newman, G. A. 1970. Cowbird parasitism and nesting success of Lark Sparrows in southern Oklahoma. *Wilson Bulletin* 82(3):304-309.
10. Stewart, R. E. 1975. *Breeding birds of North Dakota*. Harrison Smith, Lund Press, Minneapolis, Minnesota, USA.
11. Swanson, D. A. 1996. Nesting ecology and nesting habitat requirements of Ohio's grassland-nesting birds: A literature review. *Ohio Fish and Wildlife Report* 13. Ohio Department of Natural Resources, Division of Wildlife, Columbus, Ohio, USA.
12. Wiens, J. A. 1963. Aspects of cowbird parasitism in southern Oklahoma. *Wilson Bulletin* 75(2):130-139.
13. Zimmerman, J. L. 1993. *The Birds of Konza*. University Press of Kansas, Lawrence, Kansas, USA.

Lark Sparrow



Kansas Breeding Bird Atlas

Confirmed Breeding

Probable Breeding

Possible Breeding

Breeding Bird Survey

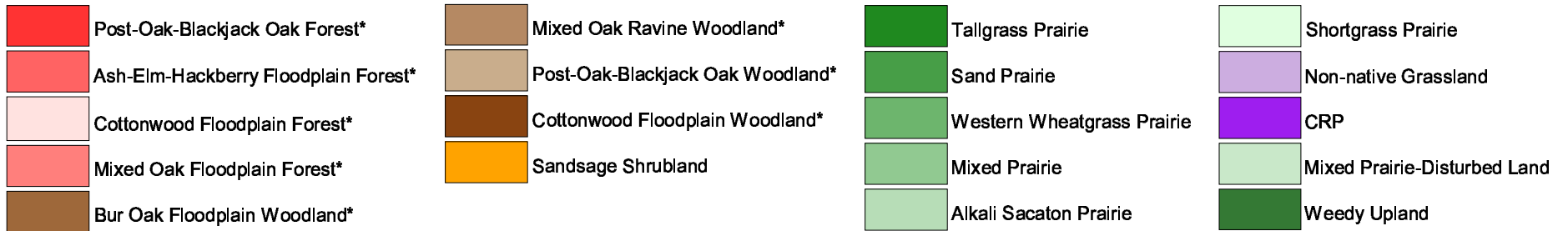
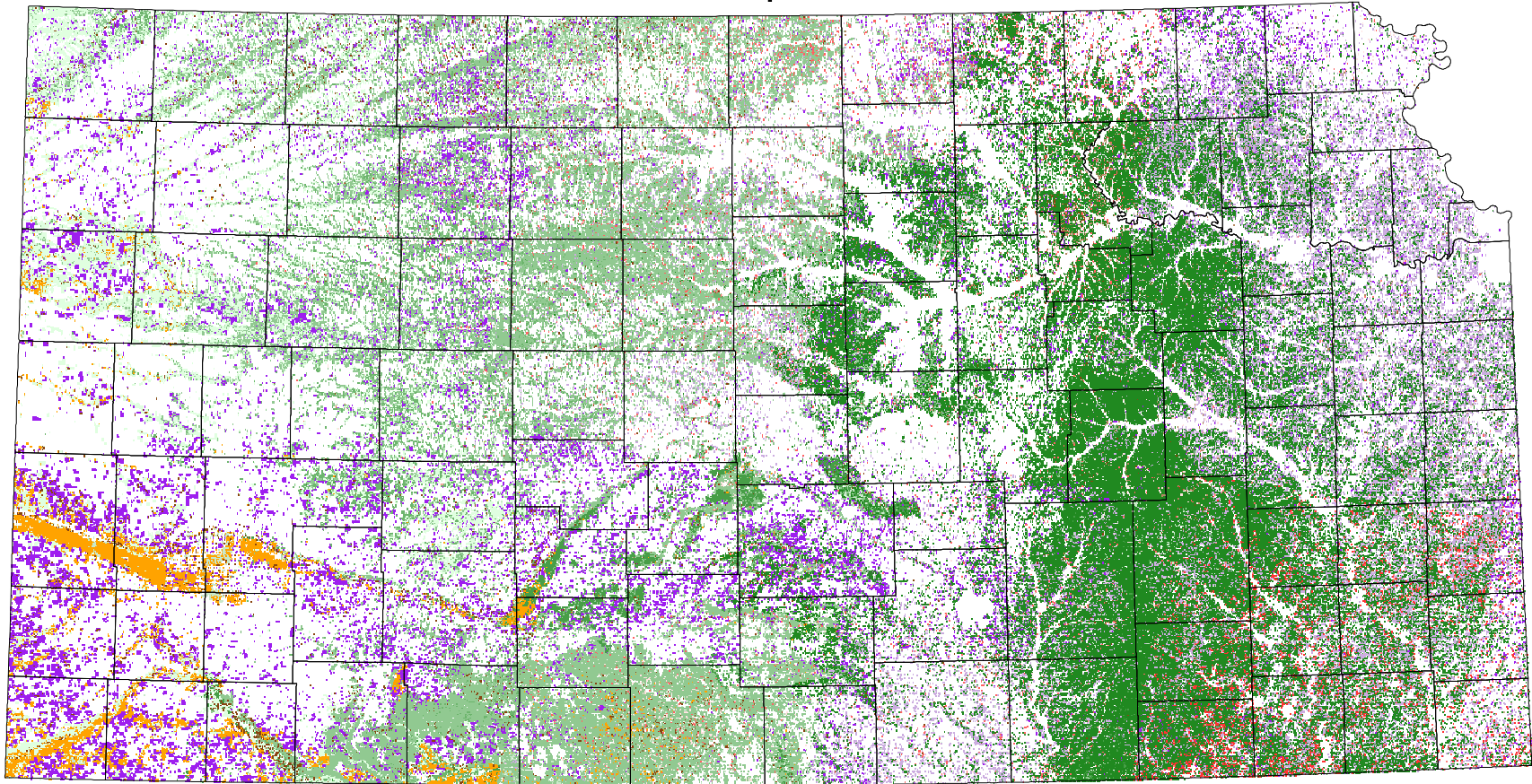
*Birds of Kansas,
Horned Lark*

Range from Johnsgard, 1998
The Birds of Nebraska

Habitat

All shaded counties will be included in the possible distribution of the species.

Lark Sparrow



* 30 m edge adjacent to mapped open habitats