

Habitat Model for Species: Indigo Bunting

Alpha Code: **INBU** Status: **Breeding**

[Distribution Map](#)

[Habitat Map](#)

Landcover Category

0 - Comments

Sibley and Short, 1959
Carey and Nolan, 1979

Stauffer and Best, 1986

Nolan, 1963

Horn, 1984

Wayne and Mack, 1995

Cable et al., 1992

[KS GAP]

Map 30 m edge of forests and woodlands (1-11,14,15,42,50, 51,52, and 55) next to open habitats. Map 30 m edge of open habitats (40,44, and 71) next to selected forest and woodland

Habitat Restrictions

Comments

66 of 95 specimens from 21 localities were hybrids. Study sites:(1) dense stands of deciduous trees, >7 m with eroded bare areas. (2) cut over or cultivated 3-5 years prior; lush ground cover of forbs and grasses and scattered clumps of blackberry, roses, and small saplings.

nest-site characteristics; nested lower than other species.

Old fields, areas with grasses and thickets of blackberry that had numerous dense stands of small trees, in large patches of broomsedge and fields of blackberry, and brushy hawthorn fields. Avoided can be considered characteristic of young clearcuts. Atypical habitat use: Nested in corn field during second nesting. Almost no brush or shrubbery exits Found only in windbreaks larger than 4 ha.

01 - Maple-Basswood Forest

Stauffer and Best, 1980

Johnston, 1947

Payne, 1992

[KS GAP]

edge next to open habitats
30 m edge.

edge and in interior of 56 and 64 acre woods.

02 - Oak-Hickory Forest

Stauffer and Best, 1980

Burhans, 1997

Suarez et al., 1997

Gates and Gysel, 1978

Kroodsma, 1984

Kahl et al., 1985

Payne, 1992

[KS GAP]

edge
edges
edge next to brome grass field
edge
clearings
edge next to open habitats
30 m edge.

powerline corridor

03 - Post Oak-Blackjack Oak

Forest

Payne, 1992

[KS GAP]

edge next to open habitats
30 m edge.

04 - Pecan Floodplain Forest

Fawver, 1947

Payne, 1992

[KS GAP]

edge next to open habitats
30 m edge.

05 - Ash-Elm-Hackberry

Floodplain Forest

Stauffer and Best, 1980

Kroodsma, 1975

Burhans, 1997

Fawver, 1947

Zimmerman and Tatschl, 1975

Obermeyer, 1992

Payne, 1992

[KS GAP]

edge next to open habitats
30 m edge.

riparian forest

06 - Cottonwood Floodplain

Forest

Emlen et al., 1975
Zimmerman and Tatschl, 1975
Payne, 1992 edge next to open habitats
[KS GAP] 30 m edge.

07 - Mixed Oak Floodplain

Zimmerman, 1993
Payne, 1992 edge next to open habitats
[KS GAP] 30 m edge.

08 - Bur Oak Floodplain

Woodland

Zimmerman, 1993
Johnston, 1947
Payne, 1992 edge next to open habitats
[KS GAP] 30 m edge. edge and in interior of 56 and 64 acre woods.

09 - Mixed Oak Ravine

Zimmerman, 1993
Payne, 1992 edge next to open habitats
[KS GAP] 30 m edge.

10 - Post Oak-Blackjack Oak

Woodland

Payne, 1992 edge next to open habitats
[KS GAP] 30 m edge.

11 - Cottonwood Floodplain

Woodland

Emlen et al., 1975
Kroodsmas, 1975 edge
Payne, 1992 edge next to open habitats riparian forest
[KS GAP] 30 m edge.

14 - Willow Shrubland

Kroodsmas, 1975 edge riparian forest
Payne, 1992 edge next to open habitats
[KS GAP] 30 m edge.

15 - Buttonbush (Swamp)

Shrubland

Payne, 1992
[KS GAP] 30 m edge.

40 - Non-native Grassland

Stauffer and Best, 1980
Gates and Gysel, 1978 edge next to forest
[KS GAP] 30 m edge adjacent to forest or woodlands.

42 - Salt Cedar or Tamarisk

Shrubland

Brown and Trosset, 1989
Payne, 1992 edge next to open habitats
[KS GAP] 30 m edge.

44 - Cultivated Land

Zimmerman and Tatschl, 1975
[KS GAP] 30 m edge adjacent to forest or woodlands.

50 - Deciduous Forest-Mined

Land

Payne, 1992 edge next to open habitats
[KS GAP] 30 m edge.

51 - Maple Floodplain Forest

Stauffer and Best, 1980

Fawver, 1947

Payne, 1992 edge next to open habitats
[KS GAP] 30 m edge.

52 - Evergreen

Forest-Disturbed Land

Payne, 1992 edge next to open habitats

Below mapping scale: brushy and weedy habitats along cultivated fields, roads, railroads, and power line corridors.

[KS GAP] 30 m edge.

55 - Deciduous Woodland

Payne, 1992 edge next to open habitats
[KS GAP] 30 m edge.

71 - Weedy Upland

[*****] Habitat not present within model parameters.

Zimmerman and Tatschl, 1975

Payne, 1992

[KS GAP] 30 m edge adjacent to forest or woodlands.

91 - Ozark Sandstone Glade /

Prairie - not mapped

Stauffer and Best, 1980

Burhans, 1997

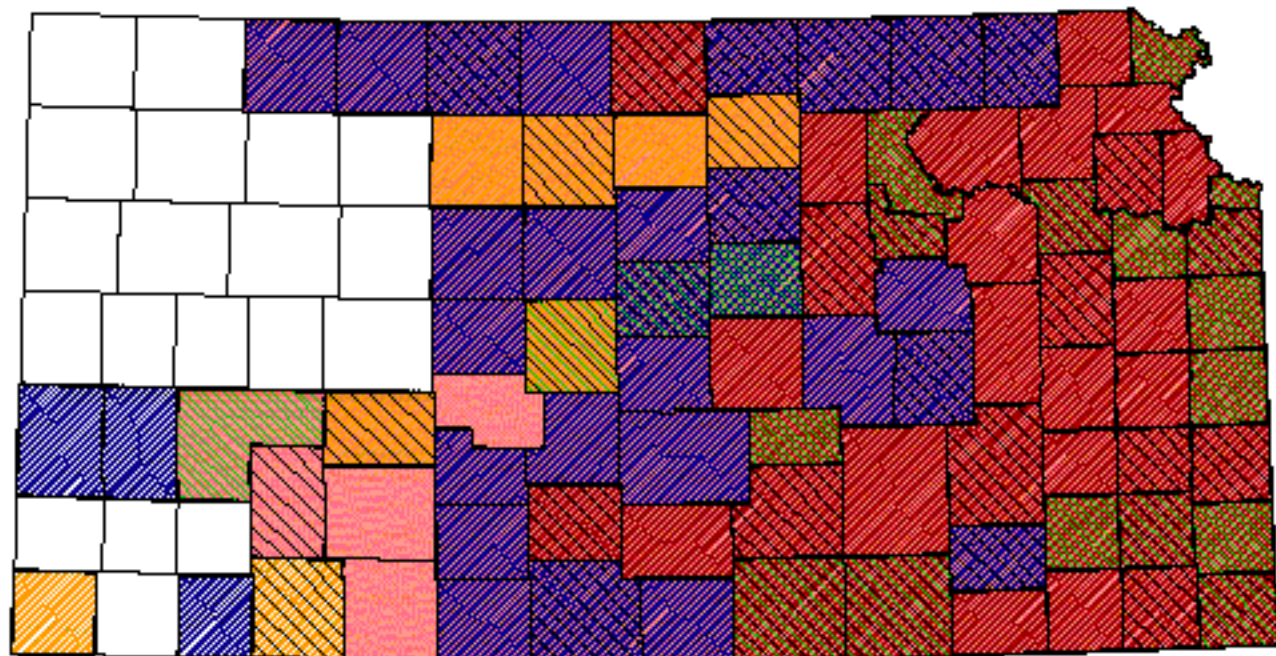
Reference List

1. Brown, B. T. and M. W. Trosset. 1989. Nesting-habitat relationships of riparian birds along the Colorado River in Grand Canyon, Arizona. *Southwestern Naturalist* 34(2):260-270.
2. Burhans, D. E. 1997. Habitat and microhabitat features associated with cowbird parasitism in two forest edge cowbird hosts. *Condor* 99(4):866-872.
3. Cable, T. T., R. L. Schroeder, V. Brack, Jr., and P. S. Cook. 1992. Summer bird use of Kansas windbreaks. *Prairie Naturalist* 24(3):175-184.
4. Carey, M. and V. Nolan, Jr. 1979. Population dynamics of Indigo Buntings and the evolution of avian polygyny. *Evolution* 33(4):1180-1192.
5. Emlen, S. T., J. D. Rising, and W. L. Thompson. 1975. A behavioral and morphological study of sympatry in the Indigo and Lazuli Buntings of the Great Plains. *Wilson Bulletin* 87(2):145-177.
6. Fawver, B. J. 1947. Bird population of an Illinois floodplain forest. *Transactions of the Illinois State Academy of Science* 40:178-189.
7. Gates, J. E. and L. W. Gysel. 1978. Avian nest dispersion and fledging success in field-forest ecotones. *Ecology* 59(5):871-883.
8. Horn, J. C. 1984. Short-term changes in bird communities after clearcutting in western North Carolina. *Wilson Bulletin* 96(4):684-689.
9. Johnston, V. R. 1947. Breeding birds of the forest edge in Illinois. *Condor* 49(2):45-53.
10. Kahl, R. B., T. S. Baskett, J. A. Ellis, and J. N. Burroughs. 1985. Characteristics of summer habitats of selected nongame birds in Missouri. University of Missouri Agriculture Experiment Station Research Bulletin 1056. University of Missouri, Columbia, Missouri, USA.
11. Kroodsma, R. L. 1975. Hybridization in Buntings (*Passerina*) in North Dakota and eastern Montana. *Auk* 92:66-80.
12. _____. 1984. Ecological factors associated with degree of edge effect in breeding birds. *Journal of Wildlife Management* 48(2):418-425.
13. Nolan, V., Jr. 1963. Reproductive success of birds in a deciduous scrub habitat. *Ecology* 44(2):305-313.
14. Obermeyer, B. 1992. Effect of logging on breeding bird diversity in riparian forests on Fall River Wildlife Area. *Kansas Ornithological Society Bulletin* 43(3):21-27.
15. Payne, R. B. 1992. Indigo Bunting. A. Poole and F. Gill, editors. *The Birds of North America*. No. 4. The American Ornithologists' Union and The Academy of Natural Sciences, Philadelphia, Pennsylvania, USA.
16. Sibley, C. G. and L. L. Short, Jr. 1959. Hybridization in the Buntings (*Passerina*) of the Great Plains. *Auk* 76:443-463.
17. Stauffer, D. F. and L. B. Best. 1980. Habitat selection by birds of riparian communities: evaluating effects of habitat alterations. *Journal of Wildlife Management* 44(1):1-15.
18. _____. 1986. Nest-site characteristics of open-nesting birds in riparian habitats in Iowa. *Wilson Bulletin* 98(2):231-242.
19. Suarez, A. V., K. S. Pennig, and S. K. Robinson. 1997. Nesting success of a disturbance-dependent songbird on different kinds


of edges. Conservation Biology 11(4):928-935.

20. Wayne, H. D. and K. Mack. 1995. Indigo Buntings, *Passerina cyanea*, nesting in cornfields. Kentucky Warbler 71(2):35.
21. Zimmerman, J. L. 1993. The Birds of Konza. University Press of Kansas, Lawrence, Kansas, USA.
22. Zimmerman, J. L. and J. L. Tatschl. 1975. Floodplain birds of Weston Bend, Missouri River. Wilson Bulletin 87(2):196-208.


Indigo Bunting





Kansas Breeding Bird Atlas


 Confirmed Breeding

 Probable Breeding

 Possible Breeding

 Breeding Bird Survey

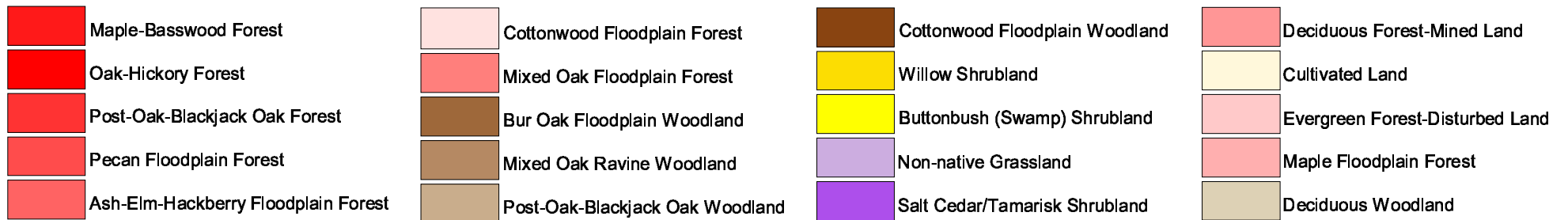
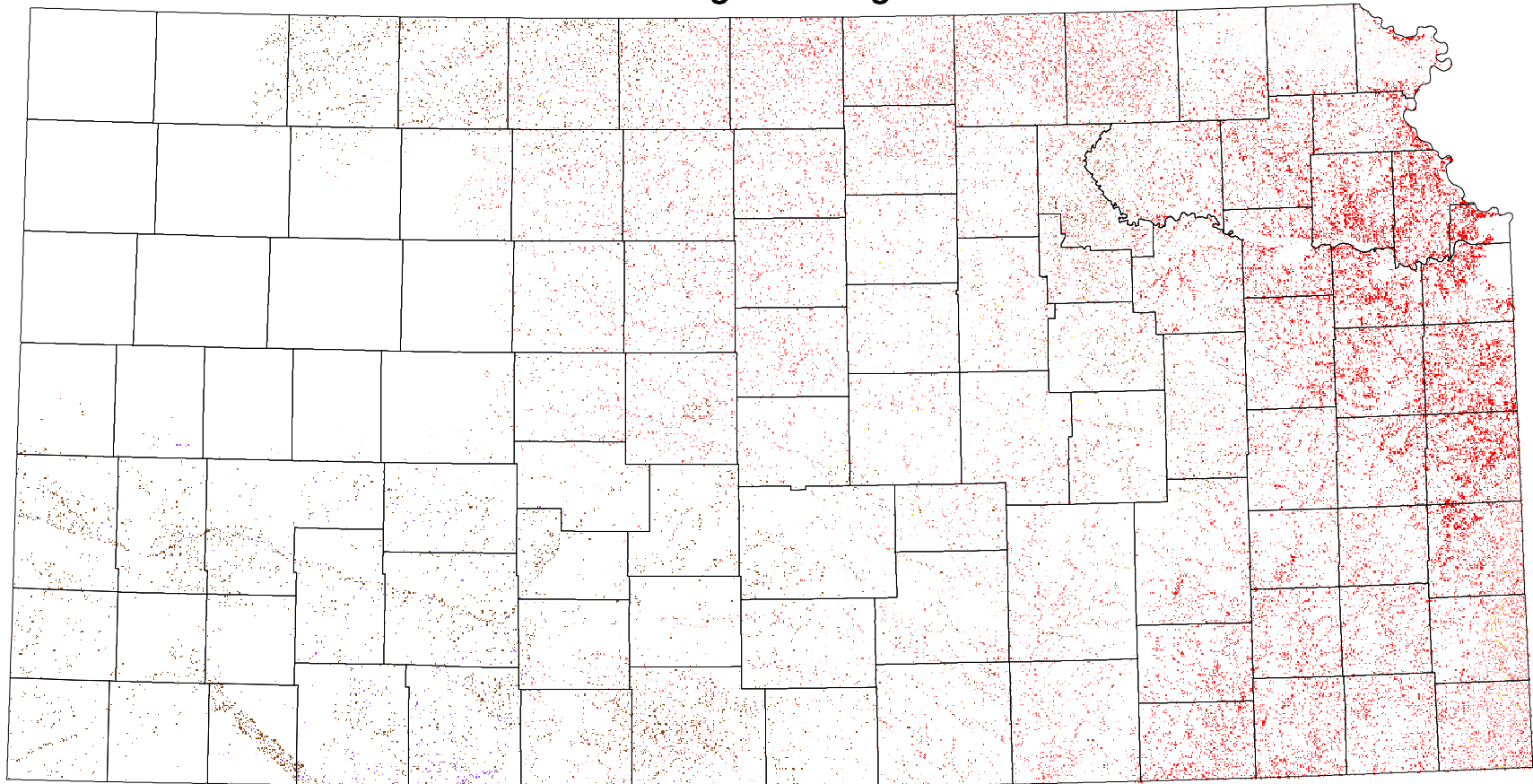
 *Birds of Kansas,*
Horned Lark

 Range from Johnsonsgard, 1998
The Birds of Nebraska

Habitat

All shaded counties will be included in the possible distribution of the species.

Indigo Bunting



30 m edge for all habitats