

Habitat Model for Species: **House Finch**

Alpha Code: **HOFI** Status: **Resident**

[Distribution Map](#)

[Habitat Map](#)

Landcover Category

0 - Comments

[KS GAP]

Habitat Restrictions

30 m edge of selected forests, woodlands, and shrublands (4-7,42,51,52).

Comments

04 - Pecan Floodplain Forest

Hill, 1993

Johnsgard, 1979

[KS GAP]

Map 30 m edge next to open habitats.

river bottoms thickets

05 - Ash-Elm-Hackberry Floodplain Forest

Hill, 1993

Johnsgard, 1979

[KS GAP]

Map 30 m edge next to open habitats.

river bottoms thickets

06 - Cottonwood Floodplain Forest

Hill, 1993

Johnsgard, 1979

[KS GAP]

Map 30 m edge next to open habitats.

river bottoms thickets

07 - Mixed Oak Floodplain

Hill, 1993

Johnsgard, 1979

[KS GAP]

Map 30 m edge next to open habitats.

river bottoms thickets

08 - Bur Oak Floodplain

Woodland

Hill, 1993

Johnsgard, 1979

river bottoms thickets

09 - Mixed Oak Ravine

Hill, 1993

Johnsgard, 1979

open woodland

10 - Post Oak-Blackjack Oak

Woodland

Johnsgard, 1979

open woodland

11 - Cottonwood Floodplain

Woodland

Hill, 1993

Johnsgard, 1979

river bottoms thickets

42 - Salt Cedar or Tamarisk

Shrubland

Hill, 1993

[KS GAP]

Map 30 m edge next to open habitats.

51 - Maple Floodplain Forest

Hill, 1993

Johnsgard, 1979

[KS GAP]

Map 30 m edge next to open habitats.

river bottoms thickets

52 - Evergreen

Forest-Disturbed Land

Hill, 1993

[KS GAP]

Map 30 m edge next to open habitats.

55 - Deciduous Woodland

Johnsgard, 1979

open woodland

81 - Urban Areas

Holtz, 1998

Hill, 1993

Lohofener, 1977

Podrebarac, 1992

Thompson and Ely, 1992

Nesting on campus on a building.

urban, suburban areas

Nest on tops of ornamental conifers.

Abundant at backyard feeders (in winter).

Nests in trees, cavities, on ledges, or in and about buildings. Spruce is favored tree.

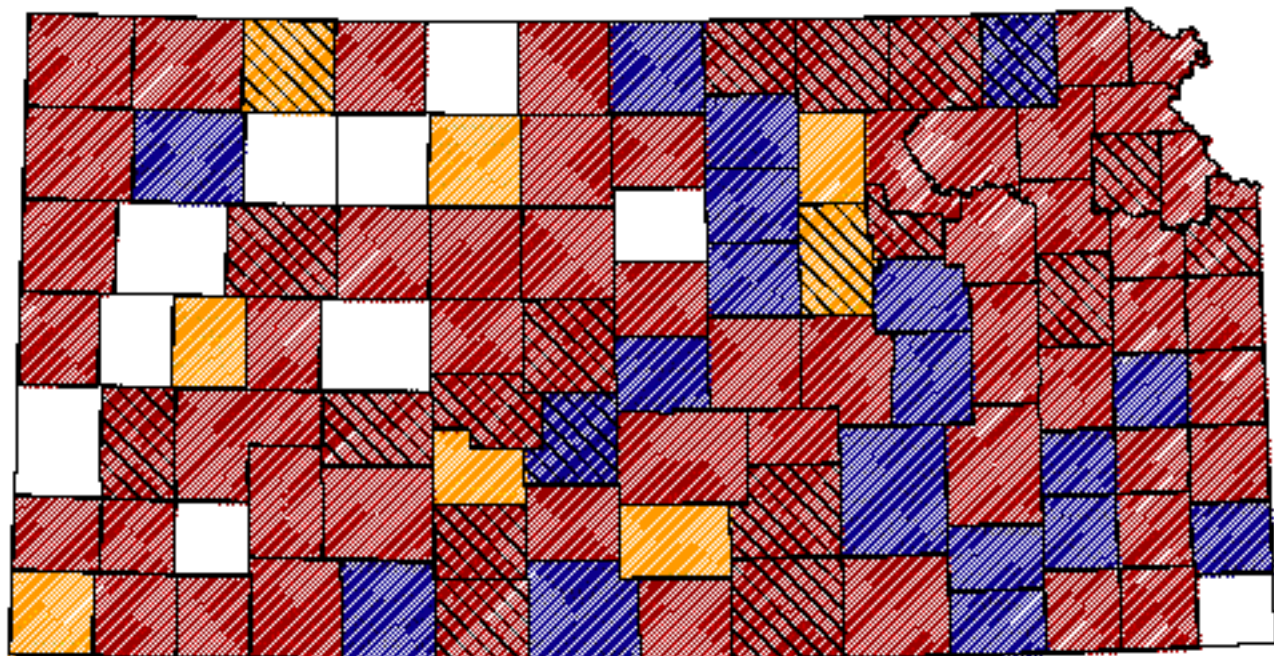
suburbs, towns

Johnsgard, 1979

Reference List


1. Hill, G. E. 1993. House Finch. A. G. F. Poole, editors. The Birds of North America. No. 46. The American Ornithologists' Union and The Academy of Natural Sciences of Philadelphia, Philadelphia, Pennsylvania, USA.
2. Holtz, R. 1998. House Finch reuses nest. *Loon* 70(2):119-120.
3. Johnsgard, P. A. 1979. Birds of the Great Plains. University of Nebraska Press, Lincoln, Nebraska, USA.
4. Lohofener, M. 1977. Nesting of the House Finch in northwestern Kansas. *Kansas Ornithological Society Bulletin* 28(1):9-10.
5. Podrebarac, D. K. 1992. The distribution of the House Finch in Kansas and studies of competition between the House Finch and the House Sparrow in Kansas during the winter. Thesis, Emporia State University, Emporia, Kansas, USA.
6. Thompson, M. C. and C. Ely. 1992. Birds in Kansas: Volume II. Public Education Series No. 12. University of Kansas Museum of Natural History, University Press of Kansas, Lawrence, Kansas, USA.

House Finch




Kansas Breeding Bird Atlas

 Confirmed Breeding

 Probable Breeding

 Possible Breeding

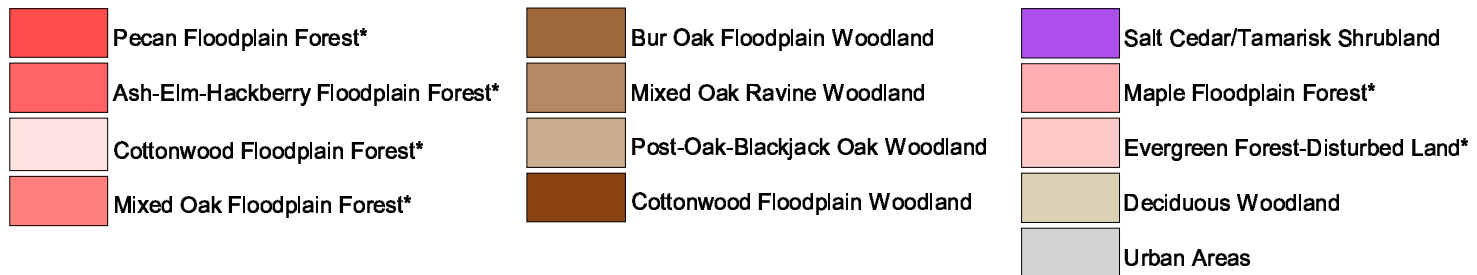
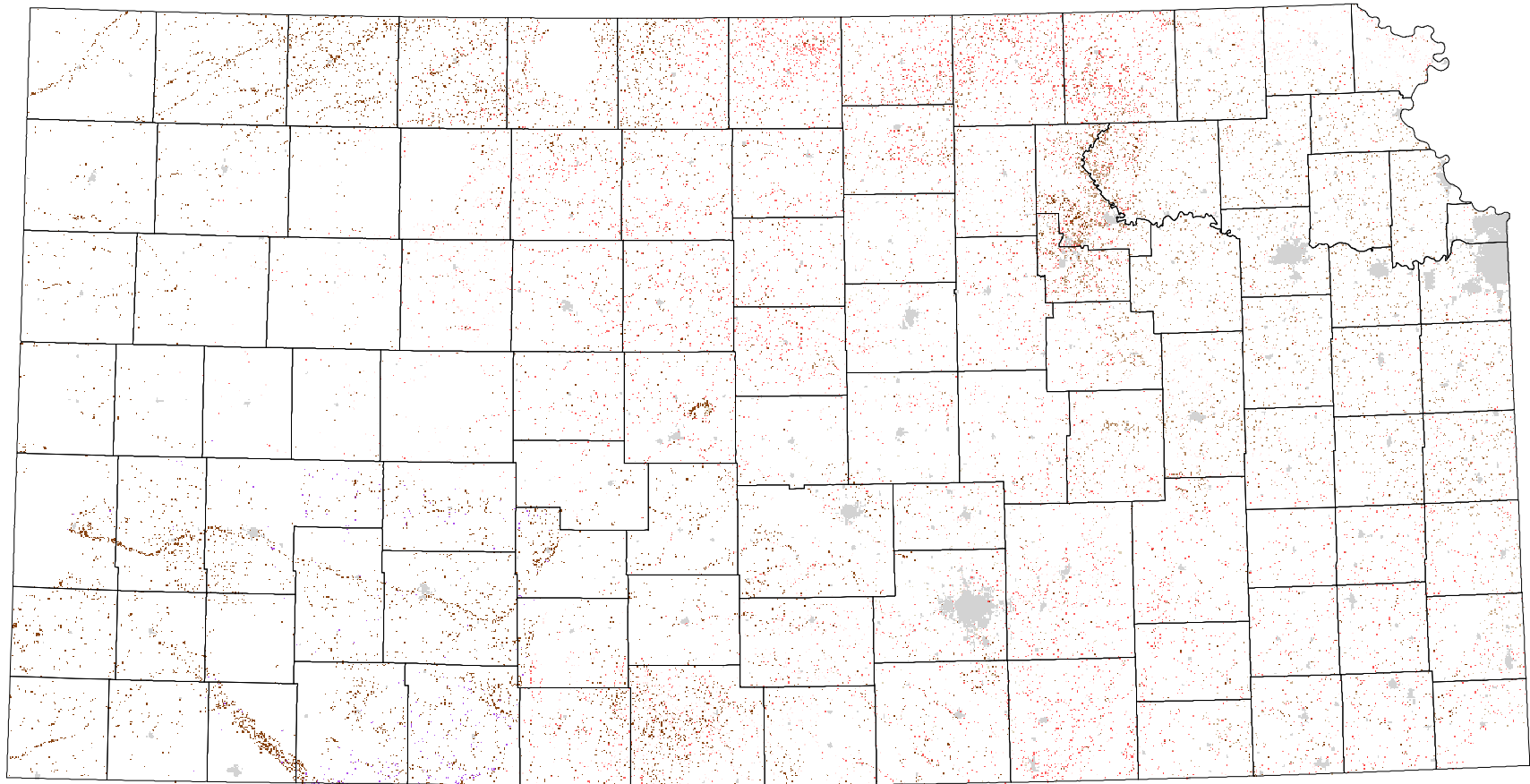
 Breeding Bird Survey

 Birds of Kansas,
Horned Lark

 Range from Johnson, 1888
The Birds of Nebraska

All shaded counties will be included in the distribution of the species.

House Finch



* 30 m edge next to open habitats