

Habitat Model for Species: Field Sparrow

Alpha Code: **FISP** Status: **Resident**

[Distribution Map](#)

[Habitat Map](#)

Landcover Category

0 - Comments

Basore et al., 1986
Carey et al., 1994

Zimmerman, 1993

Robel and Browning, 1981

[KS GAP] Map 30 m edge of all forests and woodlands (1-11, 50-55) if next to grasslands or ag land.

[Reviewer] Nests within shrub component (e.g. buckbrush) of grasslands.

Habitat Restrictions

Comments

Small numbers nested in no-till soybean-corn
Nests rarely found over 40m from any woody vegetation.

nests in the rock outcrop shrub community and in prairie stream drainages containing small trees and patches of brush.

Nesting in wildlife plot planted to *Rosa multiflora*, *Eleagnus umbellata*, and *Prunus tomentosa*.

Zimmerman: Nests within shrub component (e.g. buckbrush) of grasslands.

01 - Maple-Basswood Forest

Stauffer and Best, 1980

Johnston, 1947

Sousa, 1983

[KS GAP]

edge
forest/woodland edge
30 m edge.

02 - Oak-Hickory Forest

Stauffer and Best, 1980

Sousa, 1983

Burhans, 1997

Gates and Gysel, 1978

Kroodsma, 1984

[KS GAP]

forest/woodland edge
edge
edge
edge
30 m edge.

powerline corridor

03 - Post Oak-Blackjack Oak

Forest

Sousa, 1983

Shugart and James, 1973

[KS GAP]

forest/woodland edge
edge
30 m edge.

04 - Pecan Floodplain Forest

Sousa, 1983

[KS GAP]

forest/woodland edge
30 m edge.

05 - Ash-Elm-Hackberry

Floodplain Forest

Faanes, 1987

Faanes, 1984

Sousa, 1983

Burhans, 1997

Platt, 1975

[KS GAP]

Found on edge.

forest/woodland edge
edge

30 m edge.

nesting in wooded draws

06 - Cottonwood Floodplain

Forest

Sousa, 1983

[KS GAP]

forest/woodland edge
30 m edge.

07 - Mixed Oak Floodplain

Sousa, 1983

Zimmerman, 1993

[KS GAP]

forest/woodland edge
edge
30 m edge.

08 - Bur Oak Floodplain

Woodland

Johnston, 1947 edge
Sousa, 1983 forest/woodland edge
Dinsmore et al., 1984 woodland edge
Zimmerman, 1993 edge
[KS GAP] 30 m edge.

09 - Mixed Oak Ravine

Sousa, 1983 forest/woodland edge
Dinsmore et al., 1984 woodland edge
Zimmerman, 1993 edge
[KS GAP] 30 m edge.

10 - Post Oak-Blackjack Oak

Woodland

Wiens, 1963 edge
Sousa, 1983 forest/woodland edge
Dinsmore et al., 1984 woodland edge
[KS GAP] 30 m edge.

11 - Cottonwood Floodplain

Woodland

Faanes, 1984 nesting in wooded draws
Sousa, 1983 forest/woodland edge
[KS GAP] 30 m edge.

17 - Tallgrass Prairie

George et al., 1979 small plots within a wildlife area.
Kahl et al., 1985 with shrubs or scattered trees.
Platt, 1975
Zimmerman, 1993 in brush areas (rock outcrop, prairie stream drainages).
[KS GAP] Map 30 m edge if next to selected forest or woodland edges.

36 - Cottonwood Savanna - not mapped

Carey et al., 1994 scattered woody vegetation.

40 - Non-native Grassland

Stauffer and Best, 1980 used for foraging, trees need to be near
Bryan and Best, 1991 Observed nesting in waterways.
Sousa, 1983 pasture
Dinsmore et al., 1984 weedy, brushy pasture
Basore et al., 1986 nested in strip cover in cropland.
Crooks, 1948 with forbs and scattered shrubs
O'leary and Nyberg, 2000 Most (5/7) nests were found in the 50 m edge habitat.
Gates and Gysel, 1978 edge
Carey et al., 1994
Bent, 1968 with brush
[KS GAP] Map 30 m edge if next to selected forest or woodland edges.

50 - Deciduous Forest-Mined

Land

Sousa, 1983 forest/woodland edge
[KS GAP] 30 m edge.

51 - Maple Floodplain Forest

Sousa, 1983 forest/woodland edge
[KS GAP] 30 m edge.

52 - Evergreen

Forest-Disturbed Land

Sousa, 1983 forest/woodland edge
Shugart and James, 1973 glade
Carey et al., 1994
[KS GAP] 30 m edge.

55 - Deciduous Woodland

Sousa, 1983 forest/woodland edge
Dinsmore et al., 1984 woodland edge
Carey et al., 1994
[KS GAP] 30 m edge.

71 - Weedy Upland

Best, 1978
Baicich and Harrison, 1997 old pastures and clearings overgrown with low scrub
and bushes
old field
Sousa, 1983
Dinsmore et al., 1984 weedy, brushy pasture
Beck and Watts, 1997
Best, 1974
Crooks, 1948
Kahl et al., 1985
Carey et al., 1994
Bent, 1968

91 - Ozark Sandstone Glade /

Prairie - not mapped

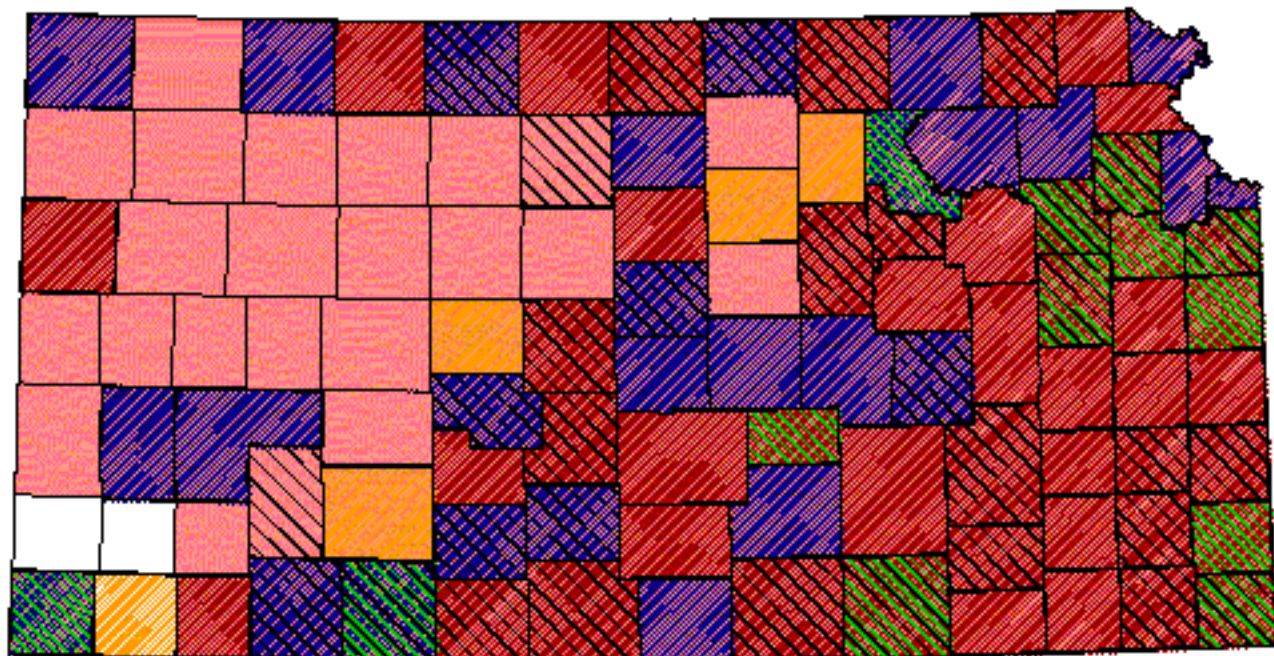
Burhans, 1997

Reference List

1. Baicich, P. J. and C. J. Harrison. 1997. A guide to the nests, eggs, and nestling of North American birds. Second edition. Academic Press, San Diego, California, USA.
2. Basore, N. S., L. B. Best, and J. B. Wooley, Jr. 1986. Bird nesting in Iowa no-tillage and tilled cropland. *Journal of Wildlife Management* 50(1):19-28.
3. Beck, C. W. and B. D. Watts. 1997. The effect of cover and food on space use by wintering Song Sparrows and Field Sparrows. *Canadian Journal of Zoology* 75:1636-1641.
4. Bent, A. C. 1968. Life histories of North American cardinals, grosbeaks, buntings, towhees, finches, sparrows, and allies. L. A. Oliver, Jr., editor. United States National Museum Bulletin. No. 237.
5. Best, L. B. 1978. Field Sparrow reproductive success and nesting ecology. *Auk* 95:9-22.
6. Best, L. B. 1974. Breeding ecology of the Field Sparrow (*Spizella pusilla*). Thesis, Montana State University, Bozeman, Montana, USA.
7. Bryan, G. G. and L. B. Best. 1991. Bird abundance and species richness in grassed waterways in Iowa rowcrop fields. *American Midland Naturalist* 126:90-102.
8. Burhans, D. E. 1997. Habitat and microhabitat features associated with cowbird parasitism in two forest edge cowbird hosts. *Condor* 99(4):866-872.
9. Carey, M., D. E. Burhans, and D. A. Nelson. 1994. Field Sparrow. A. Poole and F. Gill, editors. *The Birds of North America*. No. 103. The American Ornithologists' union and The Academy of Natural Sciences, Philadelphia, Pennsylvania, USA.
10. Crooks, M. P. 1948. Life History of the Field Sparrow *Spizella pusilla pusilla* (Wilson). Thesis, Iowa State College, Ames, Iowa, USA.
11. Dinsmore, J. J., K. H. Thomas, D. Koenig, C. P. Petersen, and M. D. Roosa. 1984. *Iowa Birds*. Iowa State University Press, Ames, Iowa, USA.
12. Faanes, C. A. 1984. Wooded islands in a sea of prairie. *American Birds* 38(1):3-6.
13. _____. 1987. Breeding birds and vegetation structure in western North Dakota wooded draws. *Prairie Naturalist* 19(4):209-220.
14. Gates, J. E. and L. W. Gysel. 1978. Avian nest dispersion and fledging success in field-forest ecotones. *Ecology* 59(5):871-883.
15. George, R. R., A. L. Farris, C. C. Schwartz, D. D. Humburg, and J. C. Coffey. 1979. Native prairie grass pastures as nest cover for upland birds. *Wildlife Society Bulletin* 7(1):4-9.
16. Johnston, V. R. 1947. Breeding birds of the forest edge in Illinois. *Condor* 49(2):45-53.
17. Kahl, R. B., T. S. Baskett, J. A. Ellis, and J. N. Burroughs. 1985. Characteristics of summer habitats of selected nongame birds in Missouri. University of Missouri Agriculture Experiment Station Research Bulletin 1056. University of Missouri, Columbia, Missouri, USA.
18. Kroodsmma, R. L. 1984. Ecological factors associated with degree of edge effect in breeding birds. *Journal of Wildlife Management* 48(2):418-425.
19. O'leary, C. H. and D. W. Nyberg. 2000. Treelines between fields reduce the density of grassland birds. *Natural Areas Journal*

- 20(3):243-249.
20. Platt, D. R. 1975. Breeding birds of Sand Prairie Natural History Reservation, Harvey County, Kansas. *American Birds* 29(6):1146-1151.
 21. Robel, R. J. and N. G. Browning. 1981. Comparative use of woody plantings by nongame birds in Kansas. *Wildlife Society Bulletin* 9(2):142-148.
 22. Shugart, H. H., Jr. and D. James. 1973. Ecological succession of breeding bird populations in northwestern Arkansas. *Auk* 90:62-77.
 23. Sousa, P. J. 1983. Habitat suitability index models: Field Sparrow. Biological Report 82(10.62). U.S. Department of the Interior, Fish and Wildlife Service, Washington, D.C., USA.
 24. Stauffer, D. F. and L. B. Best. 1980. Habitat selection by birds of riparian communities: evaluating effects of habitat alterations. *Journal of Wildlife Management* 44(1):1-15.
 25. Wiens, J. A. 1963. Aspects of cowbird parasitism in southern Oklahoma. *Wilson Bulletin* 75(2):130-139.
 26. Zimmerman, J. L. 1993. *The Birds of Konza*. University Press of Kansas, Lawrence, Kansas, USA.

Field sparrow




Kansas Breeding Bird Atlas

 Confirmed Breeding

 Probable Breeding

 Possible Breeding

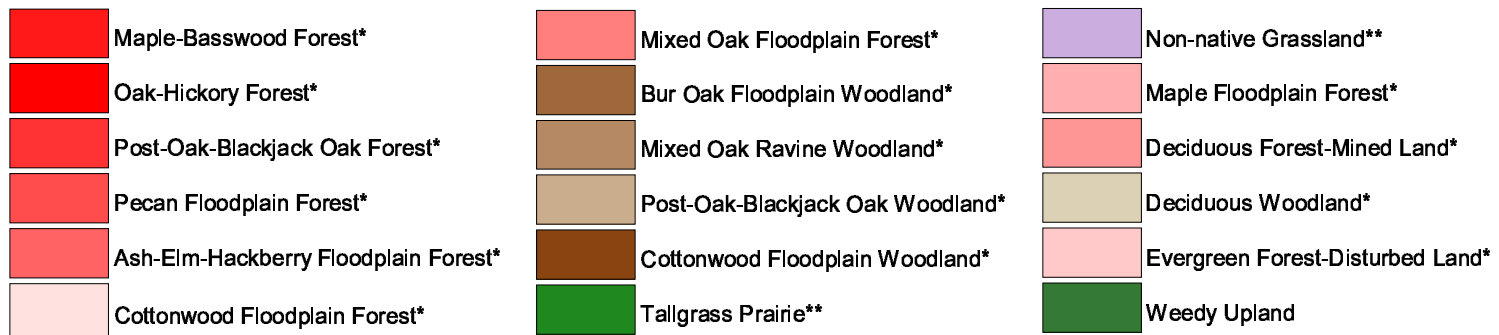
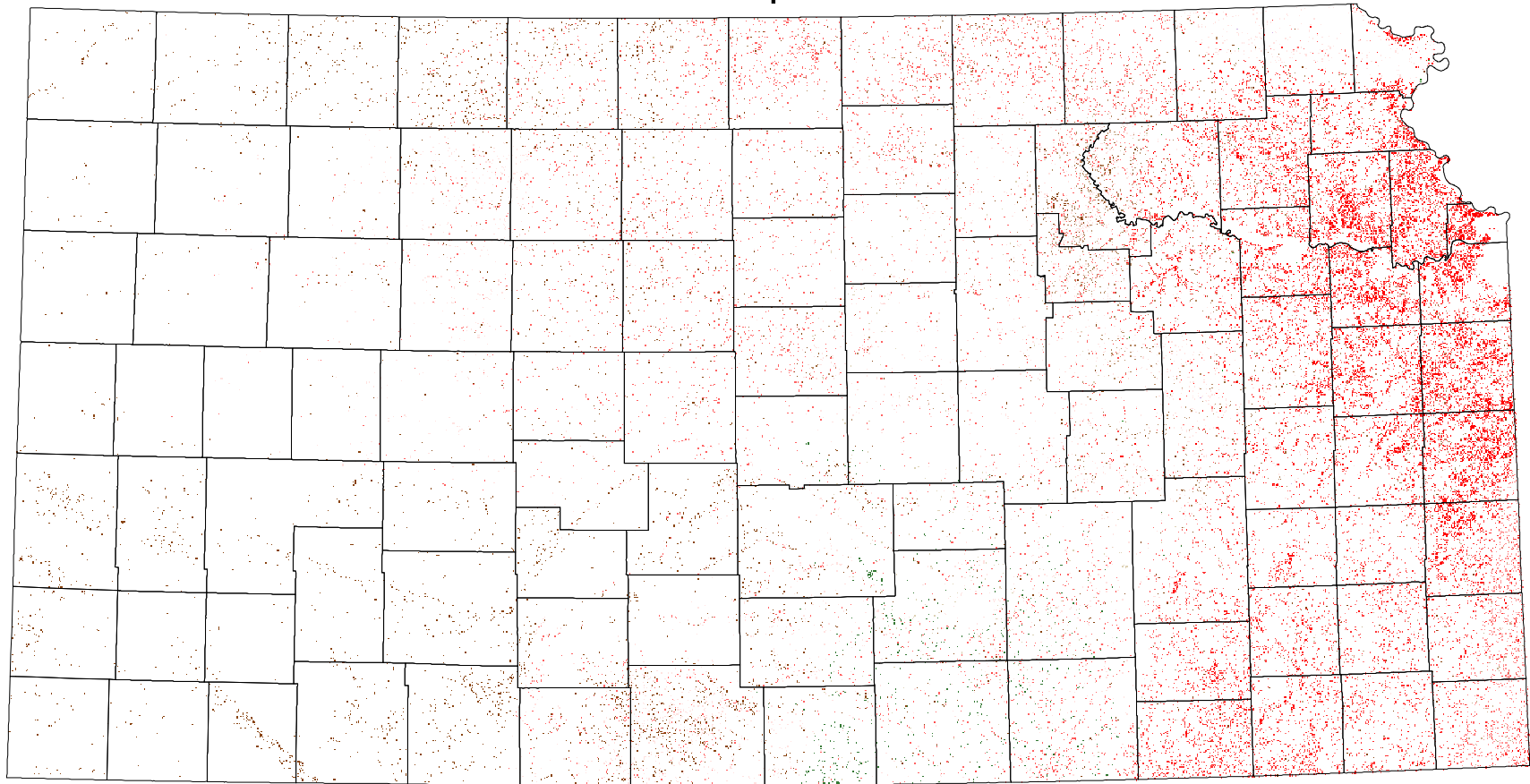
 Breeding Bird Survey

 Birds of Kansas,
Horned Lark

 Range from Johnsgard, 1888
The Birds of Nebraska

All shaded counties will be included in the distribution of the species.

Field Sparrow



* 30 m edge

** 30 m edge adjacent to forests or woodlands