

Habitat Model for Species: Common Yellowthroat

Alpha Code: COYE Status: Breeding

[Distribution Map](#)

[Habitat Map](#)

Landcover Category

0 - Comments

Frawley and Best, 1991

Basore et al., 1986

Zimmerman and Tatschl, 1975

Kahl et al., 1985

[KS GAP]

30 m edge of selected forests and woodlands (2,4-9,11,50,51)
adjacent to selected grasslands (17,18,22) or wetlands
(30-33,70,82).

[Reviewer]

[Reviewer2]

Habitat Restrictions

Comments

Attempted to breed in first crop alfalfa only.

Territories included grassed waterways.

Nested in strip cover of cultivated fields.

common in old fields.

Flowers: historic breeding, Meade County. See
Flowers 1995 and Hibbard and Rinker 1945 who
found a "western yellow-throat warbler" in Meade:
"banding of recently fledged young in the fall at

Busby: Geary County KBBAT record most likely from
Riley County (Konza Prairie). Block extends into Riley
and includes Konza Prairie.

02 - Oak-Hickory Forest

Kroodsmas, 1984

shrubby edge

[KS GAP]

Map 30 m edge next to grassland or wetland/water.

powerline corridor

04 - Pecan Floodplain Forest

Stewart, 1953

herbaceous and woody plants along the edge of stream, ponds,
and lakes.

Bent, 1953

[KS GAP]

Map 30 m edge next to grassland or wetland/water.

05 - Ash-Elm-Hackberry

Floodplain Forest

Stauffer and Best, 1980

Stauffer and Best, 1986

Stewart, 1953

herbaceous and woody plants along the edge of stream, ponds,
and lakes.

Faanes, 1987

Faanes, 1984

Bent, 1953

[KS GAP]

Map 30 m edge next to grassland or wetland/water.

06 - Cottonwood Floodplain

Forest

Stewart, 1975

wood borders of ponds, lakes, and streams.

Stewart, 1953

herbaceous and woody plants along the edge of stream, ponds,
and lakes.

Bent, 1953

Zimmerman and Tatschl, 1975

Kahl et al., 1985

[KS GAP]

Map 30 m edge next to grassland or wetland/water.

07 - Mixed Oak Floodplain

Stewart, 1953

herbaceous and woody plants along the edge of stream, ponds,
and lakes.

Gray, 1993

Gray, 1989

[KS GAP]

Map 30 m edge next to grassland or wetland/water.

found in shrub layer adjacent to prairie

found on border of gallery forest/shrub communities
adjacent to prairie

08 - Bur Oak Floodplain

Woodland

Bent, 1953

Gray, 1993

Gray, 1989

[KS GAP]

Map 30 m edge next to grassland or wetland/water.

found in shrub layer adjacent to prairie

found on border of gallery forest/shrub communities
adjacent to prairie

09 - Mixed Oak Ravine

Bent, 1953
Gray, 1993
Gray, 1989

found in shrub layer adjacent to prairie
found on border of gallery forest/shrub communities
adjacent to prairie

[KS GAP] Map 30 m edge next to grassland or wetland/water.

11 - Cottonwood Floodplain

Woodland

Stewart, 1975 wood borders of ponds, lakes, and streams.
Stewart, 1953 herbaceous and woody plants along the edge of stream, ponds,
and lakes.

Dinsmore et al., 1984
Bent, 1953
Sedgwick and Knopf, 1987

found in areas of high vegetation density and shrub
cover.

[KS GAP] Map 30 m edge next to grassland or wetland/water.

14 - Willow Shrubland

Stewart, 1975 wood borders of ponds, lakes, and streams.
Stewart, 1953 herbaceous and woody plants along the edge of stream, ponds,
and lakes.

Dinsmore et al., 1984
Bent, 1953

15 - Buttonbush (Swamp)

Shrubland

Bent, 1953

17 - Tallgrass Prairie

Herkert, 1994
Kahl et al., 1985
Zimmerman, 1993 restricted to grassland drainages, swales, and seeps at sites
where the soil remains moist.

Wiens, 1985
Cink and Lowther, 1989
Gray, 1989

18 - Sand Prairie

Platt, 1975

increasing possibly in response to increased shrubby
habitat.

22 - Mixed Prairie

Renken and Dinsmore, 1987 with invasion of shrubs.
Higgins et al., 1984
Madden et al., 1999

newly sown
reached highest abundance on unburned prairie.

30 - Low or Wet Prairie

Delphey and Dinsmore, 1993
Dinsmore et al., 1984
Platt, 1975

increasing possibly in response to increased shrubby
habitat.
borders of marshes

Bent, 1953
Cink and Lowther, 1989

31 - Freshwater Marsh

Delphey and Dinsmore, 1993
Weller and Spatcher, 1965
Bent, 1953
[KS GAP]

Map 30 m edge.

borders of marshes

32 - Bulrush Marsh

Delphey and Dinsmore, 1993
Bent, 1953
[KS GAP]

Map 30 m edge.

borders of marshes

33 - Cattail Marsh

Delphey and Dinsmore, 1993
Weller and Spatcher, 1965
Bent, 1953
[KS GAP]

Map 30 m edge.

borders of marshes

35 - Acid seep - not mapped

Stewart, 1953

Bent, 1953

Zimmerman, 1993 restricted to grassland drainages, swales, and seeps at sites where the soil remains moist.

borders of marshes

35 - Neutral seep - not mapped

Stewart, 1953

Bent, 1953

Zimmerman, 1993 restricted to grassland drainages, swales, and seeps at sites where the soil remains moist.

borders of marshes

36 - Cottonwood Savanna - not mapped

Stewart, 1953 herbaceous and woody plants along the edge of stream, ponds, and lakes.

Bent, 1953

40 - Non-native Grassland

Stauffer and Best, 1980

Bryan and Best, 1991

Herkert, 1994

nesting in waterways

41 - CRP

Johnson and Schwartz, 1993

Patterson and Best, 1996

Johnson and Igl, 1995

Koford, 1999

adjacent to sparsely wooded fencerows

42 - Salt Cedar or Tamarisk Shrubland

Brown and Trosset, 1989

50 - Deciduous Forest-Mined

Land

Stewart, 1975 wood borders of ponds, lakes, and streams.
[KS GAP] Map 30 m edge next to grassland or wetland/water.

51 - Maple Floodplain Forest

Stauffer and Best, 1980

Stauffer and Best, 1986

Stewart, 1975

wood borders of ponds, lakes, and streams.

Stewart, 1953 herbaceous and woody plants along the edge of stream, ponds, and lakes.

[KS GAP] Map 30 m edge next to grassland or wetland/water.

70 - Weedy Marsh

Delphey and Dinsmore, 1993

Weller and Spatcher, 1965

Bent, 1953

[KS GAP]

Map 30 m edge.

prairie potholes

borders of marshes, lakes, swamps, and streams

71 - Weedy Upland

Zimmerman and Tatschl, 1975

92 - Ozark Limestone Glade - not mapped

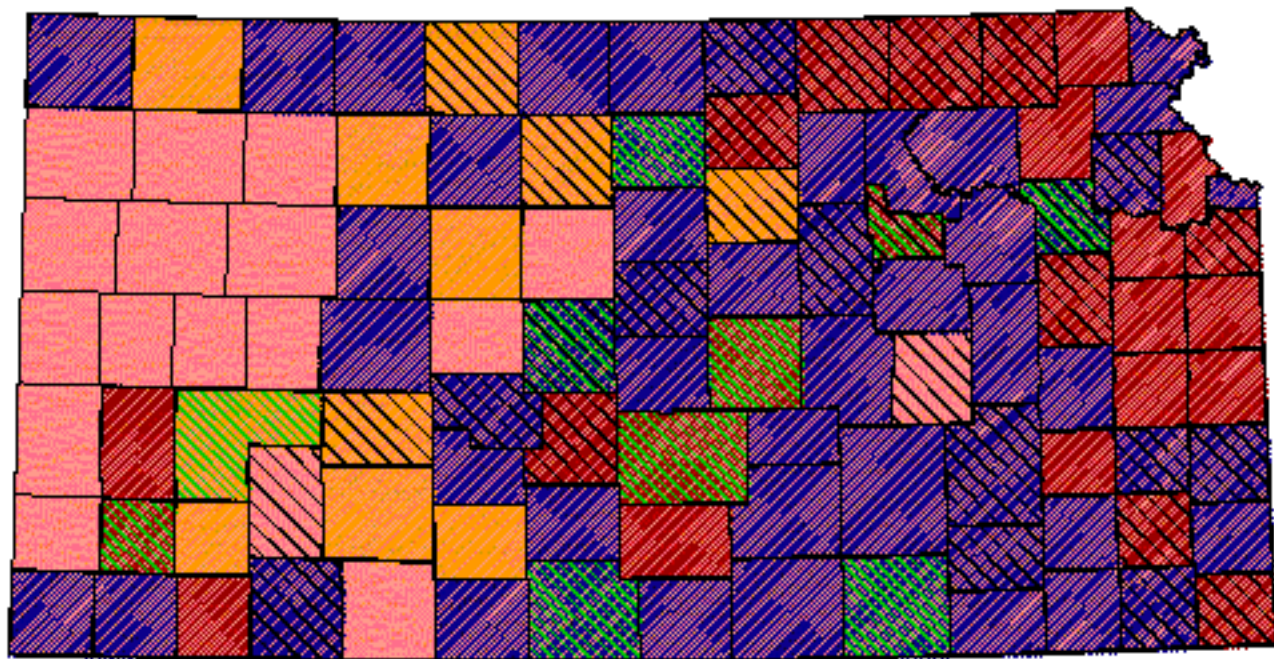
Renken and Dinsmore, 1987 with invasion of shrubs.

Reference List

1. Basore, N. S., L. B. Best, and J. B. Wooley, Jr. 1986. Bird nesting in Iowa no-tillage and tilled cropland. *Journal of Wildlife Management* 50(1):19-28.
2. Bent, A. C. 1953. Life histories of North American wood warblers. *Kentucky Warbler*. United States Government Printing Office, Washington, D.C., USA.
3. Brown, B. T. and M. W. Trosset. 1989. Nesting-habitat relationships of riparian birds along the Colorado River in Grand Canyon, Arizona. *Southwestern Naturalist* 34(2):260-270.
4. Bryan, G. G. and L. B. Best. 1991. Bird abundance and species richness in grassed waterways in Iowa rowcrop fields. *American Midland Naturalist* 126:90-102.

5. Cink, C. L. and P. E. Lowther. 1989. Breeding bird populations of a floodplain tallgrass prairie in Kansas. Pages 259-262 in T. B. Bragg and J. Stubbendieck, editors. *Prairie Pioneers: Ecology, History and Culture*. Proceedings of the Eleventh North American Prairie Conference.
6. Delphey, P. J. and J. J. Dinsmore. 1993. Breeding bird communities of recently restored and natural prairie potholes. *Wetlands* 13(3):200-206.
7. Dinsmore, J. J., K. H. Thomas, D. Koenig, C. P. Petersen, and M. D. Roosa. 1984. *Iowa Birds*. Iowa State University Press, Ames, Iowa, USA.
8. Faanes, C. A. 1984. Wooded islands in a sea of prairie. *American Birds* 38(1):3-6.
9. _____. 1987. Breeding birds and vegetation structure in western North Dakota wooded draws. *Prairie Naturalist* 19(4):209-220.
10. Frawley, B. J. and L. B. Best. 1991. Effects of mowing on breeding bird abundance and species composition in alfalfa fields. *Wildlife Society Bulletin* 19:135-142.
11. Gray, L. J. 1989. Correlation between insects and birds in tallgrass prairie riparian habitats. Pages 263-265 in T. B. Bragg and J. Stubbendieck, editors. *Proceedings of the Eleventh North American Prairie Conference*. University of Nebraska Printing, Lincoln, Nebraska, USA.
12. _____. 1993. Response of insectivorous birds to emerging aquatic insects in riparian habitats of a tallgrass prairie stream. *American Midland Naturalist* 129:288-300.
13. Herkert, J. R. 1994. The effects of habitat fragmentation on Midwestern grassland bird communities. *Ecological Applications* 4(3):461-471.
14. Higgins, K. F., T. W. Arnold, and R. M. Barta. 1984. Breeding bird community colonization of sown stands of native grasses in North Dakota. *Prairie Naturalist* 16(4):177-182.
15. Johnson, D. H. and L. D. Igl. 1995. Contributions of the Conservation Reserve Program to populations of breeding birds in North Dakota. *Wilson Bulletin* 107(4):709-718.
16. Johnson, D. H. and M. D. Schwartz. 1993. The Conservation Reserve Program: habitat for grassland birds. *Great Plains Research* 3(August):273-295.
17. Kahl, R. B., T. S. Baskett, J. A. Ellis, and J. N. Burroughs. 1985. Characteristics of summer habitats of selected nongame birds in Missouri. *University of Missouri Agriculture Experiment Station Research Bulletin* 1056. University of Missouri, Columbia, Missouri, USA.
18. Koford, R. R. 1999. Density and fledging success of grassland birds in Conservation Reserve Program fields in North Dakota and west-central Minnesota. *Studies in Avian Biology* 19:187-195.
19. Kroodsmma, R. L. 1984. Ecological factors associated with degree of edge effect in breeding birds. *Journal of Wildlife Management* 48(2):418-425.
20. Madden, E. M., A. J. Hansen, and R. K. Murphy. 1999. Influence of prescribed fire history on habitat and abundance of passerine birds in northern mixed-grass prairie. *Canadian Field-Naturalist* 113(4):627-640.
21. Patterson, M. P. and L. B. Best. 1996. Bird abundance and nesting success in Iowa CRP fields: The importance of vegetation structure and composition. *American Midland Naturalist* 135:135-167.
22. Platt, D. R. 1975. Breeding birds of Sand Prairie Natural History Reservation, Harvey County, Kansas. *American Birds* 29(6):1146-1151.
23. Renken, R. B. and J. J. Dinsmore. 1987. Nongame bird communities on managed grasslands in North Dakota. *Canadian Field-Naturalist* 101(4):551-557.
24. Sedgwick, J. A. and F. L. Knopf. 1987. Breeding bird response to cattle grazing of a cottonwood bottomland. *Journal of Wildlife Management* 51(1):230-237.
25. Stauffer, D. F. and L. B. Best. 1980. Habitat selection by birds of riparian communities: evaluating effects of habitat alterations. *Journal of Wildlife Management* 44(1):1-15.
26. _____. 1986. Nest-site characteristics of open-nesting birds in riparian habitats in Iowa. *Wilson Bulletin* 98(2):231-242.
27. Stewart, R. E. 1953. A life history study of the Yellow-throat. *Wilson Bulletin* 65(1):99-?
28. _____. 1975. *Breeding birds of North Dakota*. Harrison Smith, Lund Press, Minneapolis, Minnesota, USA.
29. Weller, M. W. and C. S. Spatcher. 1965. Role of habitat in the distribution and abundance of marsh birds. *Special Report* 43. Agricultural and Home Economics Experiment Station. Iowa State College, Ames, Iowa, USA.
30. Wiens, J. A. 1985. Habitat selection in variable environments: shrub-steppe birds. Pages 191-226 in M. L. Cody, editor. *Habitat selection in birds*. Academic Press, Orlando, Florida, USA.
31. Zimmerman, J. L. 1993. *The Birds of Konza*. University Press of Kansas, Lawrence, Kansas, USA.
32. Zimmerman, J. L. and J. L. Tatschl. 1975. Floodplain birds of Weston Bend, Missouri River. *Wilson Bulletin* 87(2):196-208.

Common Yellowthroat




Kansas Breeding Bird Atlas

 Confirmed Breeding

 Probable Breeding

 Possible Breeding

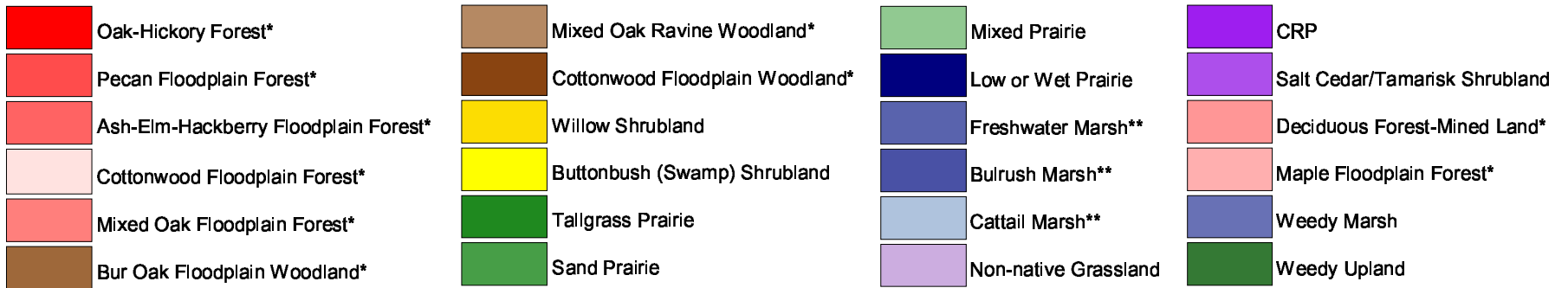
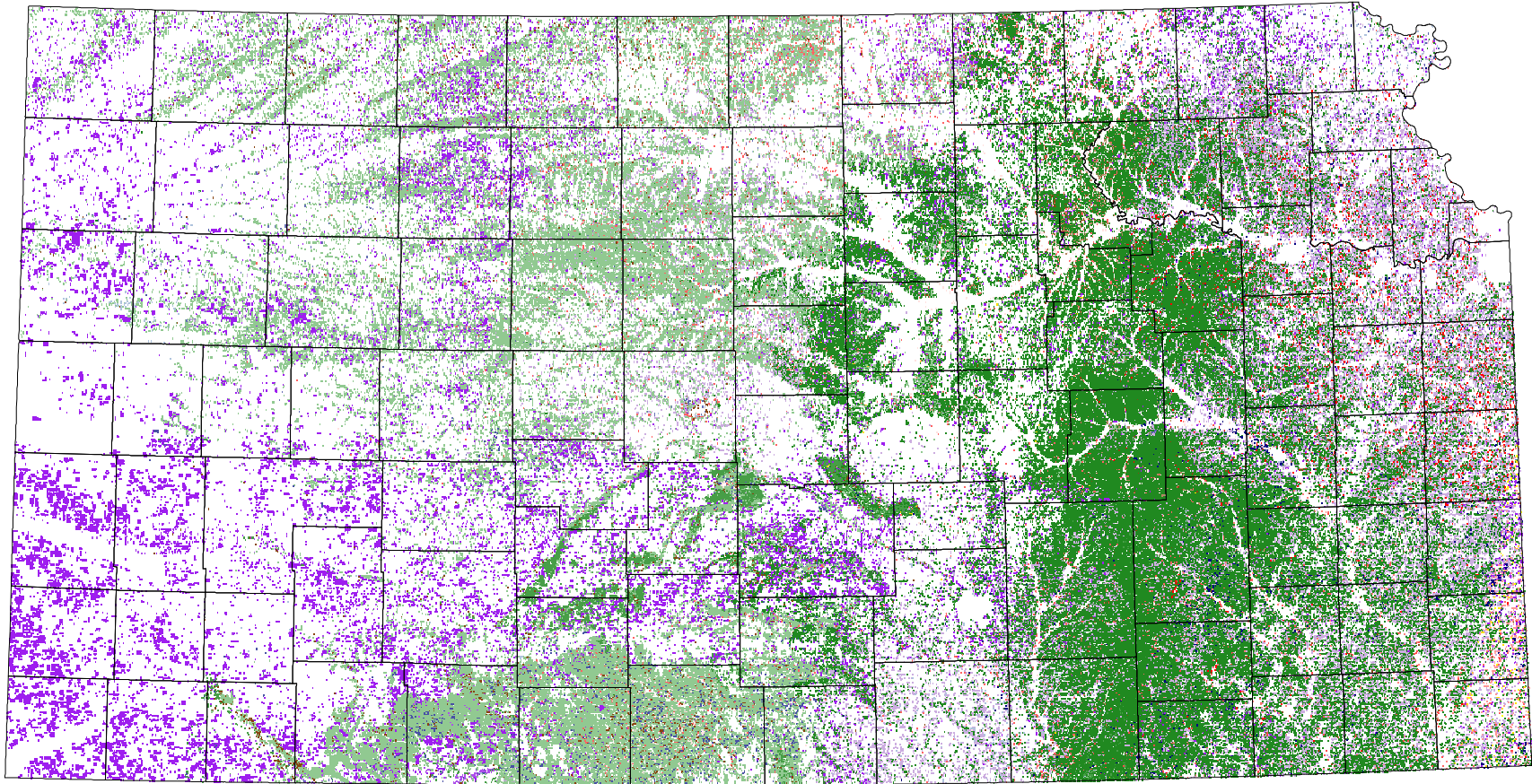
 Breeding Bird Survey

 Birds of Kansas,
Horned Lark

 Range from Johnsgard, 1888
The Birds of Nebraska

All shaded counties will be included in the distribution of the species.

Common Yellowthroat



* 30 m edge adjacent to mapped grassland, wetland or water

** 30 m edge