

Habitat Model for Species: Chipping Sparrow

Alpha Code: CHSP Status: Breeding

[Distribution Map](#)

[Habitat Map](#)

Landcover Category

0 - Comments

Johnson and Schwartz, 1993
Yahner, 1982

Klute and Robel, 1997

Rankin, 1938

[KS GAP]

Map 30 m edge of all forest and woodland (1-11, 50-52, 55) and salt cedar next to open habitats. Map all weedy upland (71) and urban areas (81).

Habitat Restrictions

Comments

Found nested in small numbers in CRP.
Nested almost exclusively in conifers in farmstead shelterbelts.

Found nested in very small numbers in CRP.
Prefers burned over areas.

01 - Maple-Basswood Forest

Stewart, 1975

Middleton, 1998

Manes, 1984

Rankin, 1938

[KS GAP]

along margins

forest edge

forest edges

30 m edge.

02 - Oak-Hickory Forest

Stewart, 1975

Middleton, 1998

Manes, 1984

Rankin, 1938

[KS GAP]

along margins

forest edge

forest edges

30 m edge.

03 - Post Oak-Blackjack Oak Forest

Stewart, 1975

Middleton, 1998

Manes, 1984

Rankin, 1938

[KS GAP]

along margins

forest edge

forest edges

30 m edge.

04 - Pecan Floodplain Forest

Stewart, 1975

Rankin, 1938

[KS GAP]

along margins

forest edges

30 m edge.

05 - Ash-Elm-Hackberry Floodplain Forest

Faanes, 1987

Faanes, 1984

Stewart, 1975

Rankin, 1938

[KS GAP]

edge

nesting in wooded draw

along margins

forest edges

30 m edge.

06 - Cottonwood Floodplain Forest

Stewart, 1975

Bent, 1968

Rankin, 1938

[KS GAP]

along margins

Resident on edges.

forest edges

30 m edge.

07 - Mixed Oak Floodplain

Stewart, 1975

Rankin, 1938

[KS GAP]

along margins

forest edges

30 m edge.

08 - Bur Oak Floodplain

Woodland

Stewart, 1975 along margins
Middleton, 1998 Prefers open woodlands.
Manes, 1984
Rankin, 1938 open woodland
[KS GAP] 30 m edge.

09 - Mixed Oak Ravine

Stewart, 1975 along margins
Middleton, 1998 Prefers open woodlands.
Manes, 1984
Rankin, 1938 open woodland
[KS GAP] 30 m edge.

10 - Post Oak-Blackjack Oak

Woodland

Stewart, 1975 along margins
Middleton, 1998 Prefers open woodlands.
Manes, 1984
Rankin, 1938 open woodland
[KS GAP] 30 m edge.

11 - Cottonwood Floodplain

Woodland

Faanes, 1984 nesting in wooded draw
Stewart, 1975 along margins
Middleton, 1998 Prefers open woodlands.
Bent, 1968 Resident on edges.
Rankin, 1938 open woodland
[KS GAP] 30 m edge.

36 - Cottonwood Savanna - not mapped

Bent, 1968 Resident on edges.
[KS GAP] 30 m edge.

42 - Salt Cedar or Tamarisk

Shrubland

Robbins and Easterla, 1992
Middleton, 1998 Prefers open woodlands.
Manes, 1984
Bent, 1968 Resident on edges.
Rankin, 1938 open woodland
[KS GAP] 30 m edge.

50 - Deciduous Forest-Mined

Land

Stewart, 1975 along margins
Middleton, 1998 forest edge
Manes, 1984
Bent, 1968 Resident on edges.
Rankin, 1938 forest edges
[KS GAP] 30 m edge.

51 - Maple Floodplain Forest

Stewart, 1975 along margins
Rankin, 1938 forest edges
[KS GAP] 30 m edge.

52 - Evergreen

Forest-Disturbed Land

Robbins and Easterla, 1992	
Middleton, 1998	forest edge
Manes, 1984	
Bent, 1968	Resident on edges.
Rankin, 1938	forest edges
[KS GAP]	30 m edge.

55 - Deciduous Woodland

Stewart, 1975	along margins
Middleton, 1998	Prefers open woodlands.
Manes, 1984	
Rankin, 1938	open woodland
[KS GAP]	30 m edge.

71 - Weedy Upland

Middleton, 1998	brushy, weedy fields.
-----------------	-----------------------

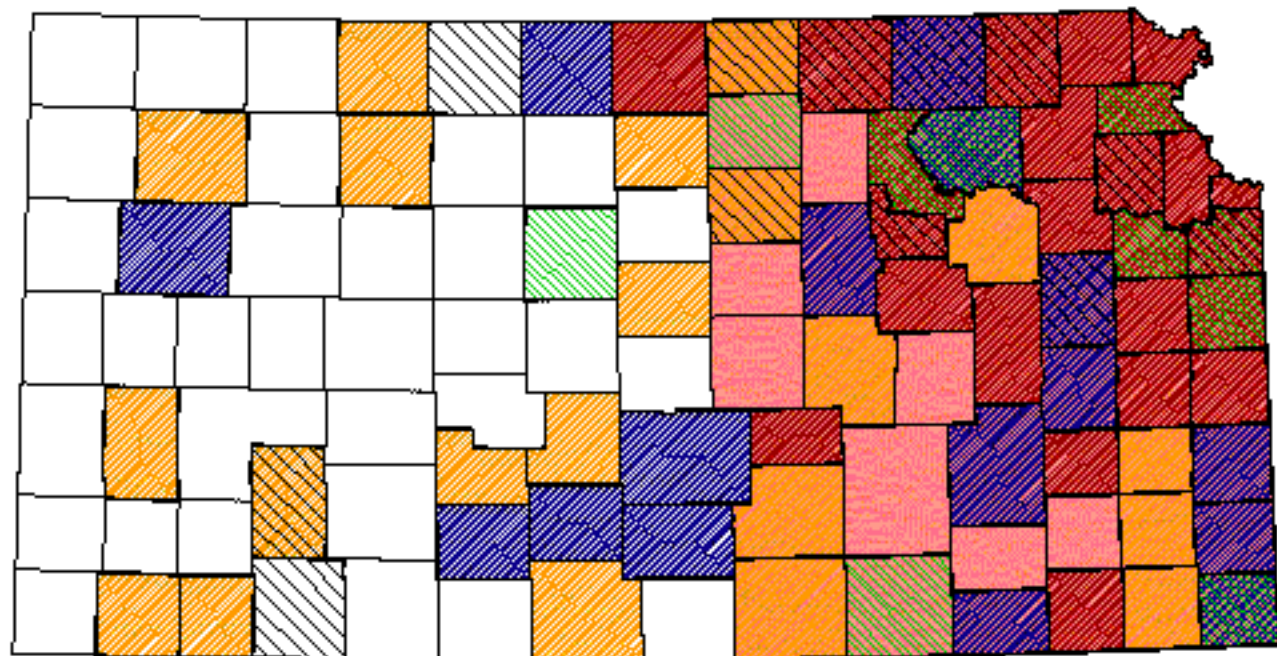
81 - Urban Areas

Stewart, 1975	wooded lawns, parks, landscaped areas of towns, suburbs, farmsteads
Dinsmore et al., 1984	Open, grassy woodland, ornamental shrubs and conifers in urban parks, and residential areas.
Baylor and Baylor, 1986	Nesting in ornamental <i>Abies concolor</i> by a living-room window.
Buech, 1982	Nesting in <i>Pinus sylvestris</i> Christmas tree plantation.
Robbins and Easterla, 1992	Common in residential areas.
Middleton, 1998	Common in towns and gardens.
Manes, 1984	frequent lawns
Rankin, 1938	Prefers to be near human habitations. Dooryard garden, cemeteries.







Reference List

1. Baylor, L. M. and M. E. Baylor. 1986. Observations of nesting Chipping Sparrows. *South Dakota Bird Notes* 38(4):96-97.
2. Bent, A. C. 1968. Life histories of North American cardinals, grosbeaks, buntings, towhees, finches, sparrows, and allies. L. A. Oliver, Jr., editor. *United States National Museum Bulletin*. No. 237.
3. Buech, R. R. 1982. Nesting ecology and Cowbird parasitism of Clay-colored, Chipping, and Field Sparrows in a Christmas tree plantation. *Journal of Field Ornithology* 53(4):363-369.
4. Dinsmore, J. J., K. H. Thomas, D. Koenig, C. P. Petersen, and M. D. Roosa. 1984. *Iowa Birds*. Iowa State University Press, Ames, Iowa, USA.
5. Faanes, C. A. 1984. Wooded islands in a sea of prairie. *American Birds* 38(1):3-6.
6. _____. 1987. Breeding birds and vegetation structure in western North Dakota wooded draws. *Prairie Naturalist* 19(4):209-220.
7. Johnson, D. H. and M. D. Schwartz. 1993. The Conservation Reserve Program: habitat for grassland birds. *Great Plains Research* 3(August):273-295.
8. Klute, D. S. and R. J. Robel. 1997. Will conversion of Conservation Reserve Program (CRP) lands to pasture be detrimental for grassland birds in Kansas? *American Midland Naturalist* 137:206-212.
9. Manes, R. 1984. Sparrows: the plain vanilla birds. *Kansas Wildlife* 41(1):4-5.
10. Middleton, A. L. A. 1998. Chipping Sparrow. A. Poole and F. Gill, editors. *The Birds of North America*. No. 334. The Birds of North America, Inc., Philadelphia, Pennsylvania, USA.
11. Rankin, W. H. 1938. The life history and distribution of the Chipping Sparrow *Spizella passerina passerina* (Bech.). Thesis, Cornell University, Cornell, New York, USA.
12. Robbins, M. B. and D. A. Easterla. 1992. *Birds of Missouri*. University of Missouri Press, Columbia, Missouri, USA.
13. Stewart, R. E. 1975. *Breeding birds of North Dakota*. Harrison Smith, Lund Press, Minneapolis, Minnesota, USA.
14. Yahner, R. H. 1982. Avian nest densities and nest-site selection in farmstead shelterbelts. *Wilson Bulletin* 94(2):156-175.

Chipping Sparrow



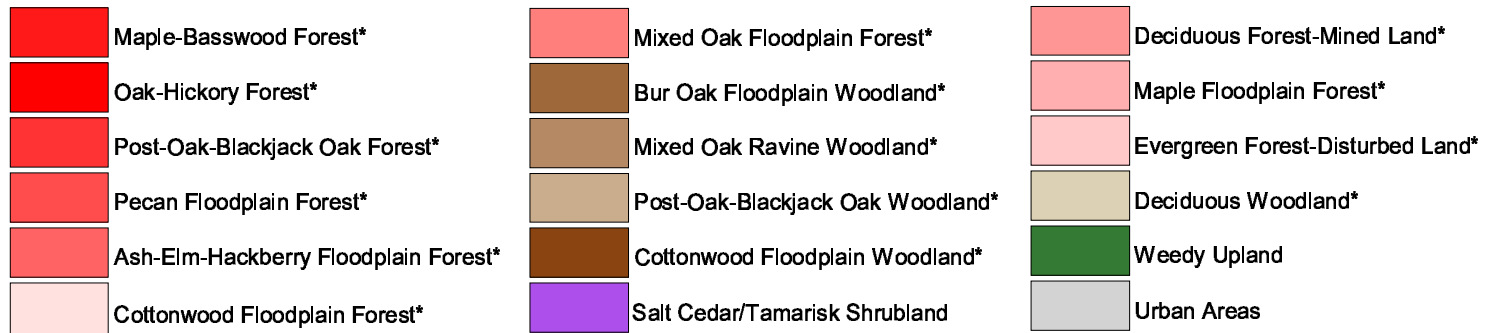
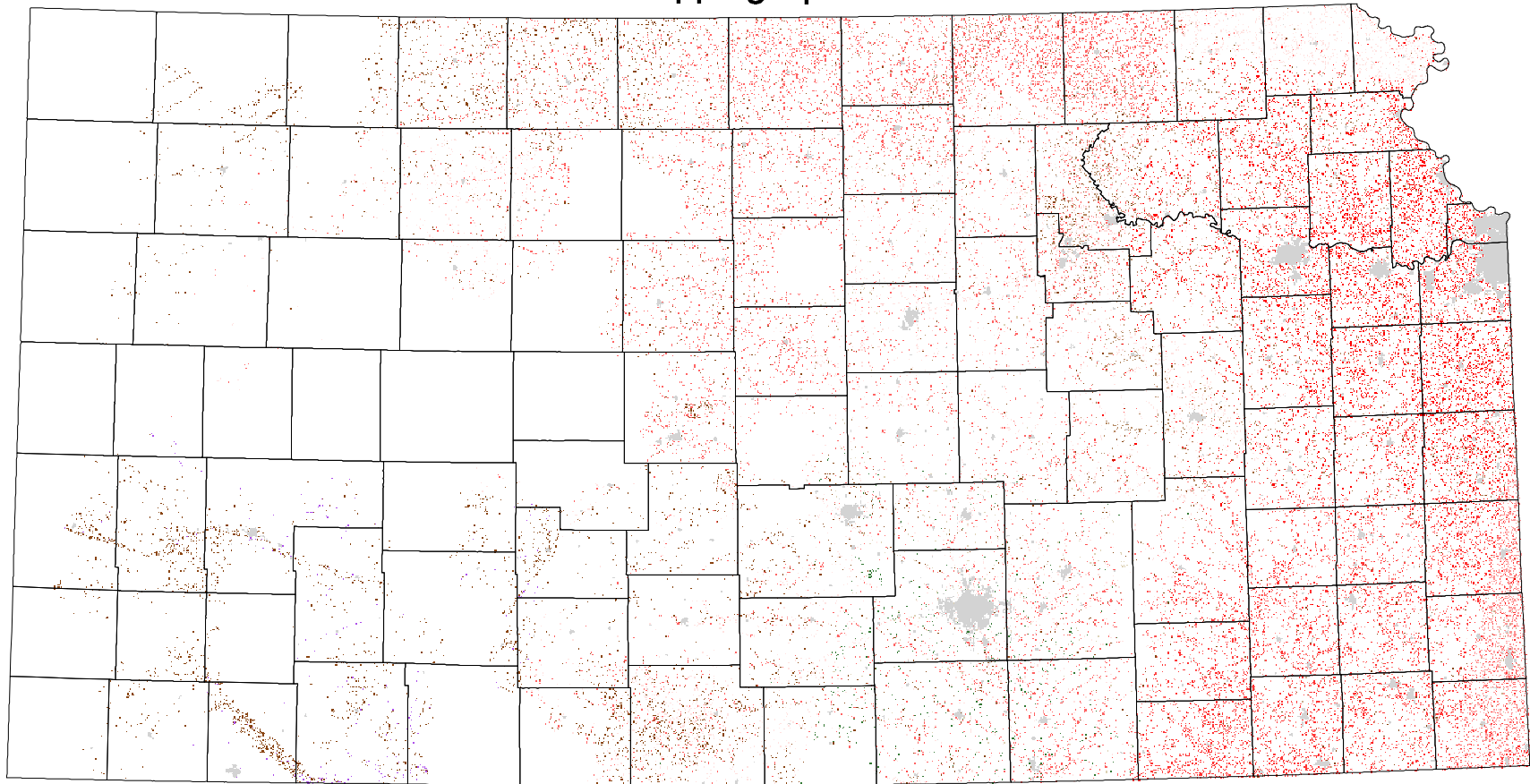
Kansas Breeding Bird Atlas

- | | | |
|--|---|--|
|  Confirmed Breeding |  Breeding Bird Survey |  Range from Johnsgard, 1998
<i>The Birds of Nebraska</i> |
|  Probable Breeding |  <i>Birds of Kansas,</i>
<i>Horned Lark</i> | |
|  Possible Breeding | | |

Habitat

All shaded counties will be included in the possible distribution of the species.

Chipping Sparrow



* 30 m edge