

Habitat Model for Species: Blue Grosbeak

Alpha Code: BGBK Status: Breeding

[Distribution Map](#)

[Habitat Map](#)

Landcover Category

0 - Comments

Stabler, 1959

Melcher and Giesen, 1996
Johnsgard, 1998
Thompson and Ely, 1992

Ingold, 1993
[KS GAP]

Habitat Restrictions

Map 30 m edge of all listed habitats.

Comments

Brushy disturbed area. Nest located in skunkbush (Rhus trilobata) and wolfberry (Symphoricarpos occidentalis).
shelterbelt
hedgerows
Breeds in riparian woodland, shelterbelts, cities, and scrub woodland.
hedgerows

01 - Maple-Basswood Forest

Johnsgard, 1998 forest edge
Ingold, 1993 forest edge
[KS GAP] 30 m edge.

02 - Oak-Hickory Forest

Johnsgard, 1998 forest edge
Ingold, 1993 forest edge
[KS GAP] 30 m edge.

03 - Post Oak-Blackjack Oak Forest

Johnsgard, 1998 forest edge
Ingold, 1993 forest edge
[KS GAP] 30 m edge.

04 - Pecan Floodplain Forest

Johnsgard, 1998 forest edge
Ingold, 1993 forest edge
[KS GAP] 30 m edge.

05 - Ash-Elm-Hackberry Floodplain Forest

Johnsgard, 1998 forest edge
Ingold, 1993 forest edge
[KS GAP] 30 m edge.

06 - Cottonwood Floodplain Forest

Johnsgard, 1998 forest edge
Kahl et al., 1985 edge or open forest
Ingold, 1993 forest edge
[KS GAP] 30 m edge.

07 - Mixed Oak Floodplain

Johnsgard, 1998 forest edge
Ingold, 1993 forest edge
[KS GAP] 30 m edge.

08 - Bur Oak Floodplain Woodland

Johnsgard, 1998 forest edge
Thompson and Ely, 1992 riparian woodland
Kahl et al., 1985 edge or open forest
Ingold, 1993 forest edge
[KS GAP] 30 m edge.

09 - Mixed Oak Ravine

Johnsgard, 1998 forest edge
Thompson and Ely, 1992 riparian woodland
Ingold, 1993 forest edge
[KS GAP] 30 m edge.

10 - Post Oak-Blackjack Oak

Woodland

Johnsgard, 1998	forest edge	
Thompson and Ely, 1992		scrub woodland
Ingold, 1993	forest edge	
[KS GAP]	30 m edge.	

11 - Cottonwood Floodplain

Woodland

Wiens, 1963		
Johnsgard, 1998	forest edge	
Thompson and Ely, 1992		riparian woodland
Ingold, 1993	forest edge	
[KS GAP]	30 m edge.	

14 - Willow Shrubland

Johnsgard, 1998	forest edge	streamside thickets
Thompson and Ely, 1992		riparian woodland
[KS GAP]	30 m edge.	

42 - Salt Cedar or Tamarisk

Shrubland

Brown and Trosset, 1989		
Ingold, 1993		
[KS GAP]	30 m edge.	

50 - Deciduous Forest-Mined

Land

Johnsgard, 1998	forest edge	
Ingold, 1993	forest edge	
[KS GAP]	30 m edge.	

51 - Maple Floodplain Forest

Johnsgard, 1998	forest edge	
Ingold, 1993	forest edge	
[KS GAP]	30 m edge.	

55 - Deciduous Woodland

Johnsgard, 1998	forest edge	
Thompson and Ely, 1992		riparian woodland
Ingold, 1993	forest edge	
[KS GAP]	30 m edge.	

71 - Weedy Upland

Johnsgard, 1998		weedy pastures and old fields
Ingold, 1993	forest edge	
[KS GAP]	30 m edge.	

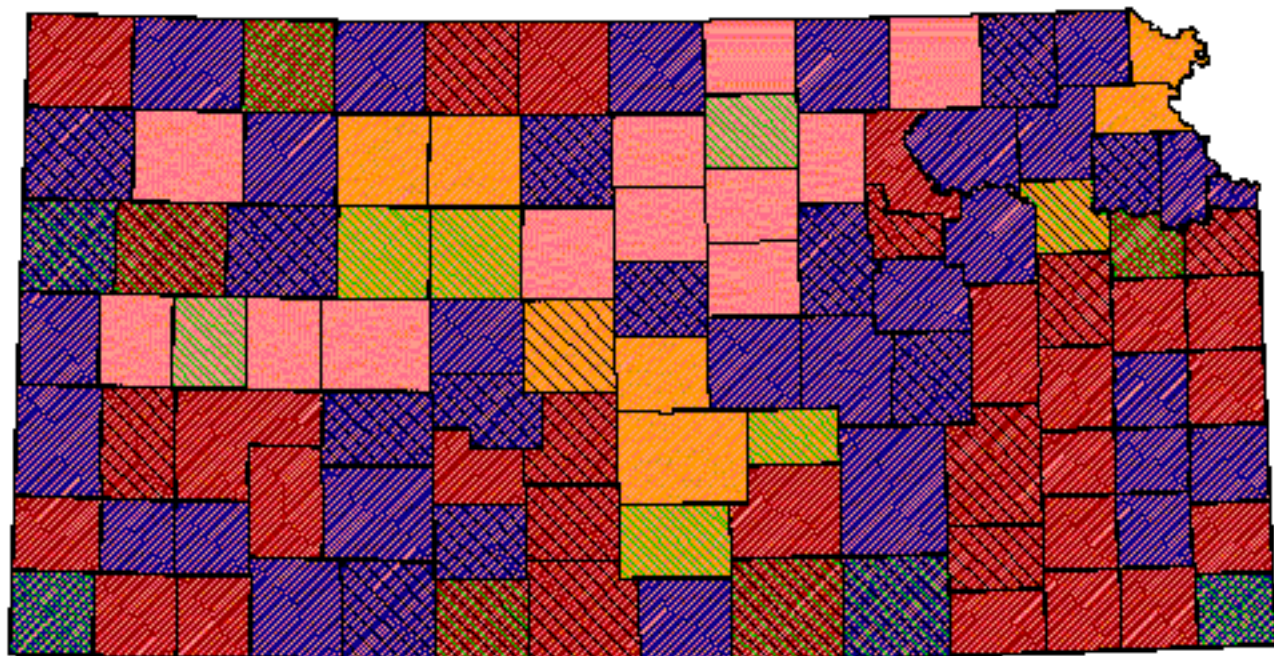
81 - Urban Areas

Thompson and Ely, 1992

Reference List

1. Brown, B. T. and M. W. Trosset. 1989. Nesting-habitat relationships of riparian birds along the Colorado River in Grand Canyon, Arizona. *Southwestern Naturalist* 34(2):260-270.
2. Ingold, J. L. 1993. Blue Grosbeak. A. Poole and F. Gill, editors. *The Birds of North America*. No. 79. The American Ornithologists' Union and The Academy of Natural Sciences, Philadelphia, Pennsylvania, USA.
3. Johnsgard, P. A. 1998. *The Birds of Nebraska*. University of Nebraska-Lincoln, (available from author).
4. Kahl, R. B., T. S. Baskett, J. A. Ellis, and J. N. Burroughs. 1985. Characteristics of summer habitats of selected nongame birds in Missouri. University of Missouri Agriculture Experiment Station Research Bulletin 1056. University of Missouri, Columbia, Missouri, USA.
5. Melcher, C. and K. Giesen. 1996. Blue Grosbeaks: a response to habitat changes and a late nesting record. *Colorado Field Ornithologists Journal* 30(4):158-161.
6. Stabler, R. M. 1959. Nesting of the Blue Grosbeak in Colorado. *Condor* 61:46-48.
7. Thompson, M. C. and C. Ely. 1992. *Birds in Kansas: Volume II*. Public Education Series No. 12. University of Kansas Museum of Natural History, University Press of Kansas, Lawrence, Kansas, USA.
8. Wiens, J. A. 1963. Aspects of cowbird parasitism in southern Oklahoma. *Wilson Bulletin* 75(2):130-139.

Blue Grosbeak



Kansas Breeding Bird Atlas

Confirmed Breeding

Probable Breeding

Possible Breeding

Breeding Bird Survey

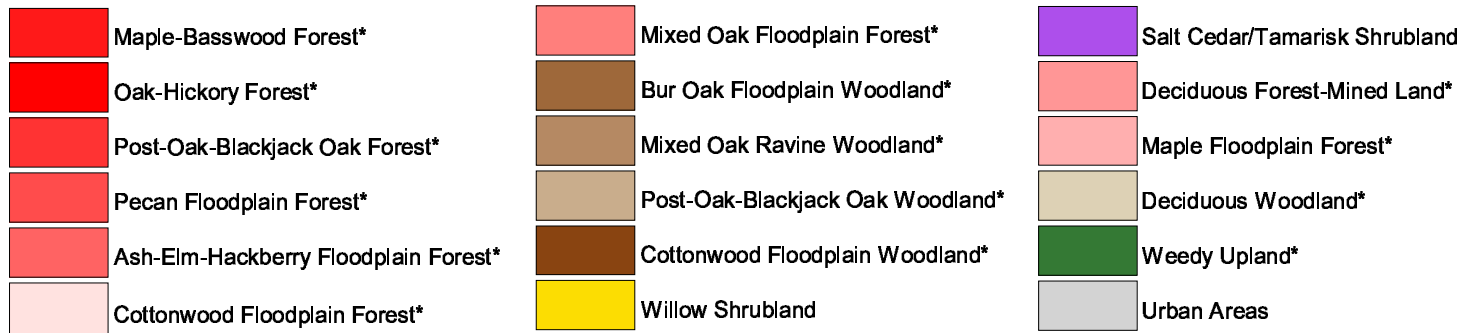
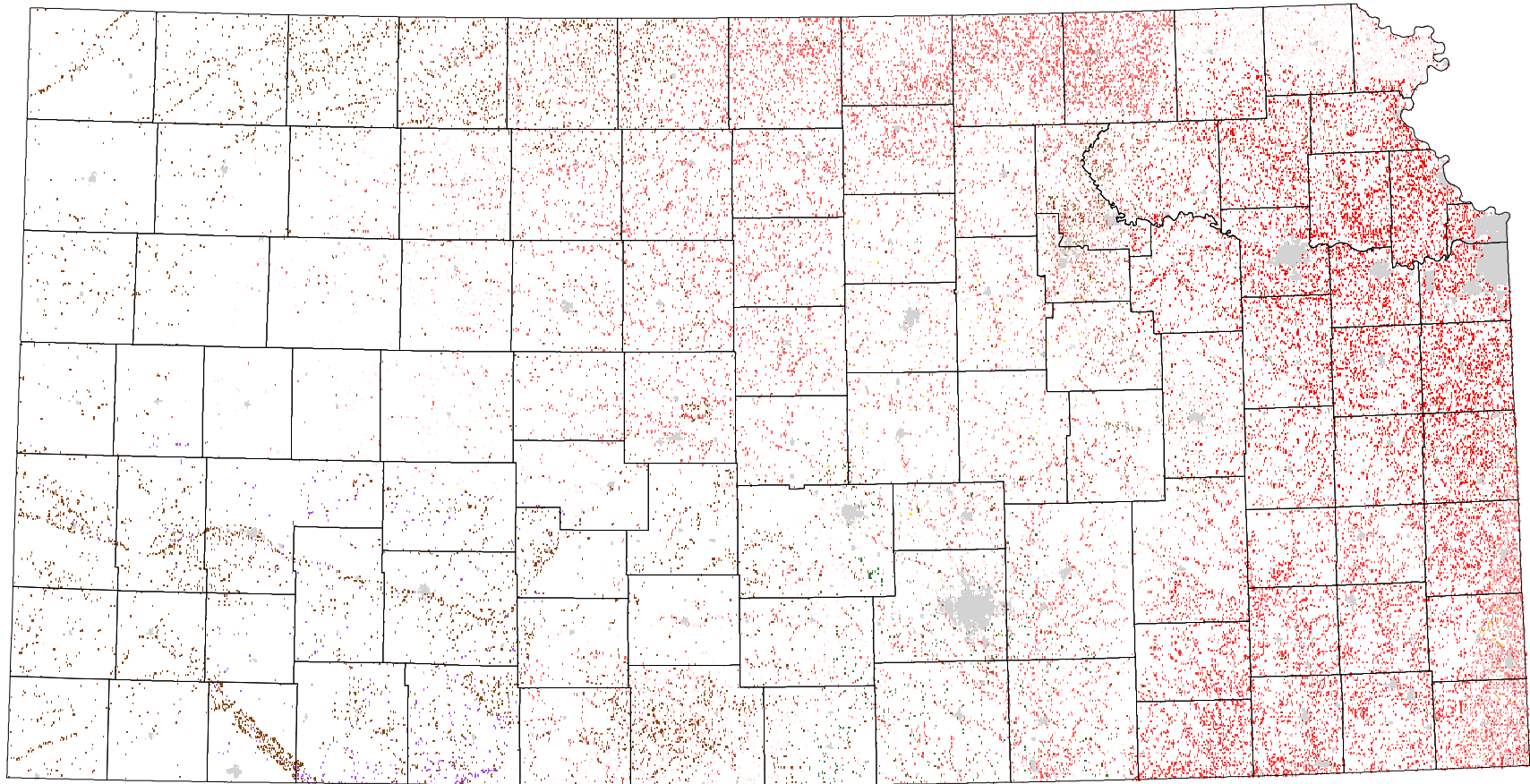
*Birds of Kansas,
Horned Lark*

Range from Johnsgard, 1998
The Birds of Nebraska

Habitat

All shaded counties will be included in the possible distribution of the species.

Blue Grosbeak



* 30 m edge