

Habitat Model for Species: American Goldfinch

Alpha Code: **AMGO** Status: Resident

[Distribution Map](#)

[Habitat Map](#)

Landcover Category

0 - Comments

Middleton, 1993

Robel and Browning, 1981

[KS GAP]

Map 30 m edge of forests and woodlands (1-11, 50-55).

Habitat Restrictions

Comments

Winter habitat resembles summer habitat. Avoids mature forest and prefers shrubs in early successional growth with clear space on at least one side of nest site. Does use forest/woodland edge. Using a wildlife plot, 10km south of Manhattan, planted with a wide variety of trees and shrubs 3-6 years of age. Thornless multiflora rose and multiflora rose x rugosa (*Rosa multiflora*) were the most heavily used woody plant species. assume scattered trees or shrubs for nesting in grasslands.

01 - Maple-Basswood Forest

Stauffer and Best, 1980

Baicich and Harrison, 1997

Middleton, 1993

[KS GAP]

30 m edge.

Breeds over a wide variety of habitats with openings and where trees and shrubs are present. Low shrubs, deciduous saplings, or mature trees in isolation or on forest edge.

02 - Oak-Hickory Forest

Stauffer and Best, 1980

Bent, 1968

Baicich and Harrison, 1997

Middleton, 1993

[KS GAP]

30 m edge.

Breeds over a wide variety of habitats with openings and where trees and shrubs are present. Low shrubs, deciduous saplings, or mature trees in isolation or on forest edge.

03 - Post Oak-Blackjack Oak Forest

Baicich and Harrison, 1997

Middleton, 1993

[KS GAP]

30 m edge.

Breeds over a wide variety of habitats with openings and where trees and shrubs are present. Low shrubs, deciduous saplings, or mature trees in isolation or on forest edge.

04 - Pecan Floodplain Forest

Baicich and Harrison, 1997

Middleton, 1993

[KS GAP]

30 m edge.

Breeds over a wide variety of habitats with openings and where trees and shrubs are present. Low shrubs, deciduous saplings, or mature trees in isolation or on forest edge. Flood plains characteristic of early successional growth preferred.

05 - Ash-Elm-Hackberry Floodplain Forest

Stauffer and Best, 1980

Baicich and Harrison, 1997

Faanes, 1987

Faanes, 1984

Middleton, 1993

[KS GAP]

30 m edge.

Breeds over a wide variety of habitats with openings and where trees and shrubs are present. Edge species. Nesting in wooded draws. Low shrubs, deciduous saplings, or mature trees in isolation or on forest edge. Flood plains characteristic of early successional growth preferred.

06 - Cottonwood Floodplain Forest

Brooks, 1971
Baicich and Harrison, 1997

Zimmerman and Tatschl, 1975
Middleton, 1993

[KS GAP] 30 m edge.

07 - Mixed Oak Floodplain

Baicich and Harrison, 1997

Middleton, 1993

Finck, 1984
Zimmerman, 1993
[KS GAP]

30 m edge.

08 - Bur Oak Floodplain Woodland

Baicich and Harrison, 1997

Middleton, 1993

Finck, 1984
Zimmerman, 1993
[KS GAP]

30 m edge.

09 - Mixed Oak Ravine

Baicich and Harrison, 1997

Middleton, 1993

Finck, 1984
Zimmerman, 1993
[KS GAP]

30 m edge.

10 - Post Oak-Blackjack Oak Woodland

Baicich and Harrison, 1997

Middleton, 1993

[KS GAP]

30 m edge.

11 - Cottonwood Floodplain Woodland

Brooks, 1971
Baicich and Harrison, 1997

Faanes, 1984
Middleton, 1993

[KS GAP] 30 m edge.

Breeds over a wide variety of habitats with openings and where trees and shrubs are present.

Low shrubs, deciduous saplings, or mature trees in isolation or on forest edge. Flood plains characteristic of early successional growth preferred.

Breeds over a wide variety of habitats with openings and where trees and shrubs are present.

Low shrubs, deciduous saplings, or mature trees in isolation or on forest edge. Flood plains characteristic of early successional growth preferred. wintering in gallery forest

Breeds over a wide variety of habitats with openings and where trees and shrubs are present.

Low shrubs, deciduous saplings, or mature trees in isolation or on forest edge. Flood plains characteristic of early successional growth preferred. wintering in gallery forest

Breeds over a wide variety of habitats with openings and where trees and shrubs are present.

Low shrubs, deciduous saplings, or mature trees in isolation or on forest edge. wintering in gallery forest

Breeds over a wide variety of habitats with openings and where trees and shrubs are present.

Low shrubs, deciduous saplings, or mature trees in isolation or on forest edge.

Breeds over a wide variety of habitats with openings and where trees and shrubs are present.

Nesting in wooded draws. Low shrubs, deciduous saplings, or mature trees in isolation or on forest edge. Flood plains characteristic of early successional growth preferred.

14 - Willow Shrubland

Bent, 1968
Brooks, 1971
Baicich and Harrison, 1997

Middleton, 1993

Breeds over a wide variety of habitats with openings and where trees and shrubs are present.
Low shrubs, deciduous saplings, or mature trees in isolation or on forest edge.

15 - Buttonbush (Swamp) Shrubland

Bent, 1968
Baicich and Harrison, 1997

Middleton, 1993

Breeds over a wide variety of habitats with openings and where trees and shrubs are present.
Low shrubs, deciduous saplings, or mature trees in isolation or on forest edge.

17 - Tallgrass Prairie

Cink and Lowther, 1989
Kahl et al., 1985
Finck, 1984
Zimmerman, 1993

with woody invasion

Nesting on floodplain tallgrass prairie (Baker

wintering on prairie
dogwood thickets

18 - Sand Prairie

Griebel et al., 1998

20 - Western Wheatgrass

[KS GAP]

30 m edge.

22 - Mixed Prairie

[KS GAP]

30 m edge.

30 - Low or Wet Prairie

Cink and Lowther, 1989

Nesting on floodplain tallgrass prairie (Baker

40 - Non-native Grassland

Stauffer and Best, 1980
Bryan and Best, 1991

Observed nesting in waterways.

41 - CRP

Johnson and Schwartz, 1993
Klute and Robel, 1997
Patterson and Best, 1996
King, 1991

44 - Cultivated Land

Saskatchewan Wetland Conservation Corporation, 1995
Patterson and Best, 1996
Basore et al., 1986
Middleton, 1993

cultivated land
row-crop

cultivated land

50 - Deciduous Forest-Mined Land

Bent, 1968
Baicich and Harrison, 1997

Middleton, 1993

Breeds over a wide variety of habitats with openings and where trees and shrubs are present.
Low shrubs, deciduous saplings, or mature trees in isolation or on forest edge.

[KS GAP]

30 m edge.

51 - Maple Floodplain Forest

Stauffer and Best, 1980
Baicich and Harrison, 1997

Middleton, 1993

[KS GAP] 30 m edge.

52 - Evergreen Forest-Disturbed Land

Middleton, 1993

[KS GAP] 30 m edge.

55 - Deciduous Woodland

Baicich and Harrison, 1997

Middleton, 1993

[KS GAP] 30 m edge.

60 - Mixed Prairie-Disturbed Land

Saskatchewan Wetland Conservation Corporation, 1995

71 - Weedy Upland

Saskatchewan Wetland Conservation Corporation, 1995
Middleton, 1979
Worley, 1987
Zimmerman and Tatschl, 1975
Middleton, 1993

81 - Urban Areas

Middleton, 1979
Middleton, 1979
Middleton, 1993

91 - Ozark Sandstone Glade / Prairie - not mapped

Stauffer and Best, 1980

Breeds over a wide variety of habitats with openings and where trees and shrubs are present.

Low shrubs, deciduous saplings, or mature trees in isolation or on forest edge. Flood plains characteristic of early successional growth preferred.

Low shrubs, deciduous saplings, or mature trees in isolation or on forest edge. Nests in conifers.

Breeds over a wide variety of habitats with openings and where trees and shrubs are present.

Low shrubs, deciduous saplings, or mature trees in isolation or on forest edge.

newly disturbed areas

weedy fields
old fields provide optimum habitat
old field habitat

weedy fields

Nest in urban area in the city.

Nesting on campus.

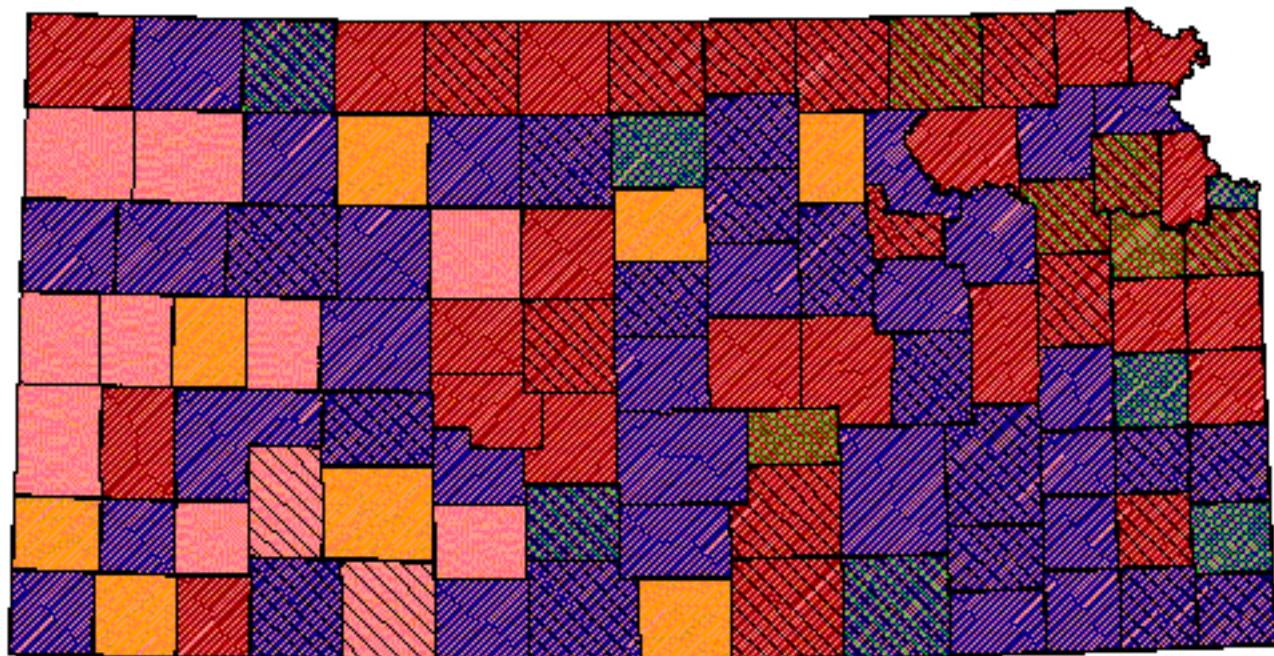
orchards, suburban gardens, bird feeders

Reference List

1. Baicich, P. J. and C. J. Harrison. 1997. A guide to the nests, eggs, and nestling of North American birds. Second edition. Academic Press, San Diego, California, USA.
2. Basore, N. S., L. B. Best, and J. B. Wooley, Jr. 1986. Bird nesting in Iowa no-tillage and tilled cropland. *Journal of Wildlife Management* 50(1):19-28.
3. Bent, A. C. 1968. Life histories of North American cardinals, grosbeaks, buntings, towhees, finches, sparrows, and allies. L. A. Oliver, Jr., editor. United States National Museum Bulletin. No. 237.
4. Brooks, W. S. 1971. Songbird communities-comparison of sedge-forb meadow & willow shrub areas. *Passenger Pigeon* 33(1):39-45.
5. Bryan, G. G. and L. B. Best. 1991. Bird abundance and species richness in grassed waterways in Iowa rowcrop fields. *American Midland Naturalist* 126:90-102.
6. Cink, C. L. and P. E. Lowther. 1989. Breeding bird populations of a floodplain tallgrass prairie in Kansas. Pages 259-262 in T. B. Bragg and J. Stubbendieck, editors. *Prairie Pioneers: Ecology, History and Culture*. Proceedings of the Eleventh North American Prairie Conference.
7. Faanes, C. A. 1984. Wooded islands in a sea of prairie. *American Birds* 38(1):3-6.
8. _____. 1987. Breeding birds and vegetation structure in western North Dakota wooded draws. *Prairie Naturalist* 19(4):209-220.
9. Finck, E. J. 1984. Birds wintering on the Konza Prairie Research Natural Area. Pages 91-94 in G. K. Clambey and R. H. Pemble, editors. *The prairie: Past, present and future*. Proceedings of the Ninth North American Prairie Conference.
10. Griebel, R. L., S. L. Winter, and A. A. Steuter. 1998. Grassland birds and habitat structure in sandhills prairie managed using cattle or bison plus fire. *Great Plains Research* 8:255-268.
11. Johnson, D. H. and M. D. Schwartz. 1993. The Conservation Reserve Program: habitat for grassland birds. *Great Plains Research* 3(August):273-295.
12. Kahl, R. B., T. S. Baskett, J. A. Ellis, and J. N. Burroughs. 1985. Characteristics of summer habitats of selected nongame birds in Missouri. University of Missouri Agriculture Experiment Station Research Bulletin 1056. University of Missouri, Columbia, Missouri, USA.

13. King, J. W. 1991. Effects of the Conservation Reserve Program on selected wildlife populations in southeast Nebraska. Thesis, University of Nebraska, Lincoln, Nebraska, USA.
14. Klute, D. S. and R. J. Robel. 1997. Will conversion of Conservation Reserve Program (CRP) lands to pasture be detrimental for grassland birds in Kansas? *American Midland Naturalist* 137:206-212.
15. Middleton, A. L. A. 1979. Influence of age and habitat on reproduction by the American Goldfinch. *Ecology* 60(2):418-432.
16. _____. 1993. American Goldfinch. A. Poole and F. Gill, editors. *The Birds of North America*. No. 80. The American Ornithologists' Union and The Academy of Natural Sciences of Philadelphia, Philadelphia, Pennsylvania, USA.
17. Patterson, M. P. and L. B. Best. 1996. Bird abundance and nesting success in Iowa CRP fields: The importance of vegetation structure and composition. *American Midland Naturalist* 135:135-167.
18. Robel, R. J. and N. G. Browning. 1981. Comparative use of woody plantings by nongame birds in Kansas. *Wildlife Society Bulletin* 9(2):142-148.
19. Saskatchewan Wetland Conservation Corporation. 1995. *Songbirds of Saskatchewan*. Saskatchewan Wetland Conservation Corporation, Regina, Saskatchewan, Canada.
20. Stauffer, D. F. and L. B. Best. 1980. Habitat selection by birds of riparian communities: evaluating effects of habitat alterations. *Journal of Wildlife Management* 44(1):1-15.
21. Worley, C. 1987. Net site selectivity by the Goldfinch in an old field habitat. *Passenger Pigeon* 49(1):19-21.
22. Zimmerman, J. L. 1993. *The Birds of Konza*. University Press of Kansas, Lawrence, Kansas, USA.
23. Zimmerman, J. L. and J. L. Tatschl. 1975. Floodplain birds of Weston Bend, Missouri River. *Wilson Bulletin* 87(2):196-208.

American Goldfinch



Kansas Breeding Bird Atlas

Confirmed Breeding

Probable Breeding

Possible Breeding

Breeding Bird Survey

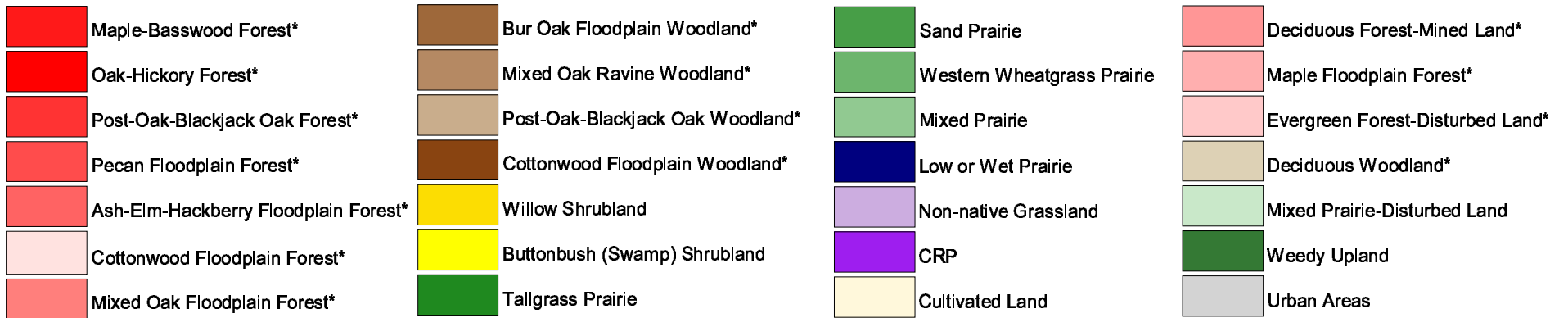
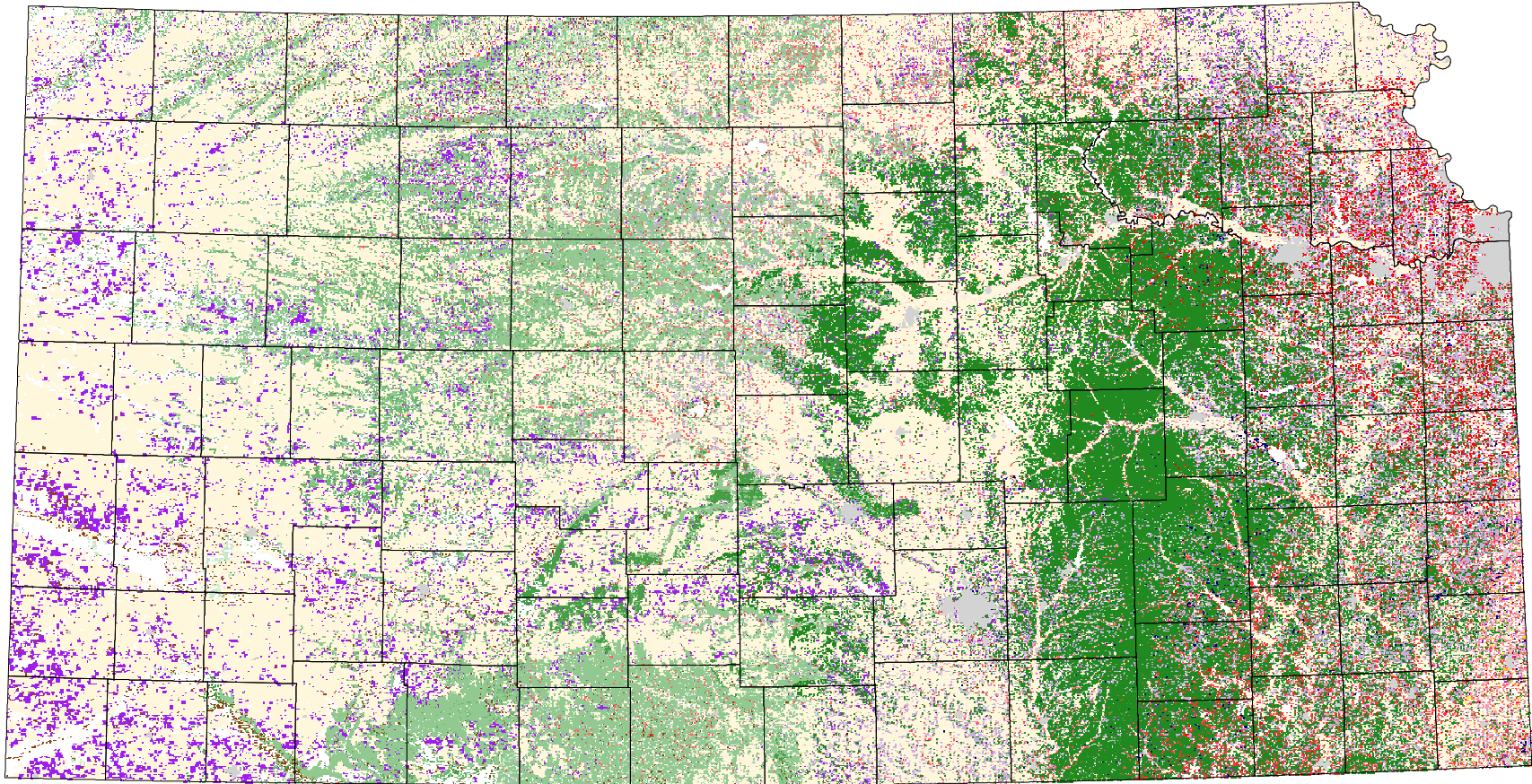
Birds of Kansas,
Horned Lark

Range from Johnsgard, 1998
The Birds of Nebraska

Habitat

All shaded counties will be included in the possible distribution of the species.

American Goldfinch



* 30 m edge