

Habitat Model for Species: **Western Kingbird**

Alpha Code: **WEKI** Status: **Breeding**

[Distribution Map](#)

[Habitat Map](#)

Landcover Category

0 - Comments

[KS GAP] Map edge (30 m) of deciduous forest and woodland except next to seasonal to permanent water (31,32,33,38,70,82)

Habitat Restrictions

Bergin, 1992

Murphy, 1983
Tatschl, 1973

MacKenzie and Sealy, 1981
Faanes, 1983
Houston, 1979

Saskatchewan Wetland Conservation Corporation, 1995

Godberg, 1979
Sutton, 1986

Stewart, 1975

Cable et al., 1992
Johnsgard, 1979

Murphy, 1988
Gamble and Bergin, 1996

01 - Maple-Basswood Forest

[KS GAP] 30 m edge not adjacent to wetlands.
Murphy, 1983 Only associated with edge.

04 - Pecan Floodplain Forest

[KS GAP] 30 m edge not adjacent to wetlands.
Bergin, 1992 Only associated with edge.
Murphy, 1983 Only associated with edge.
Tatschl, 1973 Only associated with edge.
MacKenzie and Sealy, 1981 Only associated with edge.
Stewart, 1975 Only associated with edge.
Murphy, 1988 Only associated with edge.
Gamble and Bergin, 1996 Only associated with edge.

Comments

Assume scattered trees, shelterbelts in open habitats. Mostly confined to urban habitats and uncommon in eastern one-third of state (Busby). Use fewer but larger trees, resulting in an open canopy with taller ground cover and more shrubs. Used large, widely spaced cottonwood trees with

Frequents open areas. Use trees along roads bordering pasture, wind breaks (Chinese elm), and wooded sites with discontinuous open pastures. Select trees > 30cm dbh.

Nesting chiefly in farm shelter belts and along residential streets in cities in villages. Also nest in telephone poles. More likely to nest in trees 7-10m high of shelterbelts and street-lined shade trees. In some areas, nesting in planted trees near Common in dry, open country, farms, shelter belts, river banks and roadside habitat.

Nesting on a University in Chinese elm and Austrian pine.

Common in wooded ravines. Especially characteristic of edge habitats created by man, including margins of tree claims, shelterbelts, hedgerows, orchards and partially wooded residential Shelterbelts.

Strongly associated with edge habitats, such as shelterbelts, hedgerows, orchards, woodland margins, tree-lined residential districts, etc... Often nesting in dead branches of cottonwoods or elms. In general, breeds in drier habitats. Also use man-made structures for nesting: utility poles, wind mills, antennas, fence posts, parts of buildings and metal girders.

05 - Ash-Elm-Hackberry

Floodplain Forest

[KS GAP]	30 m edge not adjacent to wetlands.
Bergin, 1992	Only associated with edge.
Murphy, 1983	Only associated with edge.
Tatschl, 1973	Only associated with edge.
MacKenzie and Sealy, 1981	Only associated with edge.
Faanes, 1983	Only associated with edge.
Godberg, 1979	Only associated with edge.
Stewart, 1975	Only associated with edge.
Faanes, 1984	Only associated with edge.
Johnsgard, 1979	Only associated with edge.
Murphy, 1988	Only associated with edge.
Gamble and Bergin, 1996	Only associated with edge.
Pinkowski, 1982	Only associated with edge.

06 - Cottonwood Floodplain

Forest

[KS GAP]	30 m edge not adjacent to wetlands.
Bergin, 1992	Only associated with edge.
Murphy, 1983	Only associated with edge.
Tatschl, 1973	Only associated with edge.
MacKenzie and Sealy, 1981	Only associated with edge.
Cuesta, 1974	Only associated with edge.
Godberg, 1979	Only associated with edge.
Stewart, 1975	Only associated with edge.
Johnsgard, 1979	Only associated with edge.
Murphy, 1988	Only associated with edge.
Gamble and Bergin, 1996	Only associated with edge.
Pinkowski, 1982	Only associated with edge.

07 - Mixed Oak Floodplain

[KS GAP]	30 m edge not adjacent to wetlands.
Bergin, 1992	Only associated with edge.
Murphy, 1983	Only associated with edge.
Tatschl, 1973	Only associated with edge.

08 - Bur Oak Floodplain

Woodland

[KS GAP]	30 m edge not adjacent to wetlands.
Bergin, 1992	Only associated with edge.
Murphy, 1983	Only associated with edge.
MacKenzie and Sealy, 1981	Only associated with edge.
Cuesta, 1974	Only associated with edge.
Godberg, 1979	Only associated with edge.
Stewart, 1975	Only associated with edge.
Murphy, 1988	Only associated with edge.
Gamble and Bergin, 1996	Only associated with edge.

09 - Mixed Oak Ravine

[KS GAP]	30 m edge not adjacent to wetlands.
MacKenzie and Sealy, 1981	Only associated with edge.
Stewart, 1975	Only associated with edge.
Gamble and Bergin, 1996	Only associated with edge.

11 - Cottonwood Floodplain

Woodland

[KS GAP]	30 m edge not adjacent to wetlands.
Bergin, 1992	Only associated with edge.
Murphy, 1983	Only associated with edge.
Tatschl, 1973	Only associated with edge.
MacKenzie and Sealy, 1981	Only associated with edge.
Faanes, 1983	Only associated with edge.
Cuesta, 1974	Only associated with edge.
Godberg, 1979	Only associated with edge.
Stewart, 1975	Only associated with edge.
Faanes, 1984	Only associated with edge.
Johnsgard, 1979	Only associated with edge.
Murphy, 1988	Only associated with edge.
Gamble and Bergin, 1996	Only associated with edge.
Pinkowski, 1982	Only associated with edge.

12 - Sandsage Shrubland

Gamble and Bergin, 1996

13 - Saltbush - Grama

Shrubland - not mapped

Gamble and Bergin, 1996

14 - Willow Shrubland

Murphy, 1983
Tatschl, 1973
MacKenzie and Sealy, 1981
Cuesta, 1974
Godberg, 1979
Stewart, 1975
Johnsgard, 1979
Murphy, 1988
Gamble and Bergin, 1996

17 - Tallgrass Prairie

Gray, 1989
Gamble and Bergin, 1996

18 - Sand Prairie

Gamble and Bergin, 1996

19 - Sandstone Prairie - not mapped

Gamble and Bergin, 1996

20 - Western Wheatgrass

Gamble and Bergin, 1996

22 - Mixed Prairie

Gamble and Bergin, 1996

25 - Shortgrass Prairie

Gamble and Bergin, 1996

30 - Low or Wet Prairie

Gamble and Bergin, 1996

36 - Cottonwood Savanna - not mapped

Bergin, 1992
Murphy, 1983
Tatschl, 1973
Johnsgard, 1979
Gamble and Bergin, 1996

40 - Non-native Grassland

- Houston, 1979 Must have isolated trees or be on edge of woodland/forest.
Saskatchewan Wetland Conservation Corporation, 1995 Must have isolated trees or be on edge of woodland/forest.
Godberg, 1979 Must have isolated trees or be on edge of woodland/forest.
Stewart, 1975 Must have isolated trees or be on edge of woodland/forest.
Baicich and Harrison, 1997 Must have isolated trees or be on edge of woodland/forest. Must have scattered trees or forest edge. Where trees absent, post or stump may be used, sometimes standing in water.
Dinsmore et al., 1984 Must have isolated trees or be on edge of woodland/forest.
Murphy, 1988 Must have isolated trees or be on edge of woodland/forest.
Gamble and Bergin, 1996 Must have isolated trees or be on edge of woodland/forest.

41 - CRP

- Klute and Robel, 1997 Must have isolated trees or be on edge of woodland/forest.
Johnson and Schwartz, 1993 Must have isolated trees or be on edge of woodland/forest.
Gamble and Bergin, 1996

44 - Cultivated Land

- Saskatchewan Wetland Conservation Corporation, 1995 Must have isolated trees or be on edge of woodland/forest.
Baicich and Harrison, 1997 Must have isolated trees or be on edge of woodland/forest. Must have scattered trees, or forest edges. Where trees are absent, post or stump may be used, sometimes standing in water.
Gamble and Bergin, 1996 Must have isolated trees or be on edge of woodland/forest.

50 - Deciduous Forest-Mined Land

- [KS GAP] 30 m edge not adjacent to wetlands.
Bergin, 1992 Only associated with edge.
Murphy, 1983 Only associated with edge.
Tatschl, 1973 Only associated with edge.
Johnsgard, 1979 Only associated with edge.
Pinkowski, 1982 Only associated with edge.

51 - Maple Floodplain Forest

- [KS GAP] 30 m edge not adjacent to wetlands.
Murphy, 1983 Only associated with edge.

52 - Evergreen

Forest-Disturbed Land

- [KS GAP] 30 m edge not adjacent to wetlands.
Tatschl, 1973 Only associated with edge.

55 - Deciduous Woodland

- [KS GAP] 30 m edge not adjacent to wetlands.
Murphy, 1983 Only associated with edge.
Tatschl, 1973 Only associated with edge.

60 - Mixed Prairie-Disturbed

Land

- Gamble and Bergin, 1996

71 - Weedy Upland

- Gamble and Bergin, 1996

81 - Urban Areas

- Tatschl, 1973 Must have isolated trees or be on edge of woodland/forest.
The South Dakota Ornithologists' Union, 1991 Must have isolated trees or be on edge of woodland/forest.
Cuesta, 1974 Must have isolated trees or be on edge of woodland/forest. Also known to nest in old cavities of flickers. Nest on utility poles or pecan trees.
Cuesta, 1974 Must have isolated trees or be on edge of woodland/forest. Nest on utility poles or pecan trees.
Houston, 1979 Must have isolated trees or be on edge of woodland/forest.
Saskatchewan Wetland Conservation Corporation, 1995 Must have isolated trees or be on edge of woodland/forest.
Godberg, 1979 Must have isolated trees or be on edge of woodland/forest.
Koonz, 1982 Must have isolated trees or be on edge of woodland/forest. Nesting inside farm building.
Sutton, 1986 Must have isolated trees or be on edge of woodland/forest.
Stewart, 1975 Must have isolated trees or be on edge of woodland/forest.
Dinsmore et al., 1984 Must have isolated trees or be on edge of woodland/forest.
Johnsgard, 1979 Must have isolated trees or be on edge of woodland/forest.
Murphy, 1988 Must have isolated trees or be on edge of woodland/forest.
Murphy, 1988 Must have isolated trees or be on edge of woodland/forest. Very abundant in city parks, campgrounds, or other mowed areas.
Gamble and Bergin, 1996 Must have isolated trees or be on edge of woodland/forest.
Pinkowski, 1982 Must have isolated trees or be on edge of woodland/forest. Nests in towers, buildings, or utility poles.

**91 - Ozark Sandstone Glade /
Prairie - not mapped**

Gamble and Bergin, 1996

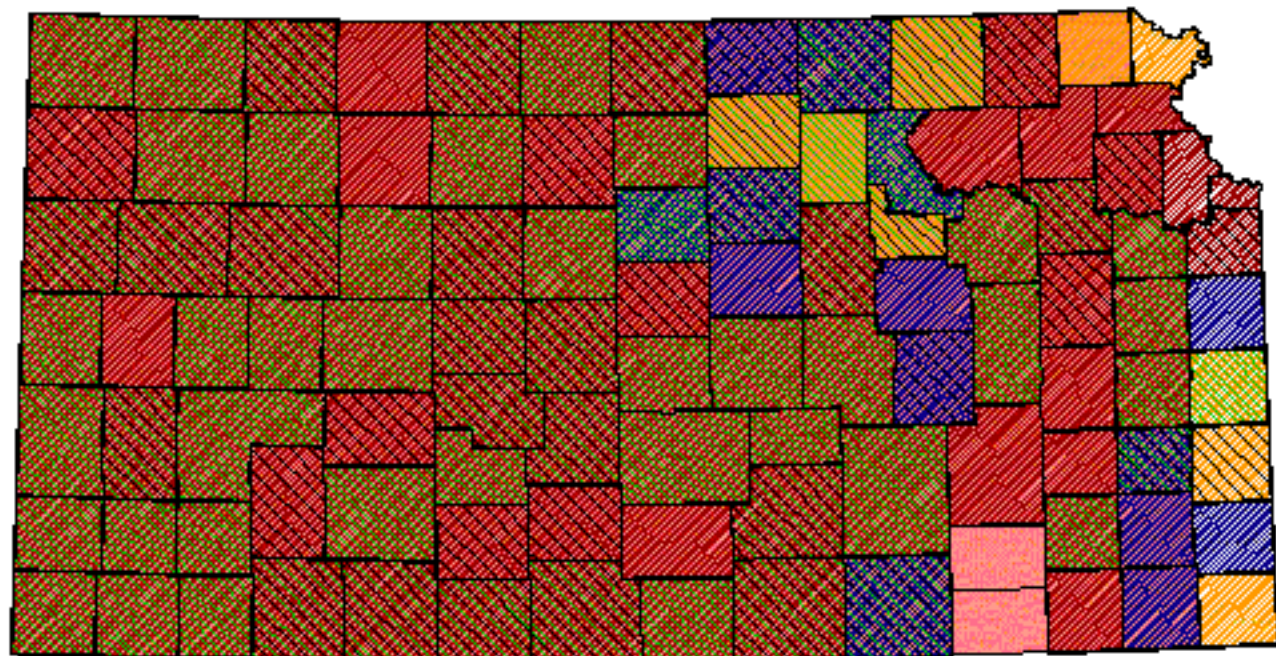
**92 - Ozark Limestone Glade -
not mapped**

Gamble and Bergin, 1996

Reference List

1. Baicich, P. J. and C. J. Harrison. 1997. A guide to the nests, eggs, and nestling of North American birds. Second edition. Academic Press, San Diego, California, USA.
2. Bergin, T. M. 1992. Habitat selection by the Western Kingbird in western Nebraska: a hierarchical analysis. *Condor* 94:903-911.
3. Cable, T. T., R. L. Schroeder, V. Brack, Jr., and P. S. Cook. 1992. Summer bird use of Kansas windbreaks. *Prairie Naturalist* 24(3):175-184.
4. Cuesta, L. R. 1974. Comparative breeding ecology of the Western Kingbird (*Tyrannus verticalis*) in three habitat types . Thesis, New Mexico State University, Las Cruces, New Mexico, USA.
5. Dinsmore, J. J., K. H. Thomas, D. Koenig, C. P. Petersen, and M. D. Roosa. 1984. Iowa Birds. Iowa State University Press, Ames, Iowa, USA.
6. Faanes, C. A. 1983. Breeding birds of wooded draws in western North Dakota. *Prairie Naturalist* 15(4):173-187.
7. _____. 1984. Wooded islands in a sea of prairie. *American Birds* 38(1):3-6.
8. Gamble, L. R. and T. M. Bergin. 1996. Western Kingbird. A. Poole and F. Gill, editors. *The Birds of North America*. No. 227. The American Ornithologists' Union and The Academy of Natural Sciences, Philadelphia, Pennsylvania, USA.
9. Godberg, N. H. 1979. Behavioral flexibility and foraging strategies in Cassin's and Western Kingbirds (*Tyrannus vociferans* and *T. verticalis*) breeding sympatrically in riparian habitats in central Arizona. Thesis, University of Illinois, Urbana, Illinois, USA.
10. Gray, L. J. 1989. Correlation between insects and birds in tallgrass prairie riparian habitats. Pages 263-265 in T. B. Bragg and J. Stubbendieck, editors. *Proceedings of the Eleventh North American Prairie Conference*. University of Nebraska Printing, Lincoln, Nebraska, USA.
11. Houston, C. S. 1979. The spread of the Western Kingbird across the prairies. *Blue Jay* 37(7):149-157.
12. Johnsgard, P. A. 1979. *Birds of the Great Plains*. University of Nebraska Press, Lincoln, Nebraska, USA.
13. Johnson, D. H. and M. D. Schwartz. 1993. The Conservation Reserve Program: habitat for grassland birds. *Great Plains Research* 3(August):273-295.
14. Klute, D. S. and R. J. Robel. 1997. Will conversion of Conservation Reserve Program (CRP) lands to pasture be detrimental for grassland birds in Kansas? *American Midland Naturalist* 137:206-212.
15. Koonz, W. H. 1982. Western Kingbird nesting in abandoned farmhouse. *Blue Jay* 40(4):219.
16. MacKenzie, D. I. and S. G. Sealy. 1981. Nest site selection in Eastern and Western Kingbirds: a multivariate approach. *Condor* (83):310-321.
17. Murphy, M. T. 1983. Nest success and nesting habits of Eastern Kingbirds and other flycatchers. *Condor* 85:208-219.
18. _____. 1988. Comparative reproductive biology of Kingbirds (*Tyrannus spp.*) in eastern Kansas. *Wilson Bulletin* 100(3):357-376.
19. Pinkowski, B. C. 1982. Western Kingbird nests in abandoned woodpecker cavity. *Wilson Bulletin* 94(1):95-96.
20. Saskatchewan Wetland Conservation Corporation. 1995. *Songbirds of Saskatchewan*. Saskatchewan Wetland Conservation Corporation, Regina, Saskatchewan, Canada.
21. Stewart, R. E. 1975. *Breeding birds of North Dakota*. Harrison Smith, Lund Press, Minneapolis, Minnesota, USA.
22. Sutton, G. M. 1986. Nests of Western Kingbirds in pines. *Oklahoma Ornithological Society* 19(1):5-6.
23. Tatschl, J. L. 1973. Niche exploitation among three closely related flycatchers in Kansas. Dissertation, Kansas State University, Manhattan, Kansas, USA.
24. The South Dakota Ornithologists' Union. 1991. *The birds of South Dakota*. Second edition. Northern State University Press, Aberdeen, South Dakota, USA.

Western Kingbird



Kansas Breeding Bird Atlas

Confirmed Breeding

Probable Breeding

Possible Breeding

Breeding Bird Survey

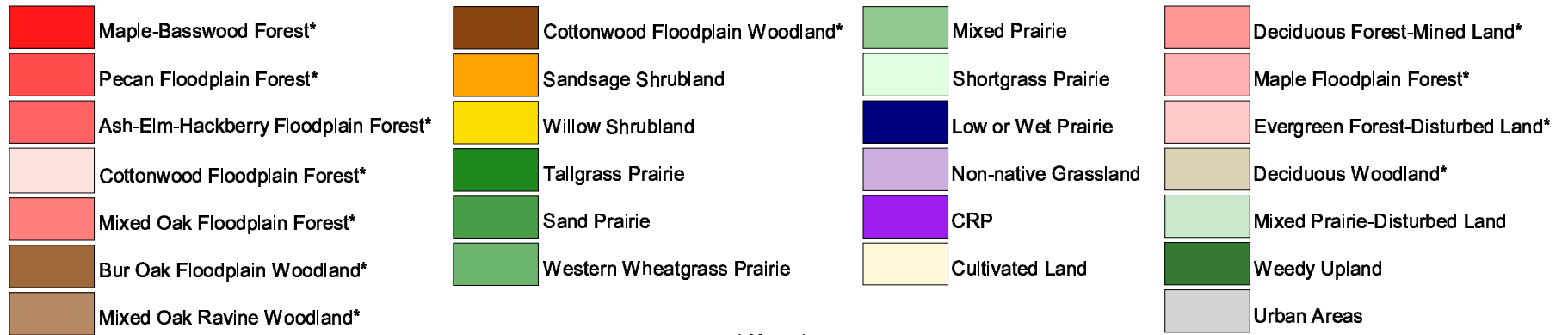
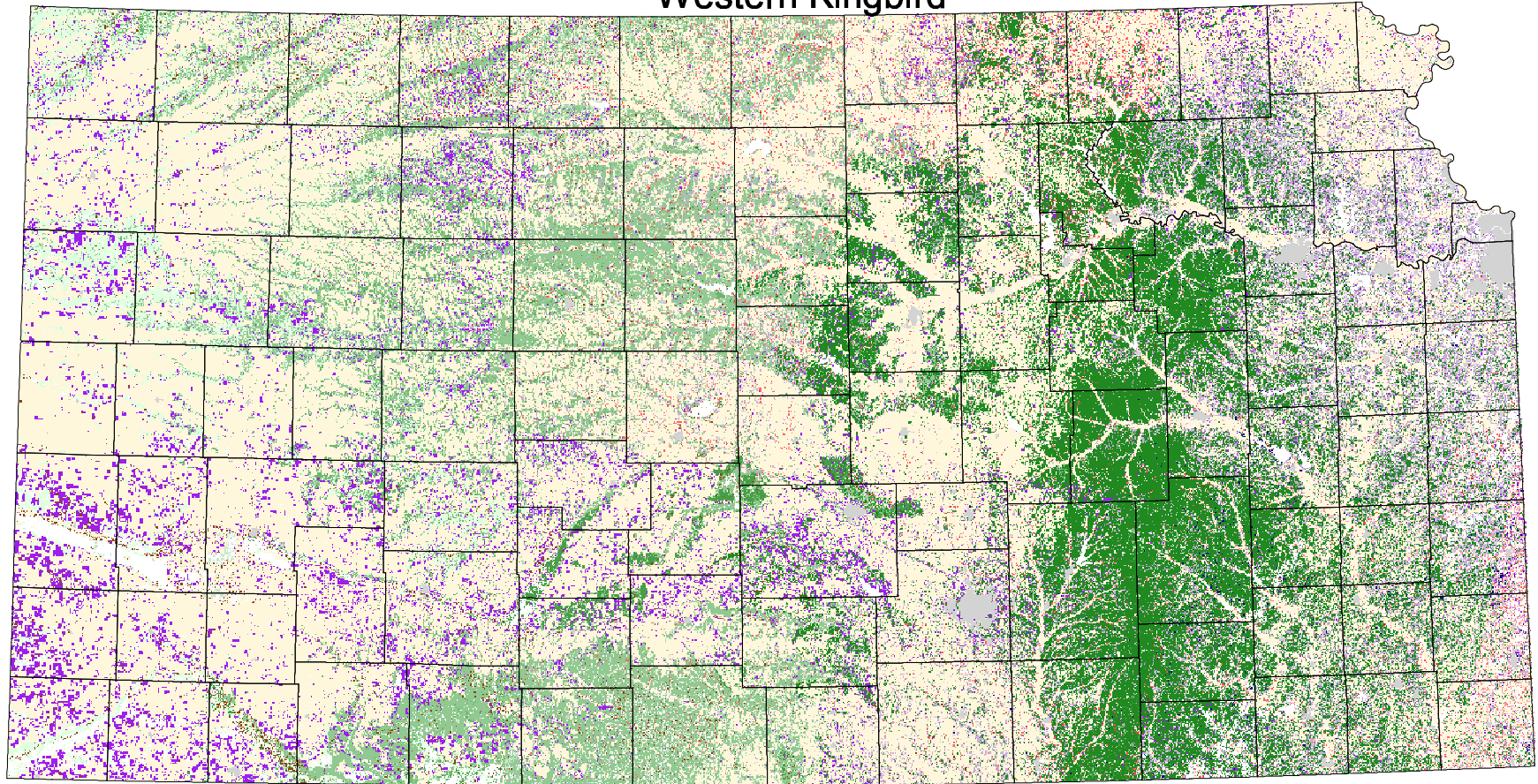
*Birds of Kansas,
Horned Lark*

Range from Johnsgard, 1998
The Birds of Nebraska

Habitat

All shaded counties will be included in the possible distribution of the species.

Western Kingbird



* 30 m edge