

Habitat Model for Species: **Warbling Vireo**

Alpha Code: **WAVI** Status: **Breeding**

[Distribution Map](#)

[Habitat Map](#)

Landcover Category

0 - Comments

[KS GAP] Map 60 m edge of forests (1-7, 50 and 51) and all woodland and urban.

Habitat Restrictions

Comments

James, 1976

Choice of habitat appears to be on the basis of general habitat configuration, rather than tree species composition.

Stewart, 1975
Thompson and Ely, 1992

mature shelterbelts
In woodland and towns. Does not penetrate deeply into the interior of dense eastern forest. Common in riparian woodlands.

James, 1971

Order of vireos listed from open-country to shaded forest: Bell's, Warbling, White-eyed, Yellow-throated, and Red-eyed. Listed from decreasing shrub density: White-eyed, Red-eyed, Bell's, Warbling, and Yellow-throated. Require taller trees than others.

Gardali and Ballard, 2000

In woodlands and forests, especially along water but sometimes in upland areas away from water. Farm fencerows.

01 - Maple-Basswood Forest

Stewart, 1975
Thompson and Ely, 1992 edge. Map 60 m edge.
Gardali and Ballard, 2000

02 - Oak-Hickory Forest

Stewart, 1975
Thompson and Ely, 1992 edge. Map 60 m edge.
Gardali and Ballard, 2000

03 - Post Oak-Blackjack Oak Forest

Stewart, 1975
Thompson and Ely, 1992 edge. Map 60 m edge.
Gardali and Ballard, 2000

04 - Pecan Floodplain Forest

Stewart, 1975
Thompson and Ely, 1992 edge. Map 60 m edge.
Gardali and Ballard, 2000

05 - Ash-Elm-Hackberry Floodplain Forest

Stauffer and Best, 1980
Stewart, 1975
Thompson and Ely, 1992 edge. Map 60 m edge.
Gardali and Ballard, 2000

06 - Cottonwood Floodplain Forest

Stewart, 1975
Thompson and Ely, 1992 edge. Map 60 m edge.
Gardali and Ballard, 2000

07 - Mixed Oak Floodplain

Stewart, 1975
Thompson and Ely, 1992 edge. Map 60 m edge.
Zimmerman, 1993
Gardali and Ballard, 2000

Probably nests, but no records.

08 - Bur Oak Floodplain

Woodland

Kahl et al., 1985
Stewart, 1975
Thompson and Ely, 1992
Zimmerman, 1993
Gardali and Ballard, 2000

especially in or near forest edge

Probably nests, but no records.

09 - Mixed Oak Ravine

Stewart, 1975
Thompson and Ely, 1992
Zimmerman, 1993
Gardali and Ballard, 2000

Probably nests, but no records.

10 - Post Oak-Blackjack Oak

Woodland

Stewart, 1975
Thompson and Ely, 1992
Gardali and Ballard, 2000

11 - Cottonwood Floodplain

Woodland

Stewart, 1975
Thompson and Ely, 1992
Gardali and Ballard, 2000

50 - Deciduous Forest-Mined

Land

Stewart, 1975
Thompson and Ely, 1992
Gardali and Ballard, 2000

edge. Map 60 m edge.

51 - Maple Floodplain Forest

Stauffer and Best, 1980
Stewart, 1975
Thompson and Ely, 1992
Gardali and Ballard, 2000

edge. Map 60 m edge.

55 - Deciduous Woodland

Stewart, 1975
Thompson and Ely, 1992
Gardali and Ballard, 2000

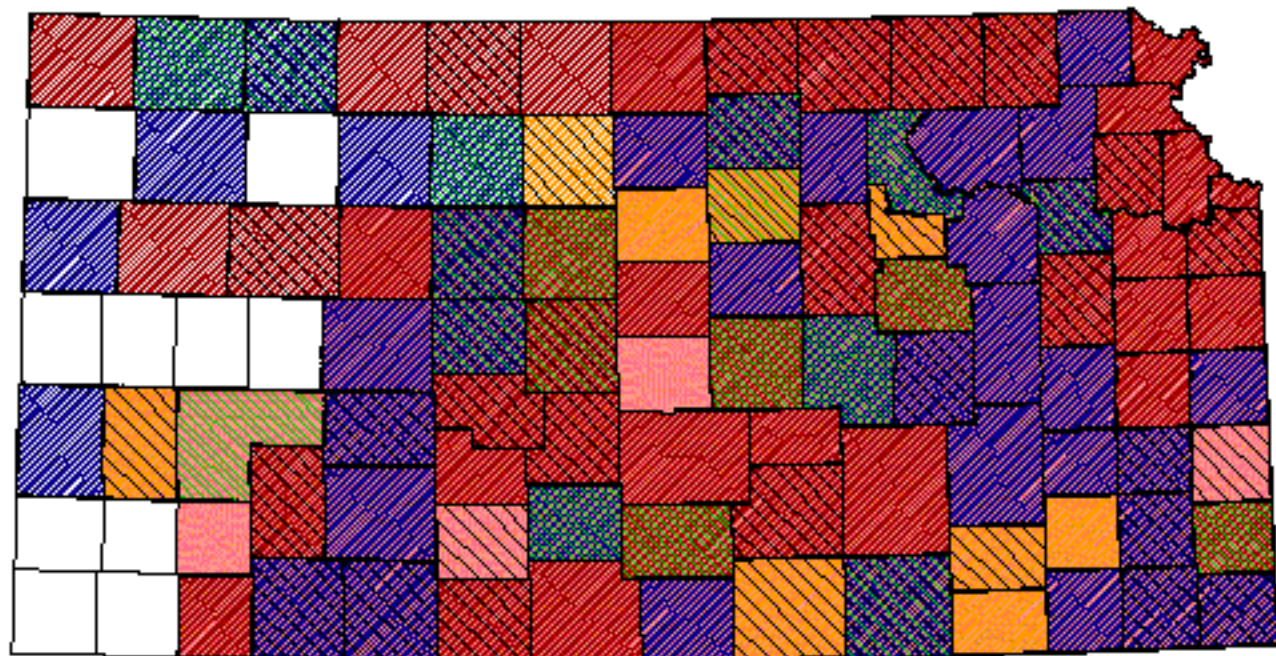
81 - Urban Areas

Stewart, 1975
Thompson and Ely, 1992
Gardali and Ballard, 2000






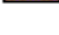

Reference List

1. Gardali, T. and G. Ballard. 2000. Warbling Vireo. A. Poole and F. Gill, editors. The Birds of North America. no. 551. The Birds of North America, Inc., Philadelphia, Pennsylvania, USA.
2. James, F. C. 1971. Ordination of habitat relationships among breeding birds. *Wilson Bulletin* 83(3):215-236.
3. James, R. D. 1976. Foraging behavior and habitat selection of three species of vireos in southern Ontario. *Wilson Bulletin* 88(1):62-75.
4. Kahl, R. B., T. S. Baskett, J. A. Ellis, and J. N. Burroughs. 1985. Characteristics of summer habitats of selected nongame birds in Missouri. University of Missouri Agriculture Experiment Station Research Bulletin 1056. University of Missouri, Columbia, Missouri, USA.
5. Stauffer, D. F. and L. B. Best. 1980. Habitat selection by birds of riparian communities: evaluating effects of habitat alterations. *Journal of Wildlife Management* 44(1):1-15.
6. Stewart, R. E. 1975. *Breeding birds of North Dakota*. Harrison Smith, Lund Press, Minneapolis, Minnesota, USA.
7. Thompson, M. C. and C. Ely. 1992. *Birds in Kansas: Volume II*. Public Education Series No. 12. University of Kansas Museum of Natural History, University Press of Kansas, Lawrence, Kansas, USA.
8. Zimmerman, J. L. 1993. *The Birds of Konza*. University Press of Kansas, Lawrence, Kansas, USA.

Warbling Vireo



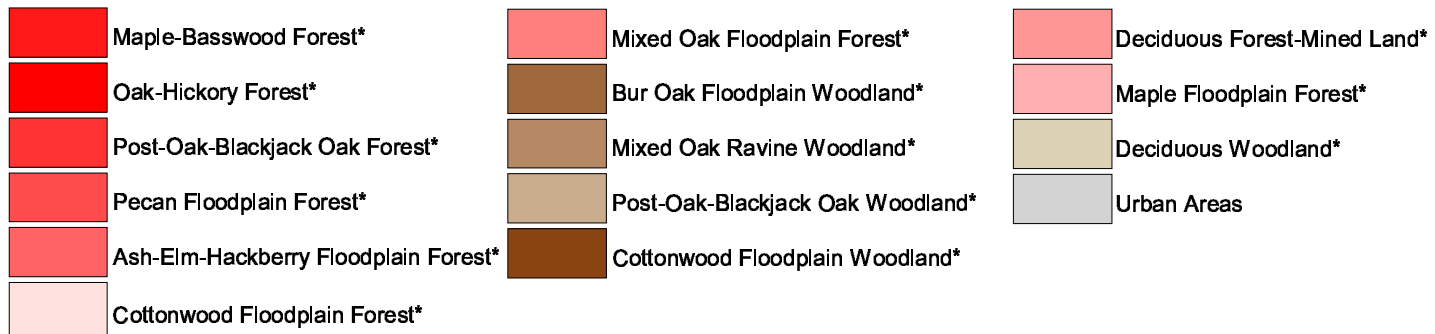
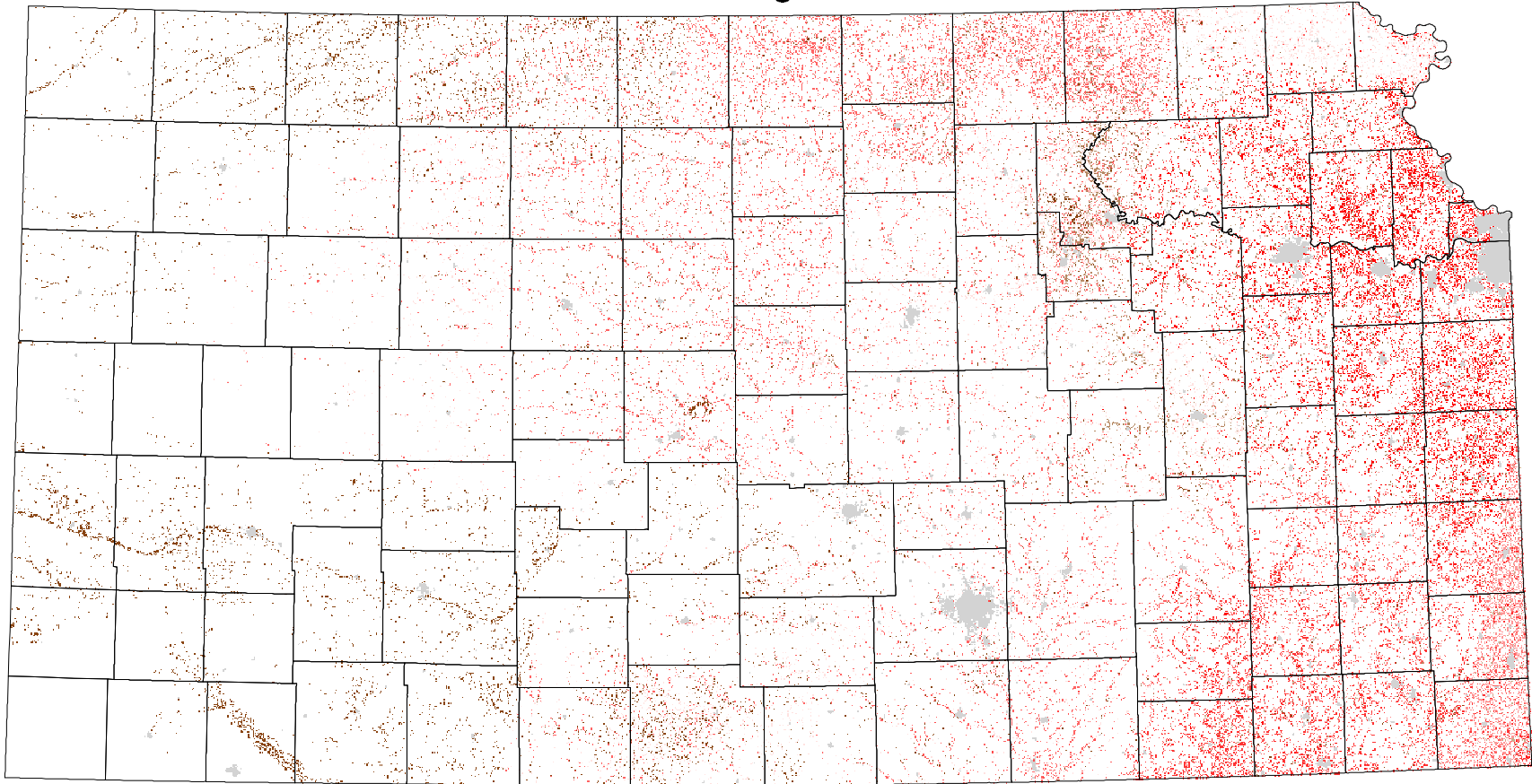
Kansas Breeding Bird Atlas

- | | | |
|--|---|--|
|  Confirmed Breeding |  Breeding Bird Survey |  Range from Johnsgard, 1998 |
|  Probable Breeding |  <i>Birds of Kansas, Horned Lark</i> |  <i>The Birds of Nebraska</i> |
|  Possible Breeding | | |

Habitat

All shaded counties will be included in the possible distribution of the species.

Warbling Vireo



* 60 m edge