

Habitat Model for Species: Tree Swallow

Alpha Code: TRES Status: Breeding

[Distribution Map](#)

[Habitat Map](#)

Landcover Category

0 - Comments

[KS GAP] 30 m edge of permanent water (38,82); 30 m edge of selected forests or woodlands (4-9,11,51,55)

Newell, 1979

Soulliere and Rusch, 1996
Johnson and Schwartz, 1993
Long and Long, 1997
Rendell and Robertson, 1990

Stewart, 1975

Rendell and Robertson, 1989
Burns and Dahlgren, 1983
Robertson et al., 1992

Rice, 1980
Bent, 1942

Habitat Restrictions

Comments

Nesting in a woodpecker hole above water of a lake in one of several drowned cottonwood trees.
Used wood duck boxes in WI.
Counted on CRP fields (not mapped).
Use nest boxes.
Occupied nest sites at distances 3-100m from forest edge. Avoided nesting close to forest edge when there was a choice of nest sites (nest-boxes).
Margins of lakes, ponds, streams and oxbows, usually with woodlands that contain standing dead
Nests in flooded dead trees in beaver ponds.
Nests in flooded dead trees of large reservoir.
Open areas, usually near water, including fields, marshes, and shorelines with standing dead trees that provide sites for cavities. Require substantial open areas around nest site. Good breeding success requires good foraging areas within 4 km of
Nesting in dead trees in pools at Marais Des Cygnes.
Nests in old apple orchards and in holes in trees.
Prefer to nest in bird boxes in fields.

04 - Pecan Floodplain Forest

[KS GAP] Map 30 m edge next to open areas (nonforest or non woodland).
Dinsmore et al., 1984
Stewart, 1975

05 - Ash-Elm-Hackberry Floodplain Forest

[KS GAP] Map 30 m edge next to open areas (nonforest or non woodland).
Dinsmore et al., 1984
Stewart, 1975

06 - Cottonwood Floodplain Forest

[KS GAP] Map 30 m edge next to open areas (nonforest or non woodland).
Dinsmore et al., 1984
Stewart, 1975

07 - Mixed Oak Floodplain

[KS GAP] Map 30 m edge next to open areas (nonforest or non woodland).
Dinsmore et al., 1984
Stewart, 1975

08 - Bur Oak Floodplain Woodland

[KS GAP] Map 30 m edge next to open areas (nonforest or non woodland).
Dinsmore et al., 1984
Stewart, 1975

09 - Mixed Oak Ravine

[KS GAP] Map 30 m edge next to open areas (nonforest or non woodland).
Dinsmore et al., 1984
Stewart, 1975

11 - Cottonwood Floodplain

Woodland

[KS GAP] Map 30 m edge next to open areas (nonforest or non woodland).
Dinsmore et al., 1984
Stewart, 1975

17 - Tallgrass Prairie

Robertson et al., 1992

18 - Sand Prairie

Robertson et al., 1992

19 - Sandstone Prairie - not mapped

Robertson et al., 1992

22 - Mixed Prairie

Robertson et al., 1992

28 - Spikerush Playa Lake

Robertson et al., 1992

29 - Playa Lake

Robertson et al., 1992

30 - Low or Wet Prairie

Robertson et al., 1992

31 - Freshwater Marsh

Robertson et al., 1992

32 - Bulrush Marsh

Robertson et al., 1992

33 - Cattail Marsh

Robertson et al., 1992

36 - Cottonwood Savanna - not mapped

Dinsmore et al., 1984
Stewart, 1975

38 - Forb Playa Lake

[KS GAP] Map 30 m edge (margins).
Stewart, 1975
Robertson et al., 1992

39 - Pondweed Aquatic Wetland - not mapped

[KS GAP] Map 30 m edge (margins).
Stewart, 1975
Robertson et al., 1992

40 - Non-native Grassland

Robertson et al., 1992

41 - CRP

Robertson et al., 1992

51 - Maple Floodplain Forest

[KS GAP] Map 30 m edge next to open areas (nonforest or non woodland).
Dinsmore et al., 1984
Stewart, 1975

55 - Deciduous Woodland

[KS GAP] Map 30 m edge next to open areas (nonforest or non woodland).

Dinsmore et al., 1984

Stewart, 1975

Parren, 1991

old orchard

70 - Weedy Marsh

Robertson et al., 1992

71 - Weedy Upland

Robertson et al., 1992

82 - Water (Lake)

[KS GAP]

Map 30 m edge (margins).

Stewart, 1975

Robertson et al., 1992

82 - Water (River)

Robertson et al., 1992

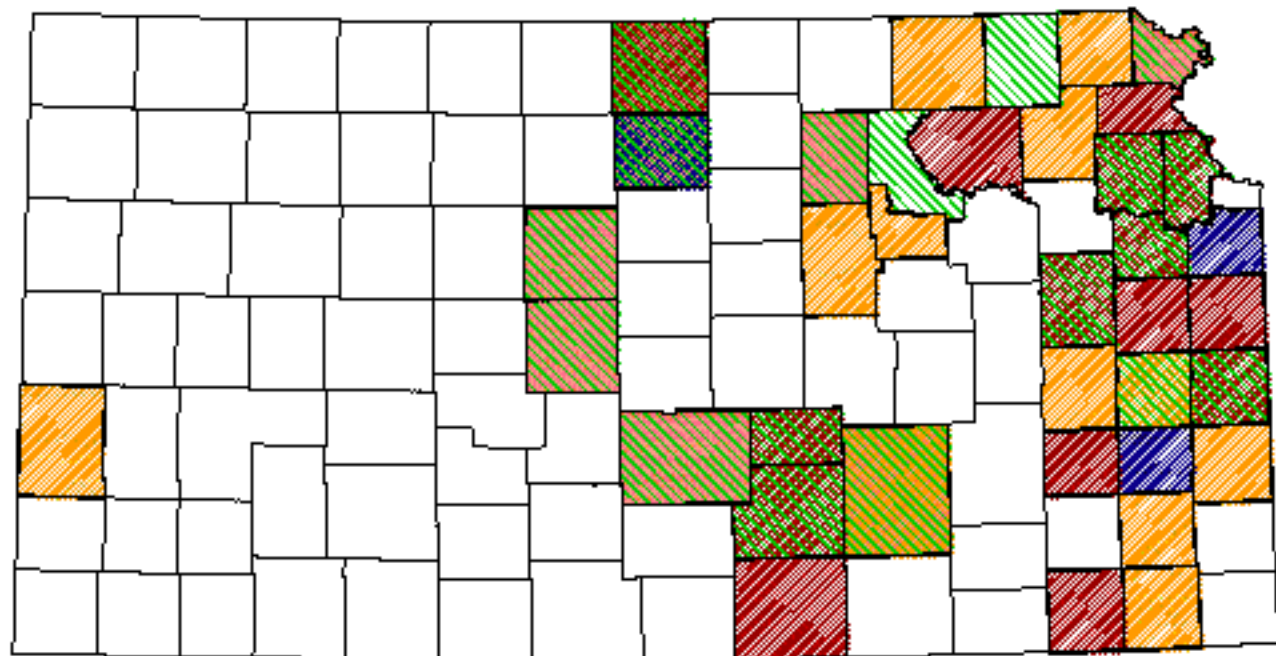
90 - Riverine Sand Flats and Bars - not mapped

Robertson et al., 1992

Reference List

1. Bent, A. C. 1942. Life histories of North American flycatchers, larks, swallows, and their allies. United States National Museum Bulletin. 179:83-91.
2. Burns, T. L. and R. B. Dahlgren. 1983. Breeding bird use of flooded dead trees in Rathbun Reservoir Iowa. Pages 99-101 *in* Snag habitat management: proceedings of the symposium. General Technical Report RM-99. U.S. Forest Service, Fort Collins, Colorado, USA.
3. Dinsmore, J. J., K. H. Thomas, D. Koenig, C. P. Petersen, and M. D. Roosa. 1984. Iowa Birds. Iowa State University Press, Ames, Iowa, USA.
4. Johnson, D. H. and M. D. Schwartz. 1993. The Conservation Reserve Program: habitat for grassland birds. Great Plains Research 3(August):273-295.
5. Long, M. P. and C. I. Long. 1997. Breeding records of the Tree Swallows at Grand Lake, Oklahoma. Bulletin of the Oklahoma Ornithological Society 30(2/3):21-23.
6. Newell, J. G. 1979. Breeding of Tree Swallows in Cimarron County, Oklahoma. Bulletin of the Oklahoma Ornithological Society 12(3):24.
7. Parren, S. G. 1991. Evaluation of nest-box sites selected by Eastern Bluebirds, Tree Swallows, and House Wrens. Wildlife Society Bulletin 19:270-277.
8. Rendell, W. B. and R. J. Robertson. 1989. Nest-site characteristics, reproductive success and cavity availability for Tree Swallows breeding in natural cavities. Condor 91(4):875-885.
9. _____. 1990. Influence of forest edge on nest-site selection by tree swallows. Wilson Bulletin 102(4):634-644.
10. Rice, O. O. 1980. Tree Swallow nesting colony at Marais Des Cygnes wildlife management area. Kansas Ornithological Society Bulletin 31-3:23-24.
11. Robertson, R. J., B. J. Stutchbury, and R. R. Cohen. 1992. Tree Swallow. A. Poole and F. Gill, editors. The Birds of North America. No. 11. The American Ornithologists' Union and The Academy of Natural Sciences of Philadelphia, Philadelphia, Pennsylvania, USA.
12. Soulliere, G. J. and T. P. Rusch. 1996. Nesting characteristics of Hooded Mergansers, Wood Duck, European Starlings and Tree Swallows in Wisconsin. Journal of Field Ornithology 67(1):100-104.
13. Stewart, R. E. 1975. Breeding birds of North Dakota. Harrison Smith, Lund Press, Minneapolis, Minnesota, USA.

Tree Swallow




Kansas Breeding Bird Atlas

 Confirmed Breeding

 Probable Breeding

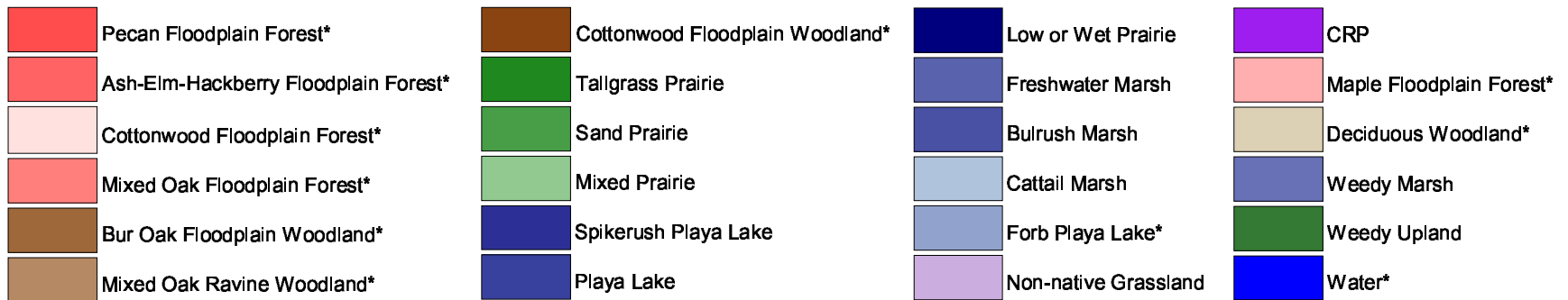
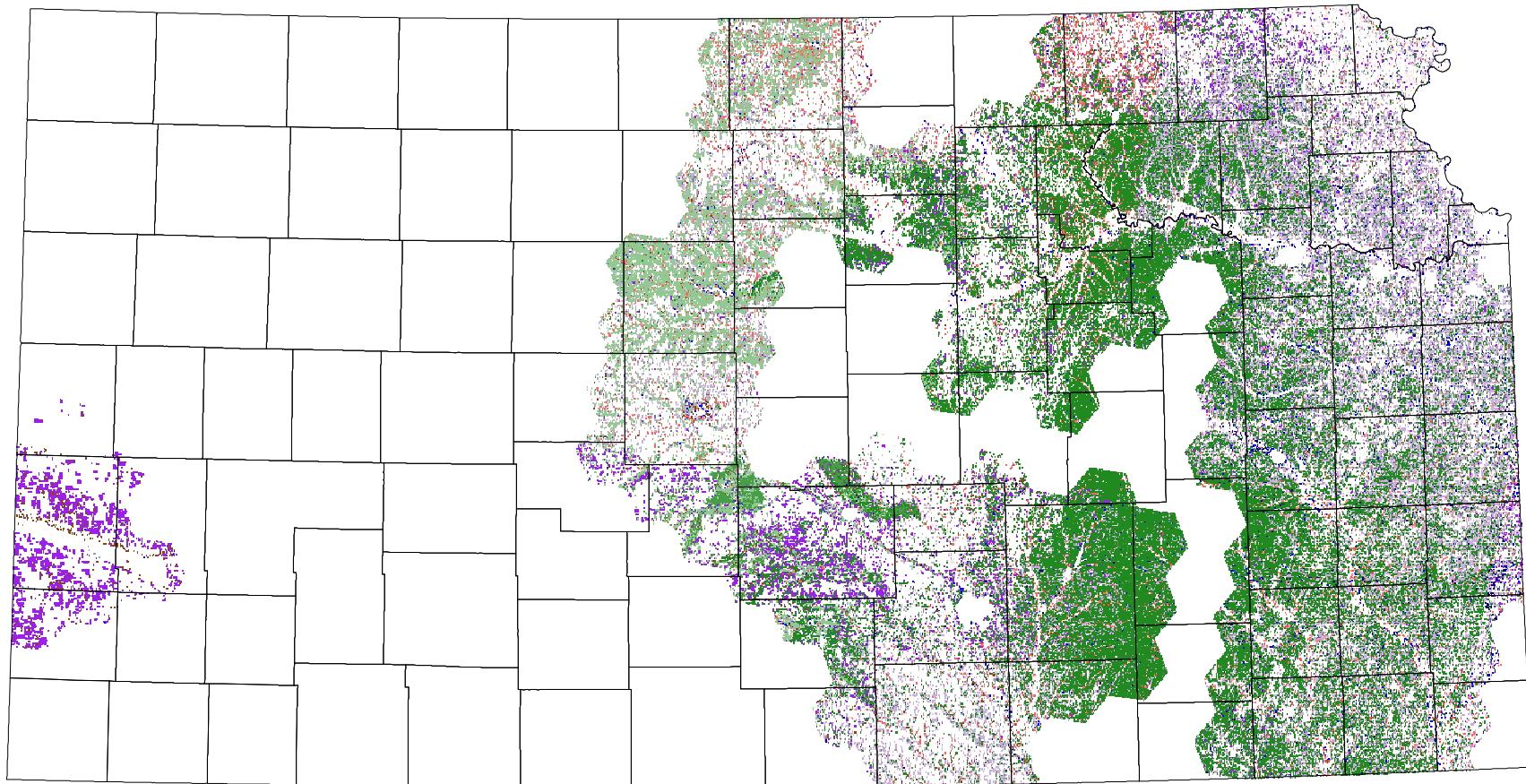
 Possible Breeding

 Breeding Bird Survey

 Birds of Kansas,
Horned Lark

 Range from Johnsgard, 1882
The Birds of Nebraska

Tree Swallow



* 30 m edge