

# Habitat Model for Species: Scissor-tailed Flycatcher

Alpha Code: STFL Status: Breeding

[Distribution Map](#)

[Habitat Map](#)

## Landcover Category

### **0 - Comments**

[KS GAP] Map upland deciduous forest and woodland edge (30 m) next to open (non-treed) habitats listed.

[Reviewer]

Tyler and F. Jane Bechtold, 1996 Edge into forest/woodland = or < 0.5km.

Tatschl, 1973

### **Habitat Restrictions**

### **Comments**

Assume scattered trees in open habitats (Busby).

Thomas Flowers: isolated trees bordering wheat and milo fields. Found nests in lone trees on edge of cultivated fields. (Unique situations - don't map.)

Preferred habitat in Oklahoma includes scattered trees and shelterbelts in prairie country. Dan Mulhern: nesting in *Maclura pomifera* and *Gleditsia triacanthos* (personal observation).

Favors more open areas (clumped trees) than the other tree categories in all locations in KS. Frequents open wooded areas.

### **01 - Maple-Basswood Forest**

[KS GAP]	30 m edge.
Baicich and Harrison, 1997	Must be on edge of forest.
Fitch, 1950	Only found on edge.
Tatschl, 1973	Must be on edge of open area.
Bent, 1942	Only found on woodland edge.
Murphy, 1983	Must be adjacent to country road.

### **02 - Oak-Hickory Forest**

[KS GAP]	30 m edge.
Baicich and Harrison, 1997	Found only on woodland edge.
Baicich and Harrison, 1997	Must be on edge of forest.
Fitch, 1950	Only found on edge.
Tatschl, 1973	Must be on edge of open area.
Bent, 1942	Only found on woodland edge.
Murphy, 1983	Must be adjacent to country road.

### **03 - Post Oak-Blackjack Oak Forest**

[KS GAP]	30 m edge.
Baicich and Harrison, 1997	Found only on woodland edge.
Fitch, 1950	Only found on edge.
Bent, 1942	Only found on woodland edge.

### **05 - Ash-Elm-Hackberry Floodplain Forest**

[KS GAP]	30 m edge.
Tatschl, 1973	Must be on edge of open area.

### **08 - Bur Oak Floodplain Woodland**

[KS GAP]	30 m edge.
Baicich and Harrison, 1997	Only found on woodland edge.
Bouricius, 1992	Only found on woodland edge.
Fitch, 1950	Only found on edge.
Regosin, 1998	Found only on edge.
Tatschl, 1973	Must be on edge of open area.
Bent, 1942	Only found on woodland edge.
Murphy, 1983	Must be adjacent to country road.
Murphy, 1983	Must be adjacent to country road.

### **09 - Mixed Oak Ravine**

[KS GAP]	30 m edge.
Baicich and Harrison, 1997	Only found on woodland edge.
Fitch, 1950	Only found on edge.
Regosin, 1998	Found only on edge.
Tatschl, 1973	Must be on edge of open area.
Bent, 1942	Only found on woodland edge.
Murphy, 1983	Must be adjacent to country road.

## **10 - Post Oak-Blackjack Oak**

### **Woodland**

[KS GAP]	30 m edge.
Baicich and Harrison, 1997	Only found on woodland edge.
Fitch, 1950	Only found on edge.
Regosin, 1998	Found only on edge.
Bent, 1942	Only found on woodland edge.

## **12 - Sandsage Shrubland**

Regosin, 1998	Must have isolated or scattered trees or shrubs.
Regosin, 1998	Must have scattered or isolated trees or shrubs.

## **13 - Saltbush - Grama Shrubland - not mapped**

Regosin, 1998	Must have isolated or scattered trees or shrubs.
---------------	--

## **14 - Willow Shrubland**

Regosin, 1998

## **17 - Tallgrass Prairie**

Regosin, 1998	Must border woodland or have scattered trees or shrubs.
---------------	---

## **18 - Sand Prairie**

Regosin, 1998	Must border woodland or have isolated trees or shrubs.
---------------	--

## **19 - Sandstone Prairie - not mapped**

Regosin, 1998	Must border woodland or have isolated trees or shrubs.
---------------	--

## **20 - Western Wheatgrass**

Regosin, 1998	Must border woodland or have scattered trees or shrubs.
---------------	---

## **22 - Mixed Prairie**

Regosin, 1998	Must border woodland or have scattered trees or shrubs.
---------------	---

## **40 - Non-native Grassland**

Dinsmore et al., 1984	Isolated trees or shrubs must be present.
Fitch, 1950	Isolated trees or shrubs must be present.
Regosin, 1998	Isolated trees or shrubs must be present.
Klute and Robel, 1997	Isolated trees or shrubs must be present.
Tatschl, 1973	Isolated trees or shrubs must be present.
Murphy, 1988	Isolated or scattered trees or shrubs must be present.

## **41 - CRP**

Klute and Robel, 1997	Isolated trees or shrubs must be present.
-----------------------	---

## **50 - Deciduous Forest-Mined**

### **Land**

[KS GAP]	30 m edge.
Baicich and Harrison, 1997	Must be on edge of forest.
Bouricius, 1992	Only found on woodland edge.
Fitch, 1950	Only found on edge.
Tatschl, 1973	Must be on edge of open area.
Bent, 1942	Only found on woodland edge.
Murphy, 1983	Must be adjacent to country road.

## **55 - Deciduous Woodland**

[KS GAP]	30 m edge.
[Reviewer]	

Dinsmore et al., 1984	Must be on edge of woodland.
Baicich and Harrison, 1997	Only found on woodland edge.
Fitch, 1950	Only found on edge.
Regosin, 1998	Found on edge.
Klute and Robel, 1997	Must be on edge of woodland.
Tatschl, 1973	Must be on edge of open area.
Murphy, 1988	Found only on edges of woodlands.
Bent, 1942	Must be on edge of woodland.
Murphy, 1983	Must be adjacent to country road.

## **60 - Mixed Prairie-Disturbed**

### **Land**

Bouricius, 1992	Scattered trees or shrubs must be present.
Regosin, 1998	Must border woodland or have scattered trees or shrubs.

Dan Mulhern: nesting in *Maclura pomifera* and *Gleditsia triacanthos* (personal observation).

## **71 - Weedy Upland**

Dinsmore et al., 1984	Isolated trees or shrubs must be present.
Fitch, 1950	Isolated trees or shrubs must be present.
Regosin, 1998	Must border woodland or have scattered trees or shrubs.
Klute and Robel, 1997	Isolated trees or shrubs must be present.
Tatschl, 1973	Isolated trees or shrubs must be present.
Murphy, 1988	Isolated or scattered trees or shrubs must be present.

## **81 - Urban Areas**

Baicich and Harrison, 1997	Isolated trees or shrubs must be present.
Withgott, 1991	Isolated trees or shrubs must be present.

Roosting in *Quercus palustris*, *Juglans nigra*, *Populus deltoides*, and *Platanus occidentalis*. Preferred roosting sites are open stands of medium to large sized deciduous trees that lack appreciable understory. Parks, orchards and residential plantings

Russell and Larry D. Foreman, 1979	Isolated trees or shrubs must be present.
Bouricius, 1992	Isolated trees or shrubs must be present.
Fitch, 1950	Isolated trees or shrubs must be present.
Regosin, 1998	Isolated trees or shrubs must be present.

Reported to nest on streetlights, telephone poles and other human made structures. Sometimes nests in dead trees.

Murphy, 1988	Isolated trees or shrubs must be present.
Bent, 1942	Isolated trees or shrubs must be present.

Uses bridges, windmill towers, and telephone poles for nesting.

Murphy, 1983	Must be adjacent to country road. Isolated trees or shrubs must be present.
--------------	---

## **91 - Ozark Sandstone Glade / Prairie - not mapped**

Baicich and Harrison, 1997	
Fitch, 1950	Isolated trees or shrubs must be present.
Tatschl, 1973	
Bent, 1942	

Breeding in scattered small trees and shrubs.

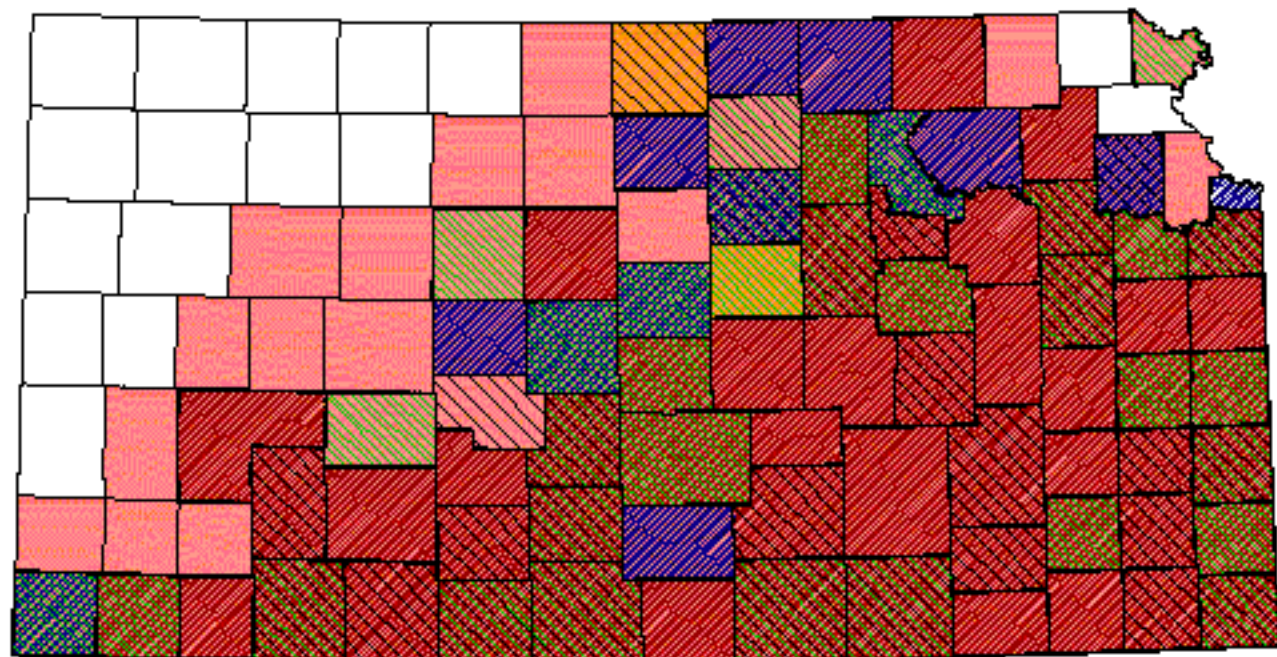
## **92 - Ozark Limestone Glade - not mapped**

Regosin, 1998	Must border woodland or have scattered trees or shrubs.
---------------	---

### Reference List

1. Baicich, P. J. and C. J. Harrison. 1997. A guide to the nests, eggs, and nestling of North American birds. Second edition. Academic Press, San Diego, California, USA.
2. Bent, A. C. 1942. Life histories of North American flycatchers, larks, swallows, and their allies. United States National Museum Bulletin. 179:83-91.
3. Bouricius, S. M. 1992. A scissor-tailed flycatcher in a montane meadow. Colorado Field Ornithologists Journal 26(2):76-77.
4. Dinsmore, J. J., K. H. Thomas, D. Koenig, C. P. Petersen, and M. D. Roosa. 1984. Iowa Birds. Iowa State University Press, Ames, Iowa, USA.
5. Fitch, F. W., Jr. 1950. Life history and ecology of the scissor-tailed flycatcher, *Muscivora forficata*. Auk 67(2):145-168.
6. Klute, D. S. and R. J. Robel. 1997. Will conversion of Conservation Reserve Program (CRP) lands to pasture be detrimental for grassland birds in Kansas? American Midland Naturalist 137:206-212.
7. Murphy, M. T. 1983. Nest success and nesting habits of Eastern Kingbirds and other flycatchers. Condor 85:208-219.
8. \_\_\_\_\_. 1988. Comparative reproductive biology of Kingbirds (*Tyrannus spp.*) in eastern Kansas. Wilson Bulletin 100(3):357-376.
9. Regosin, J. V. 1998. Scissor-tailed Flycatcher. A. Poole and F. Gill, editors. The Birds of North America. no. 342. The Birds of North America, Inc., Philadelphia, Pennsylvania, USA.
10. Russell, S. J. and Larry D. Foreman. 1979. Use of artificial materials in nests of urban scissor-tailed flycatchers. Texas Ornithological Society Bulletin 12(1):22-25.
11. Tatschl, J. L. 1973. Niche exploitation among three closely related flycatchers in Kansas. Dissertation, Kansas State University, Manhattan, Kansas, USA.
12. Tyler, J. D. and F. Jane Bechtold. 1996. Statuses of four avian species in southwestern Oklahoma. Bulletin of the Oklahoma Ornithological Society 29(4):27-34.
13. Withgott, J. H. 1991. Pre-migratory roosting behavior of scissor-tailed flycatchers in Oklahoma. Bulletin of the Oklahoma Ornithological Society 24(3):18-21.

# Scissor-tailed Flycatcher





## Kansas Breeding Bird Atlas


 Confirmed Breeding

 Probable Breeding

 Possible Breeding

 Breeding Bird Survey

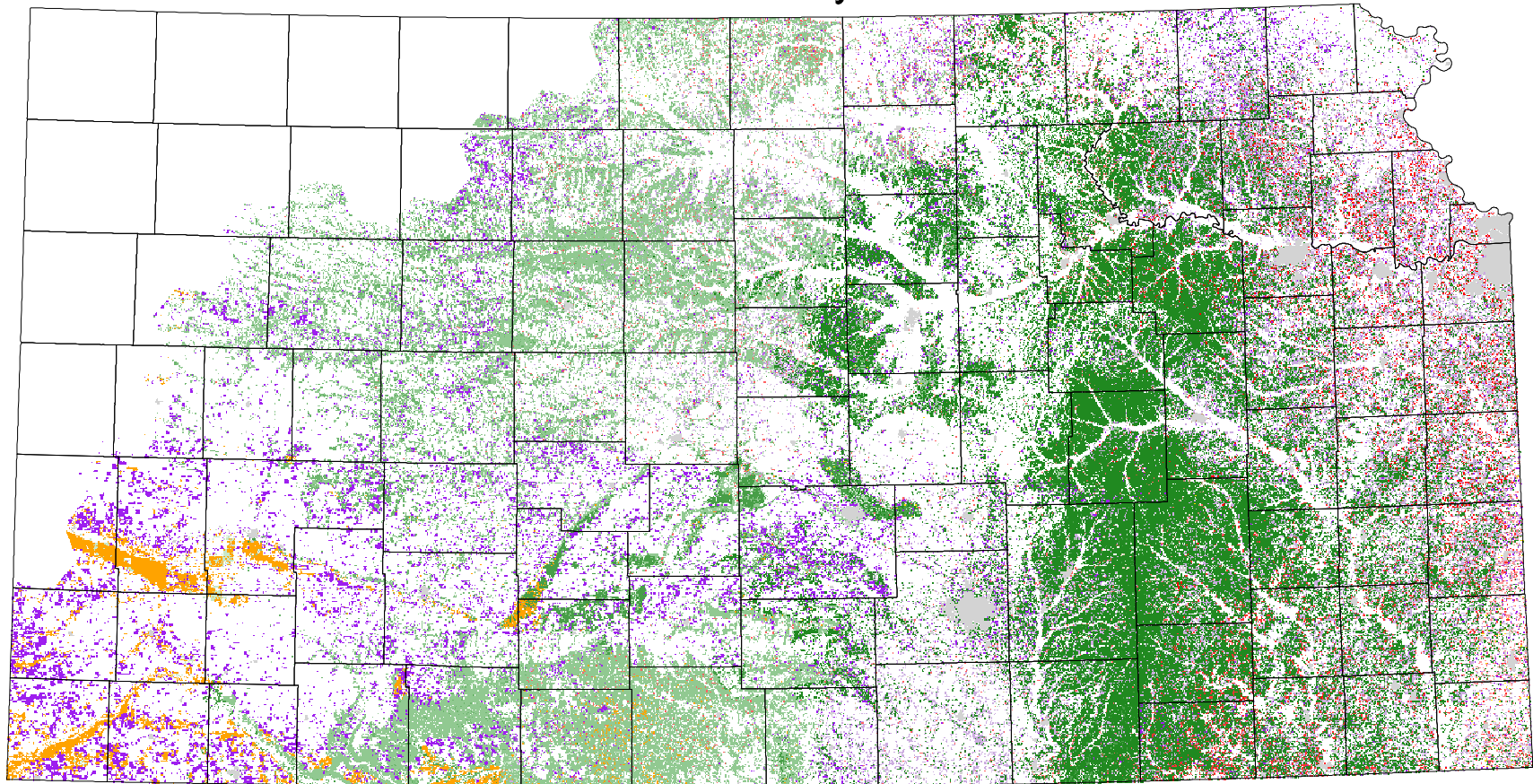
 *Birds of Kansas,*  
*Horned Lark*

 Range from Johnsgard, 1998  
*The Birds of Nebraska*

Habitat

All shaded counties will be included in the possible distribution of the species.

# Scissor-tailed Flycatcher



\* 30 m edge