

Habitat Model for Species: House Wren

Alpha Code: HOWR Status: Breeding

[Distribution Map](#)

[Habitat Map](#)

Landcover Category

0 - Comments

[KS GAP]

Habitat Restrictions

Map 30 m edge of all forest habitats.

Comments

01 - Maple-Basswood Forest

Stauffer and Best, 1980
Peterson and Grubb, 1983
Belles-Isles and Picman, 1986b
Johnston, 1947
Johnson, 1998

at or near edges. Map 30 m edge.

02 - Oak-Hickory Forest

Stauffer and Best, 1980
Peterson and Grubb, 1983
Belles-Isles and Picman, 1986b
Johnson, 1998

at or near edges. Map 30 m edge.

03 - Post Oak-Blackjack Oak Forest

Johnson, 1998

at or near edges. Map 30 m edge.

04 - Pecan Floodplain Forest

Johnsgard, 1998
Johnson, 1998

at or near edges. Map 30 m edge.

05 - Ash-Elm-Hackberry Floodplain Forest

Stauffer and Best, 1980
Burns and Dahlgren, 1983
Faanes, 1987
Johnsgard, 1998
Obermeyer, 1992
Johnson, 1998

edge

at or near edges. Map 30 m edge.

06 - Cottonwood Floodplain Forest

Brown, 1985
Johnsgard, 1998
Brush, 1994
Belles-Isles and Picman, 1986a
Gutzwiller and Anderson, 1987
Kahl et al., 1985
Johnson, 1998

at or near edges. Map 30 m edge.

07 - Mixed Oak Floodplain

Zimmerman, 1993
Gray, 1989
Gray, 1993
Johnsgard, 1998
Johnson, 1998

at or near edges. Map 30 m edge.

08 - Bur Oak Floodplain Woodland

Zimmerman, 1993
Gray, 1989
Gray, 1993
Johnston, 1947
Johnsgard, 1998
Johnson, 1998

"open woodlands"

09 - Mixed Oak Ravine

Zimmerman, 1993
Gray, 1989
Gray, 1993
Johnsgard, 1998
Johnson, 1998

"open woodlands"

10 - Post Oak-Blackjack Oak Woodland

Johnsgard, 1998
Johnson, 1998

"open woodlands"

11 - Cottonwood Floodplain Woodland

Sedgwick and Knopf, 1986
Sedgwick and Knopf, 1990
Guinan and Sealy, 1989
Finch, 1989
Brown, 1985
Johnsgard, 1998
Brush, 1994
Belles-Isles and Picman, 1986a
Gutzwiller and Anderson, 1987
Sedgwick and Knopf, 1987
Johnson, 1998

"open woodlands"

15 - Buttonbush (Swamp)

Shrubland

Brown, 1985
Johnson, 1998

If cavities are available
If cavities are available

36 - Cottonwood Savanna - not mapped

Johnsgard, 1998
Johnson, 1998

50 - Deciduous Forest-Mined Land

Johnsgard, 1998
Johnson, 1998

Map 30 m edge.

51 - Maple Floodplain Forest

Stauffer and Best, 1980
Burns and Dahlgren, 1983
Johnsgard, 1998
Brush, 1994
Johnson, 1998

at or near edges. Map 30 m edge.

55 - Deciduous Woodland

Parren, 1991
Johnson, 1998

"open woodlands"

81 - Urban Areas

Johnson, 1998

91 - Ozark Sandstone Glade / Prairie - not mapped

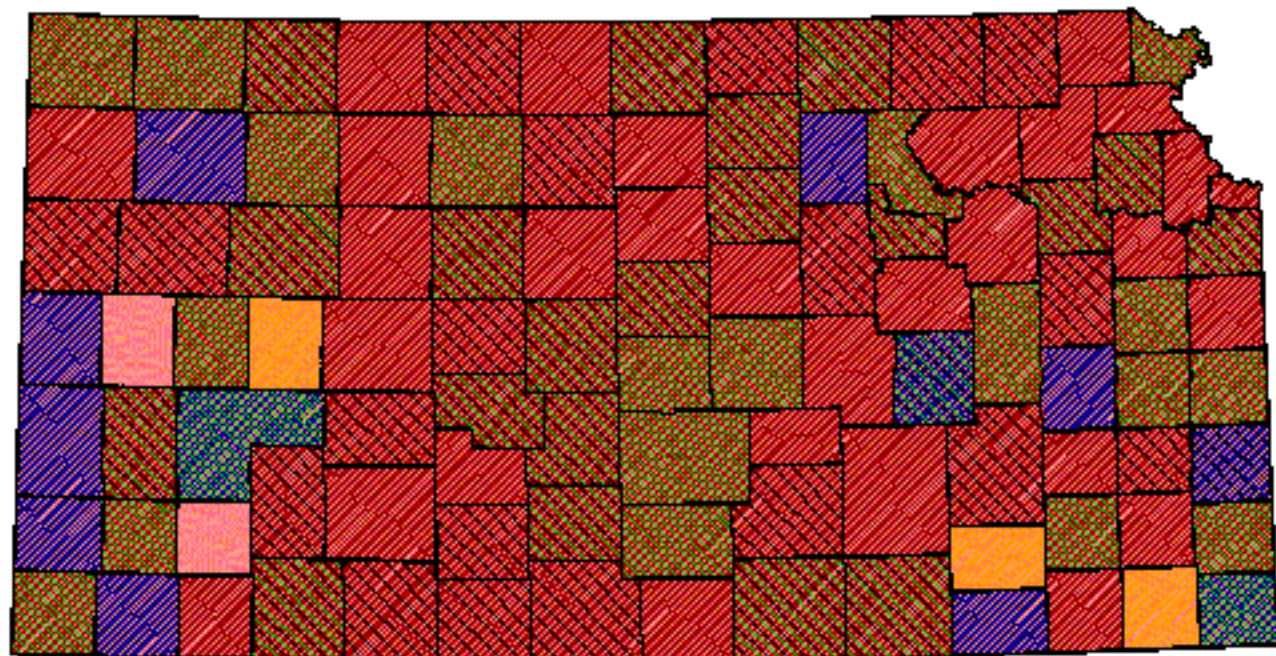
Stauffer and Best, 1980

Reference List

1. Belles-Isles, J.-C. and J. Picman. 1986a. House Wren nest-destroying behavior. *Condor* 88:190-193.
2. _____. 1986b. Nesting losses and nest site preferences in House Wrens. *Condor* 88:483-486.
3. Brown, I. S. 1985. Successful nesting of the House Wren in western Oklahoma. *Bulletin of the Oklahoma Ornithological Society* 18(3):17-20.
4. Brush, T. 1994. Effects of competition and predation on Prothonotary Warblers and House Wrens nesting in eastern Iowa. *Journal of the Iowa Academy of Science* 101(1):28-30.
5. Burns, T. L. and R. B. Dahlgren. 1983. Breeding bird use of flooded dead trees in Rathbun Reservoir Iowa. Pages 99-101 *in* Snag habitat management: proceedings of the symposium. General Technical Report RM-99. U.S. Forest Service, Fort Collins, Colorado, USA.

6. Faanes, C. A. 1987. Breeding birds and vegetation structure in western North Dakota wooded draws. *Prairie Naturalist* 19(4):209-220.
7. Finch, D. M. 1989. Relationships of surrounding riparian habitat to nest-box use and reproductive outcome in House Wrens. *Condor* 91:848-859.
8. Gray, L. J. 1989. Correlation between insects and birds in tallgrass prairie riparian habitats. Pages 263-265 in T. B. Bragg and J. Stubbendieck, editors. *Proceedings of the Eleventh North American Prairie Conference*. University of Nebraska Printing, Lincoln, Nebraska, USA.
9. _____. 1993. Response of insectivorous birds to emerging aquatic insects in riparian habitats of a tallgrass prairie stream. *American Midland Naturalist* 129:288-300.
10. Guinan, D. M. and S. G. Sealy. 1989. Foraging-substrate use by house wrens nesting in natural cavities in a riparian habitat. *Canadian Journal of Zoology* 67:61-67.
11. Gutzwiller, K. J. and S. H. Anderson. 1987. Multiscale associations between cavity-nesting birds and features of Wyoming streamside woodlands. *Condor* 89:534-548.
12. Johnsgard, P. A. 1998. *The Birds of Nebraska*. University of Nebraska-Lincoln, (available from author).
13. Johnson, L. S. 1998. House Wren. A. Poole and F. Gill, editors. *The Birds of North America*. no. 380. The Birds of North America, Inc., Philadelphia, Pennsylvania, USA.
14. Johnston, V. R. 1947. Breeding birds of the forest edge in Illinois. *Condor* 49(2):45-53.
15. Kahl, R. B., T. S. Baskett, J. A. Ellis, and J. N. Burroughs. 1985. Characteristics of summer habitats of selected nongame birds in Missouri. University of Missouri Agriculture Experiment Station Research Bulletin 1056. University of Missouri, Columbia, Missouri, USA.
16. Obermeyer, B. 1992. Effect of logging on breeding bird diversity in riparian forests on Fall River Wildlife Area. *Kansas Ornithological Society Bulletin* 43(3):21-27.
17. Parren, S. G. 1991. Evaluation of nest-box sites selected by Eastern Bluebirds, Tree Swallows, and House Wrens. *Wildlife Society Bulletin* 19:270-277.
18. Peterson, A. W. and T. C. Grubb, Jr. 1983. Artificial trees as a cavity substrate for woodpeckers. *Journal of Wildlife Management* 47(3):790-798.
19. Sedgwick, J. A. and F. L. Knopf. 1986. Cavity-nesting birds and the cavity-tree resource in plains cottonwood bottomlands. *Journal of Wildlife Management* 50(2):247-252.
20. _____. 1987. Breeding bird response to cattle grazing of a cottonwood bottomland. *Journal of Wildlife Management* 51(1):230-237.
21. _____. 1990. Habitat relationships and nest site characteristics of cavity-nesting birds in cottonwood floodplains. *Journal of Wildlife Management* 54(1):112-124.
22. Stauffer, D. F. and L. B. Best. 1980. Habitat selection by birds of riparian communities: evaluating effects of habitat alterations. *Journal of Wildlife Management* 44(1):1-15.
23. Zimmerman, J. L. 1993. *The Birds of Konza*. University Press of Kansas, Lawrence, Kansas, USA.


House Wren





Kansas Breeding Bird Atlas


 Confirmed Breeding

 Probable Breeding

 Possible Breeding

 Breeding Bird Survey

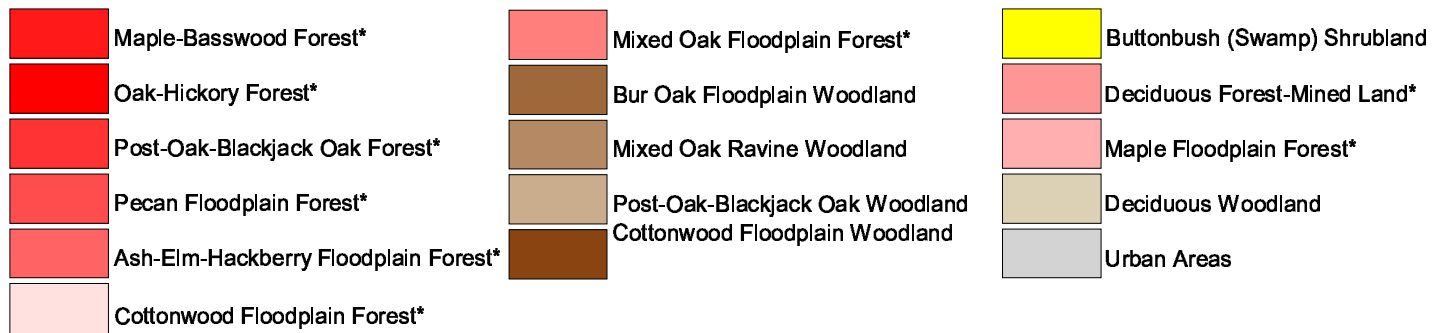
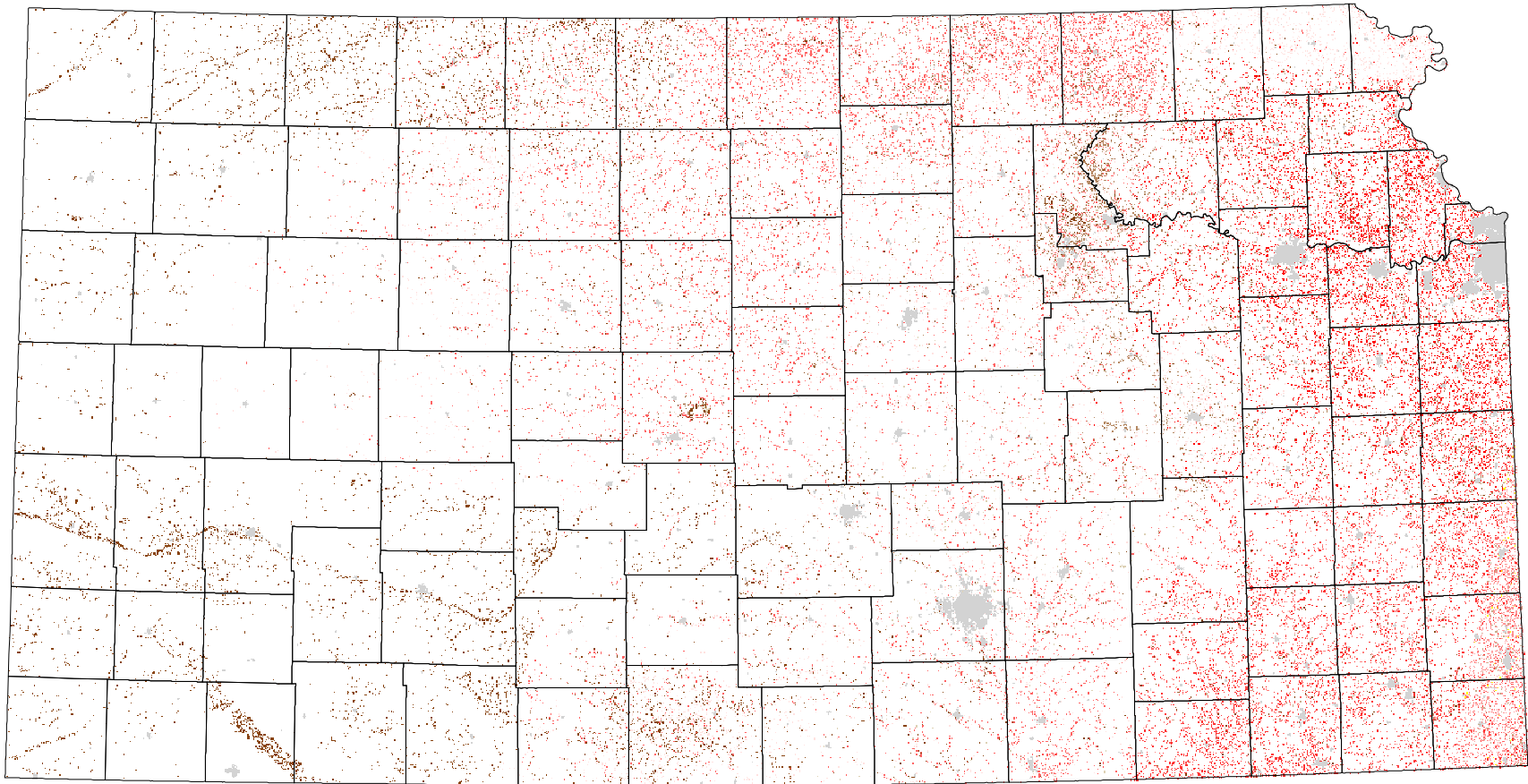
 *Birds of Kansas,*
Horned Lark

 Range from Johnsgard, 1998
The Birds of Nebraska

Habitat

All shaded counties will be included in the possible distribution of the species.

House Wren



* 30 m edge