

# Habitat Model for Species: Great Crested Flycatcher

Alpha Code: GCFL Status: Breeding

[Distribution Map](#)

[Habitat Map](#)

## Landcover Category

### **0 - Comments**

Johnston, 1971

Baicich and Harrison, 1997

Robbins et al., 1989 Area (ha) at which probability is maximum - 72 and 50% - 0.3 (suggested minimum)

[KS GAP]

60 m edge of selected forests (1-7,50,51).

[Reviewer]

### **Habitat Restrictions**

### **Comments**

Foraged in forest canopy from 50-70 or more feet in forest-edge situations.

Nest in cavity whether natural or a woodpecker hole in a tree, or an artificial site, such as a pipe, nest-box, or similar cavity.

Busby: Species is scarce in western one-third of the state.

### **01 - Maple-Basswood Forest**

Baicich and Harrison, 1997

Baylor et al., 1983

Fawver, 1947

Stauffer and Best, 1980

Lanyon, 1997

[KS GAP]

60 m edge.

Foraged on woodland edge.

### **02 - Oak-Hickory Forest**

Baicich and Harrison, 1997

Baylor et al., 1983

Fawver, 1947

Stauffer and Best, 1980

Kahl et al., 1985

Shugart and James, 1973

Lanyon, 1997

[KS GAP]

60 m edge.

Foraged at woodland edge.

### **03 - Post Oak-Blackjack Oak Forest**

Baicich and Harrison, 1997

Baylor et al., 1983

Shugart and James, 1973

Lanyon, 1997

[KS GAP]

60 m edge.

Foraged on woodland edge.

### **04 - Pecan Floodplain Forest**

Stewart, 1975

Gray, 1993

[KS GAP]

60 m edge.

### **05 - Ash-Elm-Hackberry Floodplain Forest**

Burns and Dahlgren, 1983

Faanes, 1987

Faanes, 1984

Stewart, 1975

Fawver, 1947

Zimmerman and Tatschl, 1975

Stauffer and Best, 1980

Obermeyer, 1992

Gray, 1993

Zimmerman, 1993

[KS GAP]

60 m edge.

## **06 - Cottonwood Floodplain**

### **Forest**

Stewart, 1975  
Fawver, 1947  
Kahl et al., 1985  
[KS GAP]

60 m edge.

## **07 - Mixed Oak Floodplain**

Stewart, 1975  
Gray, 1989  
Gray, 1993  
Zimmerman, 1993  
[KS GAP]

60 m edge.

## **08 - Bur Oak Floodplain**

### **Woodland**

Baicich and Harrison, 1997  
Baylor et al., 1983  
Stewart, 1975  
Gray, 1989  
Kahl et al., 1985  
Lanyon, 1997  
Gray, 1993  
Platt, 1975  
Zimmerman, 1993

Forage on woodland edge.

## **09 - Mixed Oak Ravine**

Baicich and Harrison, 1997  
Baylor et al., 1983  
Gray, 1989  
Lanyon, 1997  
Gray, 1993  
Zimmerman, 1993

Forage on woodland edge.

## **10 - Post Oak-Blackjack Oak**

### **Woodland**

Baicich and Harrison, 1997  
Baylor et al., 1983  
Shugart and James, 1973  
Lanyon, 1997

Forage on woodland edge.

## **11 - Cottonwood Floodplain**

### **Woodland**

Baicich and Harrison, 1997  
Faanes, 1984  
Baylor et al., 1983  
Stewart, 1975  
Fawver, 1947  
Lanyon, 1997  
Gray, 1993  
Zimmerman, 1993

Forage on woodland edge.

## **14 - Willow Shrubland**

Stewart, 1975

## **15 - Buttonbush (Swamp)**

### **Shrubland**

Stewart, 1975  
Lanyon, 1997

### **36 - Cottonwood Savanna - not mapped**

Stewart, 1975  
Platt, 1975

### **50 - Deciduous Forest-Mined**

#### **Land**

Baicich and Harrison, 1997  
Baylor et al., 1983  
Fawver, 1947  
Lanyon, 1997  
Zimmerman, 1993  
[KS GAP]

Foraged at woodland edge.

60 m edge.

### **51 - Maple Floodplain Forest**

Burns and Dahlgren, 1983  
Stewart, 1975  
Fawver, 1947  
Stauffer and Best, 1980  
[KS GAP]

60 m edge.

### **55 - Deciduous Woodland**

Baicich and Harrison, 1997  
Baylor et al., 1983  
Lanyon, 1997

Foraged on woodland edge.

### **81 - Urban Areas**

Johnston, 1971  
Gillespie, 1924  
Middleton, 1949

Nesting in a piece of hollow fence post on side of  
Nesting in nest box in residential area, nearby  
woodlands.

Nesting on telephone pole.

Nesting in nestbox.

Nesting in nest box near wooded area.

Mousley, 1934  
Bancroft, 1984  
Bancroft, 1981  
Lanyon, 1997

### **91 - Ozark Sandstone Glade / Prairie - not mapped**

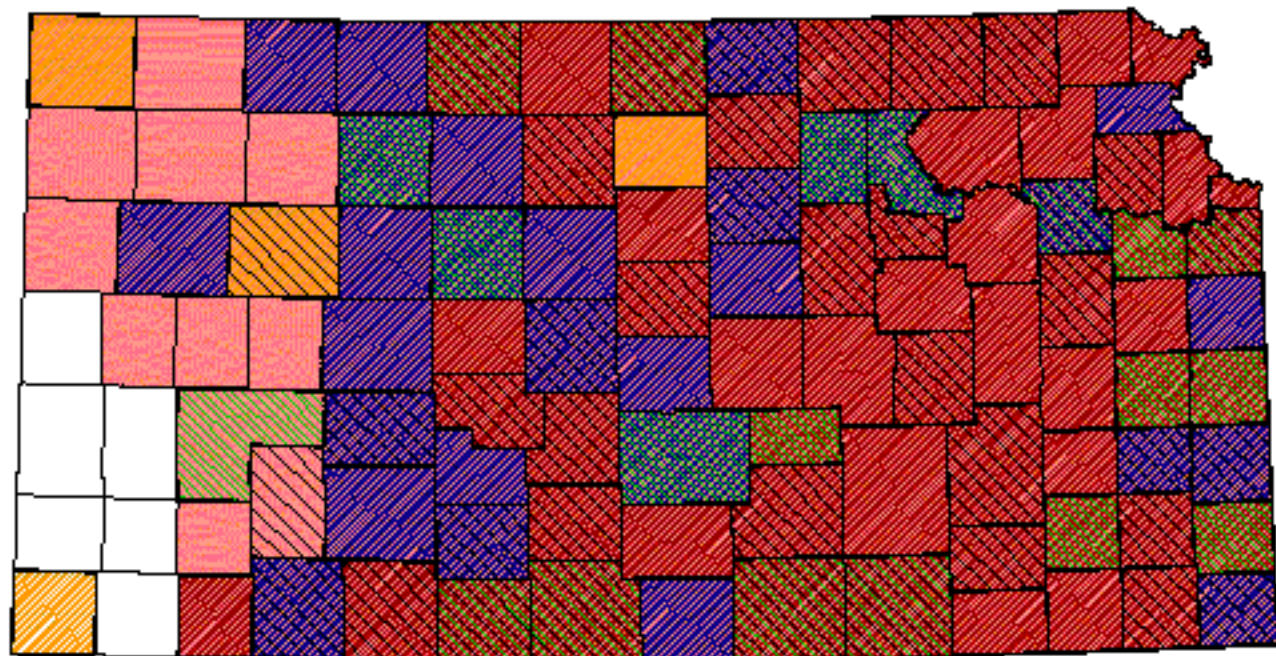
Stauffer and Best, 1980

#### Reference List

1. Baicich, P. J. and C. J. Harrison. 1997. A guide to the nests, eggs, and nestling of North American birds. Second edition. Academic Press, San Diego, California, USA.
2. Bancroft, J. 1981. Great Crested Flycatcher. *Blue Jay* 39(4):226-228.
3. \_\_\_\_\_. 1984. Further observations of Great-crested Flycatchers. *Blue Jay* 42(2):114-116.
4. Baylor, L. M., M. E. Baylor, and F. L. Baylor. 1983. Great Crested Flycatchers in Pennington County. *South Dakota Bird Notes* 35(4):69.
5. Burns, T. L. and R. B. Dahlgren. 1983. Breeding bird use of flooded dead trees in Rathbun Reservoir Iowa. Pages 99-101 *in* Snag habitat management: proceedings of the symposium. General Technical Report RM-99. U.S. Forest Service, Fort Collins, Colorado, USA.
6. Faanes, C. A. 1984. Wooded islands in a sea of prairie. *American Birds* 38(1):3-6.
7. \_\_\_\_\_. 1987. Breeding birds and vegetation structure in western North Dakota wooded draws. *Prairie Naturalist* 19(4):209-220.
8. Fawver, B. J. 1947. Bird population of an Illinois floodplain forest. *Transactions of the Illinois State Academy of Science* 40:178-189.
9. Gillespie, J. A. 1924. Some nestings of the Crested Flycatcher. *Auk* 16:41-44.
10. Gray, L. J. 1989. Correlation between insects and birds in tallgrass prairie riparian habitats. Pages 263-265 *in* T. B. Bragg and J. Stubbendieck, editors. Proceedings of the Eleventh North American Prairie Conference. University of Nebraska Printing, Lincoln, Nebraska, USA.
11. \_\_\_\_\_. 1993. Response of insectivorous birds to emerging aquatic insects in riparian habitats of a tallgrass prairie stream. *American Midland Naturalist* 129:288-300.
12. Johnston, D. W. 1971. Niche relationships among some deciduous forest flycatchers. *Auk* 88:805-814.
13. Kahl, R. B., T. S. Baskett, J. A. Ellis, and J. N. Burroughs. 1985. Characteristics of summer habitats of selected nongame birds in Missouri. University of Missouri Agriculture Experiment Station Research Bulletin 1056. University of Missouri, Columbia, Missouri, USA.
14. Lanyon, W. E. 1997. Great Crested Flycatcher. A. Poole and F. Gill, editors. *The Birds of North America*. No. 300. The American Ornithologists' Union and The Academy of Natural Sciences, Philadelphia, Pennsylvania, USA.
15. Middleton, R. J. 1949. Northern Crested Flycatcher. *Bird-Banding* 20:150-151.

16. Mousley, H. 1934. A study of the home life of the northern crested flycatcher (*Myiarchus crinitus boreus*). *Auk* 51:207-216.
17. Obermeyer, B. 1992. Effect of logging on breeding bird diversity in riparian forests on Fall River Wildlife Area. *Kansas Ornithological Society Bulletin* 43(3):21-27.
18. Platt, D. R. 1975. Breeding birds of Sand Prairie Natural History Reservation, Harvey County, Kansas. *American Birds* 29(6):1146-1151.
19. Robbins, C. S., D. K. Dawson, and B. A. Dowell. 1989. Habitat area requirements of breeding forest birds of the Middle Atlantic States. *Wildlife Monographs* 103:1-34.
20. Shugart, H. H., Jr. and D. James. 1973. Ecological succession of breeding bird populations in northwestern Arkansas. *Auk* 90:62-77.
21. Stauffer, D. F. and L. B. Best. 1980. Habitat selection by birds of riparian communities: evaluating effects of habitat alterations. *Journal of Wildlife Management* 44(1):1-15.
22. Stewart, R. E. 1975. *Breeding birds of North Dakota*. Harrison Smith, Lund Press, Minneapolis, Minnesota, USA.
23. Zimmerman, J. L. 1993. *The Birds of Konza*. University Press of Kansas, Lawrence, Kansas, USA.
24. Zimmerman, J. L. and J. L. Tatschl. 1975. Floodplain birds of Weston Bend, Missouri River. *Wilson Bulletin* 87(2):196-208.

# Great-crested Flycatcher



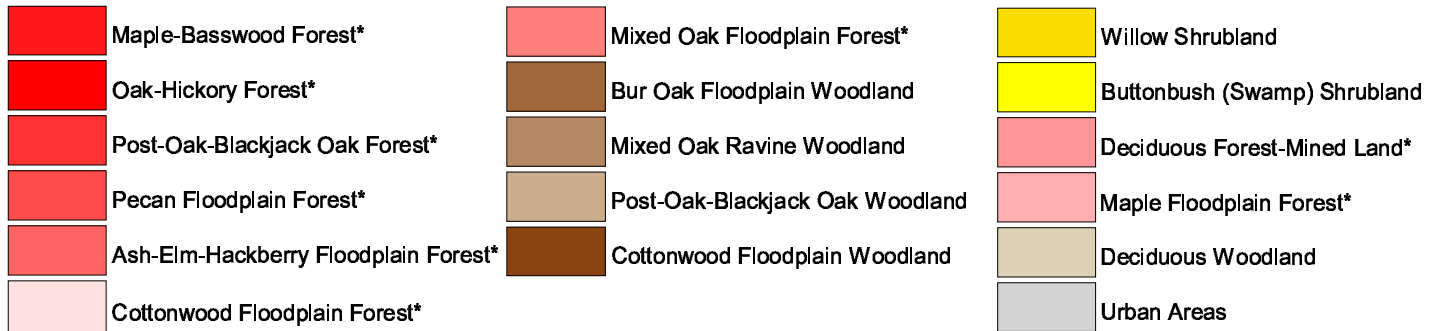
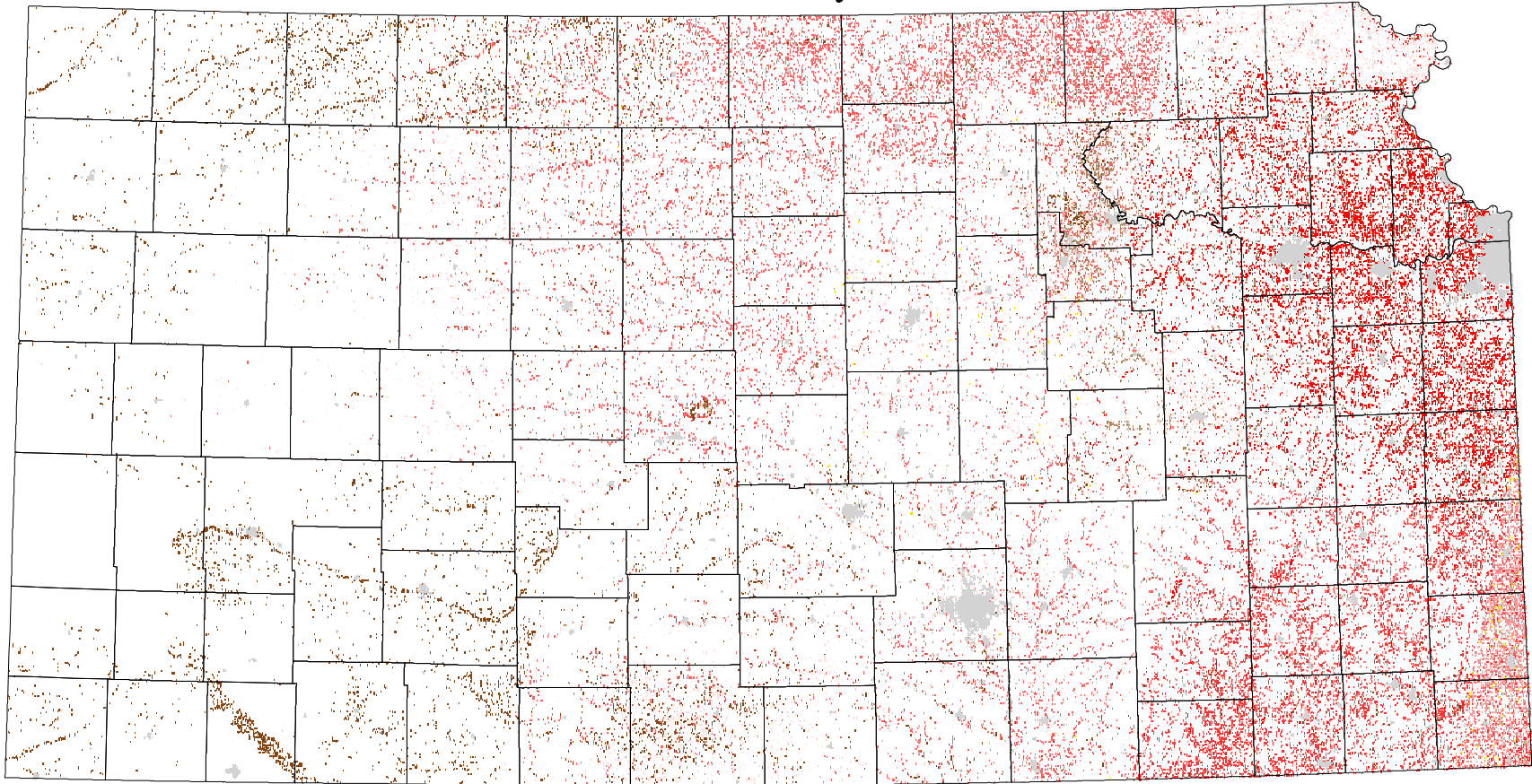
## Kansas Breeding Bird Atlas

- |                    |                                     |                              |
|--------------------|-------------------------------------|------------------------------|
| Confirmed Breeding | Breeding Bird Survey                | Range from Johnsgard, 1998   |
| Probable Breeding  | <i>Birds of Kansas, Horned Lark</i> | <i>The Birds of Nebraska</i> |
| Possible Breeding  |                                     |                              |

### Habitat

All shaded counties will be included in the possible distribution of the species.

# Great-crested Flycatcher



\* 60 m edge