

Habitat Model for Species: Gray Catbird

Alpha Code: GRCA Status: Breeding

[Distribution Map](#)

[Habitat Map](#)

Landcover Category

0 - Comments

Cable et al., 1992
Stauffer and Best, 1986

Nickell, 1965

Renken and Dinsmore, 1987

Zimmerman, 1993

James, 1971

Yahner, 1982
Kahl et al., 1985

Cimprich and Moore, 1995

[KS GAP]

Map 30 m edge of all forest and woodland habitat.

01 - Maple-Basswood Forest

Stauffer and Best, 1980
Cimprich and Moore, 1995
[KS GAP]

edge
30 m edge.

02 - Oak-Hickory Forest

Stauffer and Best, 1980
Gates and Gysel, 1978
Gates and Gysel, 1978
Shugart and James, 1973
Nickell, 1965
Cimprich and Moore, 1995
[KS GAP]

edge
edge
edge
30 m edge.

03 - Post Oak-Blackjack Oak Forest

Cimprich and Moore, 1995
[KS GAP]

edge
30 m edge.

04 - Pecan Floodplain Forest

Cimprich and Moore, 1995
[KS GAP]

edge
30 m edge.

05 - Ash-Elm-Hackberry Floodplain Forest

Stauffer and Best, 1980
Faanes, 1987
Cimprich and Moore, 1995
[KS GAP]

edge
30 m edge.

Comments

Found only in windbreaks larger than 4 ha. nest characteristics; separated from Indigo Bunting by increased nest and support-structure height and support-limb diameter and from Northern Cardinal by more cover above and below the nest.

hedgerows along stone walls, paths and roads. Abandoned house sites.

found in idle mixed prairie, attracted by chokecherry and silverberry patches.

Flint Hills Tallgrass Prairie; in rock outcrop areas (not mappable)

found in shrubs and low trees based on principal component analysis.

shelterbelt

Glaciated and Loess Hills Tallgrass Prairies; old field or brushy, overgrown grassland (not mappable)

Most abundant in shrub-sapling-stage successional habitats. Also found in forest edges and clearings, roadsides, fencerows, abandoned farmland and home sites, pine plantations, streamsides, and some residential areas.

4 nests found were located within 7 m of edge.

cutover area with many saplings

06 - Cottonwood Floodplain

Forest

Zimmerman and Tatschl, 1975

Slack, 1973

Kahl et al., 1985

Cimprich and Moore, 1995

[KS GAP]

edge
edge
30 m edge.

07 - Mixed Oak Floodplain

Zimmerman, 1993

upper ends of forest

Cimprich and Moore, 1995

[KS GAP]

edge
30 m edge.

08 - Bur Oak Floodplain

Woodland

Zimmerman, 1993

upper ends of forest

Kahl et al., 1985

Cimprich and Moore, 1995

[KS GAP]

edge
edge
30 m edge.

09 - Mixed Oak Ravine

Zimmerman, 1993

upper ends of forest

Cimprich and Moore, 1995

[KS GAP]

edge
30 m edge.

10 - Post Oak-Blackjack Oak

Woodland

Cimprich and Moore, 1995

[KS GAP]

edge
30 m edge.

11 - Cottonwood Floodplain

Woodland

Kingery, 1998

Cimprich and Moore, 1995

[KS GAP]

edge
30 m edge.

14 - Willow Shrubland

Nickell, 1965

Kingery, 1998

Brooks, 1971

Cimprich and Moore, 1995

15 - Buttonbush (Swamp)

Shrubland

Nickell, 1965

Platt, 1975

Cimprich and Moore, 1995

42 - Salt Cedar or Tamarisk

Shrubland

Cimprich and Moore, 1995

50 - Deciduous Forest-Mined

Land

Cimprich and Moore, 1995

[KS GAP]

edge
30 m edge.

51 - Maple Floodplain Forest

Stauffer and Best, 1980

Cimprich and Moore, 1995

[KS GAP]

edge
30 m edge.

55 - Deciduous Woodland

Cimprich and Moore, 1995
[KS GAP]

edge
30 m edge.

81 - Urban Areas

DeGraaf and Stihler, 1979

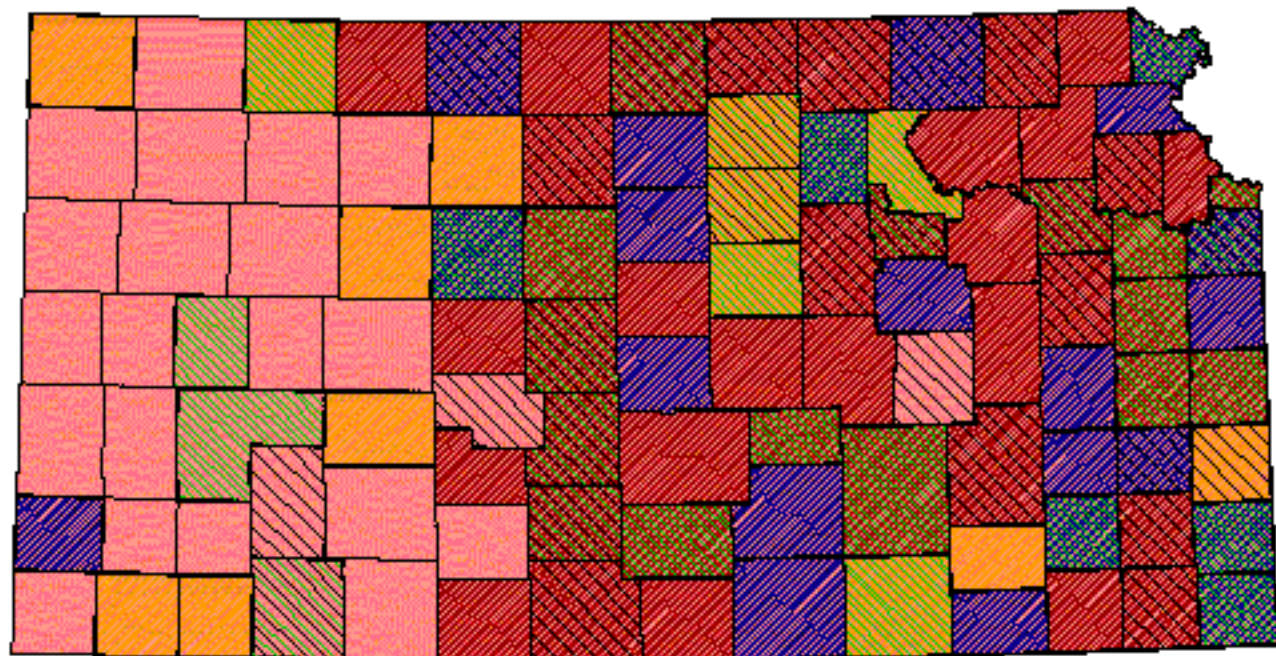
91 - Ozark Sandstone Glade / Prairie - not mapped

Stauffer and Best, 1980







Reference List

1. Brooks, W. S. 1971. Songbird communities-comparison of sedge-forb meadow & willow shrub areas. *Passenger Pigeon* 33(1):39-45.
2. Cable, T. T., R. L. Schroeder, V. Brack, Jr., and P. S. Cook. 1992. Summer bird use of Kansas windbreaks. *Prairie Naturalist* 24(3):175-184.
3. Cimprich, D. A. and F. R. Moore. 1995. Gray Catbird. A. Poole and F. Gill, editors. *The Birds of North America*. No. 167. The American Ornithologists' Union and The Academy of Natural Sciences, Philadelphia, Pennsylvania, USA.
4. DeGraaf, R. M. and C. W. Stihler. 1979. Nesting habitats of five common suburban bird species. *Transactions of the Northeast Section of the Wildlife Society* 36:52-59.
5. Faanes, C. A. 1987. Breeding birds and vegetation structure in western North Dakota wooded draws. *Prairie Naturalist* 19(4):209-220.
6. Gates, J. E. and L. W. Gysel. 1978. Avian nest dispersion and fledging success in field-forest ecotones. *Ecology* 59(5):871-883.
7. James, F. C. 1971. Ordination of habitat relationships among breeding birds. *Wilson Bulletin* 83(3):215-236.
8. Kahl, R. B., T. S. Baskett, J. A. Ellis, and J. N. Burroughs. 1985. Characteristics of summer habitats of selected nongame birds in Missouri. University of Missouri Agriculture Experiment Station Research Bulletin 1056. University of Missouri, Columbia, Missouri, USA.
9. Kingery, H. E. , editor. 1998. *Colorado Breeding Bird Atlas*. Colorado Bird Atlas Partnership, Denver, Colorado, USA.
10. Nickell, W. P. 1965. Habitats, Territory, and nesting of the Catbird. *American Midland Naturalist* 73(2):433-478.
11. Platt, D. R. 1975. Breeding birds of Sand Prairie Natural History Reservation, Harvey County, Kansas. *American Birds* 29(6):1146-1151.
12. Renken, R. B. and J. J. Dinsmore. 1987. Nongame bird communities on managed grasslands in North Dakota. *Canadian Field-Naturalist* 101(4):551-557.
13. Shugart, H. H., Jr. and D. James. 1973. Ecological succession of breeding bird populations in northwestern Arkansas. *Auk* 90:62-77.
14. Slack, R. D. 1973. Breeding biology of the Catbird (*Dumetella carolinensis*). Ohio State University, Columbus, Ohio, USA.
15. Stauffer, D. F. and L. B. Best. 1980. Habitat selection by birds of riparian communities: evaluating effects of habitat alterations. *Journal of Wildlife Management* 44(1):1-15.
16. _____. 1986. Nest-site characteristics of open-nesting birds in riparian habitats in Iowa. *Wilson Bulletin* 98(2):231-242.
17. Yahner, R. H. 1982. Avian nest densities and nest-site selection in farmstead shelterbelts. *Wilson Bulletin* 94(2):156-175.
18. Zimmerman, J. L. 1993. *The Birds of Konza*. University Press of Kansas, Lawrence, Kansas, USA.
19. Zimmerman, J. L. and J. L. Tatschl. 1975. Floodplain birds of Weston Bend, Missouri River. *Wilson Bulletin* 87(2):196-208.

Gray Catbird



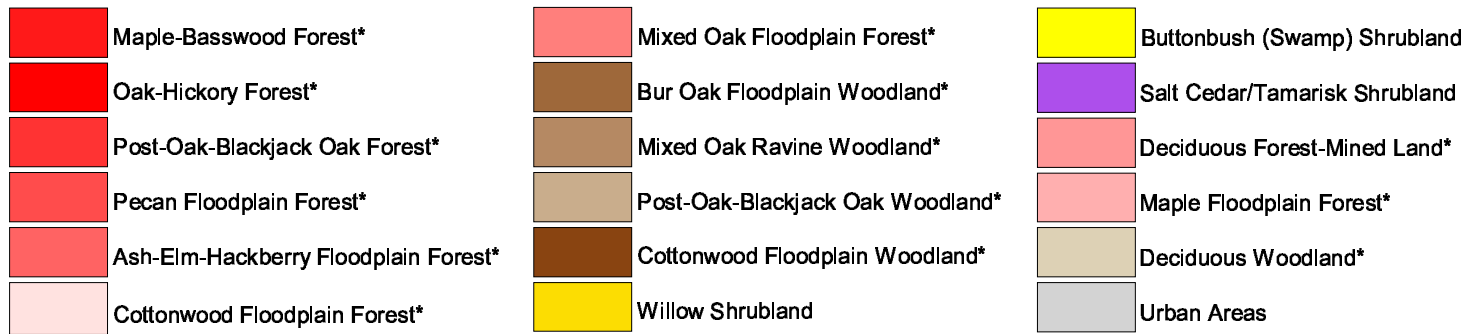
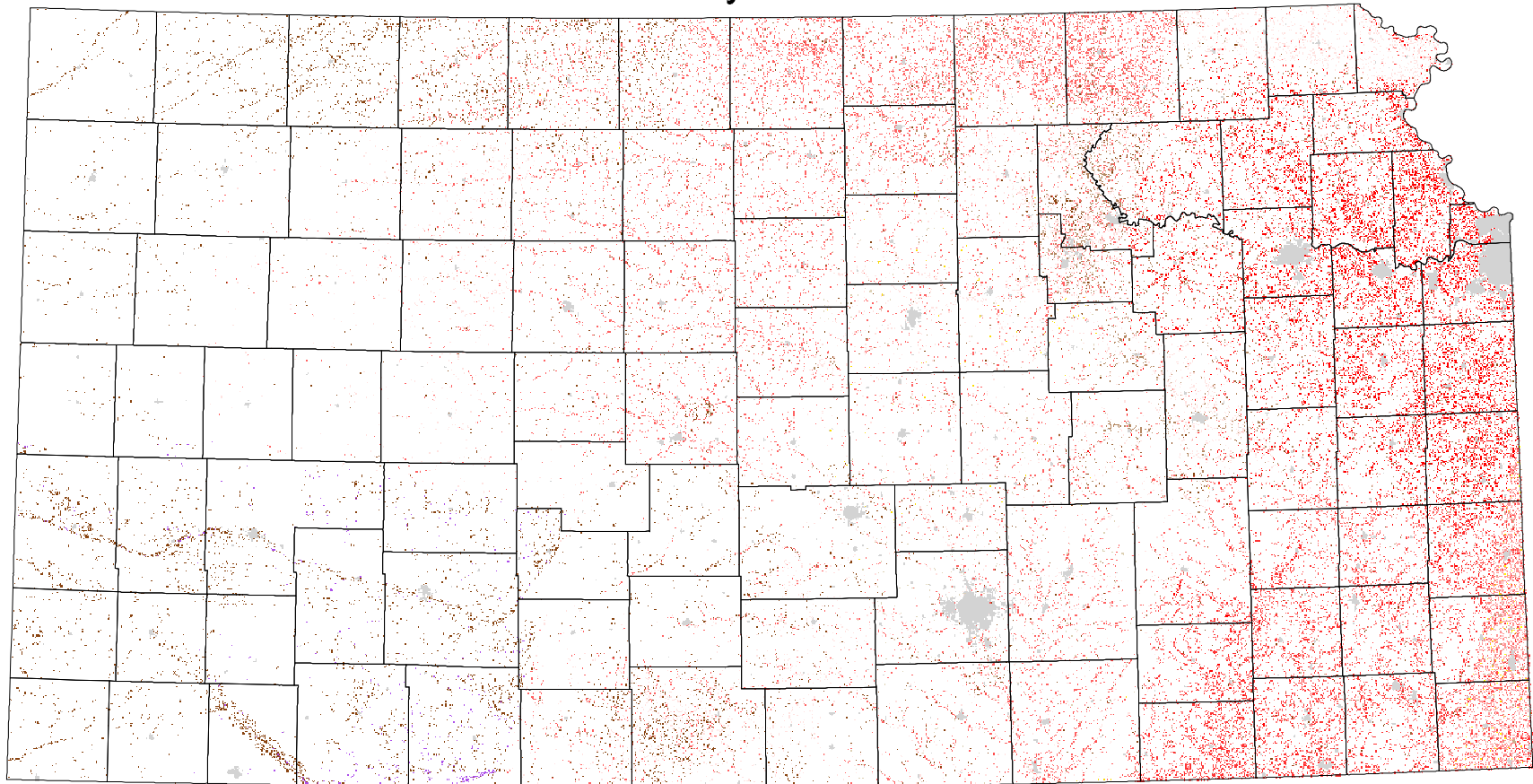
Kansas Breeding Bird Atlas

- | | | |
|--|---|--|
|  Confirmed Breeding |  Breeding Bird Survey |  Range from Johnsgard, 1998
<i>The Birds of Nebraska</i> |
|  Probable Breeding |  <i>Birds of Kansas,</i>
<i>Horned Lark</i> | |
|  Possible Breeding | | |

Habitat

All shaded counties will be included in the possible distribution of the species.

Gray Catbird



* 30 m edge