

Habitat Model for Species: Eastern Kingbird

Alpha Code: **EAKI** Status: **Breeding**

[Distribution Map](#)

[Habitat Map](#)

Landcover Category

0 - Comments

Cable et al., 1992
Murphy, 1996

Habitat Restrictions

[KS GAP] Map edge (30 m) of all deciduous forest and woodland if next to listed open habitats

Comments

Shelterbelts.
Prefers to nest 2m above surrounding vegetation.
Lakeshore nests generally placed 2.5m above water.
Map all of other habitats listed - assume scattered trees present.

01 - Maple-Basswood Forest

Dinsmore et al., 1984
Murphy, 1983
Bent, 1942
[KS GAP]

Woodland edge.
Woodland edge.
30 m edge.

Nests along country road.

02 - Oak-Hickory Forest

Dinsmore et al., 1984
Bent, 1942
[KS GAP]

Woodland edge.
Woodland edge.
30 m edge.

03 - Post Oak-Blackjack Oak Forest

Dinsmore et al., 1984
Bent, 1942
[KS GAP]

Woodland edge.
Woodland edge.
30 m edge.

04 - Pecan Floodplain Forest

[KS GAP]

30 m edge.

05 - Ash-Elm-Hackberry Floodplain Forest

Faanes, 1987 Nesting on woodland edge, next to xeric mixed-grass prairie.
Faanes, 1984 Occurring next to xeric mixed-grass prairie.
MacKenzie and Sealy, 1981 Nesting on edge.
Stauffer and Best, 1980
Murphy, 1996 Nest on edge.
Murphy, 1983
Gray, 1993 Occurring next to tallgrass prairie.
[KS GAP] 30 m edge.

Nests along country road.

06 - Cottonwood Floodplain Forest

Murphy et al., 1997
Murphy, 1996
Murphy, 1983
Tatschl, 1973
[KS GAP]

Map edge only.
Nest on edge.
Adjacent to pastures.
30 m edge.

Nests along country road.

07 - Mixed Oak Floodplain

Murphy, 1996
[KS GAP]

Nest on edge.
30 m edge.

08 - Bur Oak Floodplain Woodland

Dinsmore et al., 1984
Kendeigh, 1941
Murphy, 1996
Bent, 1942
[KS GAP]

Woodland edge.
Occurs next to prairie.
Nest on edge.
Woodland edge.
30 m edge.

09 - Mixed Oak Ravine

Dinsmore et al., 1984
Murphy, 1996
Bent, 1942
[KS GAP]

Woodland edge.
Nest on edge.
Woodland edge.
30 m edge.

10 - Post Oak-Blackjack Oak

Woodland

Dinsmore et al., 1984 Woodland edge.
Bent, 1942 Woodland edge.
[KS GAP] 30 m edge.

11 - Cottonwood Floodplain

Woodland

Faanes, 1984 Occurring next to xeric mixed-grass prairie.
Murphy et al., 1997 Map edge only.
Dinsmore et al., 1984 Woodland edge.
MacKenzie and Sealy, 1981 Nesting on edge.
Kendeigh, 1941 Occurs next to prairie. Nests along country road.
Murphy, 1983
Murphy, 1986
Gray, 1993 Occur next to tallgrass prairie.
Bent, 1942 Woodland edge.
Tatschl, 1973 Adjacent to pastures.
[KS GAP] 30 m edge.

17 - Tallgrass Prairie

Gabrielson, 1914
Gray, 1989
Kahl et al., 1985
Gray, 1993 Occur next to woodland.
Zimmerman, 1993

22 - Mixed Prairie

Faanes, 1987 Only occurring next to green ash-American elm association.
Renken and Dinsmore, 1987

30 - Low or Wet Prairie

Sample and Mossman, 1997
Platt, 1975

36 - Cottonwood Savanna - not mapped

Murphy, 1983 Nests along country road.

40 - Non-native Grassland

Koford, 1999
Temple et al., 1999
Sample and Mossman, 1997
Murphy et al., 1997
Patterson and Best, 1996
Stauffer and Best, 1980
Murphy, 1988
Klute and Robel, 1997
Zimmerman, 1993

41 - CRP

Koford, 1999
Faanes, 1987 Only occurring next to green ash-American elm association.
Johnson and Schwartz, 1993
Patterson and Best, 1996
Gray, 1993 Occur next to woodland.
Klute and Robel, 1997

44 - Cultivated Land

Koford, 1999
Temple et al., 1999
Sample and Mossman, 1997
Patterson and Best, 1996
Zimmerman, 1993

50 - Deciduous Forest-Mined

Land

Murphy et al., 1997 Map edge only.
Dinsmore et al., 1984 Woodland edge.
Murphy, 1996 Nesting on edge. Nests along country road.
Murphy, 1983
Murphy, 1986 Only associated with edge where there is suitable open habitat.
Bent, 1942 Woodland edge.
Tatschl, 1973 Adjacent to pastures.
[KS GAP] 30 m edge.

51 - Maple Floodplain Forest

Stauffer and Best, 1980

Murphy, 1983

[KS GAP]

30 m edge.

Nests along country road.

52 - Evergreen

Forest-Disturbed Land

Tatschl, 1973

Only associated with edge where there is suitable open habitat.

[KS GAP]

30 m edge.

55 - Deciduous Woodland

Temple et al., 1999 Only associated with edge where there is suitable open habitat.

Sample and Mossman, 1997 Only associated with edge where there is suitable open habitat.

Murphy et al., 1997

Map edge only.

Dinsmore et al., 1984

Woodland edge.

Saskatchewan Wetland Conservation Corporation, 1995 Only associated with edge where there is suitable open habitat.

Gabrielson, 1914 Only associated with edge where there is suitable open habitat.

Usually nesting on farm groves (mostly willow, maple, box elder and cottonwood). Also found nesting in the willow growth along the pond.

Kendeigh, 1941

Occurs next to prairie.

Murphy, 1996

Nest on edge.

Murphy, 1983

Nests along country road.

Murphy, 1988

Only associated with edge where there is suitable open habitat.

Klute and Robel, 1997 Only associated with edge where there is suitable open habitat.

Zimmerman, 1993 Only associated with edge where there is suitable open habitat.

Bent, 1942

Woodland edge.

Tatschl, 1973

Adjacent to pastures.

[KS GAP]

30 m edge.

60 - Mixed Prairie-Disturbed

Land

Temple et al., 1999

Murphy et al., 1997

Kendeigh, 1941

Occurs next to prairie.

Zimmerman, 1993

Tatschl, 1973

71 - Weedy Upland

Temple et al., 1999

Sample and Mossman, 1997

Murphy et al., 1997

Murphy, 1988

Klute and Robel, 1997

Zimmerman, 1993

81 - Urban Areas

Baicich and Harrison, 1997

Jackson, 1996

Hamas, 1979

Gabrielson, 1914

Kendeigh, 1941

Murphy, 1996

Murphy, 1988

Bent, 1942

Nest on shrubs, telephone poles, fence posts, buildings, or similar sites. Breeds in open country in trees by water, or shade and orchard trees around Foraging along roadsides in rural Kansas from perches on utility wires and the pasture fence.

Typical inhabitant of farmlands, orchards, roadsides, and seral communities. May also nest along rivers or lake shorelines, on fenceposts and over water.

Nest in parkland, golf courses, urban environments with tall trees and scattered open space.

Often very abundant in city parks, campgrounds, or other mowed areas.

91 - Ozark Sandstone Glade /

Prairie - not mapped

Stauffer and Best, 1980

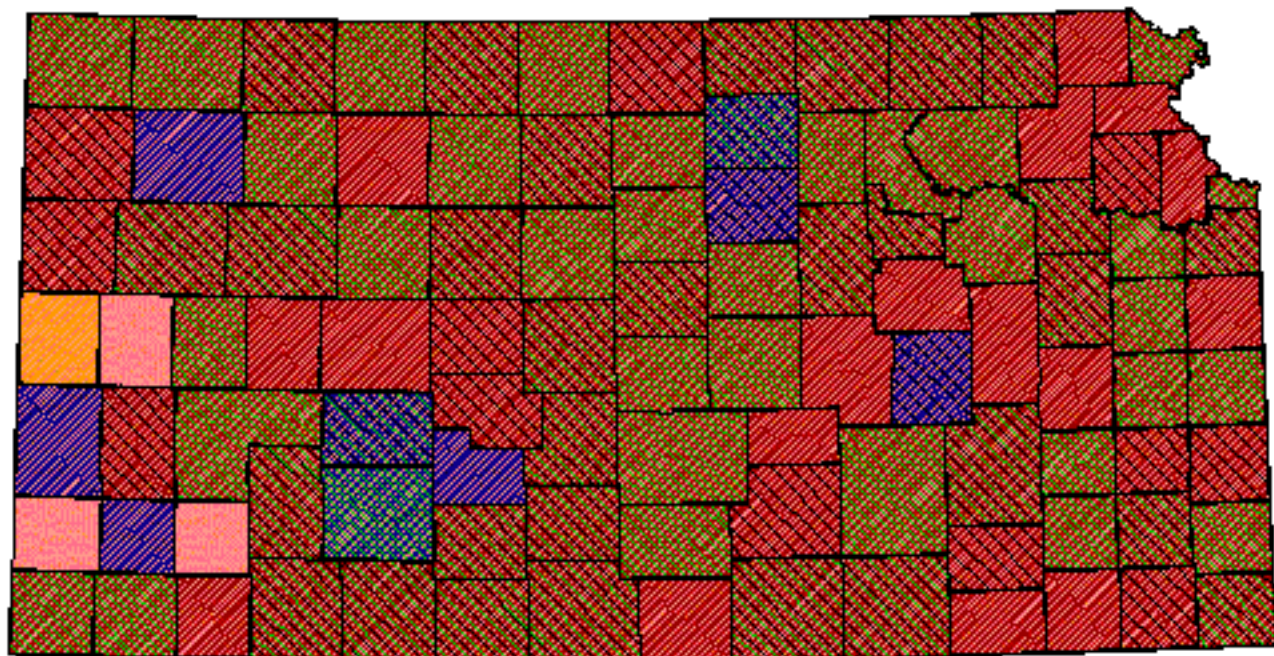
Tatschl, 1973

Reference List

1. Baicich, P. J. and C. J. Harrison. 1997. A guide to the nests, eggs, and nestling of North American birds. Second edition. Academic Press, San Diego, California, USA.
2. Bent, A. C. 1942. Life histories of North American flycatchers, larks, swallows, and their allies. United States National Museum Bulletin. 179:83-91.

3. Cable, T. T., R. L. Schroeder, V. Brack, Jr., and P. S. Cook. 1992. Summer bird use of Kansas windbreaks. *Prairie Naturalist* 24(3):175-184.
4. Dinsmore, J. J., K. H. Thomas, D. Koenig, C. P. Petersen, and M. D. Roosa. 1984. *Iowa Birds*. Iowa State University Press, Ames, Iowa, USA.
5. Faanes, C. A. 1984. Wooded islands in a sea of prairie. *American Birds* 38(1):3-6.
6. _____. 1987. Breeding birds and vegetation structure in western North Dakota wooded draws. *Prairie Naturalist* 19(4):209-220.
7. Gabrielson, I. N. 1914. Breeding birds of a Clay County, Iowa farm. *Wilson Bulletin* 26(2):69-81.
8. Gray, L. J. 1989. Correlation between insects and birds in tallgrass prairie riparian habitats. Pages 263-265 in T. B. Bragg and J. Stubbendieck, editors. *Proceedings of the Eleventh North American Prairie Conference*. University of Nebraska Printing, Lincoln, Nebraska, USA.
9. _____. 1993. Response of insectivorous birds to emerging aquatic insects in riparian habitats of a tallgrass prairie stream. *American Midland Naturalist* 129:288-300.
10. Hamas, M. J. 1979. An unusual nest of the Eastern Kingbird. *Jack-pine Warbler* 57(1):26-27.
11. Jackson, J. A. 1996. Long live the king: the tyrannical nature of the Eastern Kingbird. *Birder's World* 10(1):16-20.
12. Johnson, D. H. and M. D. Schwartz. 1993. The Conservation Reserve Program: habitat for grassland birds. *Great Plains Research* 3(August):273-295.
13. Kahl, R. B., T. S. Baskett, J. A. Ellis, and J. N. Burroughs. 1985. Characteristics of summer habitats of selected nongame birds in Missouri. University of Missouri Agriculture Experiment Station Research Bulletin 1056. University of Missouri, Columbia, Missouri, USA.
14. Kendeigh, S. C. 1941. Birds of a prairie community. *Condor* 43(4):165-174.
15. Klute, D. S. and R. J. Robel. 1997. Will conversion of Conservation Reserve Program (CRP) lands to pasture be detrimental for grassland birds in Kansas? *American Midland Naturalist* 137:206-212.
16. Koford, R. R. 1999. Density and fledging success of grassland birds in Conservation Reserve Program fields in North Dakota and west-central Minnesota. *Studies in Avian Biology* 19:187-195.
17. MacKenzie, D. I. and S. G. Sealy. 1981. Nest site selection in Eastern and Western Kingbirds: a multivariate approach. *Condor* (83):310-321.
18. Murphy, M. T. 1983. Nest success and nesting habits of Eastern Kingbirds and other flycatchers. *Condor* 85:208-219.
19. _____. 1986. Temporal components of reproductive variability in Eastern Kingbirds (*Tyrannus tyrannus*). *Ecology* 67(6):1483-1492.
20. _____. 1988. Comparative reproductive biology of Kingbirds (*Tyrannus spp.*) in eastern Kansas. *Wilson Bulletin* 100(3):357-376.
21. _____. 1996. Eastern Kingbird. A. Poole and F. Gill, editors. *The Birds of North America*. No. 253. The American Ornithologists' Union and The Academy of Natural Sciences, Philadelphia, Pennsylvania, USA.
22. Murphy, M. T., C. L. Cummings, and M. S. Palmer. 1997. Comparative analysis of habitat selection, nest site and nest success by Cedar Waxwings (*Bombycilla cedrorum*) and Eastern Kingbirds (*Tyrannus tyrannus*). *American Midland Naturalist* 138:344-356.
23. Patterson, M. P. and L. B. Best. 1996. Bird abundance and nesting success in Iowa CRP fields: The importance of vegetation structure and composition. *American Midland Naturalist* 135:135-167.
24. Platt, D. R. 1975. Breeding birds of Sand Prairie Natural History Reservation, Harvey County, Kansas. *American Birds* 29(6):1146-1151.
25. Renken, R. B. and J. J. Dinsmore. 1987. Nongame bird communities on managed grasslands in North Dakota. *Canadian Field-Naturalist* 101(4):551-557.
26. Sample, D. W. and M. J. Mossman. 1997. *Managing habitat for grassland birds: a guide for Wisconsin*. Bureau of Integrated Science Services, Madison, Wisconsin, USA.
27. Saskatchewan Wetland Conservation Corporation. 1995. *Songbirds of Saskatchewan*. Saskatchewan Wetland Conservation Corporation, Regina, Saskatchewan, Canada.
28. Stauffer, D. F. and L. B. Best. 1980. Habitat selection by birds of riparian communities: evaluating effects of habitat alterations. *Journal of Wildlife Management* 44(1):1-15.
29. Tatschl, J. L. 1973. Niche exploitation among three closely related flycatchers in Kansas. Dissertation, Kansas State University, Manhattan, Kansas, USA.
30. Temple, S. A., B. M. Fevold, L. K. Paine, D. J. Undersander, and D. W. Sample. 1999. Nesting birds and grazing cattle: accommodating both on Midwestern pastures. *Studies in Avian Biology* 19:196-202.
31. Zimmerman, J. L. 1993. *The Birds of Konza*. University Press of Kansas, Lawrence, Kansas, USA.

Eastern Kingbird



Kansas Breeding Bird Atlas

Confirmed Breeding

Probable Breeding

Possible Breeding

Breeding Bird Survey

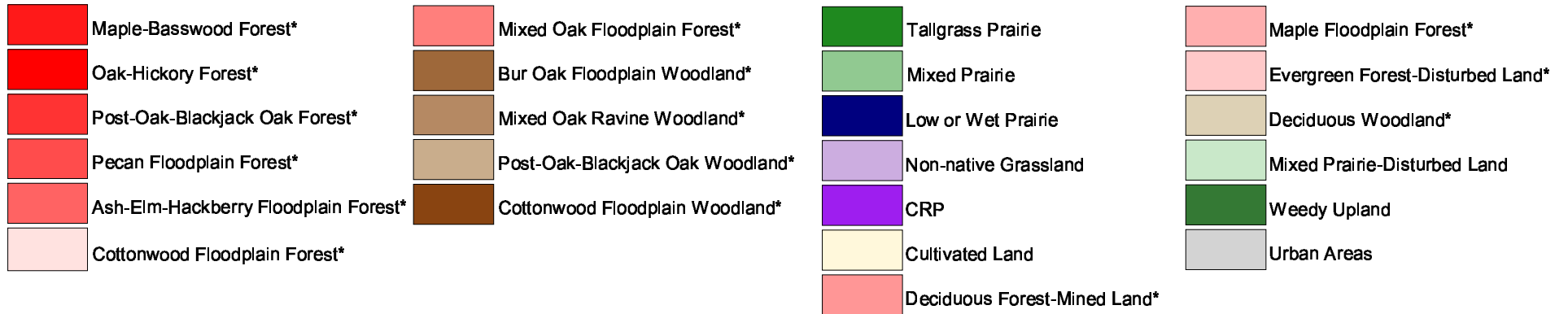
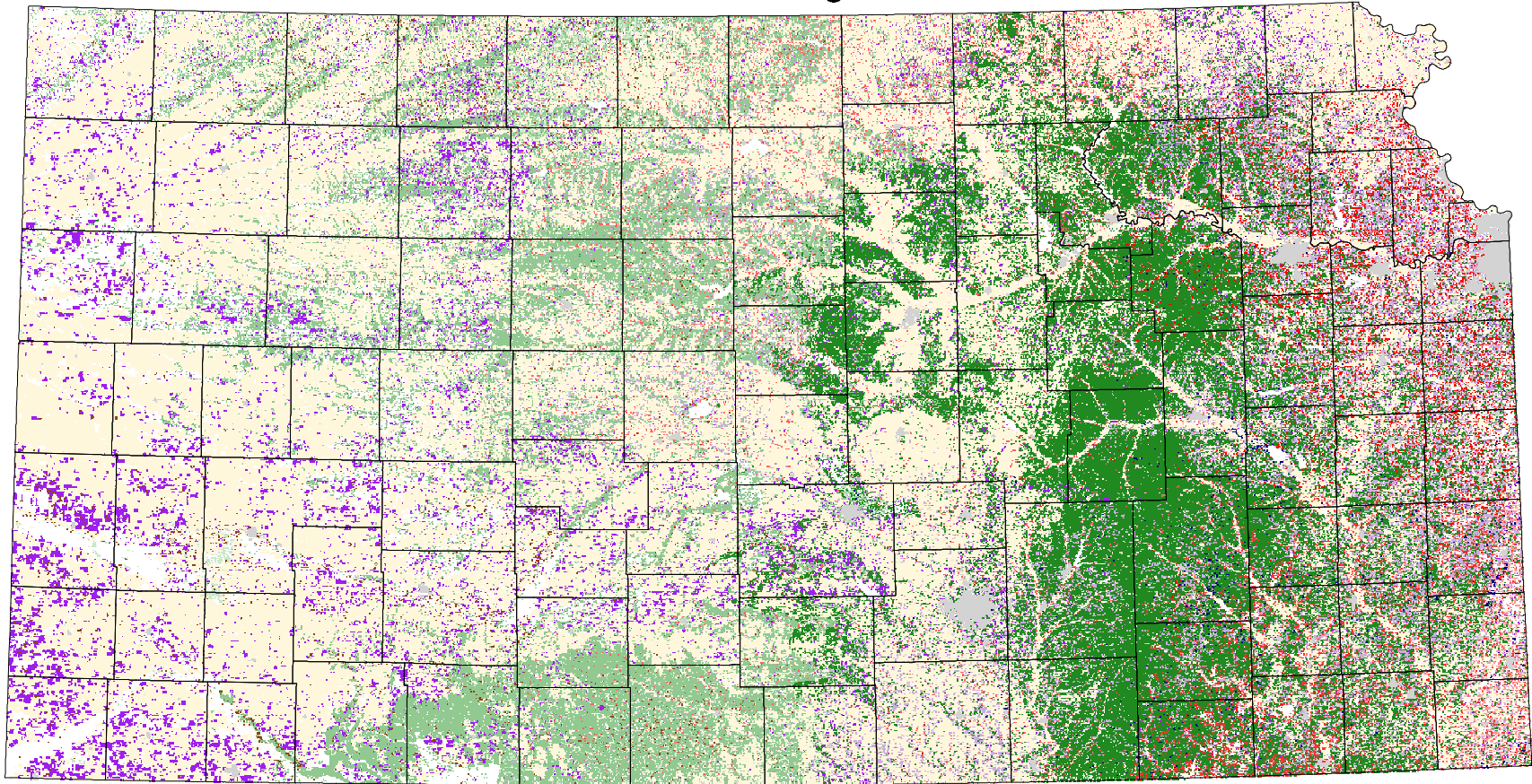
*Birds of Kansas,
Horned Lark*

Range from Johnsgard, 1998
The Birds of Nebraska

Habitat

All shaded counties will be included in the possible distribution of the species.

Eastern Kingbird



* 30 m edge