

Habitat Model for Species: Brown Thrasher

Alpha Code: BRTH Status: Breeding

[Distribution Map](#)

[Habitat Map](#)

Landcover Category

0 - Comments

Cade, 1986

Stauffer and Best, 1980

Erwin, 1935
Partin, 1977

Snow, 1994
Stauffer and Best, 1986

Basore et al., 1986

Haas, 1995
Renken and Dinsmore, 1987

King, 1991
Kahl et al., 1985
Cable et al., 1992
James, 1971

Yahner, 1982
Cavitt and Haas, 2000

[KS GAP] Map 30 m edge of forests and woodlands (1-11, 42, 50-55).

01 - Maple-Basswood Forest

Stauffer and Best, 1980
Cavitt and Haas, 2000
[KS GAP] edge
30 m edge.

02 - Oak-Hickory Forest

Stauffer and Best, 1980
Kahl et al., 1985
Cavitt and Haas, 2000
[KS GAP] edge
edge
30 m edge.

03 - Post Oak-Blackjack Oak Forest

Cavitt and Haas, 2000
[KS GAP] edge
30 m edge.

04 - Pecan Floodplain Forest

Cavitt and Haas, 2000
[KS GAP] edge
30 m edge.

05 - Ash-Elm-Hackberry Floodplain Forest

Stauffer and Best, 1980
Haas, 1995
Faanes, 1987
Cavitt and Haas, 2000
[KS GAP] edge
edge
30 m edge. draws

06 - Cottonwood Floodplain Forest

Kahl et al., 1985
Cavitt and Haas, 2000
[KS GAP] edge
edge
30 m edge.

Habitat Restrictions

Comments

Highest densities occur in dense woody vegetation associated with shrub thickets, hedgerows, forest edges, or midsuccessional forests.
Recommended minimum mean width of wooded area = 40 m.
nesting in shrubs on college campus.
Brushy thickets, including rosebushes, appear to be the choice nesting habitat.
Reports of ground nests in Oklahoma.
nest characteristics; separated from Indigo Bunting by increased nest and support-structure height and support-limb diameter and from Northern Cardinal by more cover above and below the nest.
Nested in herbaceous strip cover in crop fields; mean nest density per 100 ha = 1.
shelterbelts
found in idle (not grazed, burned, or mowed for 5-19 years) mixed prairie, attracted by chokecherry and silverberry patches.
present only in CRP with western ragweed.
Old successional fields with many shrubs used >85% of the windbreaks in south central found in places having high ground cover and few trees based on principal component analysis.
shelterbelt
Inhabits thickets and hedgerows in deciduous forest clearings and forest edge. Common breeder in shelterbelts and woody draws in the Great Plains.

07 - Mixed Oak Floodplain

Zimmerman, 1993

Cavitt and Haas, 2000
[KS GAP]

edge
30 m edge.

significantly less common in the gallery forest than in attenuated gallery forest

08 - Bur Oak Floodplain Woodland

Zimmerman, 1993

Cavitt and Haas, 2000
[KS GAP]

edge
30 m edge.

significantly less common in the gallery forest than in attenuated gallery forest

09 - Mixed Oak Ravine

Zimmerman, 1993

Cavitt and Haas, 2000
[KS GAP]

edge
30 m edge.

significantly less common in the gallery forest than in attenuated gallery forest

10 - Post Oak-Blackjack Oak Woodland

Cavitt and Haas, 2000
[KS GAP]

edge
30 m edge.

11 - Cottonwood Floodplain Woodland

Platt, 1975

Sedgwick and Knopf, 1987

Cavitt and Haas, 2000
[KS GAP]

edge
30 m edge.

14 - Willow Shrubland

Cavitt and Haas, 2000

edge

15 - Buttonbush (Swamp) Shrubland

Platt, 1975

Cavitt and Haas, 2000

edge

17 - Tallgrass Prairie

Zimmerman, 1993

Cink and Lowther, 1989only when shrubs persist (undisturbed); rough-leaved dogwood

Kahl et al., 1985

Cavitt, 1999

well-developed litter layer and some shrubs

with dogwood and plum patches

unburned prairie

especially rock outcrops with rough-leaved dogwood

Lower daily nest survival in burned-grazed prairie than in other treatments.

30 - Low or Wet Prairie

Cink and Lowther, 1989only when shrubs persist (undisturbed); rough-leaved dogwood

40 - Non-native Grassland

Stauffer and Best, 1980

Temple et al., 1999

used for foraging, trees need to be near

Nesting on ungrazed and rotationally grazed sites.

42 - Salt Cedar or Tamarisk Shrubland

Cavitt and Haas, 2000
[KS GAP]

edge
30 m edge.

50 - Deciduous Forest-Mined Land

Cavitt and Haas, 2000
[KS GAP]

edge
30 m edge.

51 - Maple Floodplain Forest

Stauffer and Best, 1980

Cavitt and Haas, 2000
[KS GAP]

edge
30 m edge.

52 - Evergreen Forest-Disturbed Land

Cavitt and Haas, 2000
[KS GAP]

edge
30 m edge.

55 - Deciduous Woodland

Cavitt and Haas, 2000
[KS GAP]

edge
30 m edge.

71 - Weedy Upland

Facemire, 1978

Two ground nests

91 - Ozark Sandstone Glade /

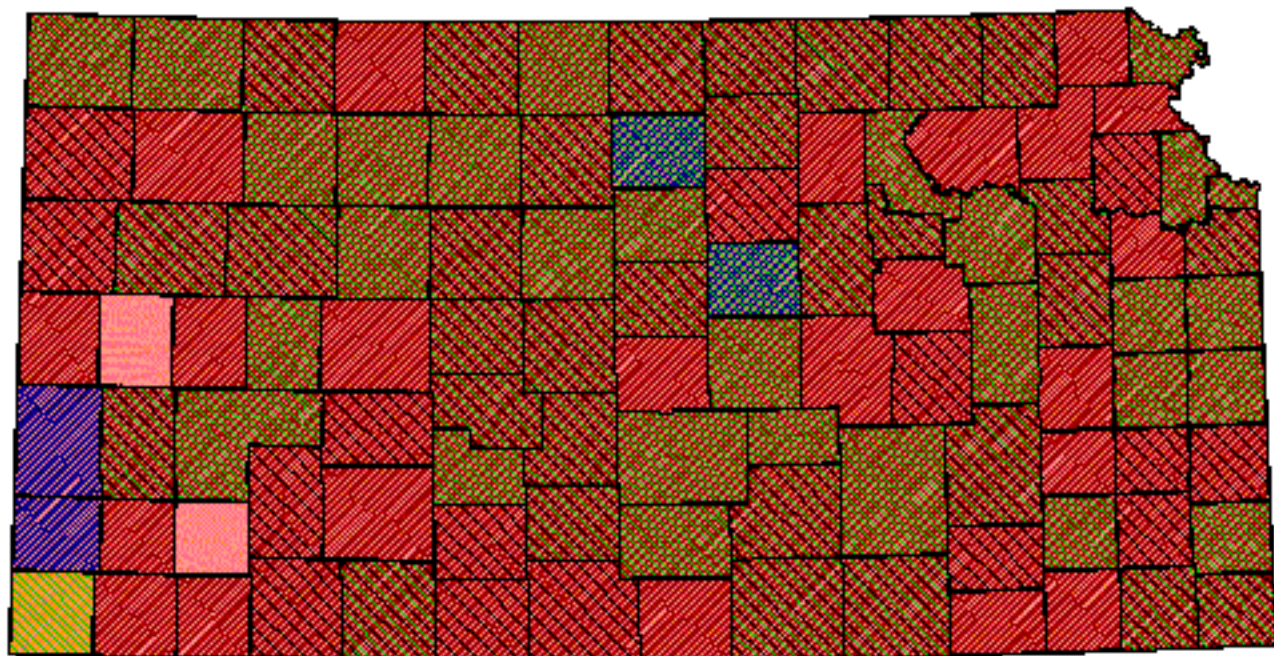
Prairie - not mapped

Stauffer and Best, 1980


Reference List


1. Basore, N. S., L. B. Best, and J. B. Wooley, Jr. 1986. Bird nesting in Iowa no-tillage and tilled cropland. *Journal of Wildlife Management* 50(1):19-28.
2. Cable, T. T., R. L. Schroeder, V. Brack, Jr., and P. S. Cook. 1992. Summer bird use of Kansas windbreaks. *Prairie Naturalist* 24(3):175-184.
3. Cade, B. S. 1986. Habitat suitability index model: Brown Thrasher. Biological Report 82(10.118). U. S. Department of the Interior, Fish and Wildlife Service, Washington, D.C., USA.
4. Cavitt, J. F. 1999. Effects of prairie fire and grazing on Brown Thrasher nest predation. *Proceedings of the North American Prairie Conference* 16:112-119.
5. Cavitt, J. F. and C. A. Haas. 2000. Brown Thrasher. A. Poole and F. Gill, editors. *The Birds of North America*. no. 557. The Birds of North America, Inc., Philadelphia, Pennsylvania, USA.
6. Cink, C. L. and P. E. Lowther. 1989. Breeding bird populations of a floodplain tallgrass prairie in Kansas. Pages 259-262 in T. B. Bragg and J. Stubbendieck, editors. *Prairie Pioneers: Ecology, History and Culture*. *Proceedings of the Eleventh North American Prairie Conference*.
7. Erwin, W. G. 1935. Some nesting habits of the Brown Thrasher. *Journal of the Tennessee Academy of Science* 10:179-204.
8. Faanes, C. A. 1987. Breeding birds and vegetation structure in western North Dakota wooded draws. *Prairie Naturalist* 19(4):209-220.
9. Facemire, C. F. 1978. Ground nesting Kansas Thrushes. *Kansas Ornithological Society Bulletin* 29(3):21-22.
10. Haas, C. A. 1995. Dispersal and use of corridors by birds in wooded patches on an agricultural landscape. *Conservation Biology* 9(4):845-854.
11. James, F. C. 1971. Ordination of habitat relationships among breeding birds. *Wilson Bulletin* 83(3):215-236.
12. Kahl, R. B., T. S. Baskett, J. A. Ellis, and J. N. Burroughs. 1985. Characteristics of summer habitats of selected nongame birds in Missouri. University of Missouri Agriculture Experiment Station Research Bulletin 1056. University of Missouri, Columbia, Missouri, USA.
13. King, J. W. 1991. Effects of the Conservation Reserve Program on selected wildlife populations in southeast Nebraska. Thesis, University of Nebraska, Lincoln, Nebraska, USA.
14. Partin, H. 1977. Breeding biology and behavior of the Brown Thrasher (*Toxostoma rufum*). Ohio State University, Columbus, Ohio, USA.
15. Platt, D. R. 1975. Breeding birds of Sand Prairie Natural History Reservation, Harvey County, Kansas. *American Birds* 29(6):1146-1151.
16. Renken, R. B. and J. J. Dinsmore. 1987. Nongame bird communities on managed grasslands in North Dakota. *Canadian Field-Naturalist* 101(4):551-557.
17. Sedgwick, J. A. and F. L. Knopf. 1987. Breeding bird response to cattle grazing of a cottonwood bottomland. *Journal of Wildlife Management* 51(1):230-237.
18. Snow, C. S. 1994. A third Oklahoma Brown Thrasher nest on the ground. *Bulletin of the Oklahoma Ornithological Society* 27(2):16.
19. Stauffer, D. F. and L. B. Best. 1980. Habitat selection by birds of riparian communities: evaluating effects of habitat alterations. *Journal of Wildlife Management* 44(1):1-15.
20. _____. 1986. Nest-site characteristics of open-nesting birds in riparian habitats in Iowa. *Wilson Bulletin* 98(2):231-242.
21. Temple, S. A., B. M. Fevold, L. K. Paine, D. J. Undersander, and D. W. Sample. 1999. Nesting birds and grazing cattle: accommodating both on Midwestern pastures. *Studies in Avian Biology* 19:196-202.
22. Yahner, R. H. 1982. Avian nest densities and nest-site selection in farmstead shelterbelts. *Wilson Bulletin* 94(2):156-175.
23. Zimmerman, J. L. 1993. *The Birds of Konza*. University Press of Kansas, Lawrence, Kansas, USA.


Brown Thrasher





Kansas Breeding Bird Atlas


 Confirmed Breeding

 Probable Breeding

 Possible Breeding

 Breeding Bird Survey

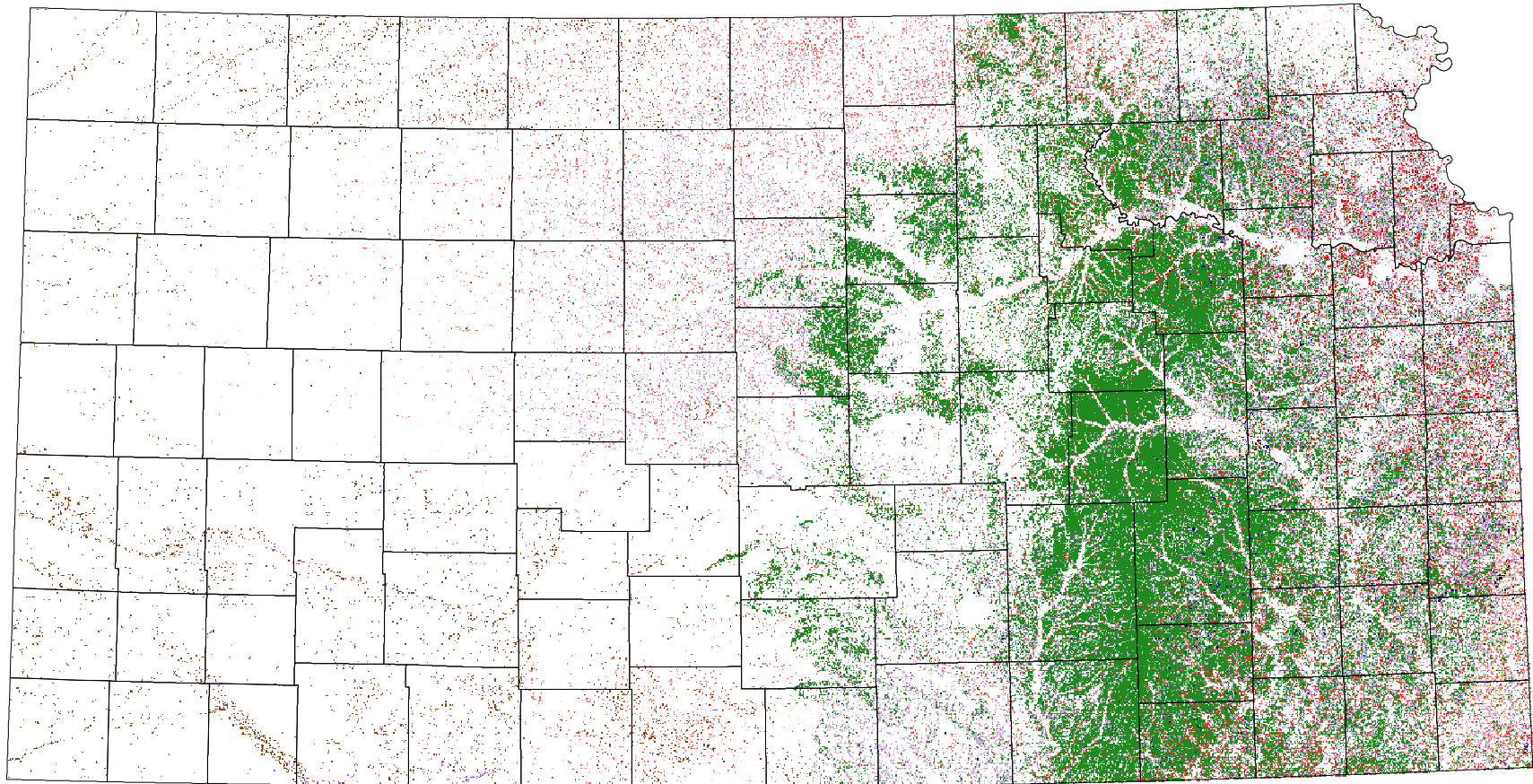
 *Birds of Kansas,*
Horned Lark

 Range from Johnsgard, 1998
The Birds of Nebraska

Habitat

All shaded counties will be included in the possible distribution of the species.

Brown Thrasher



* 30 m edge