

# Habitat Model for Species: Blue-gray Gnatcatcher

Alpha Code: BGGN Status: Breeding

[Distribution Map](#)

[Habitat Map](#)

## Landcover Category

### **0 - Comments**

### Habitat Restrictions

### Comments

Anderson and Robbins, 1981 >50 % frequency of detection in 8-19 ha. size deciduous  
Robbins et al., 1989 Area (ha) at which probability is maximum -3,000+ and 50% -  
15.0 (suggested minimum)

Whitcomb et al., 1981 territories found only in forest islands >70 ha.  
James, 1971

Ellison, 1993

shows remarkable latitude in their choice of habitat in principal component analysis.  
Broad range of wooded habitats from shrublands to mature forests. Generally broad-leaved trees and shrubs; found in riparian and swamp forest, upland deciduous woodland.

[KS GAP]

Map all listed habitats >15 ha.

### **01 - Maple-Basswood Forest**

Stauffer and Best, 1980

Ellison, 1993

### **02 - Oak-Hickory Forest**

Stauffer and Best, 1980

Anderson and Shugart, 1974

Kahl et al., 1985

Shugart and James, 1973

Ellison, 1993

### **03 - Post Oak-Blackjack Oak Forest**

Smith, 1977

Shugart and James, 1973

Ellison, 1993

### **04 - Pecan Floodplain Forest**

Graber et al., 1979

Ellison, 1993

### **05 - Ash-Elm-Hackberry Floodplain Forest**

Graber et al., 1979

Zimmerman and Tatschl, 1975

Obermeyer, 1992

Ellison, 1993

### **06 - Cottonwood Floodplain Forest**

Graber et al., 1979

Ellison, 1993

### **07 - Mixed Oak Floodplain**

Gray, 1993

Graber et al., 1979

Zimmerman, 1993

Ellison, 1993

### **08 - Bur Oak Floodplain Woodland**

Gray, 1993

Graber et al., 1979

Zimmerman, 1993

Kahl et al., 1985

Ellison, 1993

### **09 - Mixed Oak Ravine**

Gray, 1993

Zimmerman, 1993

Ellison, 1993

## **10 - Post Oak-Blackjack Oak**

### **Woodland**

Smith, 1977  
Shugart and James, 1973  
Ellison, 1993

## **11 - Cottonwood Floodplain**

### **Woodland**

Graber et al., 1979  
Ellison, 1993

## **14 - Willow Shrubland**

Ellison, 1993

## **15 - Buttonbush (Swamp)**

### **Shrubland**

Ellison, 1993

## **50 - Deciduous Forest-Mined**

### **Land**

Ellison, 1993

## **51 - Maple Floodplain Forest**

Graber et al., 1979  
Ellison, 1993

## **52 - Evergreen**

### **Forest-Disturbed Land**

Shugart and James, 1973

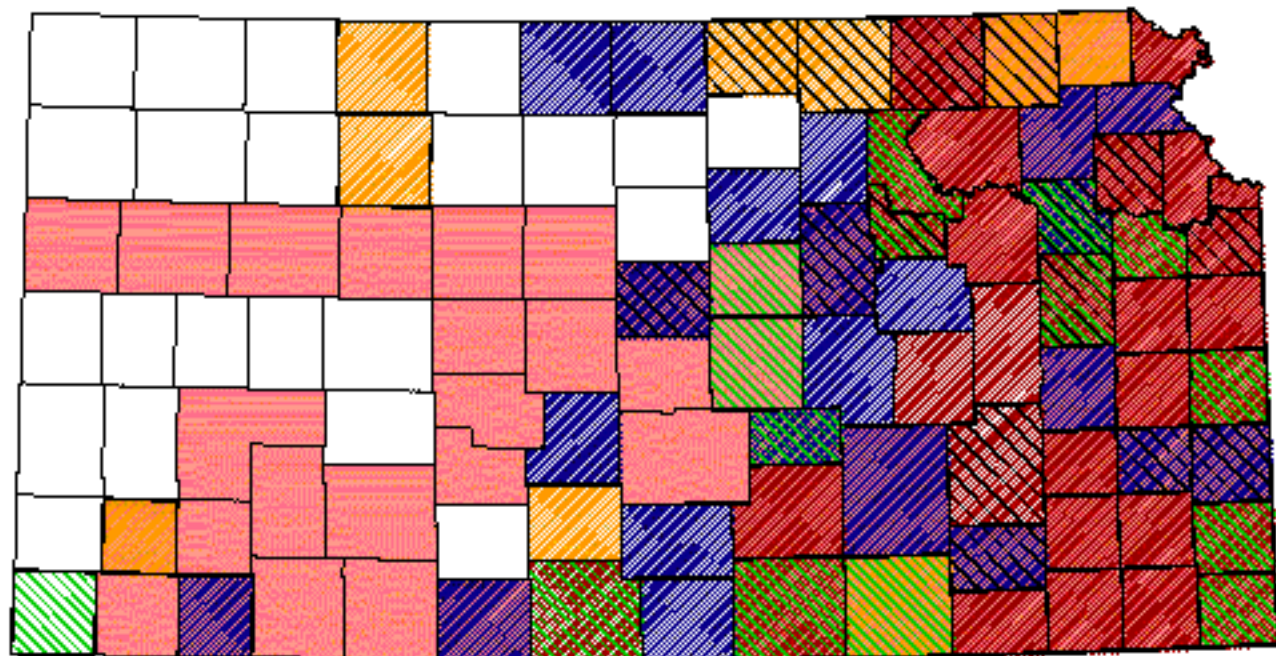
## **55 - Deciduous Woodland**

Ellison, 1993

### Reference List


1. Anderson, S. H. and C. S. Robbins. 1981. Habitat size and bird community management. Transactions of the North American Wildlife and Natural Resources Conference 46:511-520.
2. Anderson, S. H. and H. H. Shugart, Jr. 1974. Habitat selection of breeding birds in an east Tennessee deciduous forest. Ecology 55:828-837.
3. Ellison, W. G. 1993. Blue-gray Gnatcatcher. A. Poole and F. Gill, editors. The Birds of North America. No. 23. The American Ornithologists' Union and The Academy of Natural Sciences, Philadelphia, Pennsylvania, USA.
4. Graber, J. W., R. R. Graber, and E. L. Kirk. 1979. Illinois Birds: Sylviidae. Illinois Natural History Survey Biological Notes No. 110.
5. Gray, L. J. 1993. Response of insectivorous birds to emerging aquatic insects in riparian habitats of a tallgrass prairie stream. American Midland Naturalist 129:288-300.
6. James, F. C. 1971. Ordination of habitat relationships among breeding birds. Wilson Bulletin 83(3):215-236.
7. Kahl, R. B., T. S. Baskett, J. A. Ellis, and J. N. Burroughs. 1985. Characteristics of summer habitats of selected nongame birds in Missouri. University of Missouri Agriculture Experiment Station Research Bulletin 1056. University of Missouri, Columbia, Missouri, USA.
8. Obermeyer, B. 1992. Effect of logging on breeding bird diversity in riparian forests on Fall River Wildlife Area. Kansas Ornithological Society Bulletin 43(3):21-27.
9. Robbins, C. S., D. K. Dawson, and B. A. Dowell. 1989. Habitat area requirements of breeding forest birds of the Middle Atlantic States. Wildlife Monographs 103:1-34.
10. Shugart, H. H., Jr. and D. James. 1973. Ecological succession of breeding bird populations in northwestern Arkansas. Auk 90:62-77.
11. Smith, K. G. 1977. Distribution of summer birds along a forest moisture gradient in an Ozark watershed. Ecology 58:810-819.
12. Stauffer, D. F. and L. B. Best. 1980. Habitat selection by birds of riparian communities: evaluating effects of habitat alterations. Journal of Wildlife Management 44(1):1-15.
13. Whitcomb, R. F., C. S. Robbins, J. F. Lynch, B. L. Whitcomb, M. K. Klimkiewicz, and D. Bystrak. 1981. Effects of forest fragmentation on avifauna of the Eastern Deciduous Forest. Pages 126-205 in R. L. Burgess and D. M. Sharpe, editors. Forest island dynamics in man-dominated landscapes. Springer-Verlag, New York, New York, USA.
14. Zimmerman, J. L. 1993. The Birds of Konza. University Press of Kansas, Lawrence, Kansas, USA.
15. Zimmerman, J. L. and J. L. Tatschl. 1975. Floodplain birds of Weston Bend, Missouri River. Wilson Bulletin 87(2):196-208.

# Blue-gray Gnatcatcher




## Kansas Breeding Bird Atlas

 Confirmed Breeding

 Probable Breeding

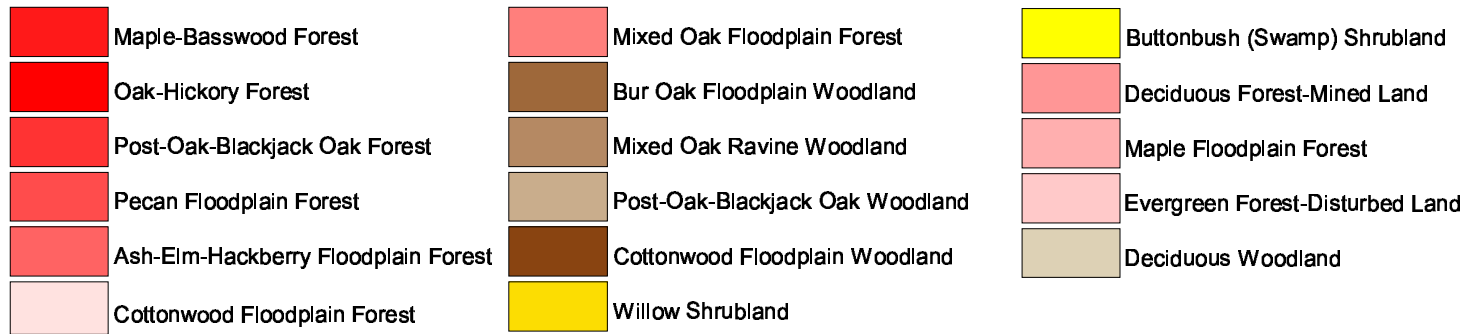
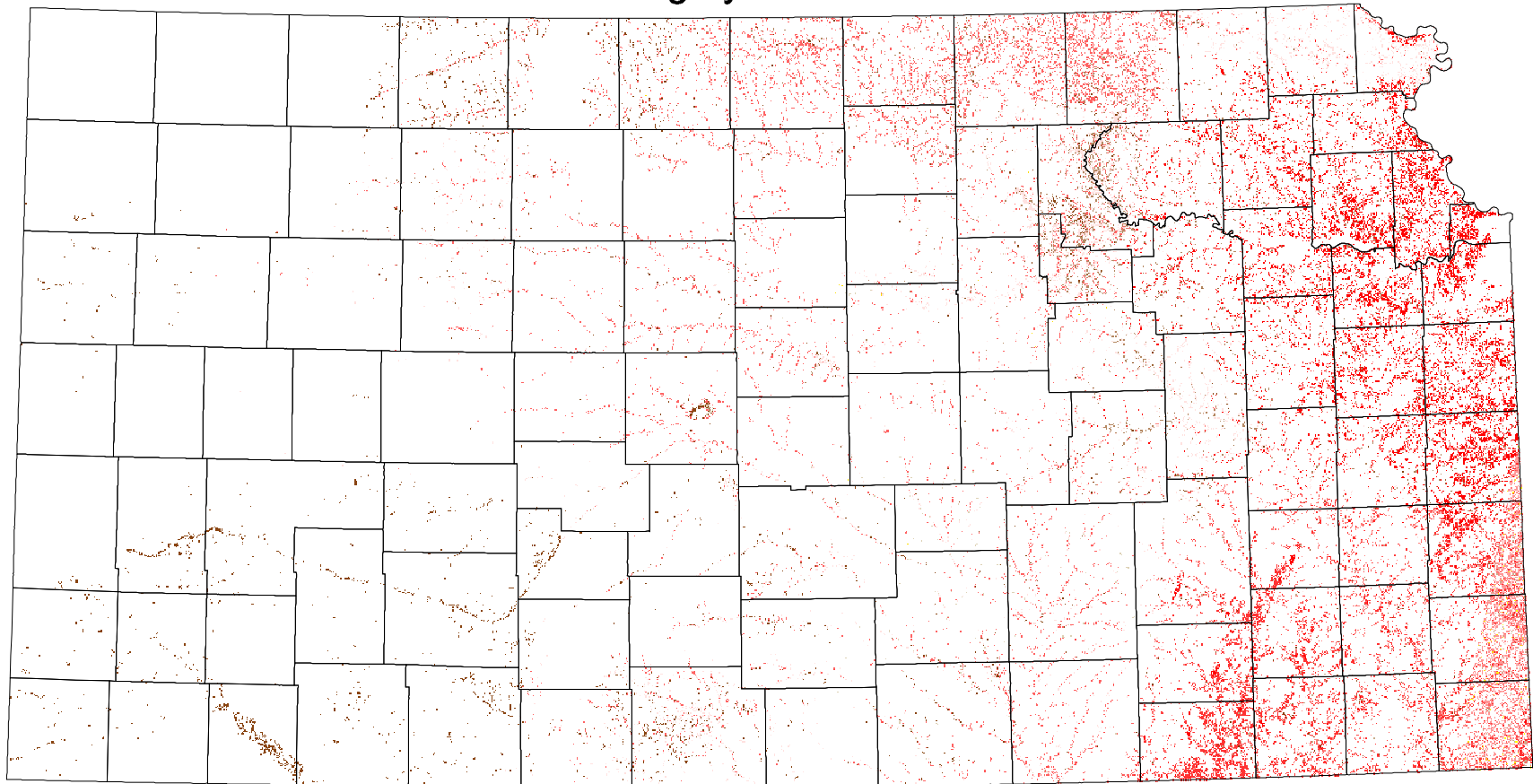
 Possible Breeding

 Breeding Bird Survey

 Birds of Kansas,  
*Horned Lark*

 Range from Johnson, 1888  
*The Birds of Nebraska*

# Blue-gray Gnatcatcher



Minimum habitat area = 15 ha