

Habitat Model for Species: Bell's Vireo

Alpha Code: **BEVI** Status: **Breeding**

[Distribution Map](#)

[Habitat Map](#)

Landcover Category

0 - Comments

Kahl et al., 1985

Overmire, 1963

Kingery, 1998
Nice, 1929
Barlow, 1962

Nolan, 1963

Cink and Lowther, 1989
Parker, 1999

Farley, 1987
James, 1971

Zimmerman, 1993

Thompson and Ely, 1992
Nolan, 1960

Pitelka and Koestner, 1942

Mumford, 1952
Brown, 1993

[KS GAP]

Map 30 m edge of forest/woodland (4-11, 51, and 55).

04 - Pecan Floodplain Forest

Bent, 1950

low, dense thickets

Thompson and Ely, 1992
[KS GAP]

riparian thickets
30 m edge.

05 - Ash-Elm-Hackberry Floodplain Forest

Bent, 1950

low, dense thickets

Thompson and Ely, 1992
[KS GAP]

riparian thickets
30 m edge.

06 - Cottonwood Floodplain Forest

Kahl et al., 1985
Bent, 1950

edge
low, dense thickets

Thompson and Ely, 1992
[KS GAP]

riparian thickets
30 m edge.

Habitat Restrictions

Comments

Old fields. Grasslands with high degree of woody invasion.

Nesting in scattered small American elms in tallgrass prairie. More nests located in ungrazed vs. grazed tracts.

shelterbelt thickets

nested in bushes on university campus.

old field type - cool season grassland with thickets and scattered trees and shrubs. The nest tree or shrub was in every instance situated at the edge of a thicket or isolated from adjacent trees by several feet.

nested in fields with dense cover of blackberry (Rubus spp.), prairie rose (Rosa), herbaceous plants, fairly numerous small trees especially sassafras.

grassland-shrub successional plot.

Konza. Site consisted of tallgrass prairie interspersed with deciduous shrub vegetation concentrated around ephemeral streams and dogwood thickets within tallgrass prairie

open-country birds. Order of vireos listed from open-country to shaded forest: Bell's, Warbling, White-eyed, Yellow-throated, and Red-eyed. Listed from decreasing shrub density: White-eyed, Red-eyed, Bell's, Warbling, and Yellow-throated.

Definitive species of the dogwood thickets associated with rock outcrops and seeps in prairie dogwood in fence rows

more open fields with thickets (possibly avoiding White-eyed Vireos in denser habitats).

grassy area containing scattered patches of shrubby fruit trees and several masses of Rosa and Ribes shrubs.

abandoned fields with shrubs or shrubby borders.

Brushy old field habitats.

preferably along the banks of a river or some small stream.

preferably along the banks of a river or some small stream.

preferably along the banks of a river or some small stream.

07 - Mixed Oak Floodplain

Bent, 1950

low, dense thickets

preferably along the banks of a river or some small stream.

gallery forest

Gray, 1993

Thompson and Ely, 1992

[KS GAP]

riparian thickets

30 m edge.

08 - Bur Oak Floodplain

Woodland

Kahl et al., 1985

edge

Bent, 1950

low, dense thickets

preferably along the banks of a river or some small stream.

gallery forest

Gray, 1993

Thompson and Ely, 1992

Brown, 1993

[KS GAP]

riparian thickets

30 m edge.

09 - Mixed Oak Ravine

Bent, 1950

low, dense thickets

preferably along the banks of a river or some small stream.

gallery forest

Gray, 1993

Thompson and Ely, 1992

Brown, 1993

[KS GAP]

riparian thickets

30 m edge.

10 - Post Oak-Blackjack Oak

Woodland

Brown, 1993

edge

[KS GAP]

30 m edge.

scrub oak

11 - Cottonwood Floodplain

Woodland

Kingery, 1998

thickets

Bent, 1950

low, dense thickets

preferably along the banks of a river or some small stream.

Wiens, 1963

Thompson and Ely, 1992

Brown, 1993

[KS GAP]

riparian thickets

30 m edge.

14 - Willow Shrubland

Hensley, 1950

Bent, 1950

Thompson and Ely, 1992

Brown, 1993

riparian thickets

15 - Buttonbush (Swamp)

Shrubland

Bent, 1950

Thompson and Ely, 1992

Brown, 1993

riparian thickets

42 - Salt Cedar or Tamarisk

Shrubland

Brown and Trosset, 1989

51 - Maple Floodplain Forest

Bent, 1950

low, dense thickets

preferably along the banks of a river or some small stream.

Thompson and Ely, 1992

[KS GAP]

riparian thickets

30 m edge.

55 - Deciduous Woodland

Thompson and Ely, 1992
[KS GAP]

30 m edge.

cut-over osage orange

91 - Ozark Sandstone Glade / Prairie - not mapped

Brown, 1993

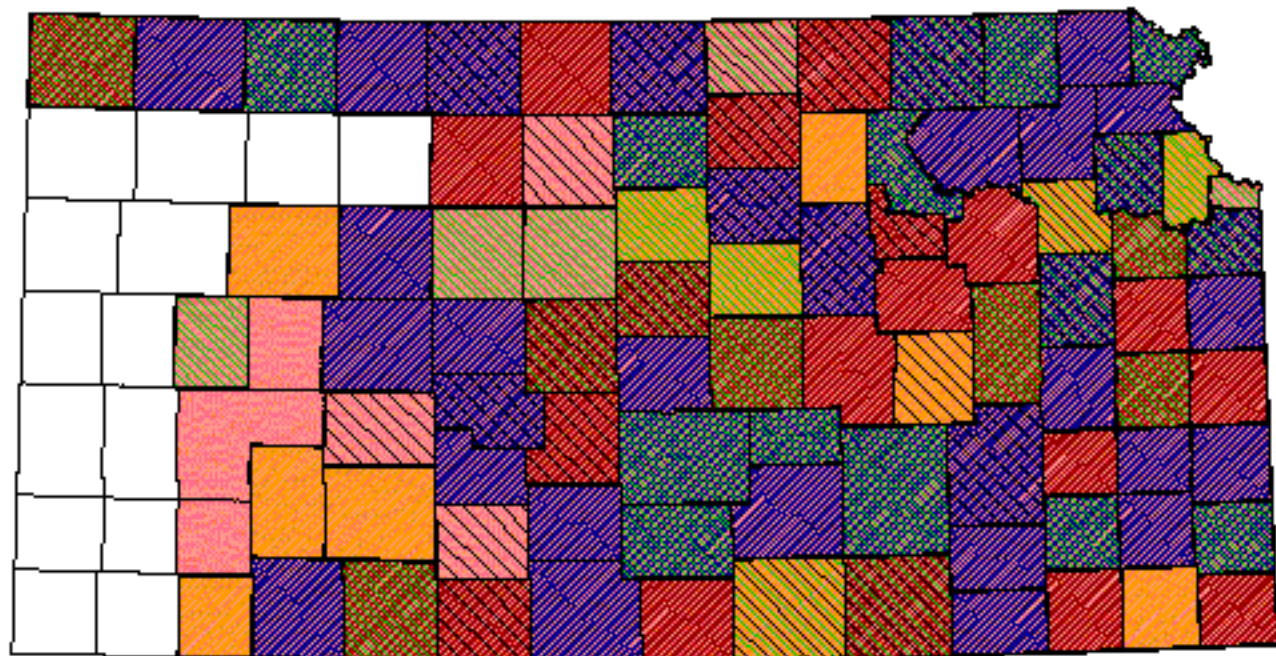
92 - Ozark Limestone Glade - not mapped

Brown, 1993


Reference List


1. Barlow, J. C. 1962. Natural History of the Bell Vireo. University of Kansas Publications, Museum of Natural History 12:241-296.
2. Bent, A. C. 1950. Life Histories of North American Wagtails, Shrikes, Vireos, and their allies. United States National Museum Bulletin. No. 197.
3. Brown, B. T. 1993. Bell's Vireo. A. Poole and F. Gill, editors. The Birds of North America. No. 35. The American Ornithologists' Union and The Academy of Natural Sciences, Philadelphia, Pennsylvania, USA.
4. Brown, B. T. and M. W. Trosset. 1989. Nesting-habitat relationships of riparian birds along the Colorado River in Grand Canyon, Arizona. Southwestern Naturalist 34(2):260-270.
5. Cink, C. L. and P. E. Lowther. 1989. Breeding bird populations of a floodplain tallgrass prairie in Kansas. Pages 259-262 in T. B. Bragg and J. Stubbendieck, editors. Prairie Pioneers: Ecology, History and Culture. Proceedings of the Eleventh North American Prairie Conference.
6. Farley, G. H. 1987. Comparative breeding strategies of two coexisting passerines: Bell's Vireo (*Vireo bellii*) and Bewick's Wren (*Thryomanes bewickii*). Thesis, Kansas State University, Manhattan, Kansas, USA.
7. Gray, L. J. 1993. Response of insectivorous birds to emerging aquatic insects in riparian habitats of a tallgrass prairie stream. American Midland Naturalist 129:288-300.
8. Hensley, M. M. 1950. Notes on the breeding behavior of the Bell's Vireo. Auk 67:243-244.
9. James, F. C. 1971. Ordination of habitat relationships among breeding birds. Wilson Bulletin 83(3):215-236.
10. Kahl, R. B., T. S. Baskett, J. A. Ellis, and J. N. Burroughs. 1985. Characteristics of summer habitats of selected nongame birds in Missouri. University of Missouri Agriculture Experiment Station Research Bulletin 1056. University of Missouri, Columbia, Missouri, USA.
11. Kingery, H. E. , editor. 1998. Colorado Breeding Bird Atlas. Colorado Bird Atlas Partnership, Denver, Colorado, USA.
12. Mumford, R. E. 1952. Bell's Vireo in Indiana. Wilson Bulletin 64(4):224-233.
13. Nice, M. M. 1929. The fortunes of a pair of Bell Vireos. Condor 31(1):13-20.
14. Nolan, V., Jr. 1963. Reproductive success of birds in a deciduous scrub habitat. Ecology 44(2):305-313.
15. Nolan, V., Jr. 1960. Breeding behavior of the Bell Vireo in southern Illinois. Condor 62(4):225-244.
16. Overmire, T. G. 1963. The effects of grazing upon habitat utilization of the Dickcissel (*Spiza americana*) and Bell's Vireo (*Vireo bellii*) in north central Oklahoma. Oklahoma State University, Stillwater, Oklahoma, USA.
17. Parker, T. H. 1999. Responses of Bell's Vireos to brood parasitism by the Brown-headed Cowbird in Kansas. Wilson Bulletin 111(4):499-504.
18. Pitelka, F. A. and E. J. Koestner. 1942. Breeding behavior of Bell's Vireo in Illinois. Wilson Bulletin 54(2):97-106.
19. Thompson, M. C. and C. Ely. 1992. Birds in Kansas: Volume II. Public Education Series No. 12. University of Kansas Museum of Natural History, University Press of Kansas, Lawrence, Kansas, USA.
20. Wiens, J. A. 1963. Aspects of cowbird parasitism in southern Oklahoma. Wilson Bulletin 75(2):130-139.
21. Zimmerman, J. L. 1993. The Birds of Konza. University Press of Kansas, Lawrence, Kansas, USA.


Bell's Vireo





Kansas Breeding Bird Atlas


 Confirmed Breeding

 Probable Breeding

 Possible Breeding

 Breeding Bird Survey

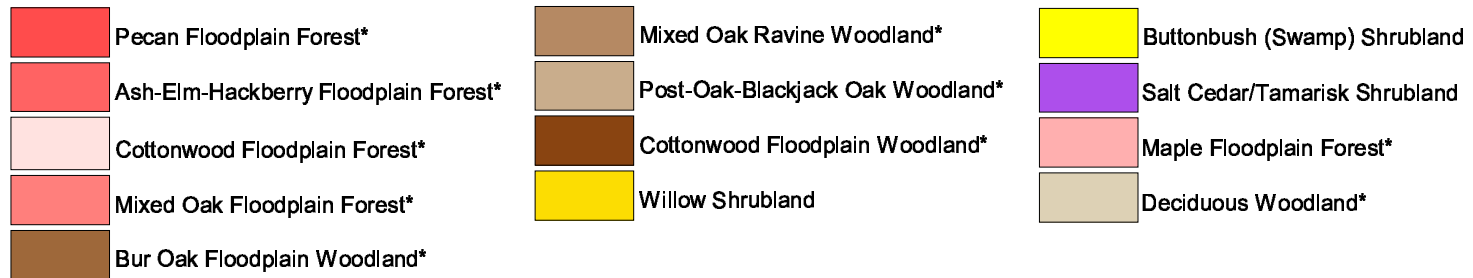
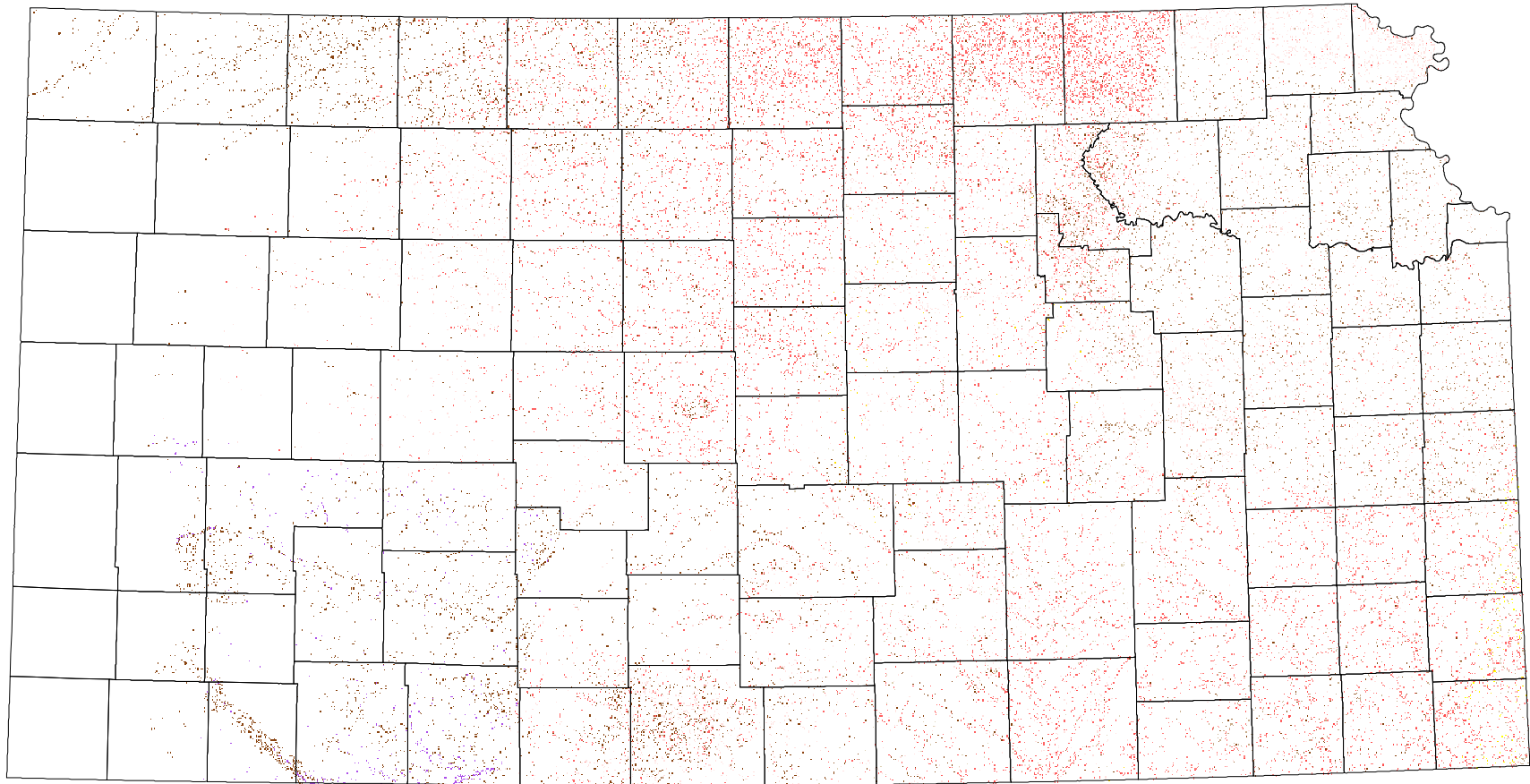
 *Birds of Kansas,*
Horned Lark

 Range from Johnsgard, 1998
The Birds of Nebraska

Habitat

All shaded counties will be included in the possible distribution of the species.

Bell's Vireo



* 30 m edge