

# Habitat Model for Species: Yellow-billed Cuckoo

Alpha Code: YBCU Status: Breeding

[Distribution Map](#)

[Habitat Map](#)

## Landcover Category

### **0 - Comments**

[KS GAP]

Stauffer and Best, 1980

Bent, 1940

Nolan, 1963

Hughes, 1999

### Habitat Restrictions

Map only 30 m edge of all forest types (1-7 and 50-51).

### Comments

Occasionally foraged in open habitats near trees - not included in the model.

woodland thickets, brush-grown lanes, orchards  
Found in scrub habitats (thickets of blackberry and stands of hawthorn in brushy fields in Indiana. No KS landcover associated with this habitat.

Prefers open woodland (read as edge of forest 30 m) with clearings and low, dense, scrubby vegetation; often associated with watercourses.

### **01 - Maple-Basswood Forest**

Stauffer and Best, 1980

Johnston, 1947

Hughes, 1999

edge (not quantified)

Map 30 m edge.

"open woodland"

### **02 - Oak-Hickory Forest**

Stauffer and Best, 1980

Fitch and von Achen, 1973

Kahl et al., 1985

Hughes, 1999

Hughes, 1999

Map 30 m edge.

Map 30 m edge

"open woodland"

"open woodland"

### **04 - Pecan Floodplain Forest**

Fawver, 1947

Hughes, 1999

Map 30 m edge.

"open woodland"

### **05 - Ash-Elm-Hackberry**

#### **Floodplain Forest**

Stauffer and Best, 1980

Fawver, 1947

Hughes, 1999

Map 30 m edge.

"open woodland"

### **06 - Cottonwood Floodplain**

#### **Forest**

Fitch and von Achen, 1973

Hughes, 1999

Map 30 m edge.

"open woodland"

### **07 - Mixed Oak Floodplain**

Zimmerman, 1993

Hughes, 1999

Map 30 m edge.

"open woodland"

### **08 - Bur Oak Floodplain**

#### **Woodland**

Johnston, 1947

Zimmerman, 1993

Hughes, 1999

edge (not quantified)

### **09 - Mixed Oak Ravine**

Zimmerman, 1993

Hughes, 1999

### **11 - Cottonwood Floodplain**

#### **Woodland**

Fitch and von Achen, 1973

Platt, 1975

Hughes, 1999

### **14 - Willow Shrubland**

Hughes, 1999

### **15 - Buttonbush (Swamp)**

#### **Shrubland**

Platt, 1975

### **36 - Cottonwood Savanna - not mapped**

Hughes, 1999

### **50 - Deciduous Forest-Mined Land**

Hughes, 1999

Map 30 m edge.

"open woodland"

### **51 - Maple Floodplain Forest**

Stauffer and Best, 1980

Fawver, 1947

Hughes, 1999

Map 30 m edge.

"open woodland"

### **55 - Deciduous Woodland**

Fitch and von Achen, 1973

Hughes, 1999

### **81 - Urban Areas**

Hughes, 1999

avoids "large" urban areas. Shade trees and gardens.

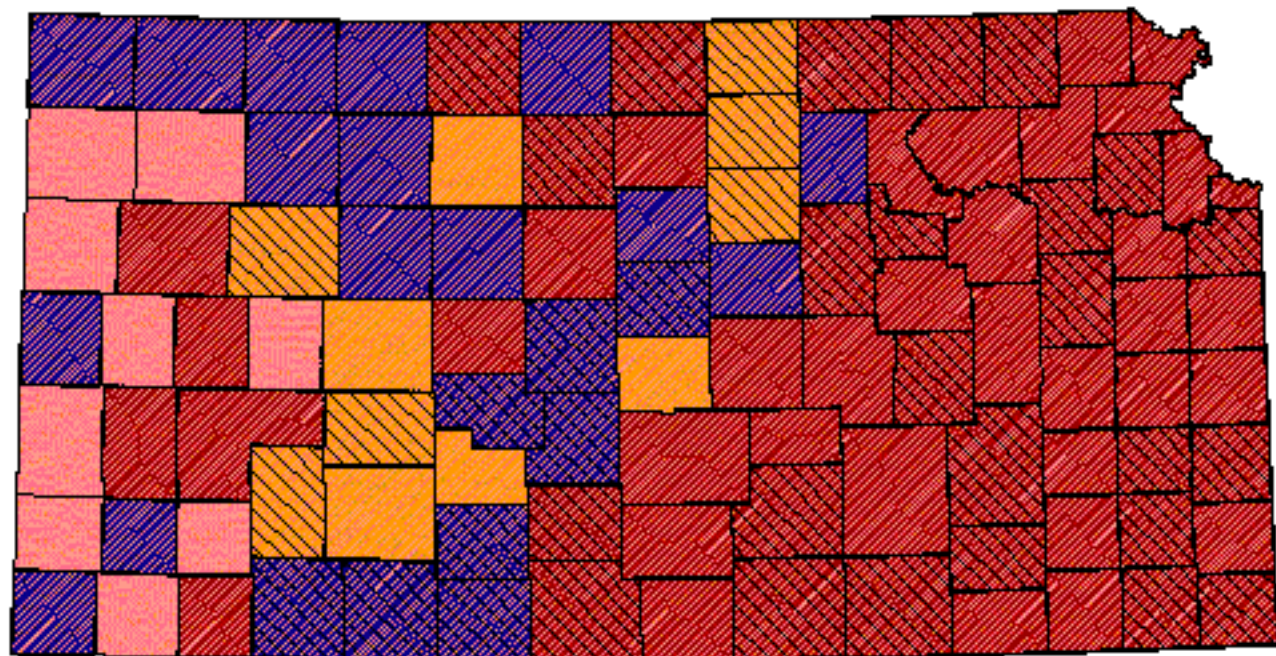
### **91 - Ozark Sandstone Glade / Prairie - not mapped**

Stauffer and Best, 1980

#### Reference List

1. Bent, A. C. 1940. Life histories of North American cuckoos, goatsuckers, hummingbirds and their allies. United States National Museum Bulletin. No. 176.
2. Fawver, B. J. 1947. Bird population of an Illinois floodplain forest. Transactions of the Illinois State Academy of Science 40:178-189.
3. Fitch, H. S. and P. von Achen. 1973. Yellow-billed Cuckoo nesting at University of Kansas Natural History Reservation. Kansas Ornithological Society Bulletin 24(2):12-15.
4. Hughes, J. M. 1999. Yellow-billed Cuckoo. A. Poole and F. Gill, editors. The Birds of North America. no. 418. The Birds of North America, Inc., Philadelphia, Pennsylvania, USA.
5. Johnston, V. R. 1947. Breeding birds of the forest edge in Illinois. Condor 49(2):45-53.
6. Kahl, R. B., T. S. Baskett, J. A. Ellis, and J. N. Burroughs. 1985. Characteristics of summer habitats of selected nongame birds in Missouri. University of Missouri Agriculture Experiment Station Research Bulletin 1056. University of Missouri, Columbia, Missouri, USA.
7. Nolan, V., Jr. 1963. Reproductive success of birds in a deciduous scrub habitat. Ecology 44(2):305-313.
8. Platt, D. R. 1975. Breeding birds of Sand Prairie Natural History Reservation, Harvey County, Kansas. American Birds 29(6):1146-1151.
9. Stauffer, D. F. and L. B. Best. 1980. Habitat selection by birds of riparian communities: evaluating effects of habitat alterations. Journal of Wildlife Management 44(1):1-15.
10. Zimmerman, J. L. 1993. The Birds of Konza. University Press of Kansas, Lawrence, Kansas, USA.

# Yellow-billed Cuckoo



## Kansas Breeding Bird Atlas

Confirmed Breeding

Probable Breeding

Possible Breeding

Breeding Bird Survey

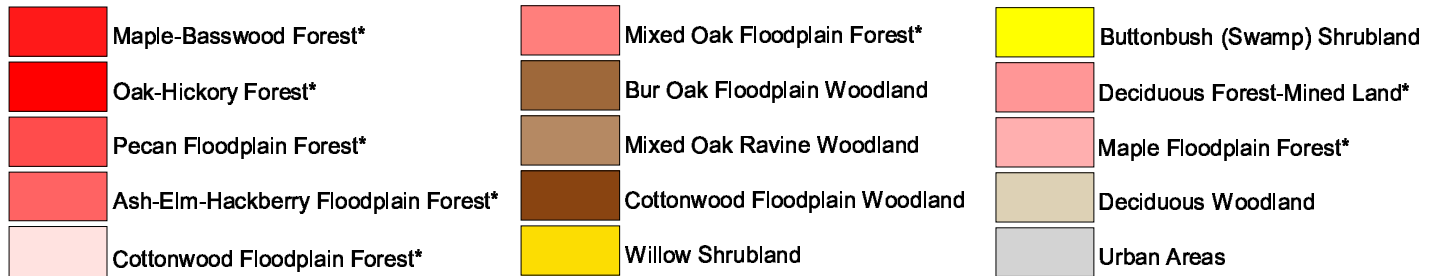
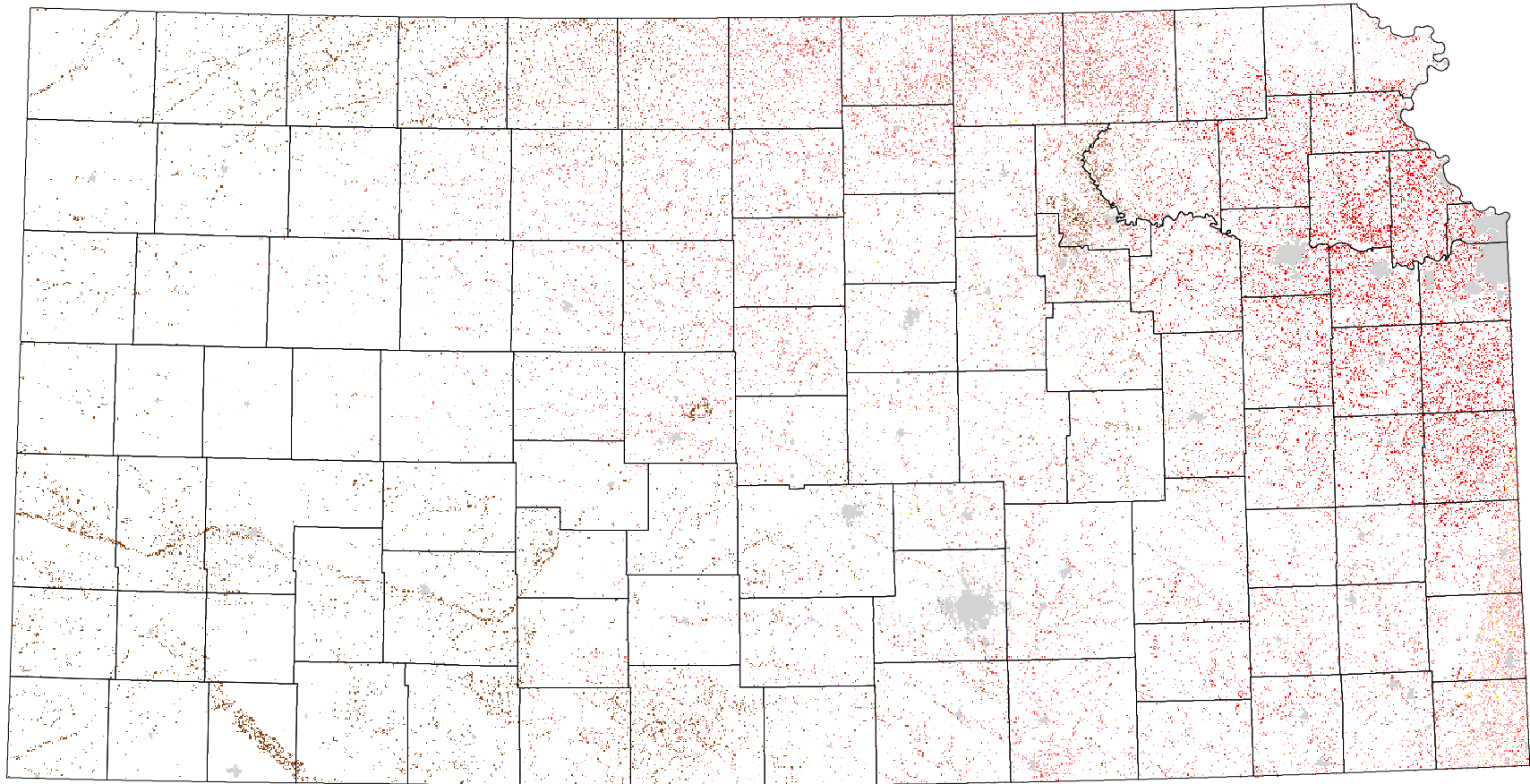
*Birds of Kansas,  
Horned Lark*

Range from Johnsgard, 1998  
*The Birds of Nebraska*

Habitat

All shaded counties will be included in the possible distribution of the species.

# Yellow-billed Cuckoo



\* 30 m edge