

Habitat Model for Species: **Wild Turkey**

Alpha Code: **WITU** Status: **Reintroduced**

[Distribution Map](#)

[Habitat Map](#)

Landcover Category

0 - Comments

[KS GAP]

900 ha minimum habitat area; 120 m edge of selected open habitats (17,18,20,22,24,25,40,41,44,71) adjacent to all forests or woodlands (1-1,50,51,52,55).

[Reviewer]

Kurzejeski and Lewis, 1990

Johnson, 1965

Badyaev, 1995
Day et al., 1991b

Schroeder, 1985
Gustafson et al., 1994

Model minimum habitat area is 900 ha.

01 - Maple-Basswood Forest

Gabrey, 1991
Schroeder, 1985
Gustafson et al., 1994
Eaton, 1992

02 - Oak-Hickory Forest

Crim, 1981
Gabrey, 1991
Johnson, 1965
Badyaev, 1995
Schroeder, 1985
Badyaev et al., 1996
Bidwell et al., 1989
Gustafson et al., 1994
Eaton, 1992

03 - Post Oak-Blackjack Oak Forest

Johnson, 1965
Schroeder, 1985
Gustafson et al., 1994
Crockett, 1973
Eaton, 1992

04 - Pecan Floodplain Forest

Kimmel, 1984
Schroeder, 1985
Gustafson et al., 1994

Comments

Applegate: Present in all counties although densities are fairly low in many western counties. Annual home range size (n=12) varied from 365 to 2,299 ha. Mean was 779.9 ha. A 50:50 mix of mast-producing woodlands and open land appears to provide ideal turkey habitat. No less than 15% of the open land should be in row crops.

Edge is important for food and nesting (edge of woodland and field/pasture)

Clear-cuts used.

Grassland sites used by broods were closer to edge habitats (mean 21m), usually woodland. The maximum distance a brood was found from a forest edge was 149 m.

Optimal habitat includes 40-60% forest cover, dendritic forest cover or very interconnected with wide strip corridors; row crops 25-35%; and meadow or pasture 10-15%. Human development <10%.

winter roosts

In winter, preferred riverfront hardwoods.

**05 - Ash-Elm-Hackberry
Floodplain Forest**

Kimmel, 1984
Gabrey, 1991
Faanes, 1987
Schroeder, 1985
Gustafson et al., 1994
Crockett, 1973
Eaton, 1992

In winter, preferred riverfront hardwoods.

winter roosts

**06 - Cottonwood Floodplain
Forest**

Kimmel, 1984
Schroeder, 1985
Stewart, 1975
Gustafson et al., 1994
Eaton, 1992

In winter, preferred riverfront hardwoods.

07 - Mixed Oak Floodplain

Day et al., 1991a
Day et al., 1991b
Schroeder, 1985
Gustafson et al., 1994
Eaton, 1992

**08 - Bur Oak Floodplain
Woodland**

Day et al., 1991a
Day et al., 1991b
Schroeder, 1985
Gustafson et al., 1994
Eaton, 1992

09 - Mixed Oak Ravine

Day et al., 1991a
Day et al., 1991b
Schroeder, 1985
Gustafson et al., 1994
Eaton, 1992

**10 - Post Oak-Blackjack Oak
Woodland**

Johnson, 1965
Schroeder, 1985
Gustafson et al., 1994
Crockett, 1973
Eaton, 1992

winter roosts

**11 - Cottonwood Floodplain
Woodland**

Kimmel, 1984
Day et al., 1991a
Day et al., 1991b
Schroeder, 1985
Stewart, 1975
Schmutz et al., 1990
Gustafson et al., 1994
Eaton, 1992

In winter, preferred riverfront hardwoods.

17 - Tallgrass Prairie

[KS GAP]

Map 120 m from forest or woodland edge.

18 - Sand Prairie

[KS GAP] Map 120 m from forest or woodland edge.

19 - Sandstone Prairie - not

mapped

[KS GAP] Map 120 m from forest or woodland edge.

20 - Western Wheatgrass

[KS GAP] Map 120 m from forest or woodland edge.

Day et al., 1991a

Day et al., 1991b

interspersed with shrub communities

interspersed with shrub communities

22 - Mixed Prairie

[KS GAP] Map 120 m from forest or woodland edge.

Day et al., 1991a

Day et al., 1991b

interspersed with shrub communities

interspersed with shrub communities

24 - Alkali Sacaton Prairie

[KS GAP] Map 120 m from forest or woodland edge.

25 - Shortgrass Prairie

[KS GAP] Map 120 m from forest or woodland edge.

Day et al., 1991a

Day et al., 1991b

interspersed with shrub communities

interspersed with shrub communities

40 - Non-native Grassland

[KS GAP] Map 120 m from forest or woodland edge.

Johnson, 1965

Gustafson et al., 1994

Eaton, 1992

pasture

41 - CRP

[KS GAP] Map 120 m from forest or woodland edge.

44 - Cultivated Land

[KS GAP] Map 120 m from forest or woodland edge.

Crim, 1981

Kimmel, 1984

cornfields

uncultivated fields, cotton fields, cotton fields, wheat fields, and fallow fields

Gabrey, 1991

Johnson, 1965

Day et al., 1991a

Day et al., 1991b

Schroeder, 1985

Stewart, 1975

Schmutz et al., 1990

Gustafson et al., 1994

wheat is good winter habitat

small grains, row crops, alfalfa

small grains, row crops, alfalfa

corn, alfalfa

51 - Maple Floodplain Forest

Schroeder, 1985

Gustafson et al., 1994

55 - Deciduous Woodland

Johnson, 1965

Day et al., 1991a

Day et al., 1991b

Schroeder, 1985

Stewart, 1975

Gustafson et al., 1994

old farmsteads

old farmsteads

71 - Weedy Upland

[KS GAP] Map 120 m from forest or woodland edge.

Johnson, 1965

Badyaev, 1995

overgrazed land

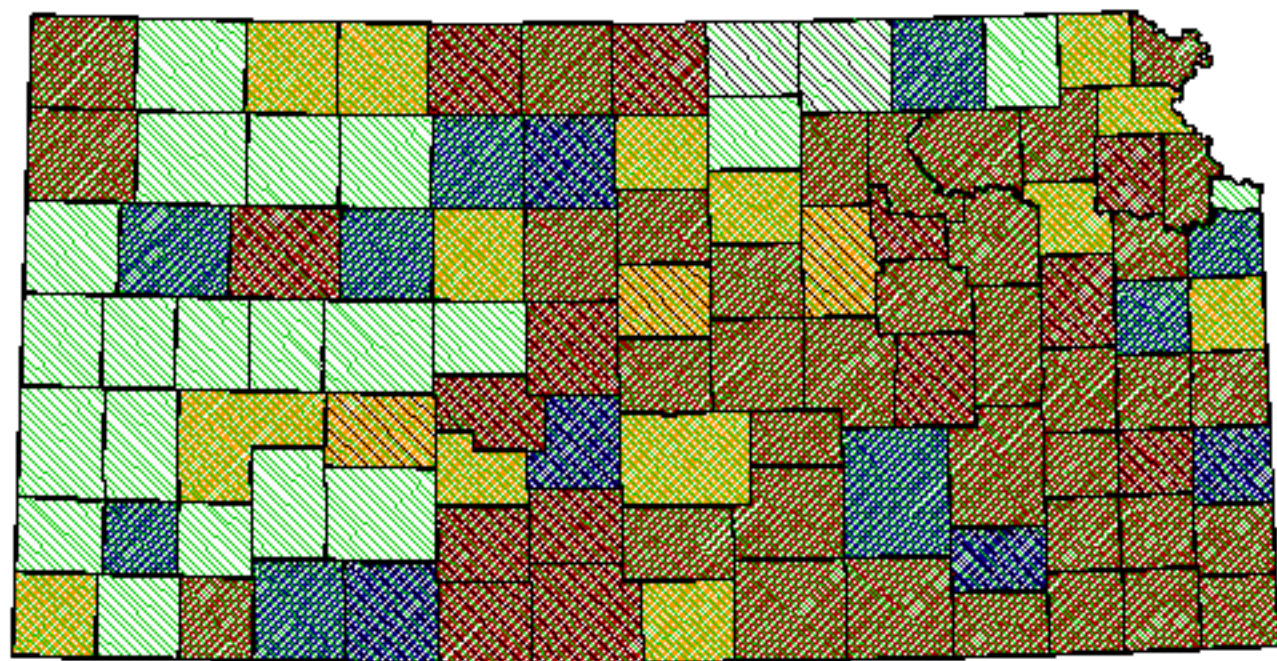
overgrown old fields

Reference List

1. Badyaev, A. V. 1995. Nesting habitat and nesting success of Eastern Wild Turkeys in the Arkansas Ozark highlands. *Condor* 97(1):221-232.
2. Badyaev, A. V., T. E. Martin, and W. J. Etges. 1996. Habitat sampling and habitat selection by female Wild Turkeys: ecological correlates and reproductive consequences. *Auk* 113(3):636-646.
3. Bidwell, T. G., S. D. Shalaway, O. E. Maughan, and L. G. Talent. 1989. Habitat use by female Eastern Wild Turkeys in southeastern Oklahoma. *Journal of Wildlife Management* 53(1):34-39.

4. Crim, G. B. 1981. Eastern Wild Turkey winter habitat use in south-central Iowa. Thesis, Iowa State University, Ames, Iowa, USA.
5. Crockett, B. C. 1973. Quantitative evaluation of winter roost sites of the Rio Grande Turkey in north-central Oklahoma. Pages 211-218 in G. C. Sanderson and H. C. Schultz, editors. *Wild Turkey management: current problems and programs*. University of Missouri Press, Columbia, Missouri, USA.
6. Day, K., L. D. Flake, and W. L. Tucker. 1991a. Characteristics of Wild Turkey nest sites in a mixed-grass prairie-oak-woodland mosaic in the northern Great Plains, South Dakota. *Canadian Journal of Zoology* 69(11):2840-2845.
7. Day, K. S., L. D. Flake, and W. L. Tucker. 1991b. Movements and habitat use by Wild Turkey hens with broods in a grassland-woodland mosaic in the northern plains. *Prairie Naturalist* 23(2):73-83.
8. Eaton, S. W. 1992. Wild Turkey. A. Poole, P. Stettenheim, and F. Gill, editors. *The Birds of North America*. No. 22. The American Ornithologists' Union and The Academy of Natural Sciences, Philadelphia, Pennsylvania, USA.
9. Faanes, C. A. 1987. Breeding birds and vegetation structure in western North Dakota wooded draws. *Prairie Naturalist* 19(4):209-220.
10. Gabrey, S. W. 1991. Wild Turkeys and agriculture in northeastern Iowa. Thesis, Iowa State University, Ames, Iowa, USA.
11. Gustafson, E. J., G. R. Parker, and S. E. Backs. 1994. Evaluating spatial pattern of wildlife habitat: a case study of the Wild Turkey (*Meleagris gallopavo*). *American Midland Naturalist* 131(1):24-33.
12. Johnson, G. W. 1965. A study of habitat requirements for the Wild Turkey in the Missouri Ozarks. Thesis, University of Missouri, Columbia, Missouri, USA.
13. Kimmel, F. G. 1984. Habitat use by Wild Turkey hens in the Mississippi river floodplain. Thesis, Louisiana Tech University, Ruston, Louisiana, USA.
14. Kurzejeski, E. W. and J. B. Lewis. 1990. Home ranges, movements, and habitat use of Wild Turkey hens in northern Missouri. Pages 67-71 in *Proceedings of the Sixth National Wild Turkey Symposium*.
15. Schmutz, J. A., C. E. Braun, and W. F. Andelt. 1990. Brood habitat use of Rio Grande Wild Turkeys. *Prairie Naturalist* 22(3):177-184.
16. Schroeder, R. L. 1985. Habitat suitability index models: Eastern Wild Turkey. Biological Report 82(10.106). U.S. Department of the Interior, Fish and Wildlife Service, Washington, D.C., USA.
17. Stewart, R. E. 1975. Breeding birds of North Dakota. Harrison Smith, Lund Press, Minneapolis, Minnesota, USA.

Wild Turkey



Kansas Breeding Bird Atlas

Confirmed Breeding

Probable Breeding

Possible Breeding

Breeding Bird Survey

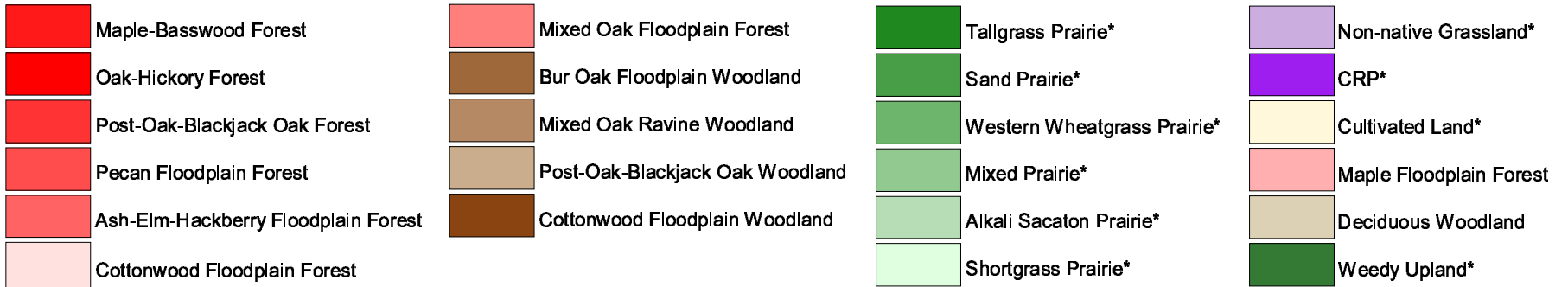
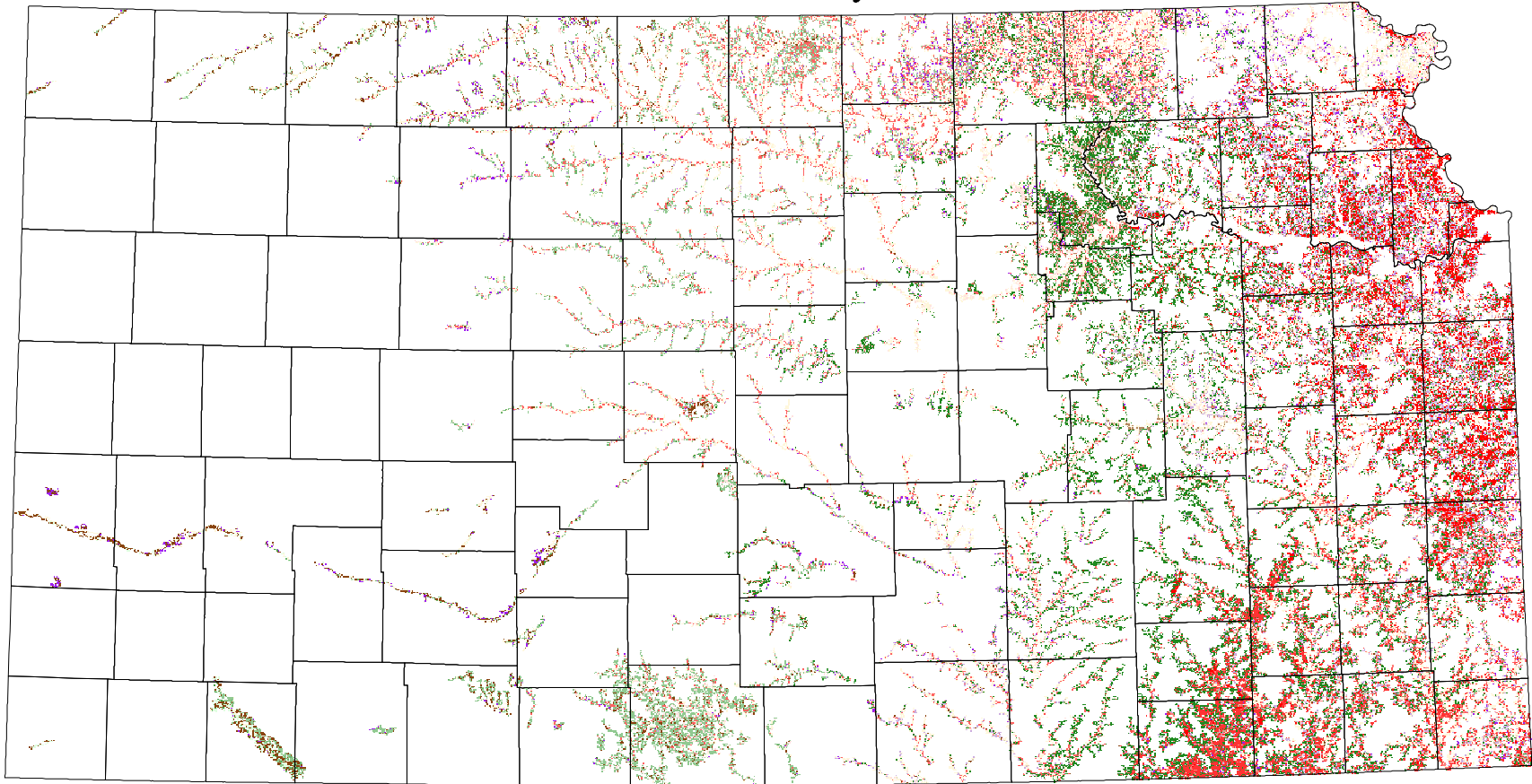
*Birds of Kansas,
Horned Lark (From KDWP)*

Range from Johnsgard, 1998
The Birds of Nebraska

Habitat

All shaded counties will be included in the possible distribution of the species.

Wild Turkey



* 120 m edge next to forests or woodlands
 Minimum habitat area = 900 ha