

Habitat Model for Species: Ring-necked Pheasant

Alpha Code: RPHE Status: Exotic

[Distribution Map](#)

[Habitat Map](#)

Landcover Category

0 - Comments

[KS GAP]

Habitat Restrictions

Selected shrublands and open habitats within 1.6 km of cultivated land; Cultivated land within 480 m of selected shrublands and open habitats; 30 m edge of selected woodlands adjacent to other selected habitats.

Comments

Trautman, 1982

strip cover areas: odd areas, field margins, waterways, roadsides, fencerows, shelterbelts. Winter cover important - marshes, shelterbelts, or groves. Areas beyond 1 mile from food are seldom theorized that territory cover rather than nesting cover is limiting. Territories are typically established on the boundaries of scrub, tall wetland vegetation, or standing residual cover at crop borders.

Robertson, 1996

Woody cover (mature trees) was used as nesting habitats, but produced few successful nests.

Wilson et al., 1990

Location of cover and degree of protection from wind were more important than the specific type of cover in winter.

Henderson, 1956

Norton County study. Perennial grasses not used. Cover types used: weeds and grasses, maize fields, pastures, brush and timber, slough grass, and barnyards.

Rowe, 1959

Trigg, 1951

Positive relationships between spring densities of hens and km of fencerow, ha of pasture and hay, and wheat and wheat stubble. Significant relationship between the interspersion index (change in cover types along diagonals) and density.

Taylor et al., 1978

Winter daily movements averaged under 300 m. Populations can not increase when patch size is <15 ha in areas of <10% grass.

Perkins et al., 1997

Clark et al., 1999

Food plots closer to wetland winter cover received greater use by pheasants.

Larsen et al., 1994

shelterbelts

Gabbert et al., 1999

Gatti et al., 1989

Warner, 1984

Herkert, 1994

Preferred habitats listed.

roadsides, edge and strip cover.

not area dependent but keying on vegetation features only.

Swanson, 1996

Westemeier et al., 1998

Literature review.

Parasitic laying by pheasant hens in prairie-chicken nests have increased and have remained high.

White, 1976

Bibliography

08 - Bur Oak Floodplain

Woodland

[KS GAP]

Map 30 m edge if adjacent to other selected habitats.

09 - Mixed Oak Ravine

[KS GAP]

Map 30 m edge if adjacent to other selected habitats.

10 - Post Oak-Blackjack Oak

Woodland

[KS GAP]

Map 30 m edge if adjacent to other selected habitats.

11 - Cottonwood Floodplain

Woodland

[KS GAP]

Map 30 m edge if adjacent to other selected habitats.

12 - Sandsage Shrubland

[KS GAP]

Map if within 1.6 km of cropland.

Snyder, 1984

13 - Saltbush - Grama
Shrubland - not mapped

[KS GAP] Map if within 1.6 km of cropland.
Snyder, 1984

14 - Willow Shrubland

[KS GAP] Map if within 1.6 km of cropland.
Trautman, 1982
Gatti et al., 1989

15 - Buttonbush (Swamp)
Shrubland

[KS GAP] Map if within 1.6 km of cropland.
Trautman, 1982

17 - Tallgrass Prairie

[KS GAP] Map if within 1.6 km of cropland.
Trautman, 1982
Wilson et al., 1990
Riley et al., 1994
Clark et al., 1999
Gabbert et al., 1999
Zimmerman, 1993

18 - Sand Prairie

[KS GAP] Map if within 1.6 km of cropland.
Trautman, 1982

19 - Sandstone Prairie - not mapped

[KS GAP] Map if within 1.6 km of cropland.
Trautman, 1982
Riley et al., 1994
Clark et al., 1999

20 - Western Wheatgrass

[KS GAP] Map if within 1.6 km of cropland.
Trautman, 1982
Snyder, 1984

22 - Mixed Prairie

[KS GAP] Map if within 1.6 km of cropland.
Trautman, 1982
Snyder, 1984
Riley et al., 1994
Clark et al., 1999
Gabbert et al., 1999

25 - Shortgrass Prairie

[KS GAP] Map if within 1.6 km of cropland.
Snyder, 1984

26 - Grass Playa Lake

[KS GAP] Map if within 1.6 km of cropland.
Trautman, 1982

28 - Spikerush Playa Lake

[KS GAP] Map if within 1.6 km of cropland.
Trautman, 1982
Gatti et al., 1989
Whiteside and Guthery, 1983

29 - Playa Lake

[KS GAP]

Trautman, 1982

Whiteside and Guthery, 1983

Map if within 1.6 km of cropland.

30 - Low or Wet Prairie

[KS GAP]

Trautman, 1982

Gatti et al., 1989

Map if within 1.6 km of cropland.

31 - Freshwater Marsh

[KS GAP]

Trautman, 1982

Clark et al., 1999

Gabbert et al., 1999

Gatti et al., 1989

Map if within 1.6 km of cropland.

32 - Bulrush Marsh

[KS GAP]

Trautman, 1982

Gatti et al., 1989

Map if within 1.6 km of cropland.

33 - Cattail Marsh

[KS GAP]

Trautman, 1982

Clark et al., 1999

Gabbert et al., 1999

Gatti et al., 1989

Map if within 1.6 km of cropland.

36 - Cottonwood Savanna - not mapped

[KS GAP]

Map 30 m edge if adjacent to other selected habitats.

37 - Winterfat - Blue Grama

Prairie - not mapped

[KS GAP]

Snyder, 1984

Map if within 1.6 km of cropland.

40 - Non-native Grassland

[KS GAP]

Trautman, 1982

Riley et al., 1994

Clark et al., 1999

Gabbert et al., 1999

Warner and Joselyn, 1986

Map if within 1.6 km of cropland.

roadsides near hay and/or small grains

41 - CRP

[KS GAP]

Trautman, 1982

Klute and Robel, 1997

Rodgers, 1999

Smith, 1996

Clark et al., 1999

Gatti et al., 1989

Map if within 1.6 km of cropland.

recommendations to enhance CRP for pheasants.
high juxtaposition of habitats is desirable.

44 - Cultivated Land

[KS GAP] Map if within .5 km of habitats mapped within 1.6 km of cropland.
Rodgers, 1981

Trautman, 1982
Rodgers, 1983
Wilson et al., 1990
Rodgers, 1999
Smith, 1996
Rowe, 1959
Linder et al., 1960
Basore et al., 1986
Clark et al., 1999
Hanson and Progulske, 1973
Whiteside and Guthery, 1983
Warner, 1979
Warner, 1984
Zimmerman, 1993

wheat stubble and alfalfa. Crops are essential part of the habitat.

nesting in wheat stubble

wheat stubble

wheat and alfalfa
nested in no-till fields but not tilled corn fields.
hayland or oats

hay or oat field served as centers for broods.

55 - Deciduous Woodland

[KS GAP] Map if within 1.6 km of cropland.
Clark et al., 1999
Gabbert et al., 1999

farm house sites
shelterbelts were used heavily in an extreme winter conditions.

70 - Weedy Marsh

[KS GAP] Map if within 1.6 km of cropland.
Clark et al., 1999
Gabbert et al., 1999

71 - Weedy Upland

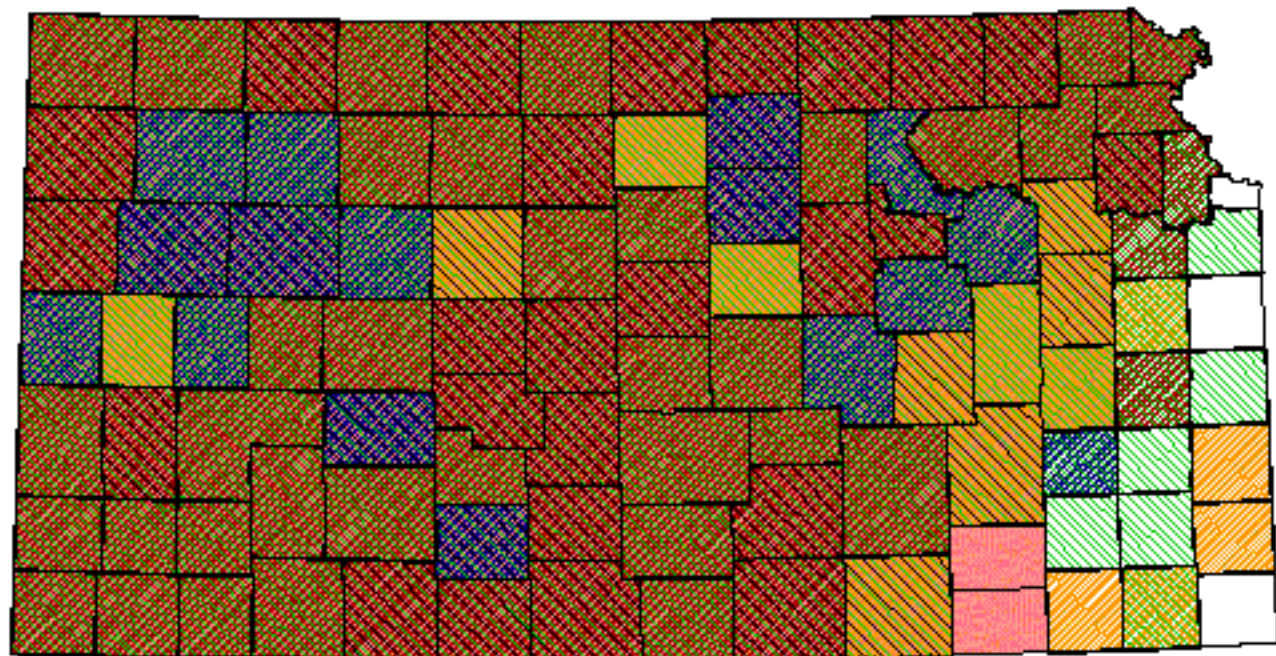
[KS GAP] Map if within 1.6 km of cropland.
Wilson et al., 1990

Reference List


1. Basore, N. S., L. B. Best, and J. B. Wooley, Jr. 1986. Bird nesting in Iowa no-tillage and tilled cropland. *Journal of Wildlife Management* 50(1):19-28.
2. Clark, W. R., R. A. Schmitz, and T. R. Bogenschutz. 1999. Site selection and nest success of Ring-necked Pheasants as a function of location in Iowa landscapes. *Journal of Wildlife Management* 63(3):976-989.
3. Gabbert, A. E., A. P. Leif, J. R. Purvis, and L. D. Flake. 1999. Survival and habitat use by Ring-necked Pheasants during two disparate winters in South Dakota. *Journal of Wildlife Management* 63(2):711-722.
4. Gatti, R. C., R. T. Dumke, and C. M. Pils. 1989. Habitat use and movements of female Ring-necked Pheasants during fall and winter. *Journal of Wildlife Management* 53(2):462-475.
5. Hanson, L. E. and D. R. Progulske. 1973. Movements and cover preference of pheasants in South Dakota. *Journal of Wildlife Management* 37(4):454-461.
6. Henderson, F. R. 1956. Winter cover of Ring-necked Pheasant, *Phasianus colchicus*, in Ellis County Kansas. Fort Hays Kansas State College, Hays, Kansas, USA.
7. Herkert, J. R. 1994. The effects of habitat fragmentation on Midwestern grassland bird communities. *Ecological Applications* 4(3):461-471.
8. Klute, D. S. and R. J. Robel. 1997. Will conversion of Conservation Reserve Program (CRP) lands to pasture be detrimental for grassland birds in Kansas? *American Midland Naturalist* 137:206-212.
9. Larsen, D. T., P. L. Crookston, and L. D. Flake. 1994. Factors associated with Ring-necked Pheasant use of winter food plots. *Wildlife Society Bulletin* 22(4):620-626.
10. Linder, R. L., D. L. Lyon, and C. P. Agee. 1960. An analysis of pheasant nesting in south-central Nebraska. *North American Wildlife Conference* 25:214-229.
11. Perkins, A. L., W. R. Clark, T. R. Riley, and P. A. Vohs. 1997. Effects of landscape and weather on winter survival of Ring-necked Pheasant. *Journal of Wildlife Management* 61(3):634-644.
12. Riley, T. Z., J. B. Wooley, Jr., and W. B. Rybarczyk. 1994. Reproduction of Ring-necked Pheasants in Iowa. *Prairie Naturalist* 26(4):263-272.
13. Robertson, P. A. 1996. Does nesting cover limit abundance of ring-necked pheasants in North America. *Wildlife Society Bulletin* 24(1):98-106.
14. Rodgers, R. D. 1981. Kansas Pheasants: going up, going down, going nowhere. *Kansas Wildlife* 38(5):4-13.
15. _____. 1983. Reducing wildlife losses to tillage in fallow wheat fields. *Wildlife Society Bulletin* 11(1):31-38.
16. _____. 1999. Why haven't pheasant populations in western Kansas increased with CRP? *Wildlife Society Bulletin* 27(3):654-665.
17. Rowe, J. C. 1959. The ecology of the Ring-necked Pheasant (*Phasianus colchicus*), Linnaeus) in northwestern Kansas. Thesis, Kansas State University, Manhattan, Kansas, USA.


18. Smith, W. K. 1996. Responses of Ring-necked Pheasants to Conservation Reserve Program fields during courtship and brood rearing in the High Plains. Thesis, Kansas State University, Manhattan, Kansas, USA.
19. Snyder, W. D. 1984. Ring-necked pheasant nesting ecology and wheat farming on the high plains. *Journal of Wildlife Management* 48(3):878-888.
20. Swanson, D. A. 1996. Nesting ecology and nesting habitat requirements of Ohio's grassland-nesting birds: A literature review. Ohio Fish and Wildlife Report 13. Ohio Department of Natural Resources, Division of Wildlife, Columbus, Ohio, USA.
21. Taylor, M. W., C. W. Wolfe, and W. L. Baxter. 1978. Land-use change and Ring-necked Pheasants in Nebraska. *Wildlife Society Bulletin* 6(4):226-230.
22. Trautman, C. G. 1982. History, ecology, and management of the Ring-necked Pheasant in South Dakota. South Dakota Game, Fish, and Parks, Pierre, South Dakota, USA.
23. Trigg, I. H. 1951. Some observations on the ecology of the Ring-necked Pheasant in Hamilton County, Kansas. Thesis, Kansas State University, Manhattan, Kansas, USA.
24. Warner, R. E. 1979. Use of cover by Pheasant broods in east-central Illinois. *Journal of Wildlife Management* 43(2):334-346.
25. _____. 1984. Effects of changing agriculture on Ring-necked Pheasant brood movements in Illinois. *Journal of Wildlife Management* 48(3):1014-1018.
26. Warner, R. E. and G. B. Joselyn. 1986. Responses of Illinois Ring-necked Pheasant populations to block roadside management. *Journal of Wildlife Management* 50(4):525-532.
27. Westemeier, R. L., J. E. Buhnerkempe, W. R. Edwards, J. D. Brawn, and S. A. Simpson. 1998. Parasitism of Greater Prairie-chicken nests by Ring-necked Pheasants. *Journal of Wildlife Management* 62(3):854-863.
28. White, J. A. 1976. Assessment of available facts relating to Ring-necked Pheasant population ecology and management: a literature review (a partial bibliography). Pittman-Robertson Project W-42-R-1. Kansas Forestry, Fish and Game Commission, Emporia, Kansas, USA.
29. Whiteside, R. W. and F. S. Guthery. 1983. Ring-necked Pheasant movements, home ranges, and habitat use in west Texas. *Journal of Wildlife Management* 47(4):1097-1104.
30. Wilson, R. J., R. D. Drobney, and D. L. Hallett. 1990. Reproductive success of translocated wild pheasants in central Missouri. Pages 332-345 in K. E. Church, R. E. Warner, and S. J. Brady, editors. *Perdix V: Gray Partridge and Ring-necked Pheasant workshop*. Kansas Department of Wildlife and Parks, Emporia, Kansas, USA.
31. Zimmerman, J. L. 1993. *The Birds of Konza*. University Press of Kansas, Lawrence, Kansas, USA.


Ring-necked Pheasant





Kansas Breeding Bird Atlas


 Confirmed Breeding

 Probable Breeding

 Possible Breeding

 Breeding Bird Survey

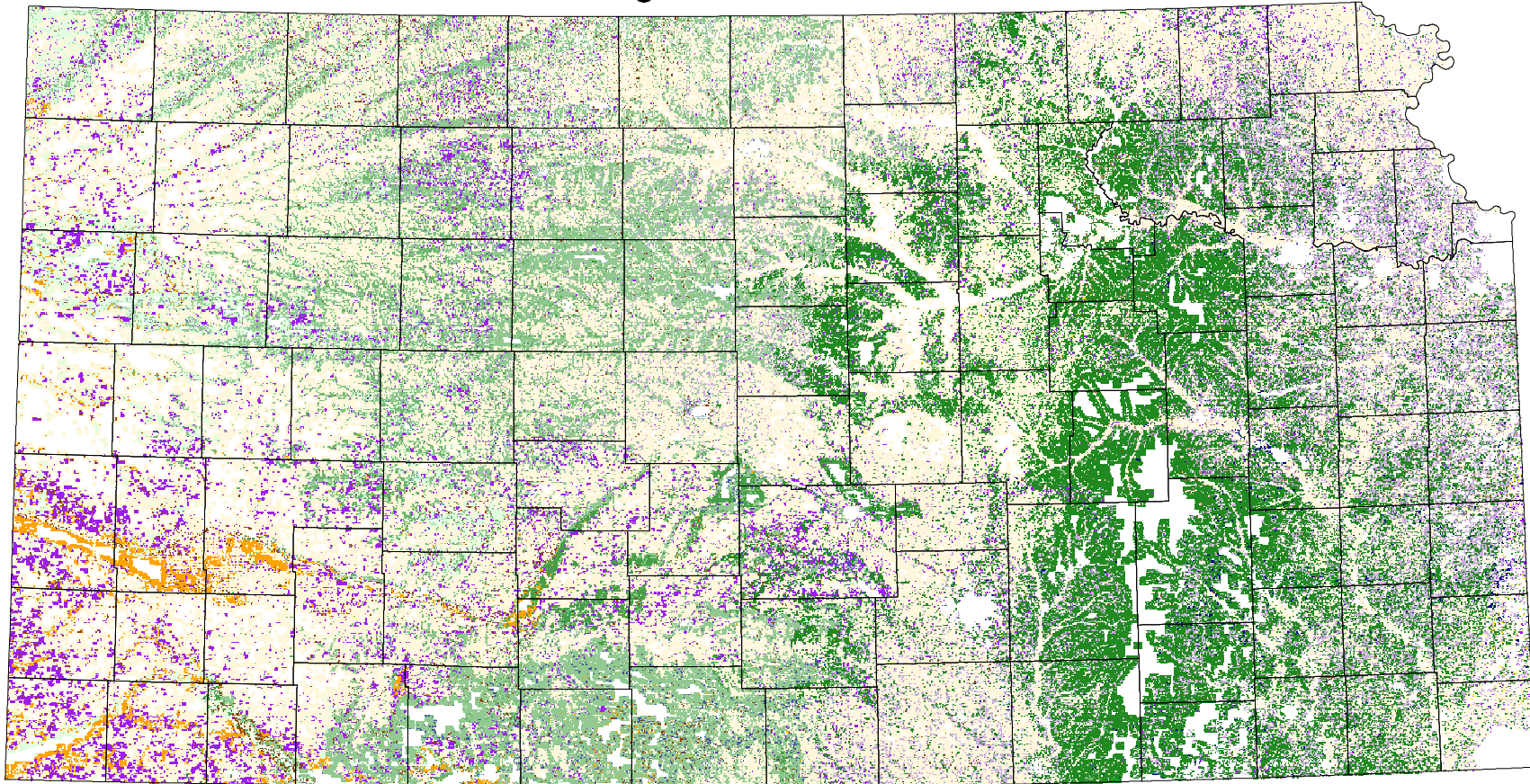
 *Birds of Kansas,*
Horned Lark

 Range from Johnsgard, 1998
The Birds of Nebraska

Habitat

All shaded counties will be included in the possible distribution of the species.

Ring-necked Pheasant



- Bur Oak Floodplain Woodland*
- Mixed Oak Ravine Woodland*
- Post-Oak-Blackjack Oak Woodland*
- Cottonwood Floodplain Woodland*
- Sadsage Shrubland
- Willow Shrubland
- Buttonbush (Swamp) Shrubland

- Tallgrass Prairie**
- Sand Prairie**
- Western Wheatgrass Prairie**
- Mixed Prairie**
- Shortgrass Prairie**
- Grass Playa Lake**

- Spikerush Playa Lake**
- Playa Lake**
- Low or Wet Prairie**
- Freshwater Marsh**
- Bulrush Marsh**
- Cattail Marsh**

- Non-native Grassland**
- CRP**
- Cultivated Land***
- Deciduous Woodland**
- Weedy Marsh**
- Weedy Upland**

* 30 m edge adjacent to other habitats
 ** if within 1.6 km of cultivated land
 *** if within .5 km of mapped habitats