

# Habitat Model for Species: Long-eared Owl

Alpha Code: LEOW Status: Resident

[Distribution Map](#)

[Habitat Map](#)

## Landcover Category

### **0 - Comments**

[KS GAP]

Habitat Restrictions  
240 m edge of all forests, woodlands, and shrubland (1-11,14,15,42, 50-52,55); 2 km edge of selected grasslands (17,18,20,22,24,25,40,41,60,71) adjacent to forest, woodlands, or shrublands.

[Reviewer]

### Comments

D. Rintoul: Riley and Clay Co. confirmed breeding. Fledgling observed in cedar windbreak, northern Riley Co. May 1987. Fledgling observed at Wakefield Landscape Arboreum, May 1989.

### **01 - Maple-Basswood Forest**

[KS GAP]

240 m edge.

Stewart, 1975  
Marks et al., 1994  
Johnsgard, 1988  
Karalus and Eckert, 1987  
Petersen, 1991

### **02 - Oak-Hickory Forest**

[KS GAP]

240 m edge.

Stewart, 1975  
Marks et al., 1994  
Johnsgard, 1988  
Karalus and Eckert, 1987  
Petersen, 1991

### **03 - Post Oak-Blackjack Oak Forest**

[KS GAP]

240 m edge.

Stewart, 1975  
Marks et al., 1994  
Johnsgard, 1988  
Karalus and Eckert, 1987  
Petersen, 1991

### **04 - Pecan Floodplain Forest**

[KS GAP]

240 m edge.

Stewart, 1975  
Marks et al., 1994  
Johnsgard, 1988  
Karalus and Eckert, 1987  
Petersen, 1991

### **05 - Ash-Elm-Hackberry Floodplain Forest**

[KS GAP]

240 m edge.

Faanes, 1987  
Stewart, 1975  
Marks et al., 1994  
Johnsgard, 1988  
Karalus and Eckert, 1987  
Petersen, 1991

adjacent to habitats listed adjacent to ash/box elder

## **06 - Cottonwood Floodplain**

### **Forest**

[KS GAP] 240 m edge.  
Stewart, 1975  
Marks et al., 1994  
Johnsgard, 1988  
Karalus and Eckert, 1987  
Petersen, 1991

## **07 - Mixed Oak Floodplain**

[KS GAP] 240 m edge.  
Stewart, 1975  
Marks et al., 1994  
Johnsgard, 1988  
Karalus and Eckert, 1987  
Petersen, 1991

## **08 - Bur Oak Floodplain**

### **Woodland**

[KS GAP] 240 m edge.  
Stewart, 1975  
Marks et al., 1994  
Johnsgard, 1988  
Karalus and Eckert, 1987  
Petersen, 1991

## **09 - Mixed Oak Ravine**

[KS GAP] 240 m edge.  
Stewart, 1975  
Marks et al., 1994  
Johnsgard, 1988  
Karalus and Eckert, 1987  
Petersen, 1991

## **10 - Post Oak-Blackjack Oak**

### **Woodland**

[KS GAP] 240 m edge.  
Stewart, 1975  
Marks et al., 1994  
Johnsgard, 1988  
Karalus and Eckert, 1987  
Petersen, 1991

## **11 - Cottonwood Floodplain**

### **Woodland**

[KS GAP] 240 m edge.  
Moulton et al., 1976  
Faanes, 1987  
Stewart, 1975  
Marks et al., 1994  
Johnsgard, 1988  
Karalus and Eckert, 1987  
Petersen, 1991

adjacent to habitats listed adjacent to ash/box elder

## **14 - Willow Shrubland**

[KS GAP] 240 m edge.  
Stewart, 1975  
Marks et al., 1994  
Johnsgard, 1988  
Karalus and Eckert, 1987  
Petersen, 1991

## **15 - Buttonbush (Swamp)**

### **Shrubland**

[KS GAP]

240 m edge.

Stewart, 1975

Marks et al., 1994

Johnsgard, 1988

Karalus and Eckert, 1987

Petersen, 1991

## **17 - Tallgrass Prairie**

[KS GAP] 2 km edge adjacent to forests, woodlands, or shrublands.

Stewart, 1975

Marks et al., 1994

Johnsgard, 1988

Karalus and Eckert, 1987

Petersen, 1991

## **18 - Sand Prairie**

[KS GAP] 2 km edge adjacent to forests, woodlands, or shrublands.

Stewart, 1975

Marks et al., 1994

Johnsgard, 1988

Karalus and Eckert, 1987

Petersen, 1991

## **19 - Sandstone Prairie - not mapped**

Stewart, 1975

Marks et al., 1994

Johnsgard, 1988

Karalus and Eckert, 1987

Petersen, 1991

## **20 - Western Wheatgrass**

[KS GAP] 2 km edge adjacent to forests, woodlands, or shrublands.

Moulton et al., 1976

Stewart, 1975

Marks et al., 1994

Johnsgard, 1988

Karalus and Eckert, 1987

Petersen, 1991

## **22 - Mixed Prairie**

[KS GAP] 2 km edge adjacent to forests, woodlands, or shrublands.

Moulton et al., 1976

Faanes, 1987

Stewart, 1975

Marks et al., 1994

Johnsgard, 1988

Karalus and Eckert, 1987

Petersen, 1991

adjacent to ash/box elder draw

## **24 - Alkali Sacaton Prairie**

[KS GAP] 2 km edge adjacent to forests, woodlands, or shrublands.

Stewart, 1975

Marks et al., 1994

Johnsgard, 1988

Karalus and Eckert, 1987

Petersen, 1991

## **25 - Shortgrass Prairie**

[KS GAP] 2 km edge adjacent to forests, woodlands, or shrublands.  
Stewart, 1975  
Marti, 1974

Marks et al., 1994  
Johnsgard, 1988  
Karalus and Eckert, 1987  
Petersen, 1991

with low, dense coniferous or deciduous trees for nesting and roosting

## **40 - Non-native Grassland**

[KS GAP] 2 km edge adjacent to forests, woodlands, or shrublands.  
Stewart, 1975  
Marks et al., 1994  
Johnsgard, 1988  
Karalus and Eckert, 1987  
Petersen, 1991

## **41 - CRP**

[KS GAP] 2 km edge adjacent to forests, woodlands, or shrublands.  
Stewart, 1975  
Marks et al., 1994  
Johnsgard, 1988  
Karalus and Eckert, 1987  
Petersen, 1991

## **42 - Salt Cedar or Tamarisk Shrubland**

[KS GAP] 240 m edge.  
Stewart, 1975  
Marks et al., 1994  
Johnsgard, 1988  
Karalus and Eckert, 1987  
Petersen, 1991

## **50 - Deciduous Forest-Mined Land**

[KS GAP] 240 m edge.  
Stewart, 1975  
Marks et al., 1994  
Johnsgard, 1988  
Karalus and Eckert, 1987  
Petersen, 1991

## **51 - Maple Floodplain Forest**

[KS GAP] 240 m edge.  
Stewart, 1975  
Marks et al., 1994  
Johnsgard, 1988  
Karalus and Eckert, 1987  
Petersen, 1991

## **52 - Evergreen Forest-Disturbed Land**

[KS GAP] 240 m edge.  
Stewart, 1975  
Marks et al., 1994  
Johnsgard, 1988  
Karalus and Eckert, 1987  
Petersen, 1991

## **55 - Deciduous Woodland**

[KS GAP]

240 m edge.

Stewart, 1975

Marks et al., 1994

Johnsgard, 1988

Karalus and Eckert, 1987

Petersen, 1991

## **60 - Mixed Prairie-Disturbed**

### **Land**

[KS GAP]

2 km edge adjacent to forests, woodlands, or shrublands.

Stewart, 1975

Marks et al., 1994

Johnsgard, 1988

Karalus and Eckert, 1987

Petersen, 1991

## **71 - Weedy Upland**

[KS GAP]

2 km edge adjacent to forests, woodlands, or shrublands.

Stewart, 1975

Marks et al., 1994

Johnsgard, 1988

Karalus and Eckert, 1987

Petersen, 1991

## **91 - Ozark Sandstone Glade /**

### **Prairie - not mapped**

Moulton et al., 1976

Stewart, 1975

Marks et al., 1994

Johnsgard, 1988

Karalus and Eckert, 1987

Petersen, 1991

## **92 - Ozark Limestone Glade -**

### **not mapped**

Moulton et al., 1976

Stewart, 1975

Marks et al., 1994

Johnsgard, 1988

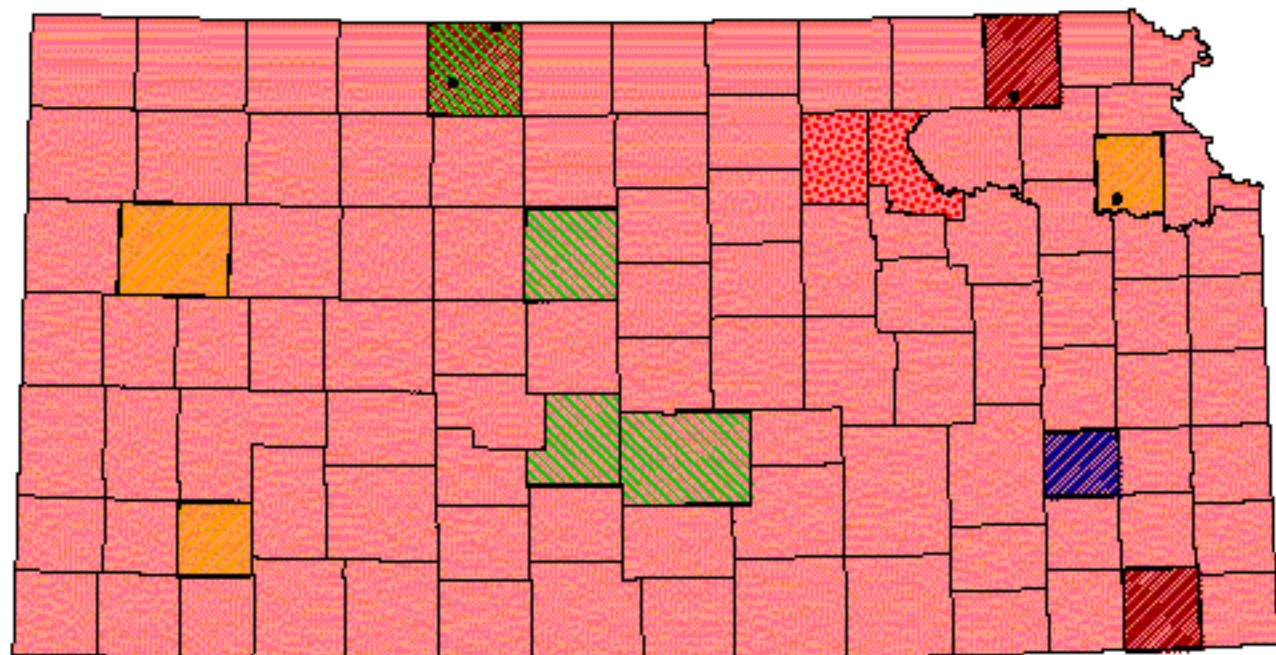
Karalus and Eckert, 1987

Petersen, 1991

## Reference List

1. Faanes, C. A. 1987. Breeding birds and vegetation structure in western North Dakota wooded draws. *Prairie Naturalist* 19(4):209-220.
2. Johnsgard, P. A. 1988. *North American Owls*. Smithsonian Institute Press, Washington, D.C., USA.
3. Karalus, K. E. and A. E. Eckert. 1987. *The Owls of North America*. Weathervane Books, New York, New York, USA.
4. Marks, J. S., D. L. Evans, and D. W. Holt. 1994. Long-eared Owl. A. Poole and F. Gill, *The Birds of North America*. No. 133. The American Ornithologists' Union and The Academy of Natural Sciences, Philadelphia, Pennsylvania, USA.
5. Marti, C. D. L. 1974. Feeding ecology of four sympatric owls. *Condor* 76:45-61.
6. Moulton, P., M. Moulton, and J. Sundine. 1976. Observations of nesting - Long-eared Owls. *Colorado Field Ornithologists Journal* 28(Fall):4-7.
7. Petersen, L. R. 1991. Mixed woodland owls. Pages 86-95 *in* Proceedings of the Midwest raptor management symposium and workshop. National Wildlife Federation, Washington, D.C., USA.
8. Stewart, R. E. 1975. *Breeding birds of North Dakota*. Harrison Smith, Lund Press, Minneapolis, Minnesota, USA.

# Long-eared Owl




## Kansas Breeding Bird Atlas


 Confirmed Breeding

 Probable Breeding

 Possible Breeding

 Breeding Bird Survey

 Birds of Kansas,  
Horned Lark

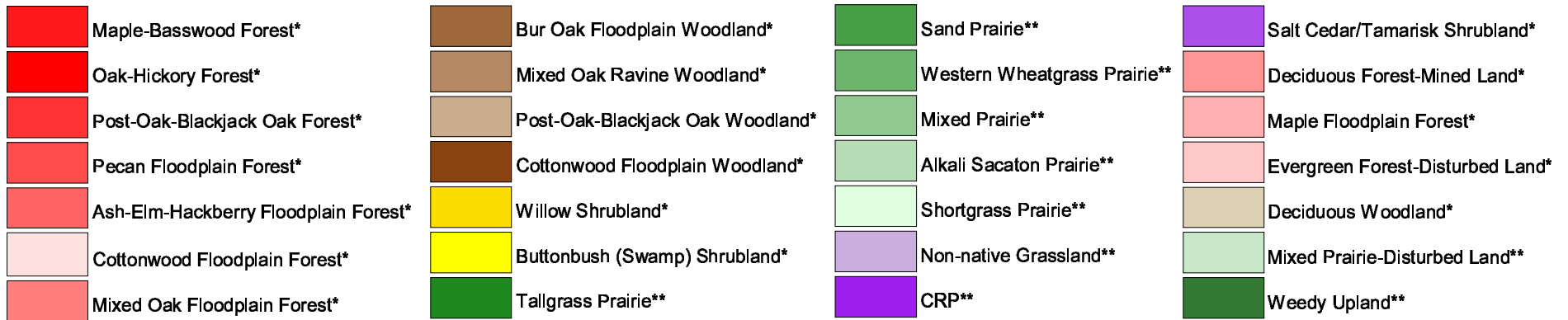
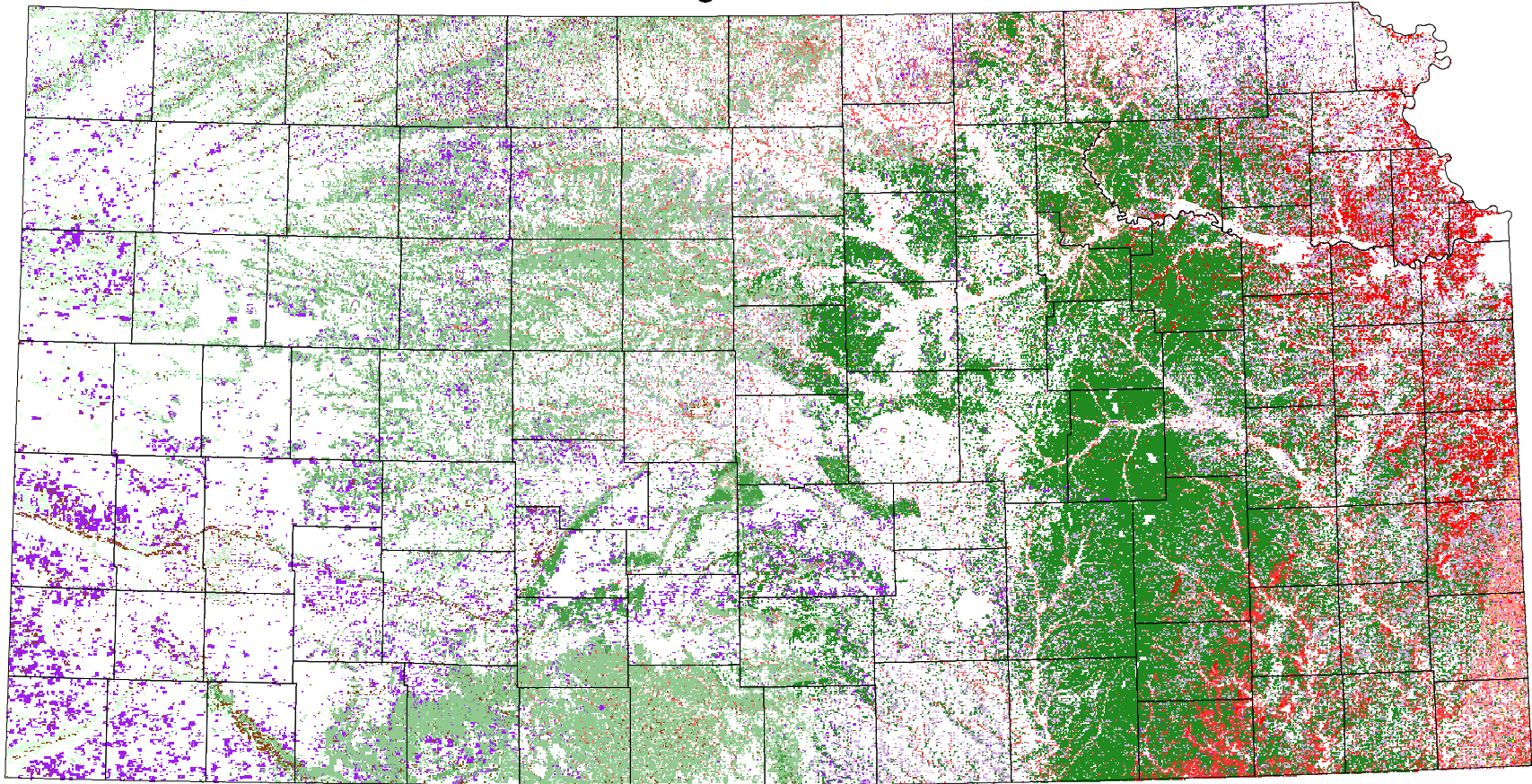
 Range from Johnsgard, 1882  
*The Birds of Nebraska*

 Kansas Biological Survey Data

 Reulewer comments

All shaded counties will be included in the distribution of the species.

# Long-eared Owl



\* 240 m edge

\*\* 2 km edge if adjacent to forest, woodland or shrubland