

Habitat Model for Species: Hairy Woodpecker

Alpha Code: HAWO Status: Resident

[Distribution Map](#)

[Habitat Map](#)

Landcover Category

0 - Comments

Sousa, 1987 Map habitats > 4 ha. Suggested minimum area requirement = 4 ha (40,000 sq. m).

Robbins et al., 1989

Conner and Adkisson, 1976

Graber et al., 1978

Conner and Adkisson, 1977

Whitcomb et al., 1981

Evans and Conner,

Habitat Restrictions

Comments

Wide variety of forest cover types with the approx. 100 snags/40 ha and trees with >25 cm dbh.

Area (ha) at which probability is maximum - 200 and 50% - 6.8 (suggested minimum)

Nested in both live and dead trees but all trees were infected by heart rot.

Occupies both upland and lowland forest, apparently favoring bottomland woods. Found more hairies on average in bottomland woods than upland.

Downy and Hairy had the most similar nesting habitat. Nests over a wide range of basal areas, canopy heights, densities of stems, and distances

Territories found in >6 ha islands.

snag characteristics: 25-35cm dbh; 6-12 m ht.;

snags/40 ha - 200 population maximum to 40 20% of maximum

01 - Maple-Basswood Forest

Stauffer and Best, 1980

Sousa, 1987

Johnston, 1947

Johnsgard, 1998

> 4 ha (40,000 sq. m)

02 - Oak-Hickory Forest

Stauffer and Best, 1980

Sousa, 1987

Conner and Adkisson, 1976

Johnsgard, 1998

Conner et al., 1975

Petit et al., 1985

Kahl et al., 1985

Anderson and Shugart, 1974

> 4 ha (40,000 sq. m)

03 - Post Oak-Blackjack Oak Forest

Sousa, 1987

Johnsgard, 1998

> 4 ha (40,000 sq. m)

04 - Pecan Floodplain Forest

Sousa, 1987

Johnsgard, 1998

> 4 ha (40,000 sq. m)

05 - Ash-Elm-Hackberry Floodplain Forest

Stauffer and Best, 1980

Sousa, 1987

Burns and Dahlgren, 1983

Johnsgard, 1998

Zimmerman and Tatschl, 1975

> 4 ha (40,000 sq. m)

breeding and wintering

06 - Cottonwood Floodplain Forest

Sousa, 1987

Johnsgard, 1998

Smith, 1962

Kahl et al., 1985

> 4 ha (40,000 sq. m)

07 - Mixed Oak Floodplain

Sousa, 1987
Finck, 1984
Zimmerman, 1993
Johnsgard, 1998

> 4 ha (40,000 sq. m)

08 - Bur Oak Floodplain Woodland

Sousa, 1987
Finck, 1984
Zimmerman, 1993
Johnston, 1947
Johnsgard, 1998

> 4 ha (40,000 sq. m)

09 - Mixed Oak Ravine

Sousa, 1987
Finck, 1984
Zimmerman, 1993
Johnsgard, 1998

> 4 ha (40,000 sq. m)

10 - Post Oak-Blackjack Oak Woodland

Sousa, 1987
Johnsgard, 1998

> 4 ha (40,000 sq. m)

11 - Cottonwood Floodplain Woodland

Sousa, 1987
Sousa, 1987
Johnsgard, 1998
Smith, 1962

> 4 ha (40,000 sq. m)

50 - Deciduous Forest-Mined Land

Sousa, 1987
Johnsgard, 1998

> 4 ha (40,000 sq. m)

51 - Maple Floodplain Forest

Stauffer and Best, 1980
Sousa, 1987
Burns and Dahlgren, 1983
Johnsgard, 1998

> 4 ha (40,000 sq. m)

55 - Deciduous Woodland

Sousa, 1987
Johnsgard, 1998

> 4 ha (40,000 sq. m)

81 - Urban Areas

Johnsgard, 1998

Not as common as Hairy Woodpeckers. Prefers mature forest.

91 - Ozark Sandstone Glade / Prairie - not mapped

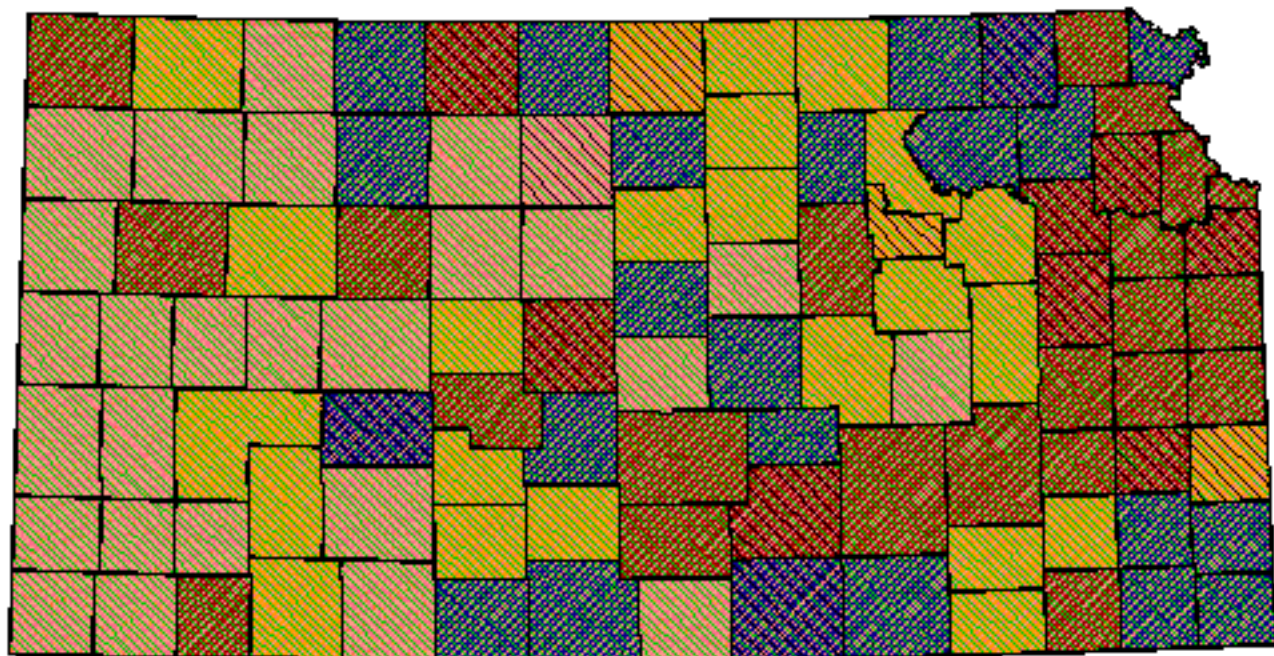
Stauffer and Best, 1980

Reference List


1. Anderson, S. H. and H. H. Shugart, Jr. 1974. Habitat selection of breeding birds in an east Tennessee deciduous forest. *Ecology* 55:828-837.
2. Burns, T. L. and R. B. Dahlgren. 1983. Breeding bird use of flooded dead trees in Rathbun Reservoir Iowa. Pages 99-101 *in* Snag habitat management: proceedings of the symposium. General Technical Report RM-99. U.S. Forest Service, Fort Collins, Colorado, USA.
3. Conner, R. N. and C. S. Adkisson. 1976. Discriminant function analysis: a possible aid in determining the impact of forest management on Woodpecker nesting habitat. *Forest Science* 22(2):122-127.
4. _____. 1977. Principal component analysis of Woodpecker nesting habitat. *Wilson Bulletin* 89(1):122-129.
5. Conner, R. N., R. G. Hooper, H. S. Crawford, and H. S. Mosby. 1975. Woodpecker nesting habitat in cut and uncut woodlands in Virginia. *Journal of Wildlife Management* 39(1):144-150.
6. Evans, K. E. and R. N. Conner. Snag Management. Pages 214-225 *in* Management of North Central and Northeastern forests for nongame birds. General Technical Report NC-51. U.S. Forest Service, St. Paul, Minnesota, USA.
7. Finck, E. J. 1984. Birds wintering on the Konza Prairie Research Natural Area. Pages 91-94 *in* G. K. Clambey and R. H.


- Pemble, editors. The prairie: Past, present and future. Proceedings of the Ninth North American Prairie Conference.
8. Graber, J. W., R. R. Graber, and E. L. Kirk. 1978. Illinois Birds: Picidae. Illinois Natural History Survey Biological Notes No. 102.
 9. Johnsgard, P. A. 1998. The Birds of Nebraska. University of Nebraska-Lincoln, (available from author).
 10. Johnston, V. R. 1947. Breeding birds of the forest edge in Illinois. *Condor* 49(2):45-53.
 11. Kahl, R. B., T. S. Baskett, J. A. Ellis, and J. N. Burroughs. 1985. Characteristics of summer habitats of selected nongame birds in Missouri. University of Missouri Agriculture Experiment Station Research Bulletin 1056. University of Missouri, Columbia, Missouri, USA.
 12. Petit, D. R., K. E. Petit, T. C. Grubb, Jr., and L. J. Reichardt. 1985. Habitat and snag selection by woodpeckers in a clear-cut: an analysis using artificial snags. *Wilson Bulletin* 97(4):525-533.
 13. Robbins, C. S., D. K. Dawson, and B. A. Dowell. 1989. Habitat area requirements of breeding forest birds of the Middle Atlantic States. *Wildlife Monographs* 103:1-34.
 14. Smith, L. M. 1962. Winter ecology of Woodpeckers and Nuthatches in southeastern South Dakota. Dissertation, University of South Dakota, Vermillion, South Dakota, USA.
 15. Sousa, P. J. 1987. Habitat suitability index model: Hairy Woodpecker. Biological Report 82(10.146). U. S. Department of the Interior, Fish and Wildlife Service, Washington, D.C., USA.
 16. Stauffer, D. F. and L. B. Best. 1980. Habitat selection by birds of riparian communities: evaluating effects of habitat alterations. *Journal of Wildlife Management* 44(1):1-15.
 17. Whitcomb, R. F., C. S. Robbins, J. F. Lynch, B. L. Whitcomb, M. K. Klimkiewicz, and D. Bystrak. 1981. Effects of forest fragmentation on avifauna of the Eastern Deciduous Forest. Pages 126-205 in R. L. Burgess and D. M. Sharpe, editors. *Forest island dynamics in man-dominated landscapes*. Springer-Verlag, New York, New York, USA.
 18. Zimmerman, J. L. 1993. The Birds of Konza. University Press of Kansas, Lawrence, Kansas, USA.
 19. Zimmerman, J. L. and J. L. Tatschl. 1975. Floodplain birds of Weston Bend, Missouri River. *Wilson Bulletin* 87(2):196-208.


Hairy Woodpecker





Kansas Breeding Bird Atlas


 Confirmed Breeding

 Probable Breeding

 Possible Breeding

 Breeding Bird Survey

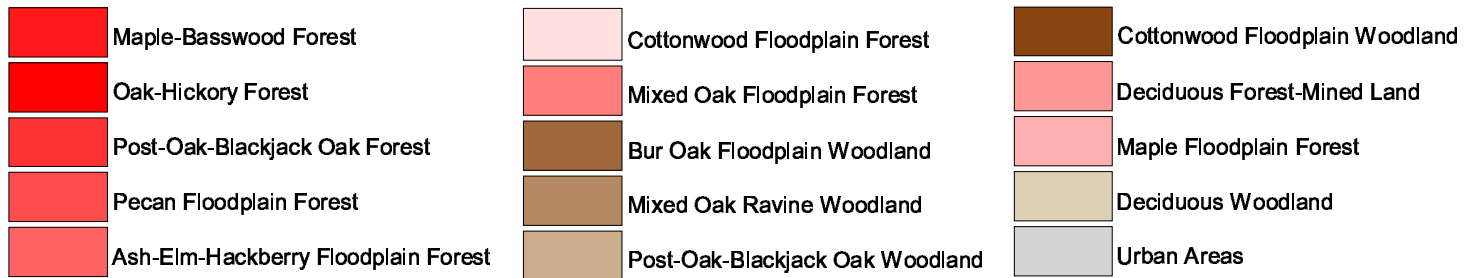
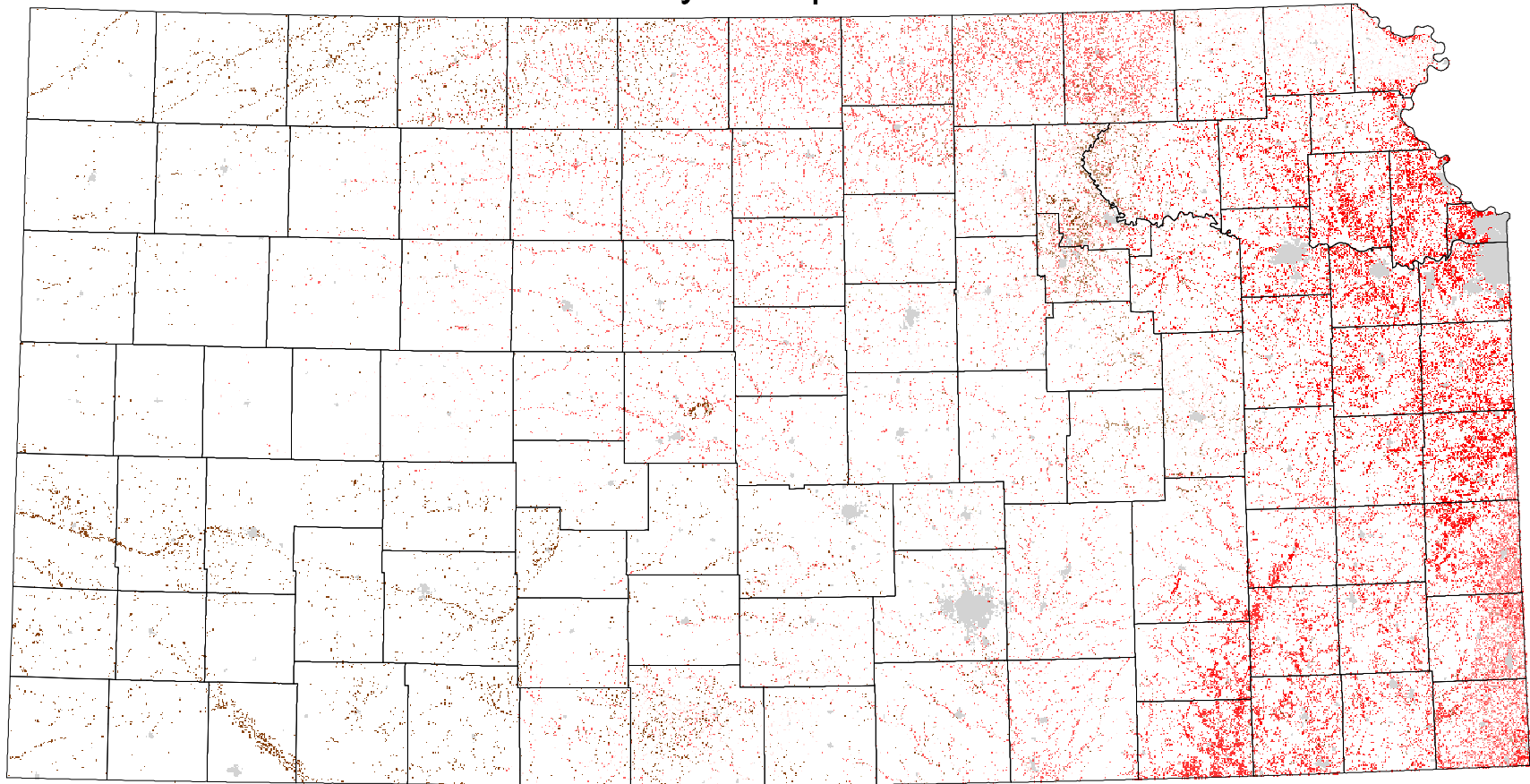
 *Birds of Kansas,*
Horned Lark

 Range from Johnsgard, 1998
The Birds of Nebraska

Habitat

All shaded counties will be included in the possible distribution of the species.

Hairy Woodpecker



Minimum habitat area = 4 ha