

Habitat Model for Species: Downy Woodpecker

Alpha Code: DOWO Status: Resident

[Distribution Map](#)

[Habitat Map](#)

Landcover Category

0 - Comments

Conner and Adkisson, 1977

Evans and Conner,

Schroeder, 1982
Graber et al., 1978

Habitat Restrictions

All habitats must be >4 ha.

Comments

Preferred to nest in areas with lower basal and lower canopy height than other woodpeckers. Indicated a preference for nesting areas of high density of stems. snag characteristics: 15-25cm dbh; 3-9 m ht.; snags/40 ha - 400 population maximum to 80 20% of

Populations consistently higher in bottomland than in upland. Lowest populations was urban residential habitat.

01 - Maple-Basswood Forest

Stauffer and Best, 1980

Peterson and Grubb, 1983

Schroeder, 1982

Williams, 1975

Johnston, 1947

Johnsgard, 1998

> 4 ha.

02 - Oak-Hickory Forest

Stauffer and Best, 1980

Peterson and Grubb, 1983

Petit et al., 1985

Conner and Adkisson, 1976

Conner et al., 1975

Schroeder, 1982

Kahl et al., 1985

Anderson and Shugart, 1974

Johnsgard, 1998

> 4 ha.

03 - Post Oak-Blackjack Oak

Forest

Schroeder, 1982

Smith, 1977

Johnsgard, 1998

> 4 ha.

04 - Pecan Floodplain Forest

Schroeder, 1982

Jackson, 1970

Romary, 1990

Johnsgard, 1998

> 4 ha.

05 - Ash-Elm-Hackberry

Floodplain Forest

Stauffer and Best, 1980

Schroeder, 1982

Burns and Dahlgren, 1983

Fawver, 1947

Williams, 1975

Smith, 1973

Jackson, 1970

Romary, 1990

Zimmerman and Tatschl, 1975

Obermeyer, 1992

Johnsgard, 1998

> 4 ha.

breeding and wintering

06 - Cottonwood Floodplain

Forest

Conner and Adkisson, 1977

Schroeder, 1982

Peters, 1982

Smith, 1962

Romary, 1990

Zimmerman and Tatschl, 1975

Gutzwiller and Anderson, 1987 Minimum area found acceptable = 2.90 ha.

Gutzwiller and Anderson, 1987 Minimum area found acceptable = 1.99ha.

Kahl et al., 1985

Johnsgard, 1998

> 4 ha.

nesting habitat
nesting habitat

07 - Mixed Oak Floodplain

Schroeder, 1982 > 4 ha.
Zimmerman, 1993
Finck, 1984
Romary, 1990
Johnsgard, 1998

08 - Bur Oak Floodplain

Woodland

Schroeder, 1982 > 4 ha.
Zimmerman, 1993
Johnston, 1947
Finck, 1984
Romary, 1990
Johnsgard, 1998

09 - Mixed Oak Ravine

Schroeder, 1982 > 4 ha.
Zimmerman, 1993
Finck, 1984
Johnsgard, 1998

10 - Post Oak-Blackjack Oak

Woodland

Schroeder, 1982 > 4 ha.
Smith, 1977
Johnsgard, 1998

11 - Cottonwood Floodplain

Woodland

Sedgwick and Knopf, 1986
Bergstrom, 1977
Schroeder, 1982 > 4 ha.
Smith, 1973
Smith, 1962
Romary, 1990
Gutzwiller and Anderson, 1987 Minimum area found acceptable = 1.99ha. nesting habitat
Johnsgard, 1998

50 - Deciduous Forest-Mined

Land

Schroeder, 1982 > 4 ha.
Johnsgard, 1998

51 - Maple Floodplain Forest

Stauffer and Best, 1980
Schroeder, 1982 > 4 ha.
Burns and Dahlgren, 1983
Fawver, 1947
Williams, 1975
Johnsgard, 1998

55 - Deciduous Woodland

Schroeder, 1982 > 4 ha.
Jackson, 1970
Romary, 1990
Johnsgard, 1998

81 - Urban Areas

Graber et al., 1978
Johnsgard, 1998

91 - Ozark Sandstone Glade / Prairie - not mapped

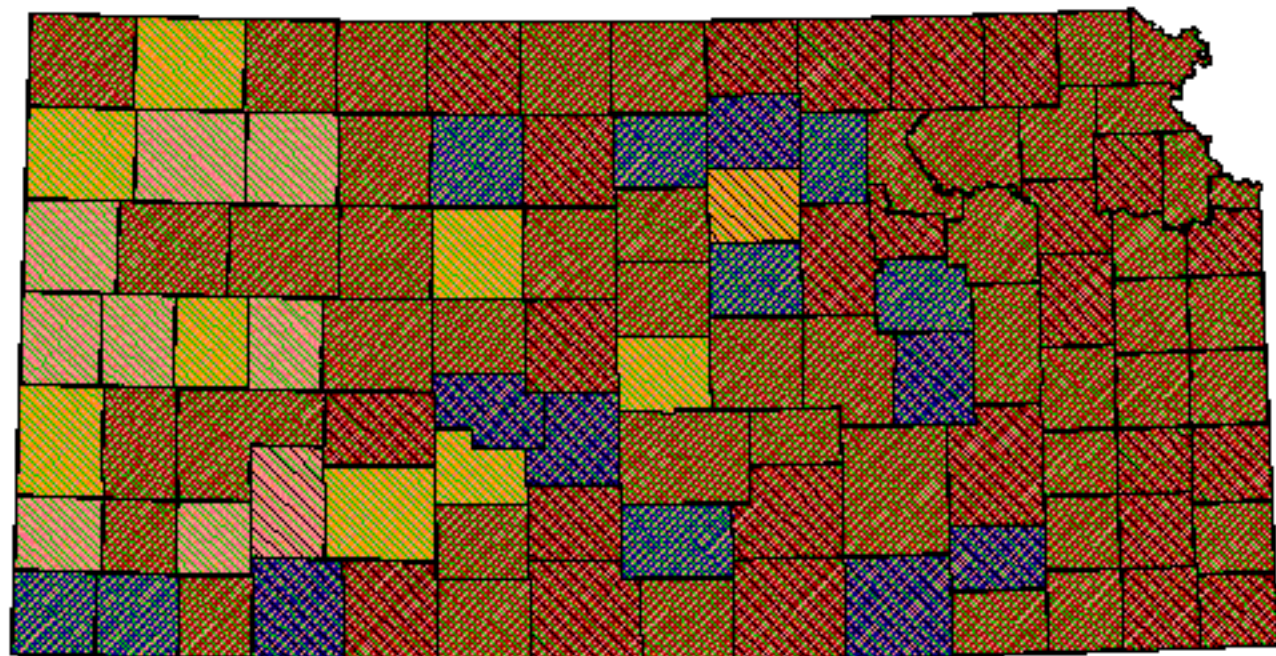
Stauffer and Best, 1980

Reference List

1. Anderson, S. H. and H. H. Shugart, Jr. 1974. Habitat selection of breeding birds in an east Tennessee deciduous forest. Ecology 55:828-837.
2. Bergstrom, J. T. 1977. Ecology and behavior of Woodpeckers in the South Platte River floodplain. Dissertation, University of Northern Colorado, Greeley, Colorado, USA.

3. Burns, T. L. and R. B. Dahlgren. 1983. Breeding bird use of flooded dead trees in Rathbun Reservoir Iowa. Pages 99-101 *in* Snag habitat management: proceedings of the symposium. General Technical Report RM-99. U.S. Forest Service, Fort Collins, Colorado, USA.
4. Conner, R. N. and C. S. Adkisson. 1976. Discriminant function analysis: a possible aid in determining the impact of forest management on Woodpecker nesting habitat. *Forest Science* 22(2):122-127.
5. _____. 1977. Principal component analysis of Woodpecker nesting habitat. *Wilson Bulletin* 89(1):122-129.
6. Conner, R. N., R. G. Hooper, H. S. Crawford, and H. S. Mosby. 1975. Woodpecker nesting habitat in cut and uncut woodlands in Virginia. *Journal of Wildlife Management* 39(1):144-150.
7. Evans, K. E. and R. N. Conner. Snag Management. Pages 214-225 *in* Management of North Central and Northeastern forests for nongame birds. General Technical Report NC-51. U.S. Forest Service, St. Paul, Minnesota, USA.
8. Fawver, B. J. 1947. Bird population of an Illinois floodplain forest. *Transactions of the Illinois State Academy of Science* 40:178-189.
9. Finck, E. J. 1984. Birds wintering on the Konza Prairie Research Natural Area. Pages 91-94 *in* G. K. Clambey and R. H. Pemble, editors. *The prairie: Past, present and future*. Proceedings of the Ninth North American Prairie Conference.
10. Graber, J. W., R. R. Graber, and E. L. Kirk. 1978. Illinois Birds: Picidae. Illinois Natural History Survey Biological Notes No. 102.
11. Gutzwiller, K. J. and S. H. Anderson. 1987. Multiscale associations between cavity-nesting birds and features of Wyoming streamside woodlands. *Condor* 89:534-548.
12. Jackson, J. A. 1970. A quantitative study of the foraging ecology of Downy Woodpeckers. *Ecology* 51(2):318-323.
13. Johnsgard, P. A. 1998. *The Birds of Nebraska*. University of Nebraska-Lincoln, (available from author).
14. Johnston, V. R. 1947. Breeding birds of the forest edge in Illinois. *Condor* 49(2):45-53.
15. Kahl, R. B., T. S. Baskett, J. A. Ellis, and J. N. Burroughs. 1985. Characteristics of summer habitats of selected nongame birds in Missouri. University of Missouri Agriculture Experiment Station Research Bulletin 1056. University of Missouri, Columbia, Missouri, USA.
16. Obermeyer, B. 1992. Effect of logging on breeding bird diversity in riparian forests on Fall River Wildlife Area. *Kansas Ornithological Society Bulletin* 43(3):21-27.
17. Peters, W. D. 1982. Control of sexual differences in winter foraging behavior of Downy Woodpeckers (*Picoides pubescens*). Dissertation, Ohio State University, Columbus, Ohio, USA.
18. Peterson, A. W. and T. C. Grubb, Jr. 1983. Artificial trees as a cavity substrate for woodpeckers. *Journal of Wildlife Management* 47(3):790-798.
19. Petit, D. R., K. E. Petit, T. C. Grubb, Jr., and L. J. Reichhardt. 1985. Habitat and snag selection by woodpeckers in a clear-cut: an analysis using artificial snags. *Wilson Bulletin* 97(4):525-533.
20. Romary, C. L. 1990. Evaluation of the Habitat Suitability Index Models for the Black-capped Chickadee and Downy Woodpecker. Emporia State University, Emporia, Kansas, USA.
21. Schroeder, R. L. 1982. Habitat suitability index models: Downy Woodpecker. Biological Report 82(10.38). U.S. Department of the Interior, Fish and Wildlife Service, Washington, D.C., USA.
22. Sedgwick, J. A. and F. L. Knopf. 1986. Cavity-nesting birds and the cavity-tree resource in plains cottonwood bottomlands. *Journal of Wildlife Management* 50(2):247-252.
23. Smith, K. G. 1977. Distribution of summer birds along a forest moisture gradient in an Ozark watershed. *Ecology* 58:810-819.
24. Smith, L. M. 1962. Winter ecology of Woodpeckers and Nuthatches in southeastern South Dakota. Dissertation, University of South Dakota, Vermillion, South Dakota, USA.
25. _____. 1973. Variation in the horizontal distribution of Downy Woodpeckers. *Iowa Bird Life* 18:23-24.
26. Stauffer, D. F. and L. B. Best. 1980. Habitat selection by birds of riparian communities: evaluating effects of habitat alterations. *Journal of Wildlife Management* 44(1):1-15.
27. Williams, J. B. 1975. Habitat utilization by four species of Woodpeckers in a central Illinois woodland. *American Midland Naturalist* 93(2):354-367.
28. Zimmerman, J. L. 1993. *The Birds of Konza*. University Press of Kansas, Lawrence, Kansas, USA.
29. Zimmerman, J. L. and J. L. Tatschl. 1975. Floodplain birds of Weston Bend, Missouri River. *Wilson Bulletin* 87(2):196-208.

Downy Woodpecker



Kansas Breeding Bird Atlas

Confirmed Breeding

Probable Breeding

Possible Breeding

Breeding Bird Survey

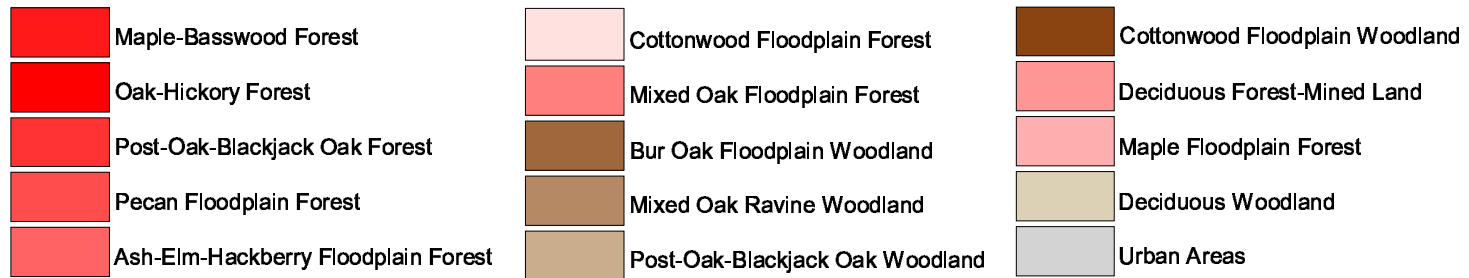
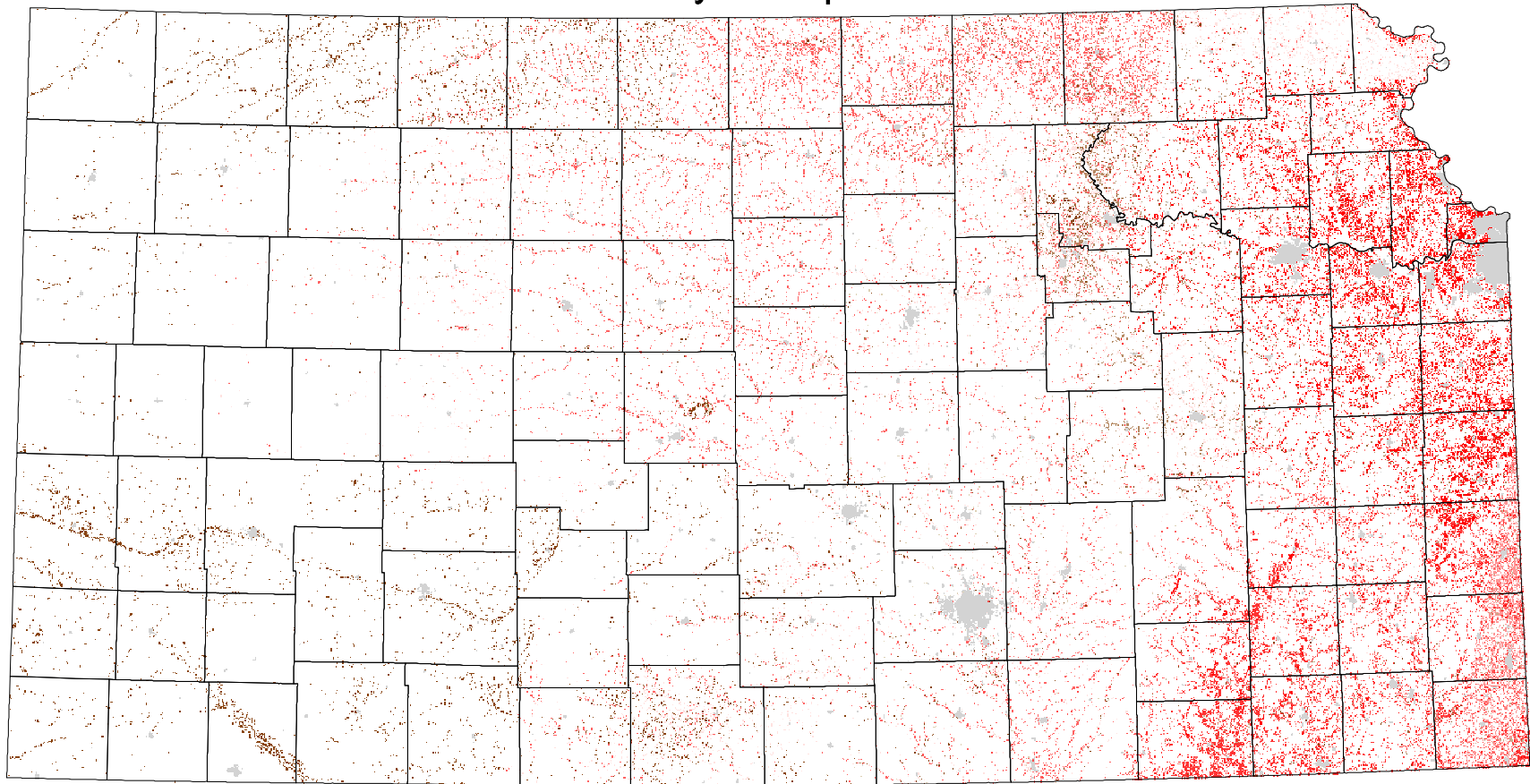
Birds of Kansas,
Horned Lark

Range from Johnsgard, 1998
The Birds of Nebraska

Habitat

All shaded counties will be included in the possible distribution of the species.

Downy Woodpecker



Minimum habitat area = 4 ha