

Habitat Model for Species: Spotted Sandpiper

Alpha Code: SPSA Status: Breeding

[Distribution Map](#)

[Habitat Map](#)

Landcover Category

0 - Comments

[KS GAP]

Habitat Restrictions

Map 30 m edge of 31,32,33,38,39,70, and 82.
Buffer 60 m around all selected habitats (thus other habitats not listed will also be mapped).

Comments

Johnsgard, 1981

During nonbreeding, typically found in shaded or sheltered watercourses, such as along forests or woodlands.

Oring et al., 1997

Nests in a variety of habitats (shoreline, sagebrush, grassland, and forest), within 300 m, normally within 100 m, of water's edge.

26 - Grass Playa Lake

Johnsgard, 1981

Oring et al., 1997

Thompson and Ely, 1989

27 - Salt Marsh/Prairie

Johnsgard, 1981

Oring et al., 1997

Thompson and Ely, 1989

28 - Spikerush Playa Lake

Johnsgard, 1981

Thompson and Ely, 1989

29 - Playa Lake

Johnsgard, 1981

Oring et al., 1997

Thompson and Ely, 1989

30 - Low or Wet Prairie

Johnsgard, 1981

Oring et al., 1997

Thompson and Ely, 1989

31 - Freshwater Marsh

[KS GAP]

Johnsgard, 1981

Weller and Spatcher, 1965

Thompson and Ely, 1989

30 m edge.
around edges
around edges
around edges

32 - Bulrush Marsh

[KS GAP]

Johnsgard, 1981

Stewart, 1975

Thompson and Ely, 1989

30 m edge.
around edges
around edges

33 - Cattail Marsh

[KS GAP]

Johnsgard, 1981

Weller and Spatcher, 1965

Stewart, 1975

Oring et al., 1997

Thompson and Ely, 1989

30 m edge.

38 - Forb Playa Lake

[KS GAP] 30 m edge.
Johnsgard, 1981
Stewart, 1975
Oring et al., 1997
Thompson and Ely, 1989

39 - Pondweed Aquatic Wetland - not mapped

[KS GAP] 30 m edge.
Johnsgard, 1981 around edges
Stewart, 1975
Oring et al., 1997 around edges
Thompson and Ely, 1989 around edges

70 - Weedy Marsh

[KS GAP] 30 m edge.
Johnsgard, 1981 around lake edges
Stewart, 1975
Thompson and Ely, 1989 around lake edges

82 - Water (Lake)

[KS GAP] 30 m edge.
Shackford, 1983 on sandy bank
Cialdini and Orians, 1944 Nesting 50-1000 feet from shore.
Johnsgard, 1981 around edges
Oring et al., 1997 around edges
Thompson and Ely, 1989 around edges
Johnsgard, 1979 around edges

82 - Water (River)

[KS GAP] 30 m edge.
Johnsgard, 1981 around edges (especially unvegetated shorelines)
Oring et al., 1997 around edges (especially unvegetated shorelines)
Thompson and Ely, 1989 around edges (especially unvegetated shorelines) one of the few shorebirds found along woodland

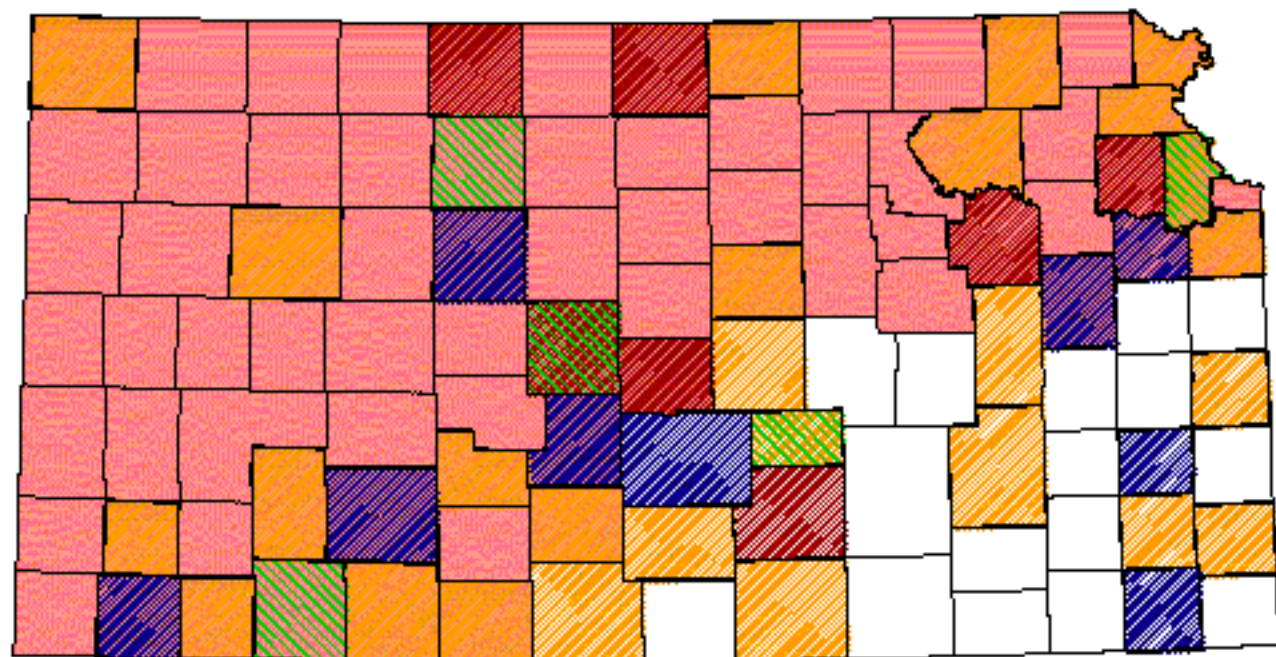
90 - Riverine Sand Flats and Bars - not mapped

Johnsgard, 1981
Rasmussen and Wright, 1990
Dinsmore et al., 1984
Oring et al., 1997
Thompson and Ely, 1989
Johnsgard, 1979




Reference List

1. Cialdini, R. and G. Orians. 1944. Nesting studies of the Spotted Sandpiper. *Passenger Pigeon* 6:79-81.
2. Dinsmore, J. J., K. H. Thomas, D. Koenig, C. P. Petersen, and M. D. Roosa. 1984. *Iowa Birds*. Iowa State University Press, Ames, Iowa, USA.
3. Johnsgard, P. A. 1979. *Birds of the Great Plains*. University of Nebraska Press, Lincoln, Nebraska, USA.
4. _____. 1981. *The Plovers, Sandpipers, and Snipes of the world*. University of Nebraska Press, Lincoln, Nebraska, USA.
5. Oring, L. W., E. M. Gray, and J. M. Reed. 1997. Spotted Sandpiper. A. Poole and F. Gill, editors. *The Birds of North America*. No. 289. The American Ornithologists' Union and The Academy of Natural Sciences, Philadelphia, Pennsylvania, USA.
6. Rasmussen, L. and P. Wright. 1990. *Wildlife impact assessment: Bonneville, McNary, The Dalles and John Day Project, Oregon and Washington*. U.S. Fish and Wildlife Service, Portland, Oregon, USA.
7. Shackford, J. S. 1983. Spotted Sandpiper chick caught in Cimmaron County, Oklahoma. *Bulletin of the Oklahoma Ornithological Society* 16(1):4-5.
8. Stewart, R. E. 1975. *Breeding birds of North Dakota*. Harrison Smith, Lund Press, Minneapolis, Minnesota, USA.
9. Thompson, M. C. and C. Ely. 1989. *Birds in Kansas: Volume I*. Public Education Series No. 11. University of Kansas Museum of Natural History, University Press of Kansas, Lawrence, Kansas, USA.
10. Weller, M. W. and C. S. Spatcher. 1965. Role of habitat in the distribution and abundance of marsh birds. *Special Report 43*. Agricultural and Home Economics Experiment Station. Iowa State College, Ames, Iowa, USA.


Spotted Sandpiper




Kansas Breeding Bird Atlas

-  Confirmed Breeding
-  Probable Breeding
-  Possible Breeding

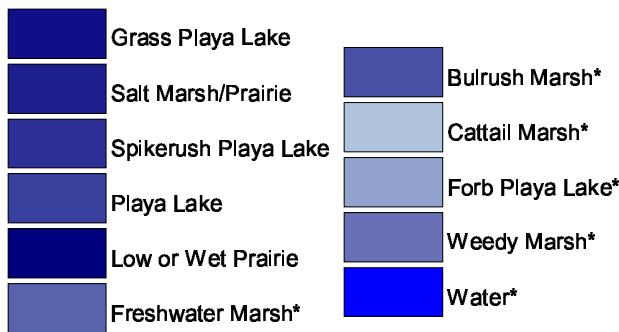
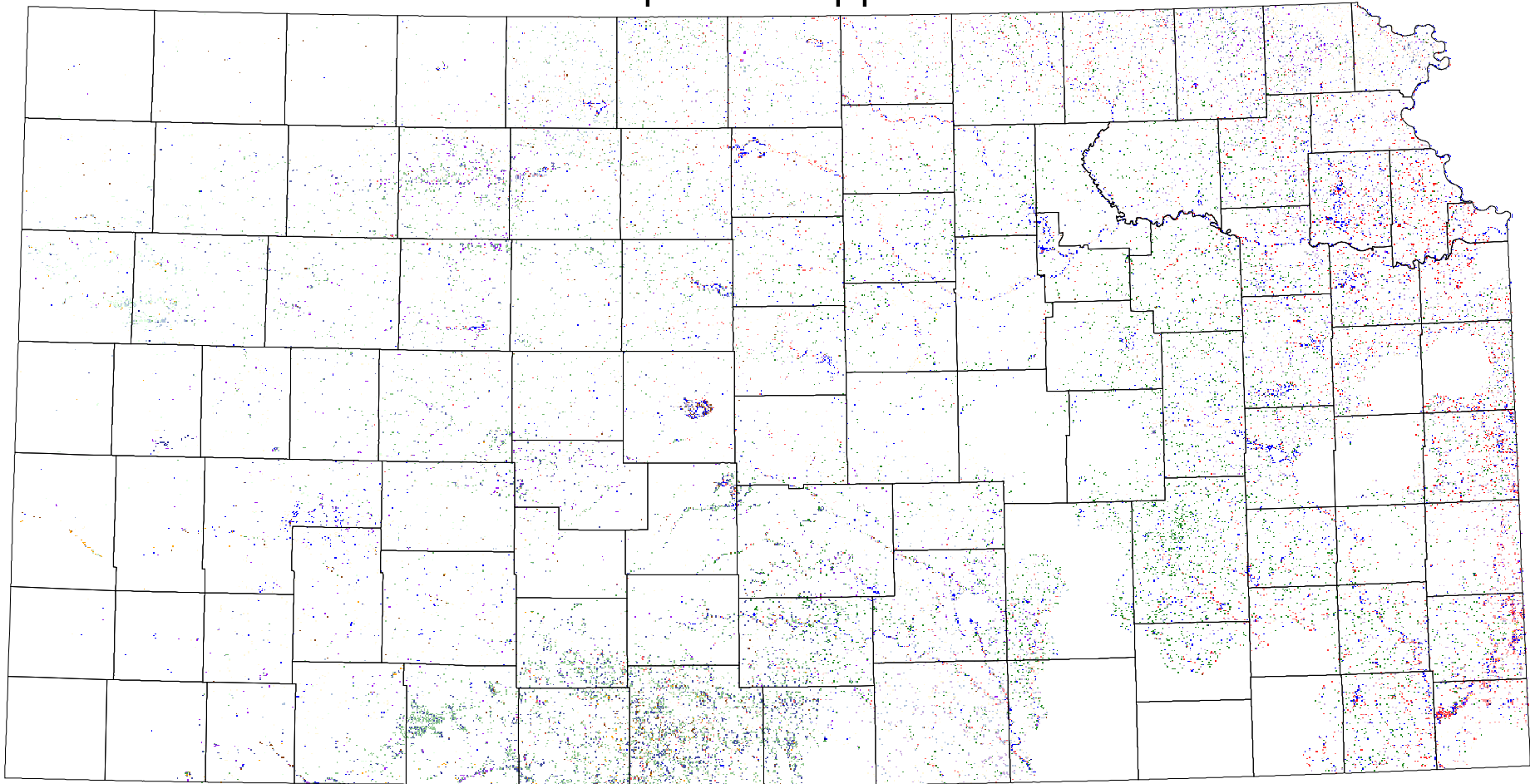
 Breeding Bird Survey

 Birds of Kansas,
Horned Lark

 Range from Johnsgard, 1888
The Birds of Nebraska

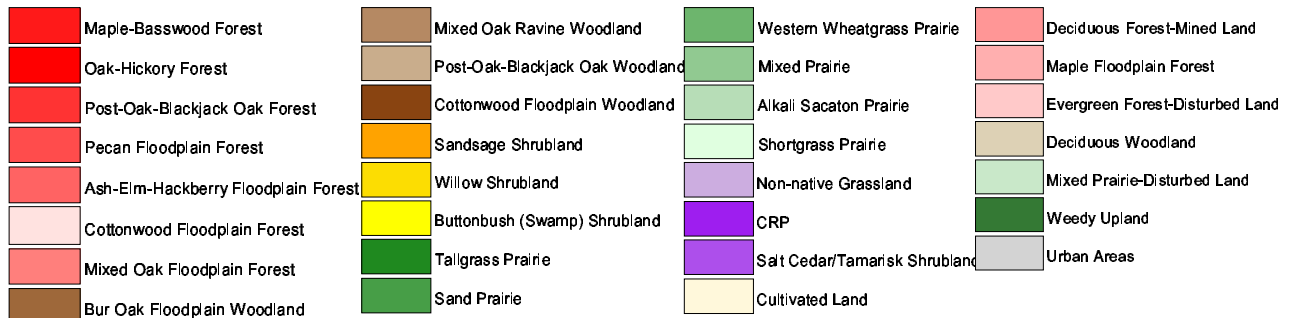
All shaded counties will be included in the distribution of the species.

Spotted Sandpiper



Main habitats

* 30 m edge



60 m buffer around main habitats (nesting)