

Habitat Model for Species: Northern Pintail

Alpha Code: **NOPI** Status: **Resident**

[Distribution Map](#)

[Habitat Map](#)

Landcover Category

0 - Comments

Habitat Restrictions

Comments

[KS GAP] Map habitats 17, 18, 19, 20, 22, 40, 41, and 44 if within 1620 m of habitats 26, 27, 28, 29, 30, 31, 32, 33, 38, 39, 70, or 82.

Miller and Duncan, 1999

Suchy and Anderson, 1987

Bellrose, 1976

Greenwood et al., 1995

Klett et al., 1988
Rhodes, 1978

Austin and Miller, 1995

17 - Tallgrass Prairie

[KS GAP] Within 1.6 km of selected wetland habitats.
Klett et al., 1988

18 - Sand Prairie

[KS GAP] Within 1.6 km of selected wetland habitats.
Keith, 1961

19 - Sandstone Prairie - not mapped

[KS GAP] Within 1.6 km of selected wetland habitats.

20 - Western Wheatgrass

[KS GAP] Within 1.6 km of selected wetland habitats.
Duebbert et al., 1986

22 - Mixed Prairie

[KS GAP] Within 1.6 km of selected wetland habitats.
Duebbert et al., 1986
Kruse and Bowen, 1996
Keith, 1961

26 - Grass Playa Lake

Krapu, 1974
Kantrud and Stewart, 1977

27 - Salt Marsh/Prairie

Krapu, 1974
Kantrud and Stewart, 1977
Ruwaldt et al., 1979
Keith, 1961

28 - Spikerush Playa Lake

Krapu, 1974
Kantrud and Stewart, 1977
Ruwaldt et al., 1979

Pintails show a stronger predilection to nest in sparse cover, burned areas, and grain stubble than do other species and they can nest relatively farther Literature review. HSI model assumes at least 6 optimum (semipermanent) wetlands per 259-ha section of land are present.

Tend to locate their nests farther from water than other ground-nesting ducks, sometimes a mile or more but most often within 100 yards; the average is about 40 yards. Vegetation at the nest site varies greatly with geography.

Most nested in road rights-of-way based on availability, and in grass based on percentage.

breeding in Typha dominated playas - no match with alliances.

Characteristically nests in more open sites with less vegetative cover than other upland-nesting ducks.

29 - Playa Lake

Krapu, 1974
Kantrud and Stewart, 1977

30 - Low or Wet Prairie

Krapu, 1974
Kantrud and Stewart, 1977
Ruwaldt et al., 1979

31 - Freshwater Marsh

Krapu, 1974
Kantrud and Stewart, 1977
Mack and Flake, 1980
Stewart and Kantrud, 1974
Ruwaldt et al., 1979

edge of stock pond

32 - Bulrush Marsh

Kantrud and Stewart, 1977
Mack and Flake, 1980
Stewart and Kantrud, 1974
Ruwaldt et al., 1979

edge of stock pond

33 - Cattail Marsh

Kantrud and Stewart, 1977
Mack and Flake, 1980
Stewart and Kantrud, 1974
Ruwaldt et al., 1979

edge of stock pond

38 - Forb Playa Lake

Kantrud and Stewart, 1977

39 - Pondweed Aquatic

Wetland - not mapped

Kantrud and Stewart, 1977
Ruwaldt et al., 1979

stock ponds and dugouts

40 - Non-native Grassland

[KS GAP] Within 1.6 km of selected wetland habitats.
Duebbert and Lokemoen, 1976
Klett et al., 1988
Oetting and Cassel, 1971

highway right-of-way

41 - CRP

[KS GAP] Within 1.6 km of selected wetland habitats.
Luttschwager et al., 1994
Kantrud, 1993

44 - Cultivated Land

[KS GAP] Within 1.6 km of selected wetland habitats.
Klett et al., 1988
Duebbert and Kantrud, 1987
Higgins, 1977

nested in cropland more than any other duck species.
no-till winter wheat.
nests found in summer fallow, mulched stubble,
standing stubble, and growing small grain.
Only dabbling duck that prefers tilled cropland (mainly
grain stubble) for nesting.

Austin and Miller, 1995

70 - Weedy Marsh

Kantrud and Stewart, 1977
Mack and Flake, 1980

edge of stock pond

82 - Water (Lake)

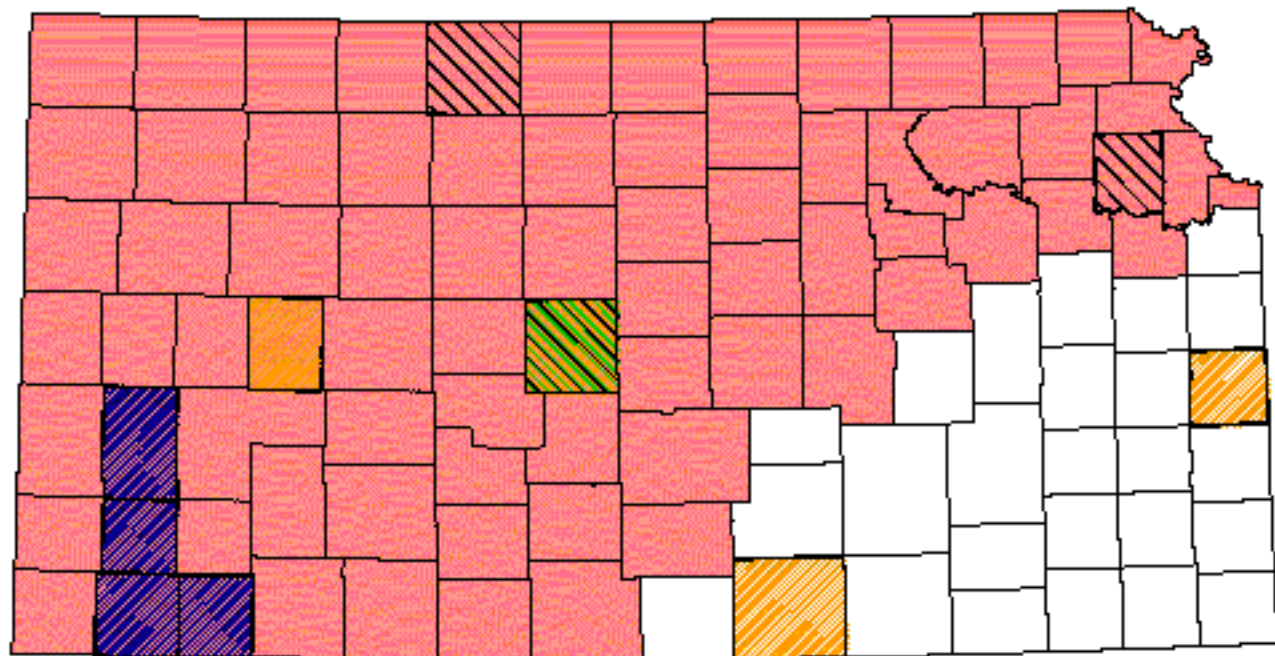
Mack and Flake, 1980
Ruwaldt et al., 1979

stock pond - limit size?
stock ponds and dugouts

Reference List

1. Austin, J. E. and M. R. Miller. 1995. Northern Pintail. A. Poole and F. Gill, editors. The Birds of North America. No. 163. The American Ornithologists' Union and The Academy of Natural Sciences, Philadelphia, Pennsylvania, USA.
2. Bellrose, F. C. 1976. Ducks, Geese & Swans of North America. Second edition. Stackpole Books, Harrisburg, Pennsylvania, USA.
3. Duebber, H. F. and H. A. Kantrud. 1987. Use of no-till winter wheat by nesting ducks in North Dakota. *Journal of Soil and Water Conservation* 42(1):50-53.
4. Duebber, H. F. and J. T. Lokemoen. 1976. Duck nesting in fields of undisturbed grass-legume cover. *Journal of Wildlife Management* 40(1):39-49.
5. Duebber, H. F., J. T. Lokemoen, and D. E. Sharp. 1986. Nest sites of ducks in grazed mixed-grass prairie in North Dakota. *Prairie Naturalist* 18(2):99-108.
6. Greenwood, R. J., A. B. Sargeant, D. H. Johnson, L. M. Cowardin, and T. L. Shaffer. 1995. Factors associated with duck nest success in the prairie pothole region of Canada. *Wildlife Monographs* 128:1-57.
7. Higgins, K. F. 1977. Duck nesting in intensively farmed areas of North Dakota. *Journal of Wildlife Management* 41(2):232-242.
8. Kantrud, H. A. 1993. Duck nest success on Conservation Reserve Program land in the prairie pothole region. *Journal of Soil and Water Conservation* 48(3):238-242.
9. Kantrud, H. A. and R. E. Stewart. 1977. Use of natural basin wetlands by breeding waterfowl in North Dakota. *Journal of Wildlife Management* 41(2):243-253.
10. Keith, L. B. 1961. A study of waterfowl ecology on small impoundments in southeastern Alberta. *Wildlife Monographs* 6:1-88.
11. Klett, A. T., T. L. Shaffer, and D. H. Johnson. 1988. Duck nest success in the prairie pothole region. *Journal of Wildlife Management* 52(3):431-440.
12. Krapu, G. L. 1974. Foods of breeding Pintails in North Dakota. *Journal of Wildlife Management* 38(3):408-417.
13. Kruse, A. D. and B. S. Bowen. 1996. Effects of grazing and burning on densities and habitats of breeding ducks in North Dakota. *Journal of Wildlife Management* 60(2):233-246.
14. Luttschwager, K. A., K. F. Higgins, and J. A. Jenks. 1994. Effects of emergency haying on duck nesting in Conservation Reserve Program fields, South Dakota. *Wildlife Society Bulletin* 22:403-408.
15. Mack, G. D. and L. D. Flake. 1980. Habitat relationships of waterfowl broods on South Dakota stock ponds. *Journal of Wildlife Management* 44(3):695-700.
16. Miller, M. R. and D. C. Duncan. 1999. The Northern Pintail in North America; status and conservation needs of a struggling population. *Wildlife Society Bulletin* 27(3):788-800.
17. Oetting, R. B. and J. F. Cassel. 1971. Waterfowl nesting on interstate highway right-of-way in North Dakota. *Journal of Wildlife Management* 35:774-781.
18. Rhodes, M. J. 1978. Habitat preferences of breeding waterfowl on the Texas high plains. Thesis, Texas Tech University, Lubbock, Texas, USA.
19. Ruwaldt, J. J., Jr., L. D. Flake, and J. M. Gates. 1979. Waterfowl pair use of natural and man-made wetlands in South Dakota. *Journal of Wildlife Management* 43(2):375-383.
20. Stewart, R. E. and H. A. Kantrud. 1974. Breeding waterfowl populations in the Prairie Pothole Region of North Dakota. *Condor* 76:70-79.
21. Suchy, W. J. and S. H. Anderson. 1987. Habitat suitability index models: Northern Pintail. Biological Report 82(10.145). U.S. Department of the Interior, Fish and Wildlife Service, Washington, D.C., USA.

Northern Pintail




Kansas Breeding Bird Atlas

 Confirmed Breeding

 Probable Breeding

 Possible Breeding

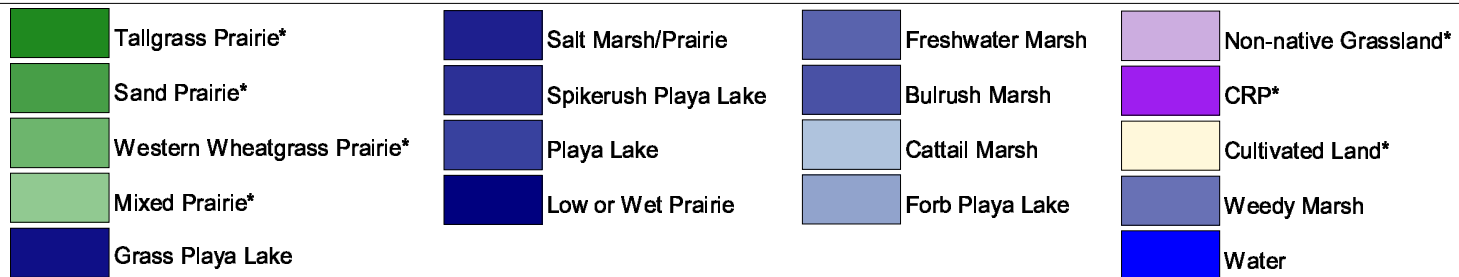
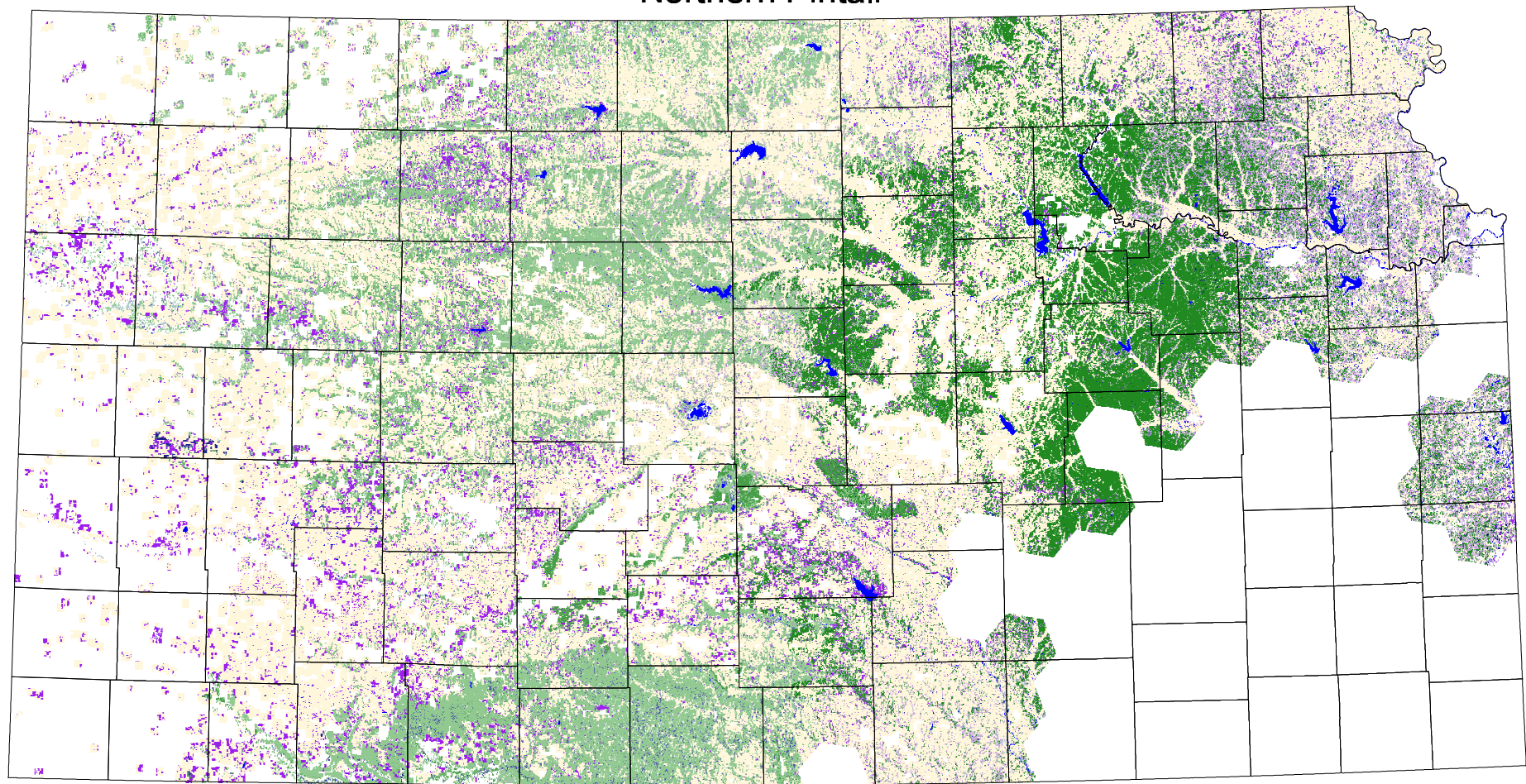
 Breeding Bird Survey

 Birds of Kansas,
Horned Lark

 Range from Johnsgard, 1882
The Birds of Nebraska

All shaded counties will be included in the distribution of the species.

Northern Pintail



* if within 1620 m of other mapped habitats