

# Habitat Model for Species: Gadwall

Alpha Code: GADW Status: Resident

[Distribution Map](#)

[Habitat Map](#)

## Landcover Category

### **0 - Comments**

Bellrose, 1976

### **Habitat Restrictions**

Ringelman, 1990 Although nests average 300 m from water sites up to 1.9 km away may be used.

Sousa, 1985

Greenwood et al., 1995

Klett et al., 1988

Leschack et al., 1997

[KS GAP] Map habitats 17, 18, 19, 20, 22, 40, 41, and 44 if within 1620 m of habitats 26, 27, 28, 29, 30, 31, 32, 33, 38, 39, 70, or 82.

### **17 - Tallgrass Prairie**

Klett et al., 1984

Klett et al., 1988

[KS GAP] Within 1.6 km of selected wetland habitats.

### **18 - Sand Prairie**

Keith, 1961

[KS GAP] Within 1.6 km of selected wetland habitats.

### **19 - Sandstone Prairie - not**

#### **mapped**

[KS GAP] Within 1.6 km of selected wetland habitats.

### **20 - Western Wheatgrass**

Duebber et al., 1986

Lokemoen et al., 1990

[KS GAP] Within 1.6 km of selected wetland habitats.

### **22 - Mixed Prairie**

Duebber et al., 1983

Duebber et al., 1986

Kruse and Bowen, 1996

Keith, 1961

[KS GAP] Within 1.6 km of selected wetland habitats.

### **26 - Grass Playa Lake**

Kantrud and Stewart, 1977

### **27 - Salt Marsh/Prairie**

Crabtree et al., 1989

Kantrud and Stewart, 1977

Ruwaldt et al., 1979

Keith, 1961

### **28 - Spikerush Playa Lake**

Kantrud and Stewart, 1977

Ruwaldt et al., 1979

### **Comments**

Most nests are located on upland areas less than 100 yards from water, but can be several hundred yards away. Choice of vegetation for nesting depends on availability, density, and height.

literature review. HSI considers pair, nesting, and brood habitat.

Most nested in road rights-of-way based on availability, and in grass based on percentage.

Also limited nesting in right-of ways, wetlands, odd areas, and row cropland.

Breeds mainly in mixed prairie, parkland, shortgrass, and tallgrass prairie. Brood habitat: Emergent vegetation provides escape cover, and open water with submerged vegetation provides food for

nesting in snowberry patches on an island.

### **29 - Playa Lake**

Crabtree et al., 1989  
Kantrud and Stewart, 1977

### **30 - Low or Wet Prairie**

Kantrud and Stewart, 1977  
Ruwaldt et al., 1979

### **31 - Freshwater Marsh**

Ringelman, 1990  
Kantrud and Stewart, 1977  
Mack and Flake, 1980  
Stewart and Kantrud, 1974  
Ruwaldt et al., 1979  
Kruse and Bowen, 1996

edge of stock pond

### **32 - Bulrush Marsh**

Ringelman, 1990  
Kantrud and Stewart, 1977  
Mack and Flake, 1980  
Ruwaldt et al., 1979

edge of stock pond

### **33 - Cattail Marsh**

Ringelman, 1990  
Kantrud and Stewart, 1977  
Mack and Flake, 1980  
Ruwaldt et al., 1979

edge of stock pond

### **38 - Forb Playa Lake**

Kantrud and Stewart, 1977

### **39 - Pondweed Aquatic Wetland - not mapped**

Kantrud and Stewart, 1977  
Ruwaldt et al., 1979

stock ponds and dugouts

### **40 - Non-native Grassland**

Hines and Mitchell, 1983

Ringelman, 1990  
Klett et al., 1984  
Willms and Crawford, 1989  
Duebbert and Lokemoen, 1976  
Klett et al., 1988  
Oetting and Cassel, 1971  
Lokemoen et al., 1990  
[KS GAP]

Within 1.6 km of selected wetland habitats.

nested in snowberry and forb patches in brome grass on islands.

Avg. distance of nest to a wetland was 351 m

highway right-of-way

### **41 - CRP**

Ringelman, 1990  
Klett et al., 1984  
Luttschwager et al., 1994  
Kantrud, 1993  
[KS GAP]

Within 1.6 km of selected wetland habitats.

### **44 - Cultivated Land**

Duebbert and Kantrud, 1987  
Higgins, 1977  
Lokemoen et al., 1990  
[KS GAP]

Within 1.6 km of selected wetland habitats.

no-till winter wheat.  
nests found in growing small grain.  
alfalfa or wheat stubble

### **70 - Weedy Marsh**

Kantrud and Stewart, 1977  
Mack and Flake, 1980

edge of stock pond

## **82 - Water (Lake)**

Mack and Flake, 1980  
Ruwaldt et al., 1979

stock pond - limit size?  
stock ponds and dugouts

## **82 - Water (River)**

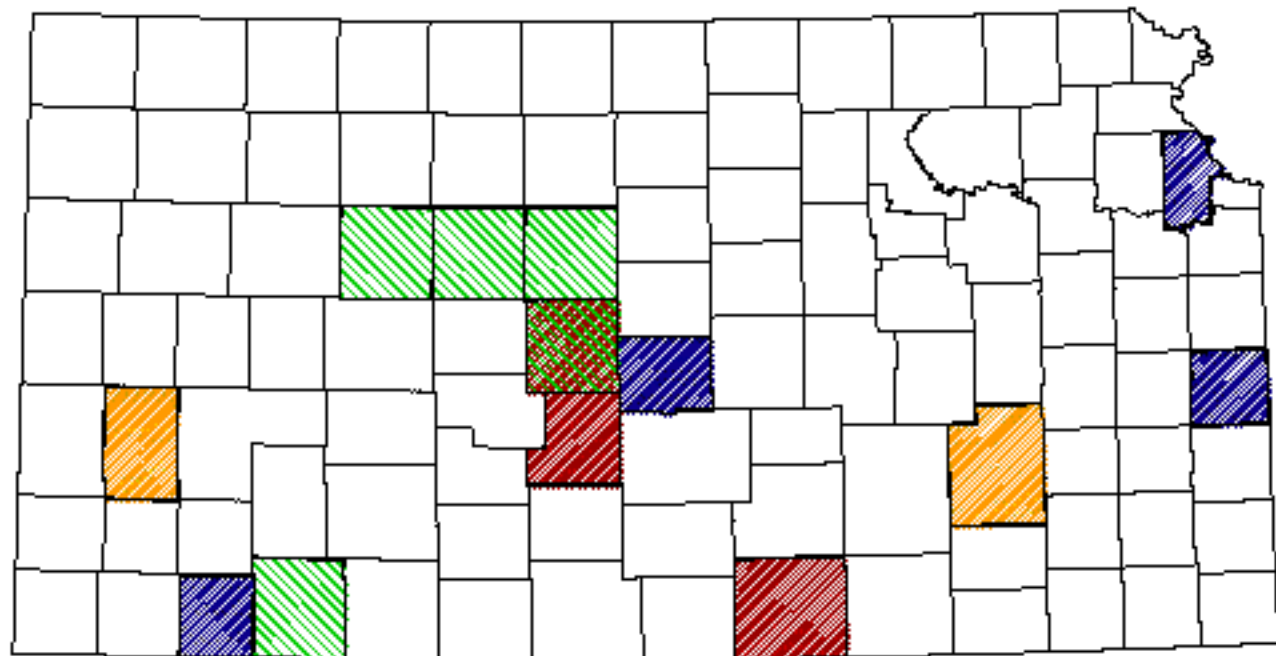
Ruwaldt et al., 1979

intermittent streams only

### Reference List


1. Bellrose, F. C. 1976. Ducks, Geese & Swans of North America. Second edition. Stackpole Books, Harrisburg, Pennsylvania, USA.
2. Crabtree, R. L., L. S. Broome, and M. L. Wolfe. 1989. Effects of habitat characteristics on Gadwall nest predation and nest-site selection. *Journal of Wildlife Management* 53(1):129-137.
3. Duebber, H. F. and H. A. Kantrud. 1987. Use of no-till winter wheat by nesting ducks in North Dakota. *Journal of Soil and Water Conservation* 42(1):50-53.
4. Duebber, H. F. and J. T. Lokemoen. 1976. Duck nesting in fields of undisturbed grass-legume cover. *Journal of Wildlife Management* 40(1):39-49.
5. Duebber, H. F., J. T. Lokemoen, and D. E. Sharp. 1983. Concentrated nesting of Mallards and Gadwalls on Miller Lake Island, North Dakota. *Journal of Wildlife Management* 47(3):729-740.
6. \_\_\_\_\_. 1986. Nest sites of ducks in grazed mixed-grass prairie in North Dakota. *Prairie Naturalist* 18(2):99-108.
7. Greenwood, R. J., A. B. Sargeant, D. H. Johnson, L. M. Cowardin, and T. L. Shaffer. 1995. Factors associated with duck nest success in the prairie pothole region of Canada. *Wildlife Monographs* 128:1-57.
8. Higgins, K. F. 1977. Duck nesting in intensively farmed areas of North Dakota. *Journal of Wildlife Management* 41(2):232-242.
9. Hines, K. E. and G. J. Mitchell. 1983. Gadwall nest-site selection and nesting success. *Journal of Wildlife Management* 47(4):1063-1071.
10. Kantrud, H. A. 1993. Duck nest success on Conservation Reserve Program land in the prairie pothole region. *Journal of Soil and Water Conservation* 48(3):238-242.
11. Kantrud, H. A. and R. E. Stewart. 1977. Use of natural basin wetlands by breeding waterfowl in North Dakota. *Journal of Wildlife Management* 41(2):243-253.
12. Keith, L. B. 1961. A study of waterfowl ecology on small impoundments in southeastern Alberta. *Wildlife Monographs* 6:1-88.
13. Klett, A. T., H. F. Duebber, and G. L. Heismeyer. 1984. Use of seeded native grasses as nesting cover by ducks. *Wildlife Society Bulletin* 12(2):134-138.
14. Klett, A. T., T. L. Shaffer, and D. H. Johnson. 1988. Duck nest success in the prairie pothole region. *Journal of Wildlife Management* 52(3):431-440.
15. Kruse, A. D. and B. S. Bowen. 1996. Effects of grazing and burning on densities and habitats of breeding ducks in North Dakota. *Journal of Wildlife Management* 60(2):233-246.
16. Leschack, C. R., S. K. McKnight, and G. R. Hepp. 1997. Gadwall. A. Poole and F. Gill, editors. *The Birds of North America*. No. 283. The American Ornithologists' Union and The Academy of Natural Sciences, Philadelphia, Pennsylvania, USA.
17. Lokemoen, J. T., H. F. Duebber, and D. E. Sharp. 1990. Homing and reproductive habits of Mallards, Gadwalls, and Blue-winged Teal. *Wildlife Monographs* 106:1-28.
18. Luttschwager, K. A., K. F. Higgins, and J. A. Jenks. 1994. Effects of emergency haying on duck nesting in Conservation Reserve Program fields, South Dakota. *Wildlife Society Bulletin* 22:403-408.
19. Mack, G. D. and L. D. Flake. 1980. Habitat relationships of waterfowl broods on South Dakota stock ponds. *Journal of Wildlife Management* 44(3):695-700.
20. Oetting, R. B. and J. F. Cassel. 1971. Waterfowl nesting on interstate highway right-of-way in North Dakota. *Journal of Wildlife Management* 35:774-781.
21. Ringelman, J. K. 1990. Life history traits and management of the Gadwalls. *Waterfowl Management Handbook*. Fish and Wildlife Leaflet. 13.1.2. U.S. Fish and Wildlife Service, Washington, D.C., USA.
22. Ruwaldt, J. J., Jr., L. D. Flake, and J. M. Gates. 1979. Waterfowl pair use of natural and man-made wetlands in South Dakota. *Journal of Wildlife Management* 43(2):375-383.
23. Sousa, P. J. 1985. Habitat suitability index model: Gadwall. *Biological Report* 82(10.100). U.S. Department of the Interior, Fish and Wildlife Service, Washington, D.C., USA.
24. Stewart, R. E. and H. A. Kantrud. 1974. Breeding waterfowl populations in the Prairie Pothole Region of North Dakota. *Condor* 76:70-79.
25. Willms, M. A. and R. D. Crawford. 1989. Use of earthen islands by nesting ducks in North Dakota. *Journal of Wildlife Management* 53(2):411-417.

# Gadwall




## Kansas Breeding Bird Atlas

 Confirmed Breeding

 Probable Breeding

 Possible Breeding

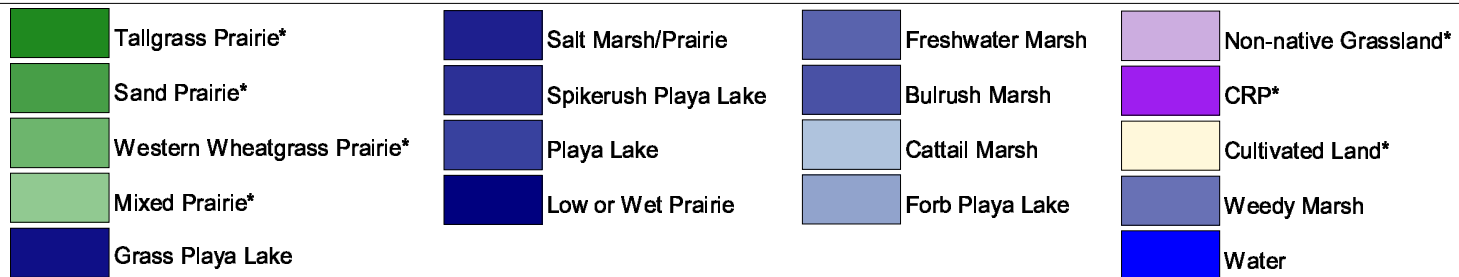
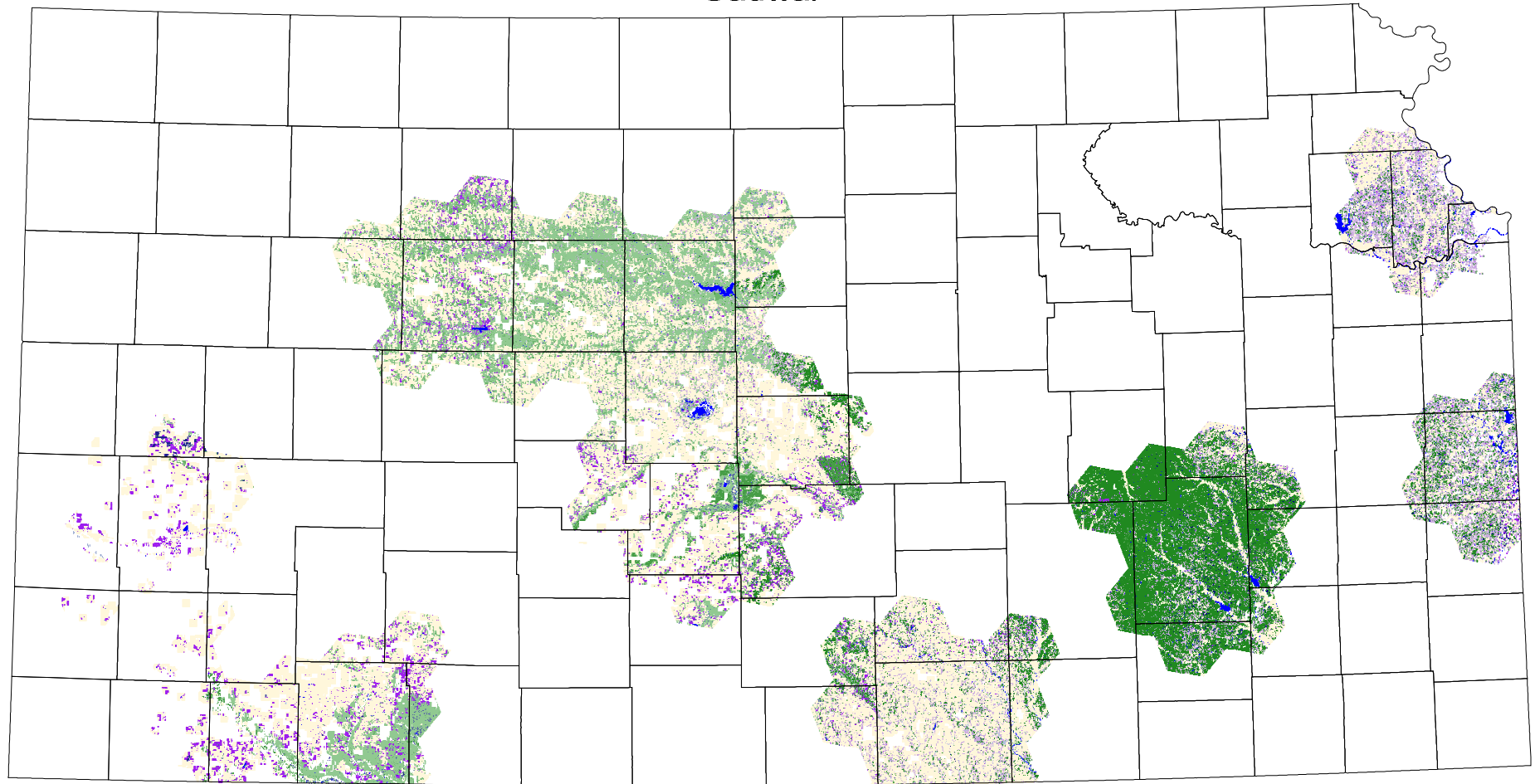
 Breeding Bird Survey

 Birds of Kansas,  
*Horned Lark*

 Range from Johnson, 1882  
*The Birds of Nebraska*

All shaded counties will be included in the distribution of the species.

# Gadwall



\* if within 1620 m of other mapped habitats