

# Habitat Model for Species: Blue-winged Teal

Alpha Code: BWTE Status: Resident

[Distribution Map](#)

[Habitat Map](#)

## Landcover Category

### **0 - Comments**

Klett et al., 1988

Bellrose, 1976 Nests have been found as far away as 1 mile; numerous studies list avg. distances from 71-661 ft, with an average of 125 ft.

Rhodes, 1978

Sousa, 1985

Greenwood et al., 1995

Mulhern et al., 1985

[KS GAP] Map habitats 17, 18, 19, 20, 22, 40, 41, and 44 if within 1620 m of habitats 26, 27, 28, 29, 30, 31, 32, 33, 38, 39, 70, or 82.

### Habitat Restrictions

### Comments

Also limited nesting in right-of ways, wetlands, odd areas, and row cropland.

breeding in Typha dominated playas - no match with alliances.

summary of literature.

Most nested in road rights-of-way based on availability, and in grass based on percentage.

Pairs used wetlands disproportionately in three of four years, but the structure of wetlands they chose varied annually. Broods were stenotopic (consistent with time, despite variation in available habitats) in their selection of wetlands.

### **17 - Tallgrass Prairie**

Klett et al., 1984

Klett et al., 1988

Bennett, 1938

Fleskes and Klaas, 1991

Burgess, 1965

[KS GAP]

Within 1.6 km of selected wetland habitats.

### **18 - Sand Prairie**

Burgess, 1965

Keith, 1961

[KS GAP]

Within 1.6 km of selected wetland habitats.

### **19 - Sandstone Prairie - not mapped**

Fleskes and Klaas, 1991

Burgess, 1965

[KS GAP]

Within 1.6 km of selected wetland habitats.

### **20 - Western Wheatgrass**

Duebber et al., 1986

Lokemoen et al., 1990

[KS GAP]

Within 1.6 km of selected wetland habitats.

### **22 - Mixed Prairie**

Burgess, 1965

Kruse and Bowen, 1996

Duebber et al., 1986

Keith, 1961

[KS GAP]

Within 1.6 km of selected wetland habitats.

### **26 - Grass Playa Lake**

Kantrud and Stewart, 1977

Swanson, 1974

Drewien and Springer, 1969

### **27 - Salt Marsh/Prairie**

Kantrud and Stewart, 1977

Swanson, 1974

Drewien and Springer, 1969

Ruwaldt et al., 1979

Keith, 1961

## **28 - Spikerush Playa Lake**

Kantrud and Stewart, 1977  
Rothe, 1977  
Swanson, 1974  
Drewien and Springer, 1969  
Ruwaldt et al., 1979

## **29 - Playa Lake**

Kantrud and Stewart, 1977  
Swanson, 1974  
Drewien and Springer, 1969

## **30 - Low or Wet Prairie**

Kantrud and Stewart, 1977  
Bennett, 1938  
Rothe, 1977  
Miller, 1976  
Swanson, 1974  
Drewien and Springer, 1969  
Bellrose, 1976  
Ruwaldt et al., 1979

Distance to water: range 4.6-237.7 m , mean = 55 m.

## **31 - Freshwater Marsh**

Kantrud and Stewart, 1977  
Mack and Flake, 1980  
Bennett, 1938  
Swanson and Meyer, 1977  
Krapu et al., 1970  
Swanson, 1974  
Drewien and Springer, 1969  
Bellrose, 1976  
Kruse and Bowen, 1996  
Stewart and Kantrud, 1974  
Ruwaldt et al., 1979

edge of stock pond

## **32 - Bulrush Marsh**

Kantrud and Stewart, 1977  
Mack and Flake, 1980  
Bennett, 1938  
Rothe, 1977  
Swanson and Meyer, 1977  
Swanson, 1974  
Drewien and Springer, 1969  
Bellrose, 1976  
Stewart and Kantrud, 1974  
Ruwaldt et al., 1979

edge of stock pond

## **33 - Cattail Marsh**

Kantrud and Stewart, 1977  
Mack and Flake, 1980  
Bennett, 1938  
Rothe, 1977  
Swanson and Meyer, 1977  
Swanson, 1974  
Drewien and Springer, 1969  
Bellrose, 1976  
Stewart and Kantrud, 1974  
Ruwaldt et al., 1979

edge of stock pond

## **34 - Fen - not mapped**

Miller, 1976

Distance to water: range 4.6-237.7 m , mean = 55 m.

### **38 - Forb Playa Lake**

Kantrud and Stewart, 1977  
Drewien and Springer, 1969

### **39 - Pondweed Aquatic**

#### **Wetland - not mapped**

Kantrud and Stewart, 1977  
Drewien and Springer, 1969  
Ruwaldt et al., 1979

### **40 - Non-native Grassland**

Klett et al., 1984  
Duebbert and Lokemoen, 1976

Klett et al., 1988  
Bennett, 1938  
Miller, 1976  
Fleskes and Klaas, 1991  
Krapu et al., 1970

Burgess, 1965  
Bellrose, 1976  
Oetting and Cassel, 1971  
Willms and Crawford, 1989  
Lokemoen et al., 1990  
[KS GAP] Within 1.6 km of selected wetland habitats.

### **41 - CRP**

Klett et al., 1984  
Luttschwager et al., 1994  
Kantrud, 1993  
[KS GAP]

### **44 - Cultivated Land**

Bennett, 1938  
Duebbert and Kantrud, 1987  
Burgess, 1965  
Higgins, 1977

Lokemoen et al., 1990  
[KS GAP] Within 1.6 km of selected wetland habitats.

### **70 - Weedy Marsh**

Kantrud and Stewart, 1977  
Mack and Flake, 1980  
Bennett, 1938  
Bellrose, 1976

### **82 - Water (Lake)**

Mack and Flake, 1980  
Drewien and Springer, 1969  
Ruwaldt et al., 1979

### **82 - Water (River)**

Ruwaldt et al., 1979

stock ponds and dugouts

Avg. distance of nest to a wetland was 256 m, max. 1000 m

Distance to water: range 4.6-237.7 m , mean = 55 m.

The mean distance of BWTE nests from water was 314 ft. (45 -900)

highway right-of-way

limited to alfalfa.  
no-till winter wheat.  
alfalfa and limited nests in small grain.  
nests found in summer fallow, mulched stubble,  
standing stubble, and growing small grain.  
alfalfa or wheat stubble

edge of stock pond

stock pond - limit size?  
deep marshes.  
stock ponds and dugouts

intermittent streams only

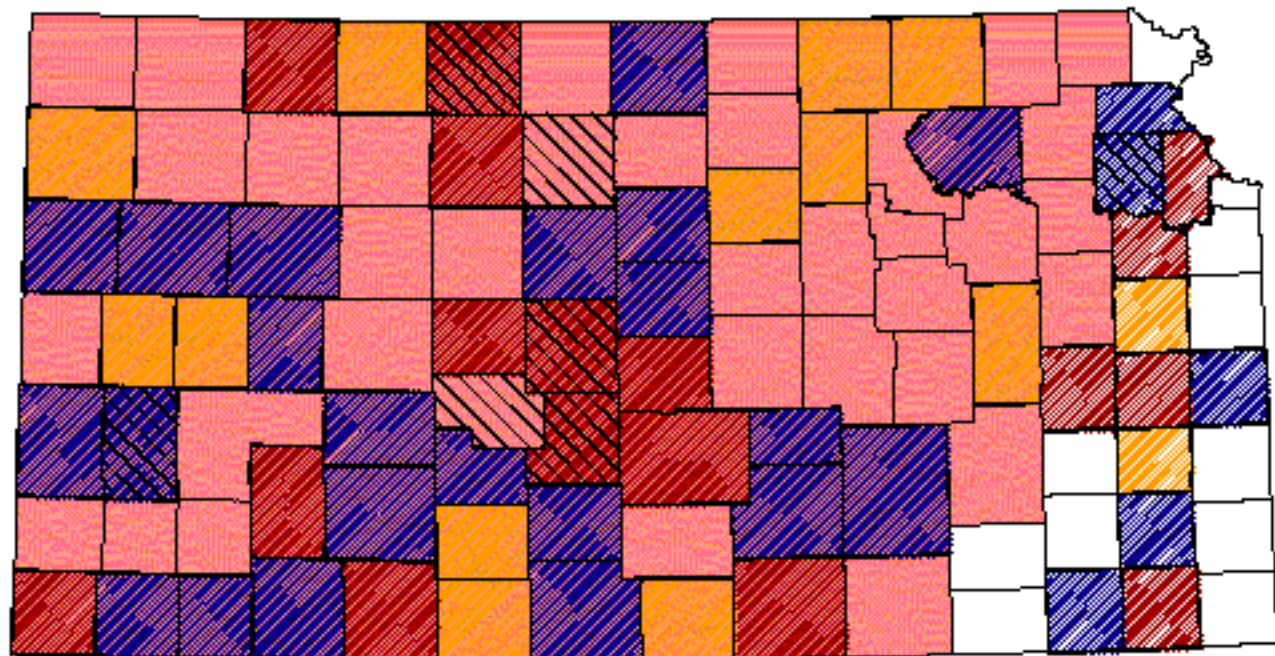
#### Reference List

1. Bellrose, F. C. 1976. Ducks, Geese & Swans of North America. Second edition. Stackpole Books, Harrisburg, Pennsylvania, USA.
2. Bennett, L. J. 1938. The blue-winged teal. Collegiate Press, Ames, Iowa, USA.
3. Burgess, H. H. 1965. Blue-winged teal nesting success as related to land use. *Journal of Wildlife Management* 29(1):89-95.
4. Drewien, R. C. and P. F. Springer. 1969. Ecological relationships of breeding blue-winged teal to prairie potholes. Pages 102-115 in Anonymous, editor. Saskatoon wetlands seminar. Canadian Wildlife Service, Ottawa, Canada.
5. Duebbert, H. F. and H. A. Kantrud. 1987. Use of no-till winter wheat by nesting ducks in North Dakota. *Journal of Soil and Water Conservation* 42(1):50-53.
6. Duebbert, H. F. and J. T. Lokemoen. 1976. Duck nesting in fields of undisturbed grass-legume cover. *Journal of Wildlife Management* 40(1):39-49.
7. Duebbert, H. F., J. T. Lokemoen, and D. E. Sharp. 1986. Nest sites of ducks in grazed mixed-grass prairie in North Dakota. *Prairie Naturalist* 18(2):99-108.
8. Fleskes, J. P. and E. E. Klaas. 1991. Dabbling duck recruitment in relation to habitat and predators at Union Slough National Wildlife Refuge, Iowa. Fish and Wildlife Technical Report 32. U.S. Fish and Wildlife Service, Washington, D.C.,

USA.

9. Greenwood, R. J., A. B. Sargeant, D. H. Johnson, L. M. Cowardin, and T. L. Shaffer. 1995. Factors associated with duck nest success in the prairie pothole region of Canada. *Wildlife Monographs* 128:1-57.
10. Higgins, K. F. 1977. Duck nesting in intensively farmed areas of North Dakota. *Journal of Wildlife Management* 41(2):232-242.
11. Kantrud, H. A. 1993. Duck nest success on Conservation Reserve Program land in the prairie pothole region. *Journal of Soil and Water Conservation* 48(3):238-242.
12. Kantrud, H. A. and R. E. Stewart. 1977. Use of natural basin wetlands by breeding waterfowl in North Dakota. *Journal of Wildlife Management* 41(2):243-253.
13. Keith, L. B. 1961. A study of waterfowl ecology on small impoundments in southeastern Alberta. *Wildlife Monographs* 6:1-88.
14. Klett, A. T., H. F. Duebbert, and G. L. Heismeyer. 1984. Use of seeded native grasses as nesting cover by ducks. *Wildlife Society Bulletin* 12(2):134-138.
15. Klett, A. T., T. L. Shaffer, and D. H. Johnson. 1988. Duck nest success in the prairie pothole region. *Journal of Wildlife Management* 52(3):431-440.
16. Krapu, G. L., D. R. Parsons, and M. W. Weller. 1970. Waterfowl in relation to land use and water levels on the Spring Run area. *Iowa State Journal of Science* 44(4):437-452.
17. Kruse, A. D. and B. S. Bowen. 1996. Effects of grazing and burning on densities and habitats of breeding ducks in North Dakota. *Journal of Wildlife Management* 60(2):233-246.
18. Lokemoen, J. T., H. F. Duebbert, and D. E. Sharp. 1990. Homing and reproductive habits of Mallards, Gadwalls, and Blue-winged Teal. *Wildlife Monographs* 106:1-28.
19. Luttschwager, K. A., K. F. Higgins, and J. A. Jenks. 1994. Effects of emergency haying on duck nesting in Conservation Reserve Program fields, South Dakota. *Wildlife Society Bulletin* 22:403-408.
20. Mack, G. D. and L. D. Flake. 1980. Habitat relationships of waterfowl broods on South Dakota stock ponds. *Journal of Wildlife Management* 44(3):695-700.
21. Miller, K. J. 1976. Activity patterns, vocalizations, and site selection in nesting Blue-winged Teal. *Wildfowl* 27:33-43.
22. Mulhern, J. H., T. D. Nudds, and B. R. Neal. 1985. Wetland selection by Mallards and Blue-winged Teal. *Wilson Bulletin* 97(4):473-485.
23. Oetting, R. B. and J. F. Cassel. 1971. Waterfowl nesting on interstate highway right-of-way in North Dakota. *Journal of Wildlife Management* 35:774-781.
24. Rhodes, M. J. 1978. Habitat preferences of breeding waterfowl on the Texas high plains. Thesis, Texas Tech University, Lubbock, Texas, USA.
25. Rothe, T. C. 1977. Activities and use of space by Blue-winged Teal in relation to breeding habitat. Thesis, Iowa State University, Ames, Iowa, USA.
26. Ruwaldt, J. J., Jr., L. D. Flake, and J. M. Gates. 1979. Waterfowl pair use of natural and man-made wetlands in South Dakota. *Journal of Wildlife Management* 43(2):375-383.
27. Sousa, P. J. 1985. Habitat suitability index models: Blue-winged teal (breeding). Biological Report 82(10.114). U. S. Department of the Interior, Fish and Wildlife Service, Washington, D.C., USA.
28. Stewart, R. E. and H. A. Kantrud. 1974. Breeding waterfowl populations in the Prairie Pothole Region of North Dakota. *Condor* 76:70-79.
29. Swanson, G. A. 1974. Feeding ecology of breeding Blue-winged Teals. *Journal of Wildlife Management* 38(3):396-407.
30. Swanson, G. A. and M. I. Meyer. 1977. Impact of fluctuating water levels on feeding ecology of breeding Blue-winged Teal. *Journal of Wildlife Management* 41(3):426-433.
31. Willms, M. A. and R. D. Crawford. 1989. Use of earthen islands by nesting ducks in North Dakota. *Journal of Wildlife Management* 53(2):411-417.

# Blue-winged Teal




## Kansas Breeding Bird Atlas

 Confirmed Breeding

 Probable Breeding

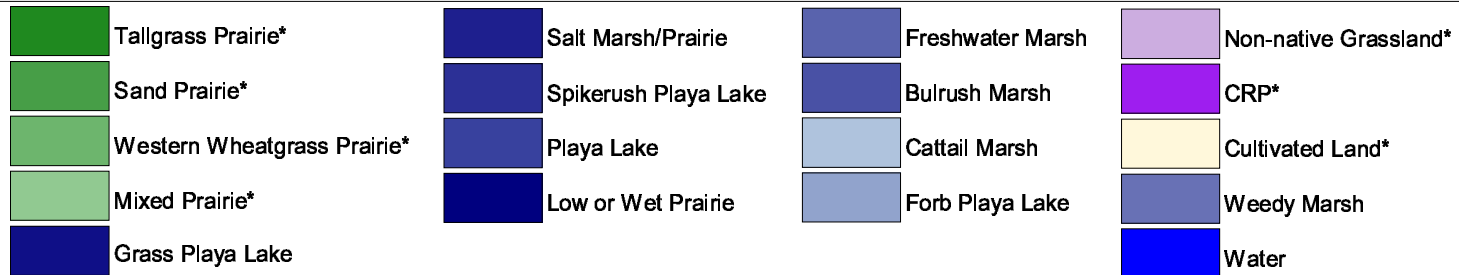
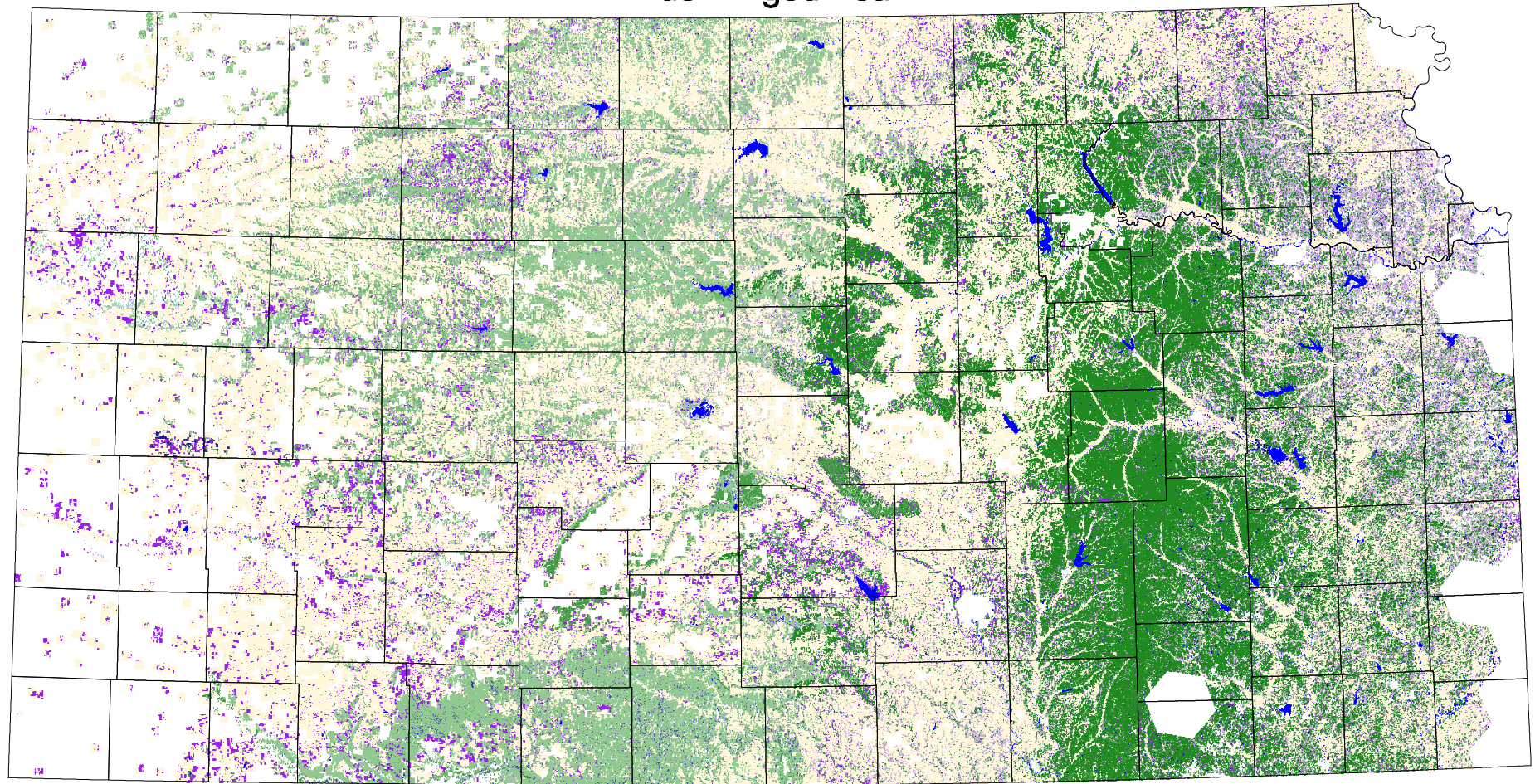
 Possible Breeding

 Breeding Bird Survey

 Birds of Kansas,  
Horned Lark

 Range from Johnsgard, 1888  
*The Birds of Nebraska*

# Blue-winged Teal



\* if within 1620 m of other mapped habitats