

# Habitat Model for Species: Barred Tiger Salamander

*Ambystoma tigrinum mavortium*

[Distribution Map](#)  
[Habitat Map](#)

## Landcover Category

### **0 - Comments**

Clarke, 1956  
Clarke et al., 1958

Collins, 1981  
Taggart, 1997

Brophy, 1980

[#KS GAP]  
[#Reviewer]

### **Habitat Restrictions**

Map 30 m edge of water

### **08 - Bur Oak Floodplain Woodland**

[#Reviewer]

### **09 - Mixed Oak Ravine Woodland**

[#Reviewer]

### **10 - Post Oak-Blackjack Oak Woodland**

[#Reviewer]

### **11 - Cottonwood Floodplain Woodland**

[#Reviewer]

### **12 - Sandsage Shrubland**

Royal, 1982

### **14 - Willow Shrubland**

Taggart, 1997

### **17 - Tallgrass Prairie**

Bragg, 1949

### **18 - Sand Prairie**

Bragg, 1949

Royal, 1982

### **19 - Sandstone Prairie - not mapped**

Bragg, 1949

### **20 - Western Wheatgrass Prairie**

Bragg, 1949

### **22 - Mixed Prairie**

Bragg, 1949

### **Comments**

Osage Co., KS. Single larva found in description of Study Lyon Co., Kansas Adults common in basements and moist places; breed in farm ponds.

Study in AZ. Collected only in artificial lentic habitats Study in Wallace, Logan, Wichita, Greeley and Hamilton Co.'s, KS.

Study on Ft. Leavenworth Military Reservation, KS. Species listed as *Ambystoma tigrinum mavortium*, but given location may actually be *A. t. tigrinum*. Found in old water holes and especially damp basements.

Platt: Found in any habitat that has non-flowing water and sufficient burrows or loose soil. Therefore, I would expect to find it in open woodland. As with most amphibians and reptiles, plant species composition is not very important.

See Platt review.

See Platt review.

See Platt review.

See Platt review.

Study in Finny Co., KS. Selected based on *Bouteloua gracilis*, *Sporebolus*, or *Calamovilfa* in Dominant Vegetation and "sand" in soil, and occurrence of habitat selected in study area. Species found in ephemeral pools

Alliance selected on basis of species in OTHER vegetation when in appropriate soil type and habitat

Study in OK. Based on "prairie" in Habitat section and occurrence in species range.

Study in OK. Based on "prairie" in Habitat section and occurrence in species range.

Study in Finny Co., KS. Selected based on *Bouteloua gracilis*, *Sporebolus*, or *Calamovilfa* in Dominant Vegetation and "sand" in soil, and occurrence of habitat selected in study area. Species found in ephemeral pools

Study in OK. Based on "prairie" in Habitat section and occurrence in species range.

Study in OK. Based on "prairie" in Habitat section and occurrence in species range.

Study in OK. Based on "prairie" in Habitat section and occurrence in species range.

**24 - Alkali Sacaton Prairie**

Bragg, 1949

Study in OK. Based on "prairie" in Habitat section and occurrence in species range.

**25 - Shortgrass Prairie**

Bragg, 1949

Study in OK. Based on "prairie" in Habitat section and occurrence in species range.

**29 - Playa Lake**

Taggart, 1997

Alliance selected on basis of species in OTHER vegetation when in appropriate soil type and habitat

**36 - Cottonwood Savanna - not mapped**

[#Reviewer]

See Platt review.

**40 - Non-native Grassland**

Busby and Parmelee, 1996 within river-bottom

**55 - Deciduous Woodland**

[#Reviewer]

See Platt review.

**60 - Mixed Prairie-Disturbed Land**

Bragg, 1949

Study in OK. Based on "prairie" in Habitat section and occurrence in species range.

**82 - Water (Lake)**

Tihen, 1937

Royal, 1982

Hamilton Co., KS. Larvae found in small pond. Finney Co., Kansas. 2 adults found in temporary pool in level sands. 200 larvae were found in 2 ephemeral pools on an unpaved road in the level sands. See other habitats selected for this reference for descriptions of level sands.

[#KS GAP]

Map 30 m edge.

**90 - Riverine Sand Flats and Bars - not mapped**

Royal, 1982

Study in Finny Co., KS. Selected based on *Bouteloua gracilis*, *Sporebolus*, or *Calamovilfa* in Dominant Vegetation and "sand" in soil, and occurrence of habitat selected in study area. Species found in ephemeral pools

**91 - Ozark Sandstone Glade / Prairie - not mapped**

Bragg, 1949

Study in OK. Based on "prairie" in Habitat section and occurrence in species range.

**92 - Ozark Limestone Glade - not mapped**

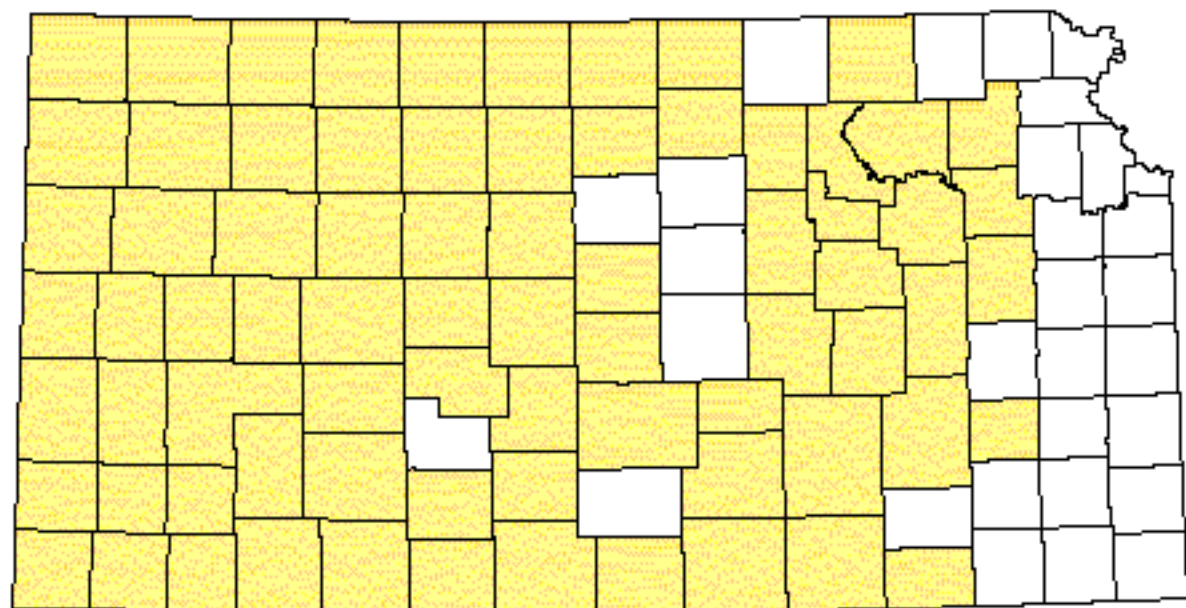
Bragg, 1949


Study in OK. Based on "prairie" in Habitat section and occurrence in species range.

Reference List

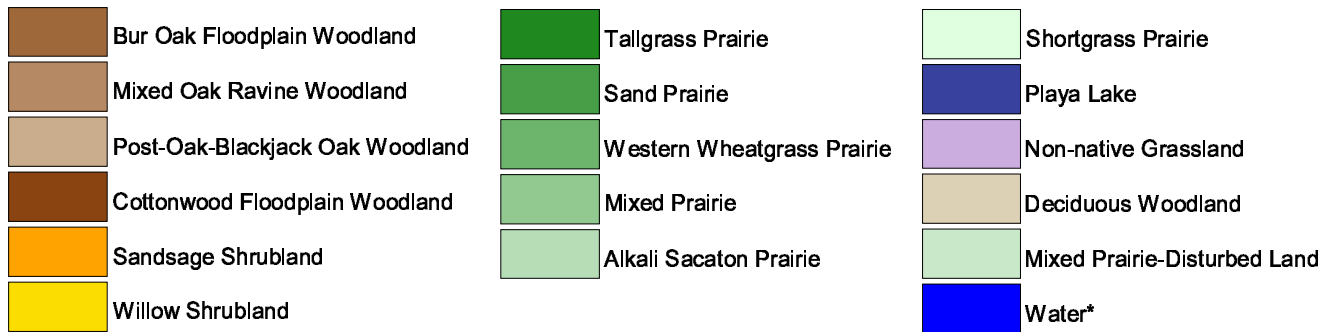
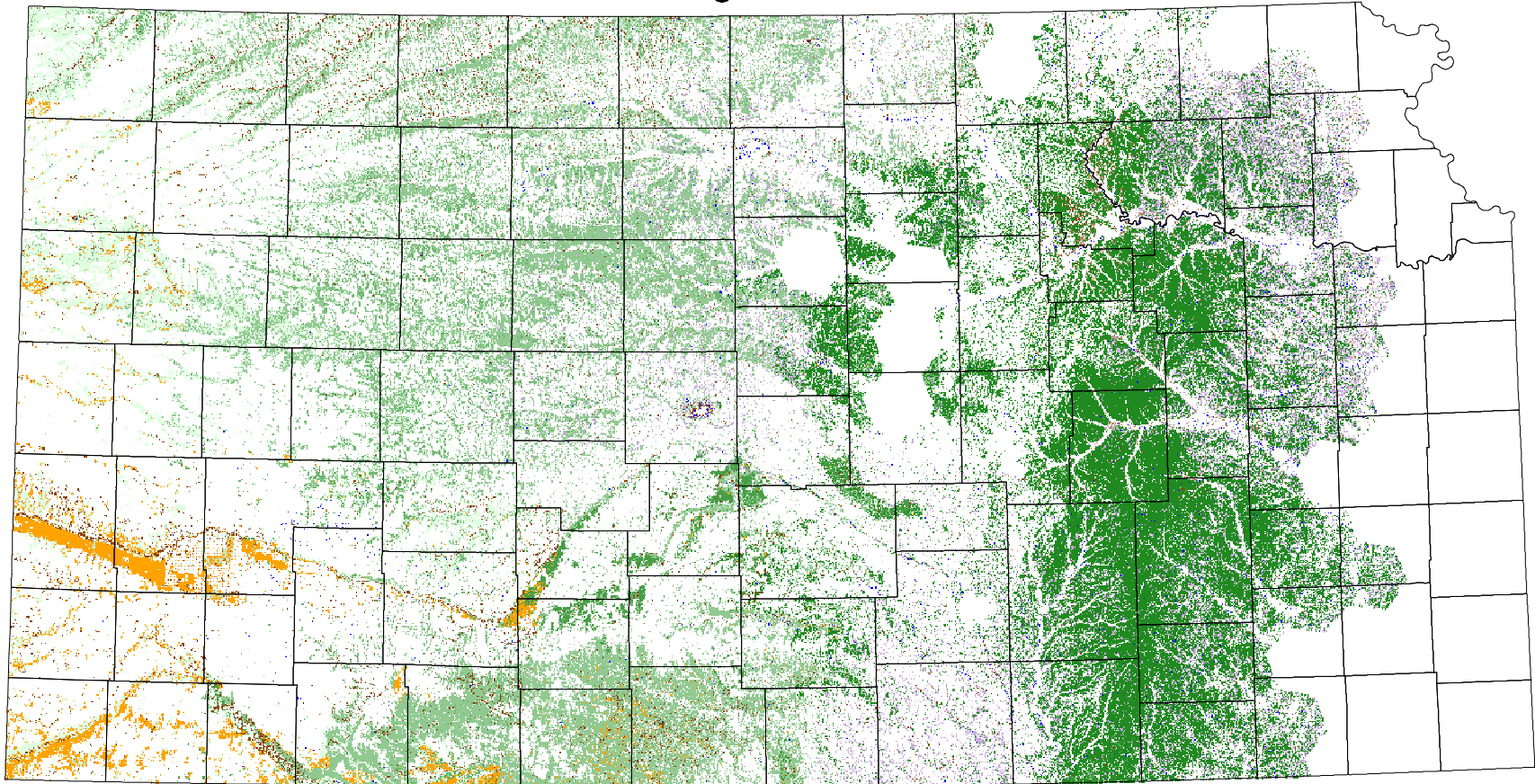
1. Bragg, A. N. 1949. Observations on the narrow-mouthed salamander. *Proceedings of the Oklahoma Academy of Science* 29:21-24.
2. Brophy, T. E. 1980. Food habits of sympatric larval *Ambystoma tigrinum* and *Notophthalmus viridescens*. *Journal of Herpetology* 14(1):1-6.
3. Busby, W. H. and J. R. Parmelee. 1996. Historical changes in a herpetofaunal assemblage in the Flint Hills of Kansas. *American Midland Naturalist* 135(1):81-91.
4. Clarke, R. F. 1956. Distributional notes on some amphibians and reptiles of Kansas. *Transactions of the Kansas Academy of Science* 59(2):213-219.
5. Clarke, R. F., J. Breukelman, and T. F. Andrews. 1958. An annotated check list of the vertebrates of Lyon County, Kansas. *Transactions of the Kansas Academy of Science* 61(2):165-195.
6. Collins, J. P. 1981. Distribution, habitats, and life history variation in the tiger salamander, *Ambystoma tigrinum*, in east-central and southeast Arizona. *Copeia* 1981(3):666-675.
7. Royal, S. M. 1982. Herpetofauna of a sandsage prairie near Holcomb, Kansas. Thesis, Fort Hays State University, Hays, Kansas, USA.
8. Taggart, T. W. 1997. Status of *Bufo debilis* (Anura: Bufonidae) in Kansas. *Kansas Herpetological Society Newsletter* (109):7-12.
9. Tihen, J. A. 1937. Additional distributional records of amphibians and reptiles in Kansas counties. *Transactions of the Kansas Academy of Science* 40:401-409.

# Barred Tiger Salamander



 Range from Collins, 1993

# Barred Tiger Salamander



\* 30 m edge