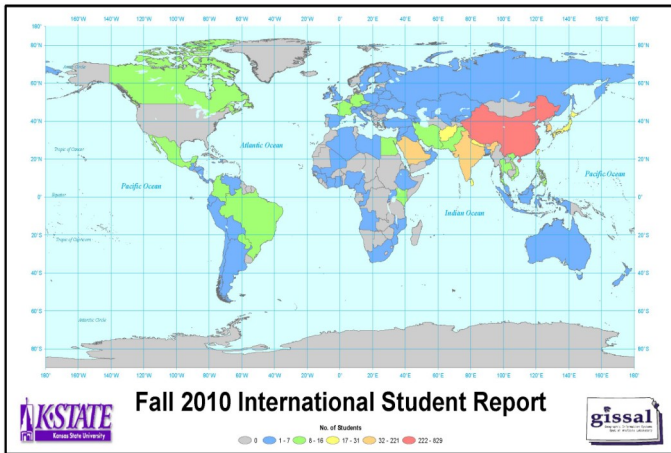


ISSS Connections

International Student and Scholar Services
October 2010



International Student Statistics for Fall 2010

K-State sees a continued increase in the number of international students on campus!

The number of international students enrolled at Kansas State University has increased once again! Reports show enrollment for international students from Fall 2009 as 1717. That number has increased to 1812 for Fall 2010! To view the reports of international students and scholars at Kansas State, please visit our website section "Statistics" at www.ksu.edu/iss. This full report breaks down K-State international student numbers into countries, majors and academic level. The Geography department used this data to produce maps for a fun visual aid! We thank them for their contributions. This information is also used to report requested data from the Institute of International Education each January.

In this Newsletter:

ISSS Statistics.....	1
Speakers Bureau.....	2
Travel Signatures.....	2
Book Club.....	2
ISSS Trips.....	3
USCIS Fees.....	3
Upcoming Events.....	4
Trivia Challenge.....	4

International Speakers Bureau

Just what is the International Speakers Bureau???

The purpose of the Speakers Bureau program is to benefit and educate the local community on issues related to international culture and experiences abroad. This is accomplished through student presentations given to local community organizations, area schools, classrooms on campus, or through programs given at the International Student Center. These presentations may include lectures, multi-media programs, demonstrations and/or performances that are given by students enrolled at Kansas State.

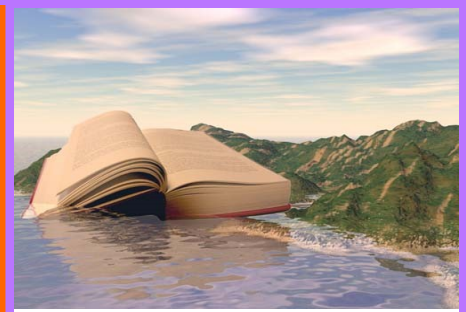
Who can participate ??

The program is open to *ANYONE* with an international experience they would like to share with the K-State and Manhattan community

- International students and/or their spouses;
- Returning Peace Corps volunteers;
- Returning international community service volunteers;
- Former study abroad students;
- others.....???

Wow! How do I get involved with such a great program???

Fill out a Speaker's Bureau application and submit it to Karl Anderson at International Student and Scholar Services. Applications can be obtained at International Student and Scholar Services or can be printed from our web site at <http://www.k-state.edu/iss/programsevents/speakersbureau.html>.



One World One Book

Reading Program

This semester, ISSS is starting a new program: One World One Book. In this program, everyone will read the same book throughout the semester. Then, small groups will meet at various times to discuss it. The book this semester is "Funny in Farsi."

The purpose of the program is to give international students, scholars and their spouses the opportunity to improve their English skills (reading, listening and speaking) in a relaxed setting. In addition, it is always interesting to hear discussion on a book from very diverse perspectives.

We had our information meeting on September 29th. We had a lively group activity and then broke into smaller groups. We are looking forward to interesting and fun meetings.

If you would like more information about joining the program, contact Maria Beebe at pappy@ksu.edu.

Travel Signatures

If you are planning a trip outside the U.S. during one of the upcoming breaks (Fall Break or Winter Break), be sure all of your immigration documents are in order before you leave Manhattan.

IMPORTANT: Travel outside the U.S. requires a travel signature on your I-20 or DS-2019 from ISSS. Please plan ahead and bring your I-20 or DS-2019 to our office several days before you leave.

Also, if you are traveling outside the U.S., check to be sure your U.S. visa will be valid on the date of your return. If it will not be valid, you must make an appointment at a U.S. Embassy or Consulate abroad and get another visa so you can reenter the U.S. to resume your studies.

You can get information on the wait times for appointments at the consulate at

http://www.travel.state.gov/visa/temp/wait/tempvisitors_wait.php

For those of you that had to go through the Special Registration process at the port of entry, be sure that you exit through one of the designated airports. It is VERY IMPORTANT that you check out upon exiting the U.S. For more information on Special Registration, go to <http://www.ice.gov/pi/specialregistration/>

Travel inside the U.S. does not require a travel signature on your I-20 or DS-2019 from ISSS. However, you should carry your documents with you, even if it is just a short trip. Have your passport and I-20/DS-2019 with you wherever you go.

If you have any questions, please visit our website at <http://www.k-state.edu/iss/current/travel.html> or stop by ISSS.



ISSS on the Road!

In September, international students, scholars and friends took two local trips. The first was to the Konza Prairie Biological Station for their biennial Visitors Day activities. The Konza Prairie Biological Station is an 8,600-acre native tallgrass prairie preserve located about ten miles south of Manhattan, making it an easy place to visit!

Unfortunately on the day we visited, a great Kansas thunderstorm swept through the area, and we all had to take shelter in a barn. It rained hard for nearly an hour! Some of the group members chose to go back to K-State. But the sun came out, and those who stayed went on a beautiful 2.5 mile guided hike where we learned about the prairie, its history and the research that is being done to maintain this important natural area.

The next weekend we traveled to the nearby military base, Fort Riley. There we ate our lunch at one of the dining facilities on base before heading to the historic district of the fort. We toured the Custer House and a couple of museums that featured U.S. military uniforms and history.

After visiting the museums, we went on a driving tour of the base. Our guide showed us many things around Fort Riley including many of the soldiers' houses, the hospital, the old training fields, barracks, monuments and machinery.

Our next trip is this Saturday, October 23rd to Kansas City. If you are interested in going on this trip, you must sign up at the International Student Center by OCT. 19th. The cost of the KC trip is \$20.



Change in USCIS Processing Fees

New fees for USCIS applications and petitions for benefits will be effective as of November 23, 2010. Any application materials mailed, filed or postmarked on or after November 23, 2010 must be accompanied by the new fee. Of interest to students, the filing fee for form I-765 (Application for Employment Authorization) will be increased from \$340 to \$380. One application will be lowered, the I-539 (Application to Extend/Change Nonimmigrant Status) fee will be decreased from \$300 to \$290.

Upcoming Events

Coffee Hour: Ghana
October 15 from 4-5pm
International Student Center

Sexual Health @ K-State
October 21 at 6:30pm
International Student Center

Trip to Kansas City
October 23 10am- 11pm.
Sign up by October 19!

**Sensible Nutrition and
Body Image in U.S.
Culture**
October 28 at 6:30pm
International Student Center

Coffee Hour: Nicaragua
October 29 from 4-5pm
International Student Center

J-1 Scholar Orientation
November 2 at 10am
International Student Center

**J-1 Student Academic
Training Workshop**
November 5 at 3:30pm
International Student Center

Kansas Weather
November 11 at 6:30pm
East PARC room at Jardine

Coffee Hour: Mali
November 12 from 4-5pm
International Student Center

INTERNATIONAL TRIVIA CHALLENGE 2010

ARE YOU SMART ENOUGH....?

International Student and Scholar Services is planning an International Trivia Challenge team event in November as part of International Education Week 2010.

Teams of 4-6 international and domestic students and scholars will be competing against each other in a team competition by answering trivia questions taken from many different categories, including history, geography, political science, and more! The more diverse your team is, the better chance you have of winning!

Participants may choose their own teams or sign-up individually and be assigned to a team by ISSS. Minimum team size is 4 and maximum team size is 6. Teams and individuals can start signing up NOW and the deadline for registration is

October 22nd, 2010. Once all teams are formed, trivia challenge details, including competition brackets and rules will be sent.

WHAT: International Trivia Challenge Team Event

WHEN: Games will take place the evenings of November 10, 11, and 12, with the championship game held in the K-State Student Union on the evening of November 18th.

Sign Up by visiting:

<http://tinyurl.com/2ez9lht>