

**Supplemental Information
Course and Curriculum items
FS Academic Affairs Committee Review
December 1, 2015 Meeting**

College of Engineering (11-12-15)

Selective Admissions proposal – Pages 1-3

Course changes – Pages 4-8

College of Arts and Sciences (11-12-15)

Pages 9-27

College of Engineering (11-12-15)

College of Engineering

10/20/15

Selective Admissions Proposal

ADD

[Note: At the current time, the College of Engineering does not have admission guidelines that are different from the university. For general admissions to K-State, for Fall 2015 the KBOR requires an ACT composite of at least 21; OR SAT of at least 980; or graduate in the top 1/3 of the HS class; AND have a 2.00 HS GPA on the Qualified Admission or Kansas Scholars curriculum.]

Require new students to (1) have an ACT score; and (2) require a composite ACT of 21 or higher, plus a HS gpa of 3.00 or higher to enter into the College of Engineering General Engineering program or CNSM. Students who have a composite ACT of 24 or higher plus a HS gpa of 3.00 or higher may be admitted to Computer Science (CS) or any of the other engineering degree programs (ARE, BSE, CHE, CE, CMPEN, EE, IE, ME). Students not admitted to the College of Engineering can enter the university Open Option program or another available college/degree program. They can still enter the College of Engineering as an internal transfer student. Internal transfer students will be required to have passed MATH 220 (or equivalent) (MATH 205 for CNSM) with a "C" or better and have a K-State cumulative gpa of at least 2.50 on 12 or more KSU hours. International students admitted to K-State as a new student without an ACT score will have the same admission requirements as an internal transfer student. External transfer students will be required to have passed MATH 220 (or equivalent) (MATH 205 for CNSM) with a "C" or better and have a transfer gpa of at least 2.75 on 12 or more transfer hours.

RATIONALE

The College of Engineering has been receiving students who are not academically prepared to enter the first year of the curriculum which includes MATH 220 and CHEM 210. Many of these students leave the college, fail one or more of their first semester courses, go on academic warning and/or create financial debt.

- 50% to 75% of the students with an ACT of 19 or lower leave the college
- 40% to 47% of the students with an ACT of 20-23 leave the college
- 76% of the students with a MATH ACT of 21 or lower earn a "D" or "F" in MATH 220. They need a "C" to move forward. Note: This does not include the number who dropped the course.

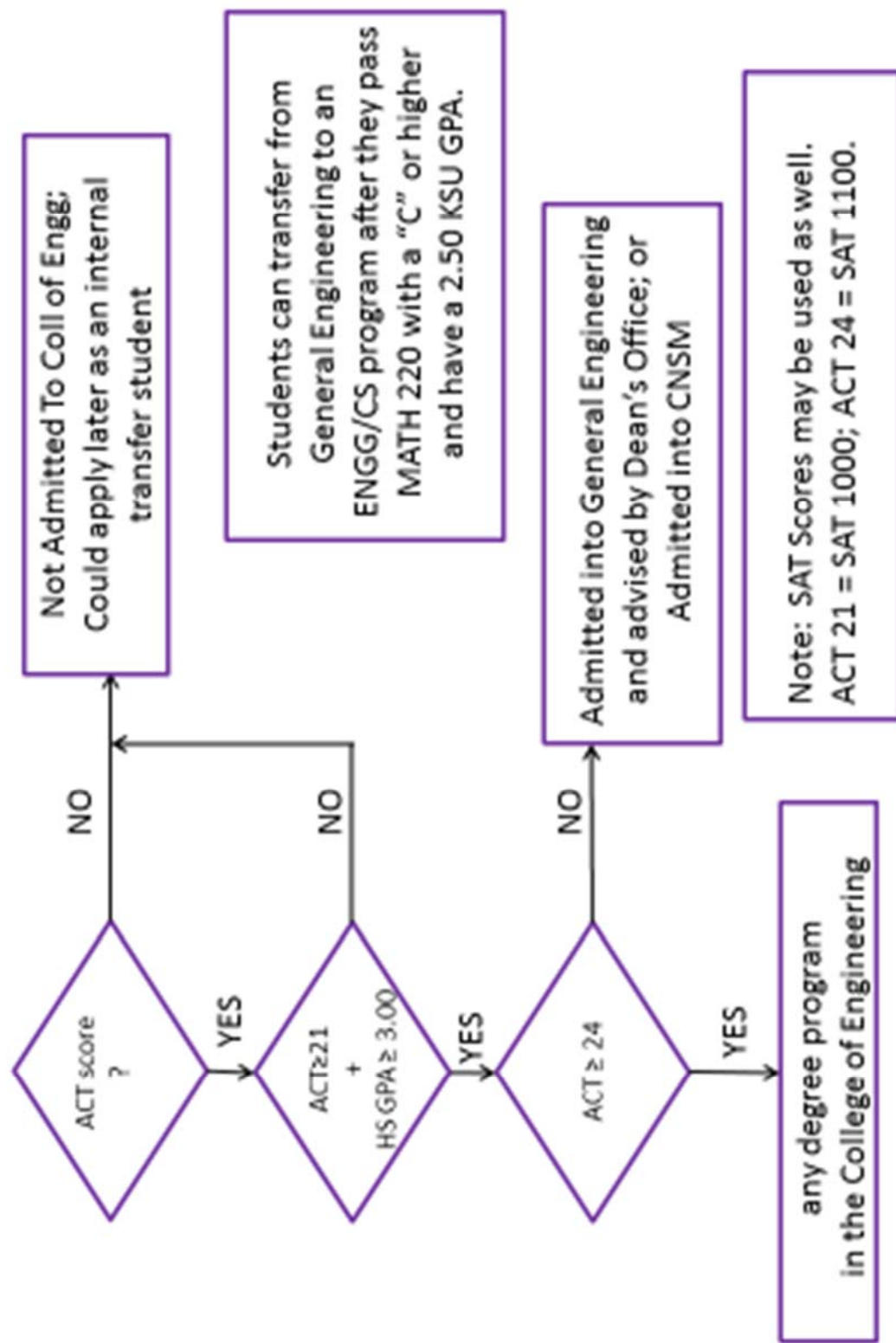
IMPACT

Fewer students will be admitted to the College of Engineering who are not prepared for the curriculum. These students could be placed in Open Option or another college.

EFFECTIVE DATE

Fall 2017

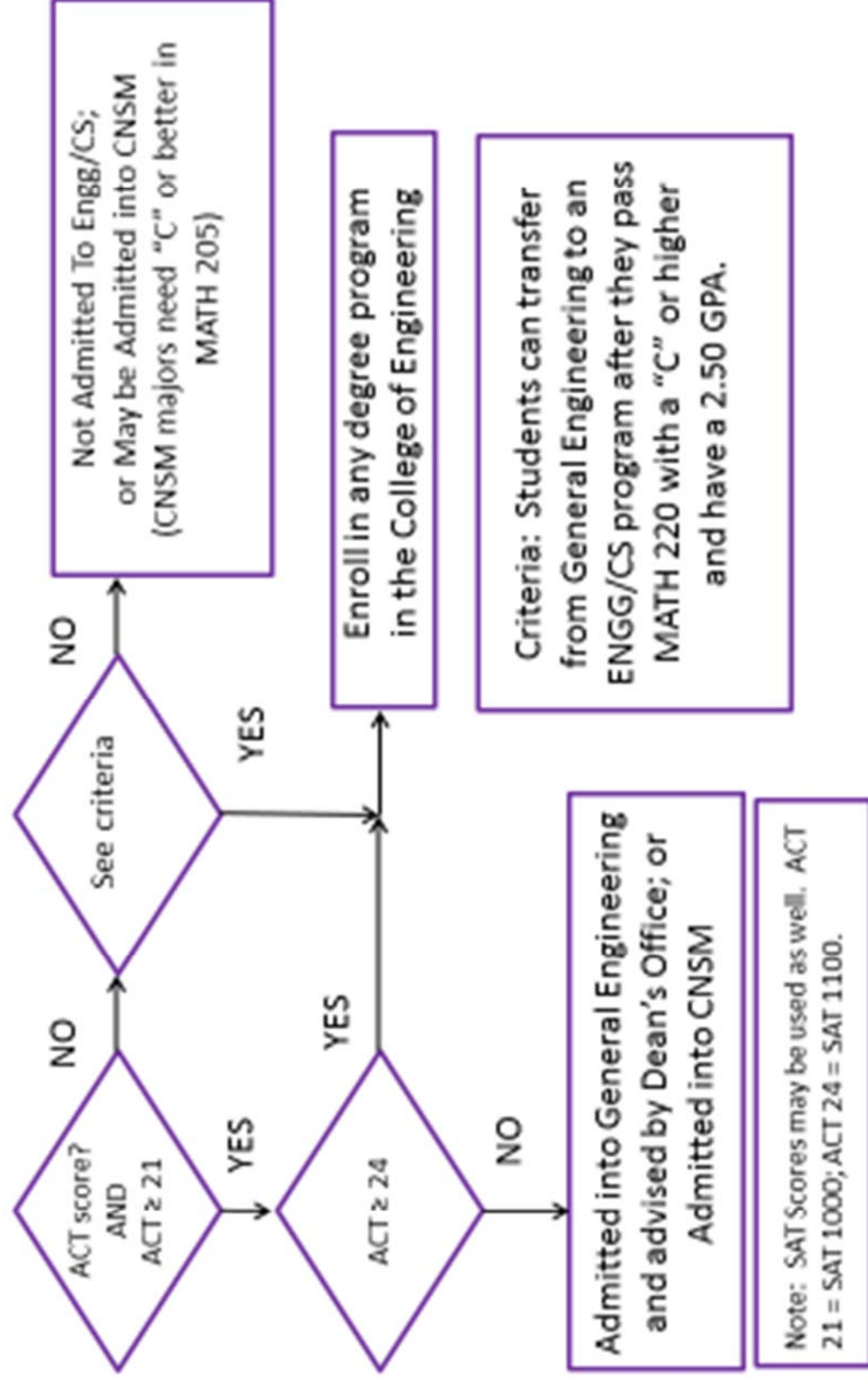
New Students –102115



Transfer Students (internal and external)

Must have been admitted by K-State

And K-State GPA ≥ 2.50 (internal) and ≥ 2.75 (external) 102115



Biological & Agricultural Engineering

From:

BAE 131 - ~~Introductory Design for Biological and Agricultural Engineers~~

Credits: (1)

~~Gain skills in biological and agricultural engineering topics through experiential design labs, application-oriented problem solving, computer use, teamwork, and written and oral communication.~~

Note: Three hours lab a week

Requisites: ~~None~~

When Offered: ~~Fall~~

UGE course: No **K-State 8:** None

To:

BAE 131 – Biological Systems Engineering Project I

Credits: (1)

Team-oriented design project, with an emphasis on applying computer tools to problem solving in biological systems engineering.

Note: Three hours lab a week

Requisites: Prerequisite or concurrent: MATH 220

When Offered: Spring

UGE course: No **K-State 8:** None

Rationale: The course title and description are being changed to reflect the activities. It is also being moved from the Fall semester to the Spring semester to allow students to complete BAE 101 (Introduction to Biological and Agricultural Engineering and Technology) prior to participation in the first engineering design class. BAE 231 and 331 – the other two courses in the design series – are also being updated.

Impact: Math Department, and they have been notified.

Effective: Spring 2016

Computing and Information Sciences

Add: CIS 090 - CIS Scholars Seminar (0). Presentation of professional problems and practices by students, faculty, and professionals associated with computing science.

Requisites

Prerequisite: Admission into the CIS Scholars Program.

When Offered

Fall, Spring

Rationale: We need a time when we can meet with the students in our Scholars Program on a regular basis.

Requiring them to enroll in this course will block out a time in all of their schedules for this purpose. We can use it to introduce them to research areas, allow them to meet with company representatives, etc.

Effective: Fall 2016

Impact: None

Mechanical and Nuclear Engineering

From:

NE 250 - Reactor Operations Laboratory

Credits: (3)

A basic course in reactor operator licensing, nuclear safety, and reactor operations with structured laboratory exercises.

Note

Two hours lecture and one three-hour lab per week.

Requisites

Prerequisite: PHYS 213.

When Offered

Fall, Spring, Summer

UGE course

No

K-State 8

None

To:

NE 350 - Reactor Operations Laboratory

Credits: (3)

A basic course in reactor operator licensing, nuclear safety, and reactor operations with structured laboratory

exercises.

Note

Two hours lecture and one three-hour lab per week.

Requisites

Prerequisite: PHYS 213.

When Offered

Fall, Spring, Summer

UGE course

No

K-State 8

None

Effective Spring 2016

Rationale:

We are changing the course number (from NE250 to NE350) on our Reactor Operations Laboratory for the following reasons:

- 1) Over the past several years the students enrolled in this course have changed from mostly underclassmen to predominantly upperclassmen.
- 2) Most students take NE250 after taking NE495 (2nd semester sophomore), once they want to learn more about the Nuclear Option or join the option.
- 3) Over the past several years, the emphasis in the course has changed from specific reactor licensing content to more of the reactor physics content (this course has PHYS213 as a pre-requisite), putting it in the first semester sophomore location. There are other 300-level courses in this location (Statics, Basic Materials, Mechanical Properties)

Impact: None outside of ME department

Undergraduate Curriculum Changes

Computing and Information Sciences

Drop: BS in Information Systems.

http://catalog.k-state.edu/preview_program.php?catoid=13&poid=3441&returnto=1331

Rationale: The recent growth in our undergraduate majors has stretched our resources to the point that maintaining two Bachelor's Degree programs is untenable. Information Systems is currently the only unaccredited Bachelor's Degree program in the College of Engineering, and getting it accredited would require a significant additional investment in faculty resources (i.e., faculty with terminal degrees in Information Systems). Information Systems majors comprise 10-15% of this department's total undergraduate population. The students in this program tend to fall in two categories:

- Those seeking training in Information Technology as opposed to Computer Science. The Computer Systems Technology program in the College of Engineering Technology is designed for these students.
- Those seeking a computing-related degree program with less mathematics and sciences. These students also tend to struggle with programming and other advanced technical concepts. The Management Information Systems program in the College of Business seems more appropriate for these students.

Dropping this program would allow us to discontinue some classes. It would also give us more flexibility in the frequency that we offer other classes. Finally, it would allow us to do a better job with other classes by eliminating students with weak mathematical backgrounds.

Effective: Summer 2016. Students who have already been admitted to begin this program in this or subsequent semesters will be switched to the program of their choosing.

Impact: Many students who would ordinarily major in Information Systems would likely major in either Computer Systems Technology or Management Information Systems instead. We contacted Prof. Mark Jackson, Head of the Dept. of Engineering Technology, and Prof. Tim Bower, Program Coordinator for the BS in Computer Systems Technology, on Oct. 9, 2015. That same day, both responded in support of the proposed change. We also contacted Prof. Bill Turnley, Interim Head of the Dept. of Management, on Oct. 9, 2015. On Oct. 19, 2015, he responded by saying he would discuss it with the MIS faculty, and the next day, Prof. Michael Chilton responded that he had no concerns with the proposal.

NON-EXPEDITED COURSE PROPOSALS

Courses Numbered 000-599

Dean of Arts and Sciences

ADD: DAS 225 – Fundamentals of Global Food Systems Leadership. (3) I, II. An interdisciplinary approach to the fundamental roles people, policies, and cultures play in the global food system enterprise as it relates to sustainable food production, processing, distribution, and availability. Students will explore complexities within self, others, and community related to leadership in the context of a rapidly increasing global population. K-State 8: Global Issues and Perspectives.

K-STATE 8 RATIONALE: This course will explore the fundamentals of food systems from a global perspective including policy, international food trade, government and NGO roles. Students will explore current issues from both domestic and international settings and analyze the global connectedness of food systems.

RATIONALE: This course explores the fundamental of Global Food Systems Leadership from an interdisciplinary approach. It is the first of three core courses specifically for the secondary major. It sets the stage for students to choose their concentration courses.

IMPACT: This course does not impact another unit.

EFFECTIVE DATE: Fall 2016

ADD: DAS 325 – Uncertainty in Global Food Systems Leadership. (3) II. Explore technical and adaptive elements of grand challenges across disciplines. Students will create a community-engaged project proposal. Students will explore the impact of cultural identity, life experience, and world views on leadership relationships as it relates to privilege and inclusion in the context of global food systems. K-STATE 8: Human Diversity within the US. Pr.: LEAD 225, DAS 225, or GENAG 225.

K-STATE 8 RATIONALE: This course explores the impact of cultural identity, life experience, and world views on leadership relationships as it relates to privilege and inclusion in the context of global food systems. It will take into account human dimensions, cultural norms, and traditions.

RATIONALE: This course considers the human dimensions of Global Food Systems Leadership in addition to other complex systems. It is the second of three core classes in the secondary major. It lays the foundation for the students' community-engaged scholarship.

IMPACT: This course does not impact another unit.

EFFECTIVE DATE: Fall 2016

ADD: DAS 425 – Global Food Systems Leadership in Action. (3) I. In this capstone course, students will conduct a community-engaged global food systems leadership research/service project. Emphasis on data collection, analysis and dissemination to appropriate audiences. Additional emphases on ethical dimensions of leadership and individual exploration of careers and roles within global food systems. K-State 8: Empirical and Quantitative Reasoning; Ethical Reasoning and Responsibility. Pr.: LEAD 225, DAS 225, or GENAG 225 and LEAD 325, DAS 325, or GENAG 325.

K-STATE 8 RATIONALE: This course integrates engaged scholarship and explores the ethical dimensions of community-engaged leadership. This will include data collection, analysis and dissemination to appropriate audiences. Core readings will focus on the ethics of leadership.

RATIONALE: This course gets students actively working on community-engaged scholarship related to Global Food Systems Leadership. It is the last of three core courses for the secondary major.

IMPACT: None

EFFECTIVE DATE: Fall 2016

Modern Languages

ADD: FREN 512 – French/Francophone Cinema. (3) The course consists of readings, written assignments, viewing, and discussion of French or Francophone films. May be repeated for credit with a focus on a different topic. For French credit, must be taken in French. Pr.: FREN 301 or equivalent. K-State 8: Aesthetic Interpretation; Global Issues and Perspectives.

K-STATE 8 RATIONALE: Film is an esthetic endeavor, and the films shown will offer different international/global perspectives.

RATIONALE: Our course offerings on film have increased to the point that, instead of using the course number for 'special studies', we would like to have a dedicated course number.

IMPACT: None

EFFECTIVE DATE: Fall 2016

Philosophy

FROM: PHILO 585 – Ethics. (3) I, II. Examines key developments in moral philosophy. May focus on issues in metaethics, ethical theory, or history of ethics. Pr.: PHILO 330. K-State 8: ~~Empirical and Quantitative Reasoning.~~

TO: PHILO 585 – Ethics. (3) I, II. Examines key developments in moral philosophy. May focus on issues in metaethics, ethical theory, or history of ethics. Pr.: PHILO 330. K-State 8: Ethical Reasoning and Responsibility.

RATIONALE: PHILO 585 is currently listed as fulfilling the K-State 8 empirical and quantitative reasoning requirement. We believe that this is a result of a typographical error somewhere in the initial process of applying K-State 8 tags, as PHILO 585 is an advanced course in ethics, and should satisfy the K-State 8 ethical reasoning and responsibility requirement, but involves no specific attention to quantitative or empirical reasoning. This change rectifies the error.

IMPACT: None

EFFECTIVE DATE: Fall 2016

NON-EXPEDITED CURRICULUM PROPOSALS

Undergraduate

Modern Languages

Modern Languages B.A. (French)

FROM:

TO:

<p>Bachelor's degree requirements</p> <p>French: (30 credit hours)</p> <p><i>Required:</i></p> <ul style="list-style-type: none"> • Thirty credit hours of French courses at and above the 200-level. • A grade of "C" or better or a minimum 2.5 GPA is required in all French courses counted towards the major. • At least three 700-level literature courses Credits: (9) 	<p>Bachelor's degree requirements</p> <p>French: (33 credit hours)</p> <p><i>Required:</i></p> <ul style="list-style-type: none"> • <u>Thirty-three credit hours of French courses at and above the 200-level.</u> • <u>15 of which must be at the 500-level (including FREN 520 and FREN 521) and 9 hours at the 700-level.</u> • A grade of "C" or better or a minimum 2.5 GPA is required in all French courses counted towards the major. • <u>Study abroad accepted, retroactive credit accepted. Minimum of two 700-level courses must be completed on campus.</u>
---	--

15 credit hours of French courses in the 300-level and higher

- ~~FREN 301 – French IV Credits: (4)~~
- ~~FREN 315 – Elementary French Conversation Credits: (2)~~
- ~~FREN 513 – French Composition and Grammar Credits: (3)~~
- ~~FREN 514 – Contemporary France Credits: (3)~~
- ~~FREN 516 – Readings in French Credits: (3)~~
- ~~FREN 517 – Commercial French Credits: (3)~~
- ~~FREN 518 – Advanced French Conversation Credits: (3)~~
- ~~FREN 519 – Special Studies in French Credits: (1-18)~~
- ~~FREN 530 – Topics in French Literature and Culture Credits: (3)~~

Two literature courses at the 500-level

- ~~FREN 520 – Introduction to French Literature I Credits: (3)~~
- ~~FREN 521 – Introduction to French Literature II Credits: (3)~~

Three 700-level courses

- ~~FREN 709 – Medieval French Literature Credits: (3)~~
- ~~FREN 710 – Sixteenth-Century French Literature Credits: (3)~~
- ~~FREN 711 – Seventeenth-Century French Literature Credits: (3)~~
- ~~FREN 713 – Eighteenth-Century French Literature Credits: (3)~~
- ~~FREN 714 – Romantic French Literature Credits: (3)~~
- ~~FREN 715 – Realist French Literature Credits: (3)~~

Program of Study:

1. Intermediate Languages Courses (9 hours):
 - FREN 201 - French 3 Credits: (5)
 - FREN 301 - French 4 Credits: (4)
2. Literary, Cultural, Linguistic, and Professional Development Courses at the 500-level or above (9 hours- select three course of your choice)
 - FREN 501 – Readings in French Credits: (3)
 - FREN 503 – Composition and Grammar Credits: (3)
 - FREN 509 - Phonetics Credits: (1)
 - FREN 512 – French and Francophone Cinema Credits: (3)
 - FREN 514 – Contemporary France Credits: (3)
 - FREN 515 – History of French Culture Credits: (3)
 - FREN 517 – Business French Credits: (3)
 - FREN 518 – French Conversation Credits: (3)
 - FREN 519 – Special Studies in French Credits: (1-18)
 - FREN 530 – Topics in French/Francophone Literature and Culture Credits: (3)
3. Required Literary Studies (6 hours):
 - FREN 520 – Introduction to French Literature (19th Century to the Present) Credits: (3)
 - FREN 521 – Introduction to French Literature (Medieval to 18th Century) Credits: (3)
4. Advanced Literary, Cultural, Professional Development and Linguistic Studies (9 hours – select three courses):
 - FREN 709 – Medieval French Literature Credits: (3)
 - FREN 710 – Sixteenth-Century French Literature Credits: (3)
 - FREN 711 – Seventeenth-Century French Literature Credits: (3)
 - FREN 714 – Eighteenth-Century French Literature Credits: (3)
 - FREN 714 – Romantic French Literature Credits: (3)

<ul style="list-style-type: none"> • FREN 716 – Contemporary French Literature Credits: (3) • FREN 719 – Advanced Spoken and Written French Credits: (3) • FREN 720 – Seminar in French Literature and Culture Credits: (3) • FREN 721 – Francophone Literature and Culture Credits: (3) • FREN 742 – Literature for Second Language Acquisition Credits: (3) • FREN 743 – Culture for Second Language Acquisition Credits: (3) • FREN 799 – Problems in Modern Languages Credits: (1-18) <p>Major Option “with distinction”</p> <p>The department also offers a major option “with distinction”.</p> <ul style="list-style-type: none"> • Students seeking this option must: maintain a 3.5 GPA in all courses taken toward the major while they fulfill the requirements. • 6 credit hours, in addition to the regular major: Two additional courses, one of which must be on the 700 level. 	<ul style="list-style-type: none"> • <u>FREN 715 – Realist French Literature Credits: (3)</u> • <u>FREN 716 – Contemporary French Literature Credits: (3)</u> • <u>FREN 719 – Advanced Spoken and Written French Credits: (3)</u> • <u>FREN 720 – French Literature and Culture Credits: (3)</u> • <u>FREN 721 – Francophone Literature and Culture Credits: (3)</u> • <u>FREN 742 – French and Francophone Literature for Second Language Acquisition Credits: (3)</u> • <u>FREN 743 – French and Francophone Culture for Second Language Acquisition Credits: (3)</u> • <u>FREN 799 – Problems in French Credits: (1-18)</u> <p>Major Option “with distinction”</p> <p>The department also offers a major option “with distinction”.</p> <ul style="list-style-type: none"> • Students seeking this option must: maintain a 3.5 GPA in all courses taken toward the major while they fulfill the requirements. • 6 credit hours, in addition to the regular major: Two additional courses, one of which must be on the 700 level.
---	--

RATIONALE: In the original description of the major at 30 credit hours, we had 15 credit hours at the 300-level and higher and did not include FREN 201 (French 3--a five credit course) in the major as it was written with the original 30 hours although they could receive credit for courses at the 200-level. In an attempt to render the major more transparent, we have rewritten the program of study to clarify that students will receive credit for FREN 201 and FREN 301 (9 hours total rather than the previously listed 4 hours of FREN 301 alone) and have reduced the requirements at the 500-level to 9 hours rather than 11 (once one removed the 4 credits of 301 and the 2 credits of elementary conversation that is no longer being offered in favor of offering more regularly the 3-credit conversation course). Students were already using FREN 201 to count towards their credits given that the major read "Thirty credit hours of French courses at and above the 200 level" however that was not reflected in the description of the program of study. Students before this change would actually take 33 hours (9 hours at the intermediate level, 9 hours at the 500-level or higher, 6 hours of literature, and 9 hours of 700-level courses, for a total of 33). We are merely formalizing what students were already doing in the interest of transparency for majors.

IMPACT: None

EFFECTIVE DATE: Fall 2016

French Minor

FROM:

TO:

Program requirements

In order to ~~minor in a language~~, you need to comply with the following rules:

- First, declare your minor. You can do so when you start taking classes toward the minor, or later on.
- To declare your minor, you need to fill out a "Add Minor" form in the Department of Modern Languages, 104 Eisenhower Hall.
- ~~You do not need to have an advisor to do your minor, simply follow the requirements relative the language you've chosen.~~
- You must receive a "C" or better, or a minimum GPA of 2.5, in all courses counted toward a minor.
- We strongly encourage students to [Study Abroad](#). While university policy requires courses applied towards the minor to be taken in residence, we will accept appropriate coursework taken toward the minor; provided that ~~at least two 400/500 level courses~~ for the minor be taken on campus.
- [Retroactive Credit](#) from KSU does apply toward the minor.
- Classes for the minor cannot be taken Pass/Fail.

Minor requirements

~~French courses in the 200 level and above, including one literature course.~~

- ~~FREN 201 - French III Credits: (5)~~

Program requirements

In order to [minor in French](#), you need to comply with the following rules:

- First, declare your minor. You can do so when you start taking classes toward the minor, or later on.
- To declare your minor, you need to fill out a "Add Minor" form in the Department of Modern Languages, 104 Eisenhower Hall or online.
- 21 hours at the 200-level or above, 12 hours of which must be at the 500-level or above and must include FREN 520 or FREN 521.
- You must receive a "C" or better, or a minimum GPA of 2.5, in all courses counted toward a minor.
- We strongly encourage students to [Study Abroad](#). While university policy requires courses applied towards the minor to be taken in residence, we will accept appropriate coursework taken toward the minor; provided that at least two 500 level courses for the minor be taken on campus.
- [Retroactive Credit](#) from KSU does apply toward the minor.
- Classes for the minor cannot be taken Pass/Fail.

Minor requirements

Program of Study:

1. Intermediate Language Courses (9 Hours):

<ul style="list-style-type: none"> • FREN 301 – French IV Credits: (4) • FREN 315 – Elementary French Conversation Credits: (2) • FREN 398 – Intermediate Studies in French Credits: (1-6) • FREN 502 – French Literature in Translation Credits: (3) • FREN 509 – French Phonetics Credits: (1) • FREN 510 – Modern French Culture Credits: (2) • FREN 513 – French Composition and Grammar Credits: (3) • FREN 514 – Contemporary France Credits: (3) • FREN 515 – French and Francophone Culture Credits: (3) • FREN 516 – Readings in French Credits: (3) • FREN 517 – Commercial French Credits: (3) • FREN 518 – Advanced French Conversation Credits: (3) • FREN 519 – Special Studies in French Credits: (1-18) • FREN 530 – Topics in French Literature and Culture Credits: (3) • FREN 709 – Medieval French Literature Credits: (3) • FREN 710 – Sixteenth-Century French Literature Credits: (3) • FREN 711 – Seventeenth-Century French Literature Credits: (3) • FREN 713 – Eighteenth-Century French Literature Credits: (3) • FREN 714 – Romantic French Literature Credits: (3) • FREN 715 – Realist French Literature Credits: (3) • FREN 716 – Contemporary French Literature Credits: (3) • FREN 719 – Advanced Spoken and Written French Credits: (3) 	<ul style="list-style-type: none"> • <u>FREN 201 – French III Credits: (5)</u> • <u>FREN 301 – French IV Credits: (4)</u> <p>2. <u>Literary, Cultural, Linguistic, and Professional Development Courses at the 500-level (9 hours – select three courses of your choice):</u></p> <ul style="list-style-type: none"> • <u>FREN 501 – French Readings Credits: (3)</u> • <u>FREN 503 – French Composition and Grammar Credits: (3)</u> • <u>FREN 509 – French Phonetics Credits: (1)</u> • <u>FREN 512 – French and Francophone Cinema Credits: (3)</u> • <u>FREN 514 – Contemporary France Credits: (3)</u> • <u>FREN 515 – History of French Culture Credits: (3)</u> • <u>FREN 517 – Business French Credits: (3)</u> • <u>FREN 518 – French Conversation Credits: (3)</u> • <u>FREN 530 – Topics in French/Francophone Literature and Culture Credits: (3)</u> • <u>Any course at the 700-level</u> <p>3. <u>Required Literary Studies (3 hours – select one course)</u></p> <ul style="list-style-type: none"> • <u>FREN 520 – Introduction to French Literature (19th Century to the present) Credits: (3)</u> • <u>FREN 521 – Introduction to French Literature (Medieval to 18th Century) Credits: (3)</u> <p>Total credit hours: (21)</p>
--	--

<ul style="list-style-type: none"> ● FREN 720 – Seminar in French Literature and Culture Credits: (3) ● FREN 721 – Francophone Literature and Culture Credits: (3) ● FREN 742 – Literature for Second Language Acquisition Credits: (3) ● FREN 799 – Problems in Modern Languages Credits: (1-18) <p>Select one of the following courses to fulfill the literature requirement:</p> <ul style="list-style-type: none"> ● FREN 520 – Introduction to French Literature I Credits: (3) ● or ● FREN 521 – Introduction to French Literature II Credits: (3) <p>Total credit hours: (20)</p>	
--	--

RATIONALE: The change in hours reflects what students are currently doing in their programs of study in French. This change will not actually require students to take an extra course. Rather, it reflects credit students are obtaining already through retroactive credit or through their course selection.

IMPACT: None

EFFECTIVE DATE: Fall 2016

Spanish Translation Minor

ADD:

<p>Spanish Translation Minor</p> <p>Minor Program Requirements (18 Credit Hours)</p> <p>Professional writing in English elective (3 credit hours)</p> <p>Students complete one of the following courses:</p> <ul style="list-style-type: none"> ● ENGL 302 – Technical Writing credits: (3) ● ENGL 400 – Advanced Expository Writing for Prospective Teachers Credits: (3) ● ENGL 415 – Written Communication for Engineers Credits: (3) ● ENGL 417 – Written Communication for the Workplace Credits: (3) ● ENGL 510 – Introduction to Professional Writing Credits: (3) ● ENGL 516 – Written Communication for the Sciences Credits: (3)
--

- MC 200 – News and Feature Writing Credits: (3)
- MC 221 – Advertising Strategy and Writing Credits: (3)
- MC 426 – Magazine and Feature Writing Credits: (3)

Approaches to language elective (3 credit hours)

Students must complete one of the following courses:

- COMM 480 – Intercultural Communication Credits: (3)
- ANTH 514 – Language and Culture Credits: (3)
- ANTH 792 – Linguistic Methods Credits: (3)
- SPAN 600 – Introduction to Linguistics Credits: (3)
- SPAN 670 – Advanced Spanish Grammar Credits: (3)
- SPAN 776 – History of the Spanish Language Credits: (3)
- ENGL 430 – The Structure of English Credits: (3)
- ENGL 435 – Linguistics for Teachers of English Credits: (3)
- ENGL 490 - Development of the English Language Credits: (3)

Professional Spanish (3 credit hours)

Students must complete one of the following courses:

- SPAN 530 – Professional Spanish: Business Credits: (3)
- SPAN 531 – Professional Spanish: Health and Human Services Credits: (3)

Core Courses (9 credit hours)

Students complete all of the following courses:

- SPAN 575 – Introduction to Spanish Translation Credits: (3)
- SPAN 771 - Advanced Spanish Translation Credits: (3)
- SPAN 774 – Topics in Spanish Translation or Interpreting Credits: (3)

RATIONALE: In their professional and civic lives, bilingual people are often called upon to translate written texts or serve as interpreters in oral communication. Those without formal training in translation or interpreting can do more harm than good when they attempt to convey meaning across languages and cultures. The state of Kansas lacks resources for students looking to develop basic translation skills or prepare for advanced study leading to career in the translation/interpreting field (in addition to the Wichita State program listed in Appendix 2, Johnson County Community College offers programs in medical and legal interpreting). As the number of Kansas residents with limited English proficiency increases, the need for qualified translators and interpreters is rising. Professionally trained translators and interpreters are in high demand nationwide; according to the National Bureau of Labor Statistics, employment for translators and interpreters is projected to increase 46 percent from 2012 to 2022, much faster than the average projected growth for all occupations.

By adding a Spanish translation minor, K-State would become the first university in Kansas to provide a basic foundation in translation studies. Students completing the minor would be well informed about circumstances under which they could ethically provide translation or interpreting services, and about what additional training they would need in order to become professional translators or interpreters. Addressing this urgent need in the state is consistent with the land-grant mission of the university, and expanding language program offerings supports the internationalization component of the K-State 2025 plan.

The Modern Languages Department already has the resources to offer this minor. Spanish faculty with translation expertise include three associate professors, one assistant professor, and an instructor; one Spanish faculty member is currently certified by the

American Translators Association, and the Spanish section will seek funding for additional faculty members to attain this nationally respected credential. The department will also seek funding to offer a healthcare interpreting workshop for faculty.

Student interest in the two existing Spanish translation courses have been high, with consistently strong enrollments (500-level courses are currently capped at 15, and 700-level courses are capped at 10):

	Fall 15	Fall 14	Fall 13	Fall 12	Fall 10
SPAN 575	18	18	16	16	14
	Spring 15	Spring 13	Fall 11	Spring 10	
SPAN 771	8	14	15	15	

Proposed Student Learning Objectives for the Spanish Translation Minor:

- Students will demonstrate culturally and linguistically effective basic Spanish-English translation skills in a variety of subject areas
- Students will demonstrate effective professional writing skills in English and Spanish
- Students will demonstrate knowledge of the translation profession, codes of ethics, and resources available for future professional development.

IMPACT: English, Journalism and Mass Communications, Communication Studies, Sociology, Anthropology, and Social Work have all given their approval for the courses to be added to the minor.

EFFECTIVE DATE: Fall 2016

Philosophy

Philosophy B.A./B.S.

FROM:

TO:

The program in philosophy gives students an understanding of traditional philosophical subjects such as the nature and justification of moral values, religious and scientific explanations of the world, the rationality of social institutions, and the nature of reasoning and argument.

There are six degree options for the BA and BS degree:

- Standard Philosophy Option
- Philosophy/Pre-law Options
- Philosophy/Pre-business Option
- Philosophy/Pre-ministry Option
- Philosophy/Interdisciplinary Option

The program in philosophy gives students an understanding of traditional philosophical subjects such as the nature and justification of moral values, religious and scientific explanations of the world, the rationality of social institutions, and the nature of reasoning and argument.

There are six degree options for the BA and BS degree:

- Standard Philosophy Option
- Philosophy/Pre-law Options
- Philosophy/Pre-business Option
- Philosophy/Pre-ministry Option
- Philosophy/Interdisciplinary Option

<ul style="list-style-type: none"> Philosophy/Pre-med Option <p>Bachelor's degree (BA or BS) requirements</p> <p>Philosophy Major Core curriculum (24 credit hours)</p> <p>All philosophy majors must take the following <u>eight</u> courses:</p> <ul style="list-style-type: none"> PHILO 301 - History of Philosophy Credits: (3) PHILO 303 - Writing Philosophy Credits: (3) PHILO 305 - Reasons, Decisions and Society Credits: (3) PHILO 320 - Symbolic Logic I Credits: (3) PHILO 330 - Moral Philosophy Credits: (3) PHILO 335 - Introduction to Social and Political Philosophy Credits: (3) PHILO 340 - Justification and Reliable Knowledge Credits: (3) PHILO 345 - Worlds, Things and Properties Credits: (3) <p>Standard philosophy option</p> <p>This option is for students who are interested in a traditional liberal arts course of study.</p> <p>Philosophy course requirements (36 credit hours)</p> <ul style="list-style-type: none"> Core curriculum Credits: (24) *Philosophy Electives Credits: (12) Three of the electives must be at the 500 level or above <p>Pre-law options</p> <p>While no one major is given preference by law school admission boards, law schools recognize the value of philosophy for refining skills in</p>	<ul style="list-style-type: none"> Philosophy/Pre-med Option <p>Bachelor's degree (BA or BS) requirements</p> <p>Philosophy Major Core curriculum (24 credit hours)</p> <p>All philosophy majors must take the following <u>nine</u> courses:</p> <ul style="list-style-type: none"> PHILO 301 - History of Philosophy Credits: (3) PHILO 303 - Writing Philosophy Credits: (3) PHILO 305 - Reasons, Decisions and Society Credits: (3) PHILO 320 - Symbolic Logic I Credits: (3) PHILO 330 - Moral Philosophy Credits: (3) PHILO 335 - Introduction to Social and Political Philosophy Credits: (3) PHILO 340 - Justification and Reliable Knowledge Credits: (3) PHILO 345 - Worlds, Things and Properties Credits: (3) <u>PHILO 681 – Philosophy Portfolio Credits: (0)</u> <p>Standard philosophy option</p> <p>This option is for students who are interested in a traditional liberal arts course of study.</p> <p>Philosophy course requirements (36 credit hours)</p> <ul style="list-style-type: none"> Core curriculum Credits: (24) *Philosophy Electives Credits: (12) Three of the electives must be at the 500 level or above <p>Pre-law options</p>
---	--

expression, comprehension, and critical thinking. According to the *Pre-Law Handbook*, “the free and spirited consideration of philosophical questions is almost the model for legal training.”

The department offers two degree options:

Single Major Option (36 credit hours)

- Core curriculum **Credits:** (24)
- PHILO 535 - Philosophy of Law **Credits:** (3)
- Related Area Component Credits: (3)
Choose from:
- PHILO 525 - Social-Political Philosophy **Credits:** (3)
- or
- PHILO 585 - Ethics **Credits:** (3)
- *Philosophy Electives **Credits:** (6) One of the electives must be at the 500 level or above

Interdisciplinary Option (30 credit hours)

- Core curriculum **Credits:** (24)
- PHILO 535 - Philosophy of Law **Credits:** (3)
- *Philosophy Electives **Credits:** (3)
- Completion of another major in the College of Arts and Sciences

Philosophy/pre-business option

The pre-business option is for students who plan to do graduate work leading to a master's in business administration. This program has been developed in accordance with the results of surveys in professional business journals that rate this type of program as an excellent preparation for careers in business leadership.

Single Major Option (36 credit hours)

- Core curriculum **Credits:** (24)

While no one major is given preference by law school admission boards, law schools recognize the value of philosophy for refining skills in expression, comprehension, and critical thinking. According to the *Pre-Law Handbook*, “the free and spirited consideration of philosophical questions is almost the model for legal training.”

The department offers two degree options:

Single Major Option (36 credit hours)

- Core curriculum **Credits:** (24)
- PHILO 535 - Philosophy of Law **Credits:** (3)
- Related Area Component Credits: (3)
Choose from:
- PHILO 525 - Social-Political Philosophy **Credits:** (3)
- or
- PHILO 585 - Ethics **Credits:** (3)
- *Philosophy Electives **Credits:** (6) One of the electives must be at the 500 level or above

Interdisciplinary Option (30 credit hours)

- Core curriculum **Credits:** (24)
- PHILO 535 - Philosophy of Law **Credits:** (3)
- *Philosophy Electives **Credits:** (3)
- Completion of another major in the College of Arts and Sciences

Philosophy/pre-business option

The pre-business option is for students who plan to do graduate work leading to a master's in business administration. This program has been developed in accordance with the results of surveys in professional business journals that rate this type of program as an excellent preparation for careers in business leadership.

- PHILO 380 - Philosophy and Race **Credits:** (3)
- **Choose from:**
- PHILO 525 - Social-Political Philosophy **Credits:** (3)
- PHILO 585 - Ethics **Credits:** (3)
- PHILO 650 - Rationality and Action **Credits:** (3)
- or
- PHILO 665 - Philosophy of Economics **Credits:** (3)
- *Philosophy Electives **Credits:** (6)

Double Major Option (30 credit hours)

This option is for students who wish to combine a philosophy/pre-business degree with an undergraduate degree in the College of Business Administration.

- Core curriculum **Credits:** (24)
- PHILO 380 - Philosophy and Race **Credits:** (3)
- *Philosophy Electives **Credits:** (3)

Philosophy/pre-ministry option

This is a nonsectarian program designed for students who are interested in the religious ministry as a profession. Students will be advised on other courses outside philosophy recommended by most American schools of theology.

Philosophy course requirements (33 credit hours)

- Core curriculum **Credits:** (24)
- Related Area Component **Credits:** (6)
Choose two:
- PHILO 510 - Symbolic Logic II **Credits:** (3)
- PHILO 615 - Philosophy of Religion **Credits:** (3)
- PHILO 635 - Metaphysics **Credits:** (3)

Single Major Option (36 credit hours)

- Core curriculum **Credits:** (24)
- PHILO 380 - Philosophy and Race **Credits:** (3)
- **Choose from:**
- PHILO 525 - Social-Political Philosophy **Credits:** (3)
- PHILO 585 - Ethics **Credits:** (3)
- PHILO 650 - Rationality and Action **Credits:** (3)
- or
- PHILO 665 - Philosophy of Economics **Credits:** (3)
- *Philosophy Electives **Credits:** (6)

Double Major Option (30 credit hours)

This option is for students who wish to combine a philosophy/pre-business degree with an undergraduate degree in the College of Business Administration.

- Core curriculum **Credits:** (24)
- PHILO 380 - Philosophy and Race **Credits:** (3)
- *Philosophy Electives **Credits:** (3)

Philosophy/pre-ministry option

This is a nonsectarian program designed for students who are interested in the religious ministry as a profession. Students will be advised on other courses outside philosophy recommended by most American schools of theology.

Philosophy course requirements (33 credit hours)

- Core curriculum **Credits:** (24)
- Related Area Component **Credits:** (6)
Choose two:
- PHILO 510 - Symbolic Logic II **Credits:** (3)

- **PHILO 640 - Epistemology Credits: (3)**
- or
- **PHILO 655 - Philosophy of Mind Credits: (3)**
- *Philosophy Electives **Credits: (3)**
- Additional Requirements **Credits: (6)** include:
- Two courses in which religion is studies, from departments other than philosophy. Departmental approval of these courses is required.

Philosophy/pre-med option

While no one major is given preference by medical schools and related post-graduate programs, their admission committees recognize philosophy as a valuable primary or secondary major. In fact, surveys indicate that nationally, philosophy graduates have some of the highest acceptance rates at medical schools. Students in this program will be advised to supplement their education with an important science component.

Philosophy course requirements (33 credit hours)

- Core curriculum **Credits: (24)**
- **PHILO 365 - Medical Ethics Credits: (3)**
- *Philosophy Electives **Credits: (9)** At least one of the electives must be at the 500 level or above

Note

Students choosing this option and planning to apply for medical school are strongly advised to combine it with at least a minor in one of the following disciplines: **biology**, **chemistry**, or **physics**.

Double Major Option (30 credit hours)

- **PHILO 615 - Philosophy of Religion Credits: (3)**
- **PHILO 635 - Metaphysics Credits: (3)**
- **PHILO 640 - Epistemology Credits: (3)**
- or
- **PHILO 655 - Philosophy of Mind Credits: (3)**
- *Philosophy Electives **Credits: (3)**
- Additional Requirements **Credits: (6)** include:
- Two courses in which religion is studies, from departments other than philosophy. Departmental approval of these courses is required.

Philosophy/pre-med option

While no one major is given preference by medical schools and related post-graduate programs, their admission committees recognize philosophy as a valuable primary or secondary major. In fact, surveys indicate that nationally, philosophy graduates have some of the highest acceptance rates at medical schools. Students in this program will be advised to supplement their education with an important science component.

Philosophy course requirements (33 credit hours)

- Core curriculum **Credits: (24)**
- **PHILO 365 - Medical Ethics Credits: (3)**
- *Philosophy Electives **Credits: (9)** At least one of the electives must be at the 500 level or above

Note

Students choosing this option and planning to apply for medical school are strongly advised to combine it with at least a minor in one of the following disciplines: **biology**, **chemistry**, or **physics**.

This option is for students who wish to combine a philosophy/pre-med option with another Arts and Sciences major.

- Core curriculum **Credits:** (24)
- **PHILO 365 - Medical Ethics Credits:** (3)
- *Philosophy Electives **Credits:** (3)
- Completion of another major in the College of Arts and Sciences

Interdisciplinary Option

This option is for students who wish to combine a major in philosophy with a major in another discipline. Each student completing a degree under this option must have a faculty advisor in the Department of Philosophy who supervises the student's program.

Philosophy course requirements (30 credit hours)

- Core curriculum **Credits:** (24)
- **PHILO 680 - Independent Study in Philosophy Credits:** (1-18)
- *Philosophy Electives **Credits:** (6) At least one of the electives must be either PHILO 680 or receive prior departmental approval.
- Completion of another major in the College of Arts and Sciences

*Electives

Unless otherwise restricted, electives may be chosen from any course with the PHILO designation.

Total credit hours required for graduation: (120)

Double Major Option (30 credit hours)

This option is for students who wish to combine a philosophy/pre-med option with another Arts and Sciences major.

- Core curriculum **Credits:** (24)
- **PHILO 365 - Medical Ethics Credits:** (3)
- *Philosophy Electives **Credits:** (3)
- Completion of another major in the College of Arts and Sciences

Interdisciplinary Option

This option is for students who wish to combine a major in philosophy with a major in another discipline. Each student completing a degree under this option must have a faculty advisor in the Department of Philosophy who supervises the student's program.

Philosophy course requirements (30 credit hours)

- Core curriculum **Credits:** (24)
- **PHILO 680 - Independent Study in Philosophy Credits:** (1-18)
- *Philosophy Electives **Credits:** (6) At least one of the electives must be either PHILO 680 or receive prior departmental approval.
- Completion of another major in the College of Arts and Sciences

*Electives

Unless otherwise restricted, electives may be chosen from any course with the PHILO designation.

Total credit hours required for graduation: (120)

RATIONALE: We are adding a capstone seminar course, Philo 681, as a mechanism to enforce compliance with assessment activities. This change requires students to take

PHILO 681 (for 0 credits) before graduation. PHILO 681 requires students to submit 3 papers of their choice, which papers are used for assessment purposes.

IMPACT: None

EFFECTIVE DATE: Fall 2016

Statistics

Statistics and Data Science B.A./B.S.

FROM:

TO:

<p>Statistics is a combination of classical mathematics, the theory of probability, and new concepts related to inductive reasoning that have developed during the past 75 years.</p> <p>Almost all activities of plants and animals (including people) depend to some degree on chance events, and most decisions made by people depend on sampling information— which also depends on chance events, and hence on probability. Consequently, fields of interest and activities for a statistician potentially are very broad.</p> <p>Likewise, the professional activities open to a trained statistician are varied. The existence of modern-day computers relieves the statistician of tedious computations and elevates his or her professional activity to dealing with people and/or engaging in basic research.</p> <p>Students who major in statistics may seek a bachelor of arts degree or a bachelor of science degree by satisfying the general requirements of that degree and by completing the following:</p> <p>Bachelor's degree requirements</p> <p>General requirements</p> <ul style="list-style-type: none"> • CIS 111 - Introduction to Computer Programming Credits: (3) 	<p>Statistics is a combination of classical mathematics, the theory of probability, and new concepts related to inductive reasoning that have developed during the past 75 years.</p> <p>Almost all activities of plants and animals (including people) depend to some degree on chance events, and most decisions made by people depend on sampling information— which also depends on chance events, and hence on probability. Consequently, fields of interest and activities for a statistician potentially are very broad.</p> <p>Likewise, the professional activities open to a trained statistician are varied. The existence of modern-day computers relieves the statistician of tedious computations and elevates his or her professional activity to dealing with people and/or engaging in basic research.</p> <p>Students who major in statistics may seek a bachelor of arts degree or a bachelor of science degree by satisfying the general requirements of that degree and by completing the following:</p> <p>Bachelor's degree requirements</p> <p>General requirements</p> <ul style="list-style-type: none"> • CIS 111 - Introduction to Computer Programming Credits: (3)
--	--

- or
- CIS 200 - Programming Fundamentals **Credits:** (4)
- ENGL 516 - Written Communication for the Sciences **Credits:** (3)
- MATH 220 - Analytic Geometry and Calculus I **Credits:** (4)
- MATH 221 - Analytic Geometry and Calculus II **Credits:** (4)
- MATH 222 - Analytic Geometry and Calculus III **Credits:** (4)
- STAT 341 - Biometrics II **Credits:** (3)
- or
- STAT 351 - Business and Economic Statistics II **Credits:** (3)
- ~~STAT courses at the 400 level or higher may replace either or both of the 300-level STAT courses.~~
- STAT 510 - Introductory Probability and Statistics I **Credits:** (3)
- STAT 511 - Introductory Probability and Statistics II **Credits:** (3)
- STAT 705 - Regression and Analysis of Variance **Credits:** (3)

One course selected from the following list:

- ~~CIS 209 - C Programming for Engineers **Credits:** (3)~~
- ~~CIS 300 - Data and Program Structures **Credits:** (3)~~
- ~~MATH 551 - Applied Matrix Theory **Credits:** (3)~~

One course selected from the following list:

- STAT 325 - Introduction to Statistics **Credits:** (3)
- STAT 340 - Biometrics I **Credits:** (3)
- STAT 350 - Business and Economic Statistics I **Credits:** (3)

- or
- CIS 200 - Programming Fundamentals **Credits:** (4)
- or
- CIS 209 – C Programming for Engineers **Credits:** (3)
- ENGL 516 - Written Communication for the Sciences **Credits:** (3)
- MATH 220 - Analytic Geometry and Calculus I **Credits:** (4)
- MATH 221 - Analytic Geometry and Calculus II **Credits:** (4)
- MATH 222 - Analytic Geometry and Calculus III **Credits:** (4)
- MATH 515 – Introduction to Linear Algebra **Credits:** (3)
- or
- MATH 551 – Applied Matrix Theory **Credits:** (3)
- STAT 341 - Biometrics II **Credits:** (3)
- or
- STAT 351 - Business and Economic Statistics II **Credits:** (3)
- STAT 510 - Introductory Probability and Statistics I **Credits:** (3)
- STAT 511 - Introductory Probability and Statistics II **Credits:** (3)
- STAT 705 - Regression and Analysis of Variance **Credits:** (3)
- or
- STAT 713 – Applied Linear Statistical Models **Credits:** (3)
- STAT 725 – Introduction to SAS Computing **Credits:** (1)
- STAT 726 – Introduction to S plus/R Computing **Credits:** (1)
- Additional STAT credits at 700 level **Credits:** (3) (excluding STAT 701 and STAT 703)

One course selected from the following list:

<p><i>One course selected from the following list:</i></p> <ul style="list-style-type: none"> • STAT 710 - Sample Survey Methods Credits: (3) • STAT 720 - Design of Experiments Credits: (3) • STAT 722 - Statistical Designs for Product Development and Process Improvement Credits: (3) • Additional STAT credits at 700 level Credits: (3) 	<ul style="list-style-type: none"> • STAT 325 - Introduction to Statistics Credits: (3) • STAT 340 - Biometrics I Credits: (3) • STAT 350 - Business and Economic Statistics I Credits: (3) <p><i>One course selected from the following list:</i></p> <ul style="list-style-type: none"> • STAT 710 - Sample Survey Methods Credits: (3) • STAT 720 - Design of Experiments Credits: (3) • STAT 722 - Statistical Designs for Product Development and Process Improvement Credits: (3)
<p>Notes</p> <p>Upper-division quantitative electives to give a total of 46 credit hours. Courses must be at the 400 level or above, and may include IMSE 541, math, computer science, statistics, or course in other area with substantial quantitative content. Note that STAT courses at the 400 level or higher may replace either or both of the 300-level STAT courses.</p> <p>A minimum of 2.0 GPA in STAT courses taken as part of the major is required for graduation.</p> <p>Total credit hours required for graduation: (120)</p>	<p>Notes</p> <p>Upper-division quantitative electives to give a total of <u>50</u> credit hours. Courses must be at the 400 level or above, and may include IMSE 541, <u>IMSE 785, ECON 630</u>, math, computer science, statistics (<u>excluding STAT 701 and STAT 703</u>), or course in other area with substantial quantitative content.</p> <p>Note that STAT courses at the 400 level or higher may replace either or both of the 300 level STAT courses, <u>but credit may be received for only one of STAT 701 or STAT 703. STAT 770 and STAT 771 may replace STAT 510 and STAT 511, respectively, subject to department approval</u></p> <p>A minimum <u>grade of C</u> in each course taken as part of the major is required for graduation.</p> <p>Total credit hours required for graduation: (120)</p>

RATIONALE: We propose (1) to modify the course requirements for the undergraduate major in statistics to modernize the program and (2) to change the name of the major to Statistics and Data Science to more accurately reflect the nature of the discipline. Statistics is fast-growing major throughout the country, and the proposed changes are intended to

capitalize on the popularity. In addition, the modification of the course requirements will help in the development of a concurrent BS/MS program in statistics.

IMPACT: Departments that will be minimally impacted are Mathematics, Computing and Information Systems, and Industrial and Manufacturing Systems Engineering. All three departments were contacted via email on 8 Sept, 2015 (see attached email), and all three departments supported the changes.

EFFECTIVE DATE: Fall 2016