

KSU Facilities Safety Bulletin

VOLUME 9, ISSUE 10

October 26, 2016

Congratulations to the OSHA 2016 Vendor Fair BINGO drawing winners: Anne Murphy (Pair of Safety Glasses), Tim Brunner (Gift Certificate), and the grand prize winner: Deanna Damme (Milwaukee Stand Light). Thanks to everyone that attended!

Don't forget to check out some of the new features to the Facilities Training and Safety Website: <http://www.k-state.edu/facilities/operations/training/>

Division of Facilities

“Test Your Knowledge” On the right hand side is a link where you can answer the question of the month. If correct and all required fields are filled out you will be eligible for a prize drawing at the end of the month starting in November.

“Take the Safety Pledge” On the right hand side is a link to the National Safety Council website where you can take a pledge to be safe at work. See example below.

“Safety Slogan Contest” On the right hand side is a entry form to put in a new safety slogan for Facilities. All entries must be received by December 14, 2016.

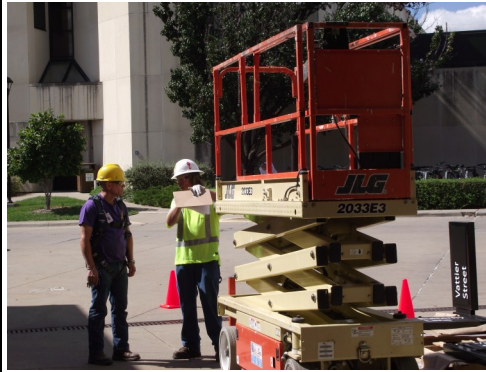
Once you have taken the pledge, print the certificate then bring it to Adam or Sandy for framing and a photo opportunity. For group photos, arrangements can be made through the training and safety office to come to your location for photos. All photos will be entered into the safety pledge photo gallery on the website and be publicly recognized in a future safety bulletin.

Training in Action



Josh Ricker

Larry Melton and Trainer Sam Linhardt



OSHA 2016 Refresher



OSHA 2016 Safety Town

Coming Soon!

New laboratory sign system (from the October 19, 2016 K-State Today)

By [Christina Aguilera](#)

University labs will be sporting a new look in the spring semester. Starting Jan. 17, 2017, all labs on campus will be [required to use standardized lab signs](#) to provide consistent information to emergency responders, students, faculty and staff about the nature of the hazards present in the lab. [View an example of the new signs online.](#)

Those responsible for labs will be able to print the signs using a fillable PDF form. Beyond populating the sign, the form also collects information about the types of risk present and the contact information for the lab. This information is then submitted to K-State Police and environmental health and safety. The lab sign format was developed in collaboration with safety representatives on campus and with the input of the Manhattan Fire Department.

The signs will allow those entering the lab to see at a glance the nature of the laboratory hazards, the required personal protective equipment, or PPE, any precautions needed and general hazards present. This system fulfills various related regulations and funding entity expectations.