



## PRESIDENT'S CORNER-CHUCK OTTE

### INSIDE THIS ISSUE:

President Elect Message	2
Alpha Rho webpage	2
ESP Award Nominations Encouraged	3
Membership Renewal Time Approaches	3
ESP Scholarships	3
Endowment Grant Thank You	4
International Relations Committee	4
Membership Committee	5
Stay informed!	5
ESP Endowment Grant Applications	6
100th Anniversary	6

### 2014 Upcoming events:

- **August 15**—Deadline for ESP Alpha Rho Chapter Scholarships—Connie Hoch and Jim Lindquist
- **August 15**—Deadline for Alpha Rho Chapter Endowment Fund Grants
- **October 6-9**—National ESP Conference—Indianapolis, Indiana



It never ceases to amaze me at how fast the years go by. As I write this the county fair season is just gearing up and by the time you read it, it will be winding down! Annual Conference is just around the corner, whether it seems like it should or not, and then there's the year end reports and we transition into another programming year and the cycle continues.

Before we get to Annual Conference, many of us will be attending ESP National Conference in Indianapolis. We'll have some Kansans receiving some well-deserved national recognition (check the ESP National website <http://espnational.org/> for more details on that). We'll be just a few weeks back from that when we have our annual meeting at Annual Conference and I'll give you more of a report. Although I have attended many ag agents association conferences (NACAA), I've also been fortunate to attend a couple of ESP National Conferences and have found them to be excellent! The presentations really are all about being an Extension Professional as well as being a subject matter professional.

We are past the early bird registration for the Indianapolis conference, but because time does seem to fly by so fast, I want you to start thinking about 2015 or even 2016 ESP national Conference. The 2015 conference will be October 4 - 7 and will be at the Coeur d'Alene Resort in Coeur

d'Alene, Idaho. I have been to Coeur d'Alene and it is beautiful there. It'll be a great conference in a great location! I don't have the dates or location for the 2016 meeting, but it will probably be in that first full week of October.

Professional Improvement is an important part of being an Extension Professional and one that I don't think we do a very good job planning for. We need to be constantly looking for opportunities to stretch ourselves and become better professionals. Attending an ESP National Conference is a great way to accomplish that! Plus the Kansas delegation always has a lot of fun!

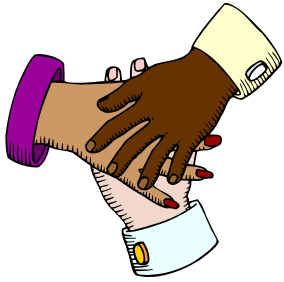
One other thing that we can all do a better job of is nominating our coworkers and peers for the numerous ESP awards that we have available. Sometimes we end up nominating ourselves for awards, but what really brings satisfaction is when a coworker nominates you for an award. I've been fortunate to have received an Alpha Rho Chapter award and what made it so special was that it was my coworker that nominated me for it. We all too often wait until two days (or one) before the deadline and then throw an award together. After all, the last minute does seem to be the Extension way.

Why not start now working on an award application for next year. Take time when we have

our awards ceremony at Annual Conference to think of great things that coworkers in your office or other offices have done and then start working on that nomination as soon as you get home. Start the application process and then let it set and get cold. Then whenever you think of something else, a week or month or two months later, you can go and add it to the application. By the time that the deadline for 2015 rolls around you'll have an awesome application prepared! Life is about accomplishments and accomplishments should be celebrated!

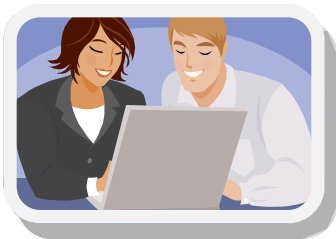
Before you know it I'll be handing the gavel to Stacey Warner. It's been a wonderful year and a great experience. I may not have gotten everything accomplished that I wanted to, and Stacey probably won't nor the presidents after her. But we have a great Alpha Rho Chapter Council and I encourage each and every one of you to step forward and get involved. I'm a collector of sayings. Some obscure, some original and some from famous people that I'm ashamed I've never encountered before. As I close let me share one I stumbled across this past year by Robert Louis Stevenson: "Don't judge each day by the harvest you reap, but by the seeds you plant." Have a good remainder of the summer and plant lots of seeds!

**Chuck Otte, President**  
Alpha Rho Chapter,  
Epsilon Sigma Phi



## Benefits of ESP membership:

- Opportunities in professional and personal development, leadership, and Networking.
- The interdisciplinary nature of the Organization.
- ESP is the one organization that includes all Extension professionals.



## PRESIDENT-ELECT MESSAGE: STACEY WARNER

As President-elect of the Alpha Rho Chapter of Epsilon Sigma Phi, I have given some thought the past several months to the question of why would someone continue to pay dues to belong to an organization, in this case Epsilon Sigma Phi.

In the next several months you will have the opportunity to re-new your Epsilon Sigma Phi dues. Those dues are \$70 for annual members and \$20 for associate members (associate members are those in their first three years of extension employment). Rather than thinking of your dues as an expense, I would like to encourage you to think of your dues as an investment in your professional future. As with any investment, you would hope for a measurable return.

As I reviewed the benefits of belonging to Epsilon Sigma Phi here are some of the returns I thought of that can be quantified:

**Extension Endowment Fund Grants** – Since 1992 the Alpha Rho Chapter has given \$71,205 in grants to Kansas extension professionals for improving educational programming and professional development. Those grants

have ranged from \$150 to \$2635. That is a sizeable return on investment ranging from 214% to 3764%!

**Scholarships** – Currently there are two scholarship funds for attendance at national professional meetings. These funds are the Jim Lindquist Administrative Leadership Scholarship and the Connie Hoch Leadership Scholarship. Eleven individuals have received this recognition since 2009. At an average of \$400 per scholarship that is a return on the dues investment of 571%. Other returns are more difficult to put a monetary value on, but are important none the less.

**Recognition** – Currently the Alpha Rho Chapter website lists the names of 580 individuals who have been nominated by their peers and received recognition since 1977 for their extension programming. While many people will say they don't need recognition, I think we would all agree that it is really rewarding to nominate someone else for an award.

**Leadership** – Serving as an officer or committee member of an organization that is system wide provides an opportunity to enhance leadership skills. Leadership at the local chapter can lead to a leadership role at the national organization. Several Alpha Rho Chapter members have served in national officer and committee roles.

**Association with KSRE Peers** – Epsilon Sigma Phi is a professional association that reaches across all disciplines and office locations of the extension system. Within the last year I heard a colleague say “I would have never gotten acquainted with (name) if it hadn't been for Epsilon Sigma Phi. Our paths would have most likely have never crossed. Now I have a new professional colleague.” When it's time to pay your ESP dues I encourage you to consider it an investment in your professional future, not an expense.

**Stacey Warner**  
President-Elect

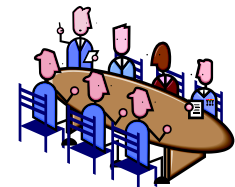
## CHECKOUT OUR ESP WEBSITE.....

If you haven't been online to check out our ESP Alpha Rho Chapter website, you will want to go to the link provided and see what opportunities are available for you as a member!

[www.ksre.ksu.edu/esp-alpha\\_rho](http://www.ksre.ksu.edu/esp-alpha_rho)

If you are serving on an ESP committee and are unsure of your committee tasks,

simply go to the “committee” link in the left hand pane.



## ESP AWARD NOMINATIONS ENCOURAGED

Consider sending in a recognition nomination for one of your co-workers, friends or yourself for one or more of the following award categories:

- Early Career
- Distinguished Service
- Mid-Career
- Friend of Extension
- Visionary Leadership
- Administrative Leadership

- Distinguished Team
- International Service
- Horizon:
  - County/ District (2)
  - Area (1)
  - State (1)
- Diversity/ Multicultural:
  - Individual
  - Team
- Retiree Service
- Meritorious Service
  - County/District (2)
  - Area (1)
  - State (1)

For more information on any of the categories, simply go to our ESP website for the description. The nomination form is on the ESP Alpha Rho website and will need to be sent to me electronically by **August 15**. My email address is [scarson@ksu.edu](mailto:scarson@ksu.edu).

**Sheryl Carson**,  
Recognition committee Chair



**NOW IS THE  
TIME TO  
THINK ABOUT  
WHO YOU  
MIGHT NOMI-  
NATE FOR  
2014!**

**“ESP is the only  
professional  
organization where  
you associate with  
all Extension  
professionals,  
including retirees.”**

*Kansas ESP Member*



## MEMBERSHIP RENEWAL TIME APPROACHES

Make plans in your September-October budget to renew your Epsilon Sigma Phi dues. Dues for the 2014-15 year will be \$70 for annual members (more than 3 years of Extension tenure) and \$20 for associate members (3 years or less Extension tenure). Renewals may be sent to

Treasurer Jennifer Wilson % Riley County Extension Office, 110 Courthouse Plaza, Rm. B220. Manhattan, KS 66502, or they may be paid at the annual meeting on October 21. A drawing for one free membership will occur

during the annual meeting. Members must pay prior to or during the annual meeting to be eligible for the drawing.

Thanks,  
**Jennifer Wilson**,  
Treasurer

## PROFESSIONAL DEVELOPMENT SCHOLARSHIPS AVAILABLE FROM ESP!!

A benefit of Alpha Rho Chapter membership is the opportunity to apply for professional development scholarships.

Details for submitting a scholarship application for the **Jim Lindquist Administrative Leadership**

**Scholarship** for Professional Development and/or the **Connie Hoch Leadership Scholarship** is available on the website at:  
[www.ksre.ksu.edu/esp-alpharho/p.aspx?tabid=12](http://www.ksre.ksu.edu/esp-alpharho/p.aspx?tabid=12)

The Scholarship application deadline has been extended to **August 15**.

If you have additional questions contact **M. Gayle Price**, Endowment Grant Fund Chair, at (620) 431-4530 or email at [gprice@ksu.edu](mailto:gprice@ksu.edu).

2013 ESP Endowment  
Grant Recipient:  
**Rhonda Gordon**  
FCS Agent  
Lyon County



*Epsilon Sigma Phi (ESP) is dedicated to fostering standards of excellence in the Extension system and developing the Extension profession and professional.*



## 2013 ESP ENDOWMENT GRANT RECIPIENT THANK YOU!

.Wow! Who knew when I applied for an **ESP Professional Development Grant** to attend **Galaxy IV** that it would be the last chance to attend this meeting. I want to thank the Endowment Fund for the opportunity to attend this one of a kind experience.

The city of “brotherly love” Pittsburgh, Pennsylvania..... what a setting for a national meeting of all branches of our Extension family. Galaxy started with a “meet and greet” at an area similar to Aggieville, lots of restaurants, shopping and refreshment establishments. Many of the Kansas delegation ended up on the same boat to travel to the location for the evening.

I was able to attend breakout sessions on **family finance, local government, nutrition and parenting**. There were endless options of classes to choose from. The local

government breakout session was one of the best sessions I attended in working with all levels of government. Highlights included:

- Making sure we are telling our story to our stakeholders.
- Building collaboration in our own communities and making the most out of our opportunities.

I had the pleasure of attending the presentation of the Ruby Award to our own Daryl Buchholz. Daryl’s speech was impassioned and inspirational. Sometimes we all need to be reminded why we chose the career path we did and joined the Extension family.

States night out with the Family and Consumer Science agents was an amazing adventure to the historic and restored Union Station train station. We had a wonderful evening of food, fun and fellowship and got

a chance to hear what everyone was learning in their breakout sessions. We were joined for the evening by the new dean of the college of Human Ecology at Kansas State University Dr. John Buckwalter.

My take away from this experience is that we are one big family in Extension and that Galaxy and ESP functions. It wasn’t just Family and Consumer Science agents, it was the interaction of 4-H agents, Agriculture and Natural Resource Agents and also Administration. We all attended the same meeting, dinners, receptions and we all had a chance to mingle, visit and get to know one another on a different level. Thank you again to the ESP Endowment Fund. I couldn’t have made this trip without your support. I hope in the future that others will have the chance to experience a conference similar to Galaxy.

## INTERNATIONAL RELATIONS COMMITTEE ANNOUNCES GRANT OPPORTUNITIES

The K-State International Program Office is now accepting international incentive grant proposals for Fall 2014.

The primary purpose of the international incentive grants is to promote internationalization of Kansas State University. The total award amount for this round of grant proposals is \$25,000.

The majority of individual grants will fall into the range of \$1,000 to \$3,000 – joint proposals may have a higher upper limit.

Award application deadline is **5 p.m. , September 15**. Awardees will be notified no later than October 5.



For more information about the international incentive grant program, contact **Kristine Young** in the international programs office at oip@k-state.edu.

**Denise Dias**  
International Relations  
Committee Chair

## MEMBERSHIP COMMITTEE

Letters of invitation to join Epsilon Sigma Phi have been sent to all Extension professionals employed 3 years or less.

The Annual and Associate membership requirements were presented to the membership and passed at the Annual Meeting last October. It is now 3 years or less to be an Associate member and 3 or more years of professional employment for Annual members. (Please refer to the membership brochure or October 22, 2013 minutes).

These are available online on our Alpha Rho Chapter website: [www.ksre.ksu.edu/esp-alpharho](http://www.ksre.ksu.edu/esp-alpharho).

Council Directors will be making personal contacts with these individuals to encourage them to join the Alpha Rho Chapter.

The committee encourages you to review the membership list on the ESP website at [www.ksre.ksu.edu/esp-alpharho](http://www.ksre.ksu.edu/esp-alpharho) (under the membership tab).

Encourage your co-workers, neighbors in local units and PFT members to join if you do not see their name on that list.

**Andrea Burns**  
Membership Chair

**Encourage your friends to join ESP!**



## STAY INFORMED.....

Minutes from the Alpha Rho Council meetings can be found at [www.ksre.ksu.edu/esp-AlphaRho](http://www.ksre.ksu.edu/esp-AlphaRho)

Council meetings are held six times per year.

Click on the "Minutes" link in the left hand navigation pane for a complete listing.



## Alpha Rho ESP Officers 2013-14

### President

Chuck Otte

Phone: (785) 238-4161

[cotte@ksu.edu](mailto:cotte@ksu.edu)

### President-Elect

Stacey Warner

Phone: (785) 532-5790

[swarner@ksu.edu](mailto:swarner@ksu.edu)

### Secretary

Nadine Sigle

Phone: (785) 346-2521

[nsigle@ksu.edu](mailto:nsigle@ksu.edu)

### Treasurer

Jennifer Wilson

Phone: (785) 537-6350

[jrwilson@ksu.edu](mailto:jrwilson@ksu.edu)

### Annalist/Historian

Doug Jardine

Phone: (785) 532-1386

[jardine@ksu.edu](mailto:jardine@ksu.edu)

### Editor

Sandra Wick

Phone: (785) 282-6823

[swick@ksu.edu](mailto:swick@ksu.edu)

### Past President and Endowment Fund Chair

M. Gayle Price

Phone: (620) 431-4530

[gprice@ksu.edu](mailto:gprice@ksu.edu)

### Extension Director's Representative

Daryl Buchholz

Phone: (785) 532-5820

[dbuchhol@ksu.edu](mailto:dbuchhol@ksu.edu)

*Knowledge for  
Life*

# ESP ENDOWMENT GRANT APPLICATIONS ENCOURAGED

As members of ESP, don't miss out on an opportunity to submit an application for funds to support your program or professional development.

The purpose of **ESP Endowment grants** is to improve the quality of educational programs offered through Extension by encouraging professional development experiences and special projects. Grant funds are available as a result of contributions made by Extension faculty, friends and supporters of the Alpha Rho Chapter, Epsilon Sigma Phi.

### Comment from a previous grant recipient:

"I was excited and honored to be the recipient of an ESP Endowment

Fund Grant which allowed me to attend the Galaxy Conference. I was able to attend leadership breakout, community action breakouts along with nutrition and family finance breakouts. Thanks to the ESP Endowment Fund Grant I was able to attend this fantastic conference."

Rhonda Gordon  
Extension Agent  
Family and Consumer Sciences  
K-State Research and Extension  
Lyon County

Consider projects related to your **Program Focus Team**, your **work unit**, or as an **individual**.

Grants funded in the past include:

- ▶ attendance at an ESP professional meeting
- ▶ professional development
- ▶ graduate studies
- ▶ projects targeted to extension professionals and/or clientele

Details for applying are located on the Epsilon Sigma Phi website at: [www.ksre.ksu.edu/esp-alpharho/doc4201.ashx](http://www.ksre.ksu.edu/esp-alpharho/doc4201.ashx)

**Grant application deadline is August 15.** Grant recipients will be announced at the ESP annual award event during KSRE Annual Conference.

Gayle Price, ESP Endowment Chair,  
[gprice@ksu.edu](mailto:gprice@ksu.edu)



**Celebrating 100 years of  
Cooperative Extension!  
Anniversary of the Smith-Lever Act,  
which officially established the  
National Cooperative  
Extension System.**