



2014 KSUMB Handbook





2014 KSUMB Staff



Director of the Marching Band	Dr. Frank Tracz
Assistant Director	Mr. Don Linn
Graduate Assistants	Alex Cook
	Chris Johnson
	Rachel Villareale
	Emily Roth
	Alex Wimmer
Percussion Graduate Assistant	Dan Haddad
Senior Administrative Assistant	Michelle Edie
Classy Cat Coordinator	Kathleen Henao
Classy Cat Choreographer	Laura Donnelly
Twirler Coordinator	Shannon Meis
Color Guard Coordinator	Sydney Topliff
Student Staff	Weston Cook
	Jasmine Bannister
	Cassi Dean
	Lizzy DeRoulet
	Aaron Fisher
	Mandy McGraw
	Ryan Smallwood
Gameday Manager	Zach Kuntz
Assistant Gameday Manager	Brett Eichman
Drum Major	Allegra Fisher
Assistant Drum Majors	Jordan Parker
	Bill Hurrelbrink
Announcer	Leroy Burke
Photographers	Scott Sewell



2014 KSUMB Section Leaders



Piccolos

SL Mary Wagoner
ASL Sam Boxberger
MI Chelsea White
MM Chelsea Blankenship

Clarinets

SL Abby Thompson
ASL Morgan Hook
MI Abigail Baeten
MM Owen Moore

Alto Saxes

SL Ryan Whelchel
ASL Ashley Herb
MI Michael Meier
MM Erik Russell

Tenor Saxes

SL Bryan Harkrader
MI/ASL Ranie Wahlmeier
MM/ASL Matt Shea

Trumpet

SL Omar Tanus
ASL Colin Halpin
ASL Brayden Whitaker
MI Caleb Kuhlman
MM Maddie Caywood

Mellophones

SL Chris Miertschin
ASL Caitlyn Sasnett
MI Bailey Bye
MM Kate Murphy

Trombones

SL Jacob Miller
ASL Marcus Grimes
ASL Bridger Schwasinger
MI Brad Martinez
MM Andrew Scherer

Baritones

SL/MI Max Dunlap
ASL Jordan Strickler
MM Sarah Nyhart

Tubas

SL/MI Xan Perkins
ASL Bryce Garver
ASL Josh Peterson
ASL Blake Morris
MM Ross Jensby

Percussion

SN Tim O'Connor
TN Ethan Wagoner
BD Brent Weaver
CY Bridget Jarvis

Classy Cats

SL Meghan Zych
ASL Claire Ross
ASL Kaitlyn Mohan
ASL Morgan Kroll

Color Guard

SL Ashley Winkleman
ASL Steven Howard
ASL Spencer Smith
ASL Naci Peters

Twirlers

SL Lauren Meis



Band Member Responsibilities



All Members of the KSUMB

- Be present and punctual to all rehearsals!
- Learn and memorize all music, drill, and commands.
- Follow orders with a positive attitude and respect those around you!

Drum Major

- Highest ranking student member of the band.
- Work directly with staff and directors to lead rehearsals.
- Teach marching and playing fundamentals to the band.
- Make sure that the band looks and sounds great!

Head Section Leader

- Primary spokesperson for the section.
- Has the final word in any section decisions both on and off the field.
- Answer any questions from rookies and other band members.
- Promote leadership qualities and give everything maximum effort.
- Ensure that all uniforms and instruments are well maintained.
- Ensure that the section looks and sounds good at all times!

Music Instructor

- Conduct music sectionals and warm-ups for your group.
- Address error detection in the band and make corrections.
- Assign part placement to members of the band.
- Address anything and everything to make sure the band sounds great!

Marching and Maneuvering Instructor

- Conduct marching sectionals and on-field marching warm-ups.
- Address proper posture and form to members of the band.
- Fix errors in drill charts and parade formations.
- Address anything and everything to make sure the band looks great!

Assistant Section Leader

- Assist the Head Section Leader in any way needed.
- Act as a positive role model to all members of the band.
- Carry out orders as needed and take command in lieu of other leaders.



KSUMB Policies & Procedures



Attendance: At 3:30 PM rehearsal starts, as signaled by Dr. Tracz or another directing staff member or drum major. Tardiness will not be accepted from any member of the band and late-comers must sign in to the attendance book at the front of the field.

If you foresee an absence or tardy, you must personally submit a PINK Absence/Tardy Form to Dr. Tracz no less than 24 hours before the rehearsal in question. In case of an emergency, contact the Band Office at 785-532-3816.

Any class conflicts that will be cause for weekly absences or tardies should be noted by filling out a YELLOW Class Conflict Form in the Band Office.

Grading: Marching Band may be taken as a letter grade class or for No Credit. No Credit registrations will still appear on your transcript. Grading is based on Attitude, Effectiveness, and Attendance.

Show up early, work hard, and make a positive contribution to the band!

Unexcused absences are subject to a drop in letter grades or dismissal from the band at the director's discretion.

Attendance Policy: When a member of the band is absent from rehearsal, an alternate will be asked to fill the spot regardless of reason for absence. If an alternate has filled your spot, this is a permanent change for that show unless changed by one of the directorial staff. No performances are optional and absence from one or more performances may result in a drop in grade, a failing grade, or dismissal from the band.

Home Game Procedure: On Saturday morning before games the KSUMB will meet at Bill Snyder Family Stadium for a final rehearsal of Pre-Game and Half-Time shows. Times announced per game. If a band member is not on the field ready to play on the downbeat of the Saturday morning rehearsal, his/her spot will be assumed by an alternate for that game's pre-game and halftime show with no opportunity to take the spot back. The member will take an alternate position and be reprimanded at the director's discretion. When in the stands at the stadium: 1. Band members will sit in their assigned sections, 2. Non-band personnel are not allowed within the band block, 3. Only assigned uniforms and caps are worn in the stands.



KSUMB Policies & Procedures Cont.



Alcohol and Drug Policy:

IF YOU ARE FOUND WITH ALCOHOL, TOBACCO, OR ILLEGAL DRUGS AT ANY TIME WHILE PARTICIPATING IN A KSUMB-SANCTIONED TRIP OR ACTIVITY YOU WILL BE IMMEDIATELY DISMISSED FROM THE BAND AND LEFT TO FIND YOUR OWN WAY HOME.

NO EXCEPTIONS!!

School-Owned Instruments:

It is encouraged that you use your own personal instrument if it is silver and approved by the staff. However, instruments are available for rental through the Instrument Manager during band camp week for the nominal fee of \$35 per semester. These instruments are issued based on availability and seniority.

YOU are responsible for the upkeep and maintenance of your instrument! You will need to purchase slide oil, cork grease, and polish and you are responsible for actually using them!

YOU are responsible for any damages caused to the instrument outside of normal wear and tear. Let your section leader or the Instrument Manager know ASAP when there is a problem with your instrument.

Instruments will be returned after the last KSUMB performance of the year in working order and with all parts intact, including neck straps, ligatures, mouthpieces, etc. Do not wait until this time to tell the Instrument Manager that your horn has been defective.

Social Media Policy:

AS AN INTERNET USER, you agree to maintain and protect the confidentiality of band information and observe the right to privacy of Band Members, Graduate Students, Professors and Band Staff. Personal information provided to the Internet must not bring disrespect, contempt or ridicule to the band, the School of Music or the University.

Regardless of your privacy settings, inappropriate postings to Facebook, MySpace, Twitter, or any other Internet, personal or social networking site include, but are not limited to:

- confidential band information
- alcohol related photos
- use of weapons
- sexually explicit photos
- slander, defamation, or any language which brings embarrassment to the band, School of Music or the University

KSUMB Policies & Procedures Cont.

Music & Drill Charts: YOU are responsible for all music, drill charts, flip-folders, flip-folder windows, lyres, pouches, and other equipment given to you throughout the year. Learn to manage your flip-folder and charts well.

If you lose your music for any pep band tune or show tune you can access and print PDF copies on the KSUMB website.

Do not switch music or drill charts with other band members. Parts and coordinates are assigned to make the band look and sound the best it can, and not everyone can play a first part!

Start memorizing show music ahead of time so that we can spend full band rehearsals focused on drill, and bring a pencil to each rehearsal!

Uniforms: Uniforms will be fitted and assigned at the beginning of band camp for all band members. These uniforms will be kept in a clean, fresh condition for every performance of the KSUMB and should be dry-cleaned after every other performance. All parts of your uniform (including spats, uniform bag, etc.) issued are YOUR responsibility to keep, maintain, and bring to every performance.

Secondary uniforms are to be worn at all events as per the direction of Dr. Tracz and the directorial staff.

There is a strict NO JEWELRY policy during all KSUMB performances. All long hair must be managed so that it is worn up and inside your “cakebox” hat during performances.

Each band member must provide all-black shoes with black soles and black socks. If you already own a pair of all-black shoes, check with a staff member to see if it is acceptable for use in the KSUMB.

Approved black shoes are available for order during band camp.

A FINANCIAL AND ACADEMIC “FREEZE” WILL BE IMPOSED ON ANY STUDENTS WHO DO NOT RETURN ALL UNIFORM PARTS, INSTRUMENT PARTS, AND EQUIPMENT AT THE POST-SEASON TIME DETERMINED BY THE DIRECTOR.



Schedule of Mandatory KSUMB



Performances & Events

August

18-24	Band Camp
28	Purple Power Play on Poyntz
29	Purple Power Play on Poyntz
30	Stephen F. Austin (Band Director Day)

September

7	K-State at the State Fair
18	Auburn (Thursday)
27	UTEP (Band Day)

October

4	Texas Tech (Ft. Riley Day)
18	Central States Marching Festival (w/Boston Brass)
24	Homecoming Parade
25	Texas (Homecoming)

November

1	Oklahoma State (Trombone Day)
8	Away at TCU (39 piece pep band – no auxiliaries)
24	Fall Break
28	Possible KU Rehearsal
29	KU
30	Marching Band Concert

December

7	Banquet
TBA	Bowl

Know that this is a tentative schedule and may have events added, removed, or changed during the year.

When the Wildcats play in a bowl game this year, you will be expected to be a part of the band for the trip. Failure to perform at the bowl game and all related events will result in a failing grade in the class and possible banishment from the KSUMB. These dates are announced in early December. Bowl Trips are between the dates of 12/23 and 1/8.



Charting Fundamentals



For each piece in Pre-Game and Halftime shows, you will be given a set of drill charts and assigned a number. Help yourself and the band by marking your music and charts accordingly to help you memorize how the music matches the drill. Colored pencils or highlighters may help with this. You will be given one set of charts, but can download a set from our webpage, www.ksu.edu/band.

Charting Codes

FM=Forward March

PS=Power Step

GS=Glide Step

BM=Backwards March

LF=Left Flank

RF=Right Flank

TTR=To the Rear

HHD=Halt Horns Down

MT=Mark Time

MG=Multi-Gate

FTL=Follow the Leader

CTS=Counts

LMT=Low Mark Time

HMT=High Mark Time

In the KSUMB many drill charts will have directions for multiple sections at different points in the music on the same page. Be sure to read through your drill chart directions thoroughly and ask a Section Leader if you have questions.

All of these terms will be taught and explained during Band Camp and throughout the course of the season as necessary. If you ever have any questions about these commands, please ask a Section Leader, Staff Member, or nearby KSUMB veteran for assistance.

Always follow the commands of your directorial staff and Section Leaders when working on drill. Your perspective may be drastically different on the field than one from a distance or from the stands.

2014 KSUMB Marching **Fundamentals**

ATTENTION ---

Posture:

- ☐ Heels together, toes together
- ☐ Legs straight, knees not locked
- ☐ Hips above ankles
- ☐ Shoulders back and down
- ☐ Head above the horizon



“GO”

Left leg snaps forward with knee locked, toe pointing to the ground. Instrument position dictated by each section.

“K-”

Left leg snaps up, thigh parallel to the ground with foot dangling, toe pointed naturally down.

“STATE”

Snap left foot to right, instrument to attention. *Remember proper posture!*

PARADE REST ---

- ☐ Left leg moves out on “REST,” while right remains stationary
- ☐ Feet shoulder width apart
- ☐ Left hand: behind back in blade, parallel to the ground, thumb on top of the blade
- ☐ Right hand: Instrument carriage depends on section





2014 KSUMB Marching Fundamentals Cont.



FACINGS

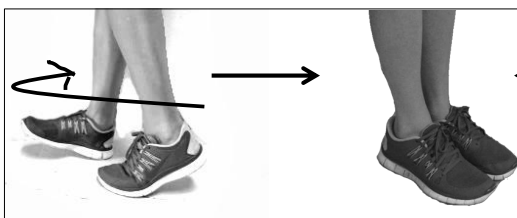


Band - Right-hace-right-hace ONE-TWO



Band - Left-hace-left-hace ONE-TWO

RIGHT FACE



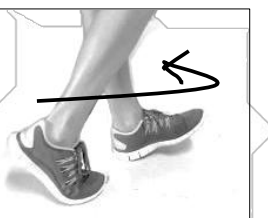
"ONE"

Rotate right foot (on heel) 90° to the right, rotate left foot (on toe) at same time. Torso moves to the right with feet

"TWO"

Right Face: snap left foot forward to meet right.
Left Face: snap right foot forward to meet left

LEFT FACE



"ONE"

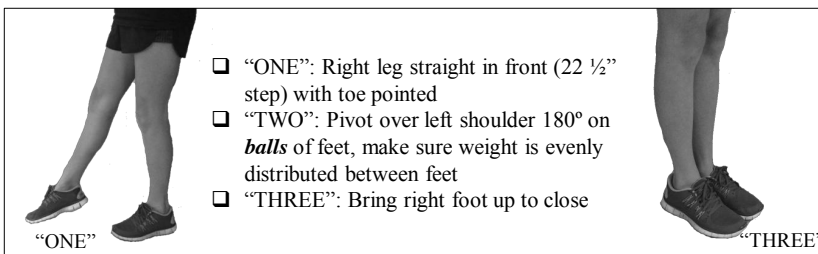
Rotate left foot (on heel) 90° to the left, rotate right foot (on toe) at same time. Torso moves to the left with feet

*Move should be very crisp. Snap everything!

ABOUT FACE



Band - About-hace-about-hace ONE-TWO-THREE



- ❑ "ONE": Right leg straight in front (22 ½" step) with toe pointed
- ❑ "TWO": Pivot over left shoulder 180° on **balls** of feet, make sure weight is evenly distributed between feet
- ❑ "THREE": Bring right foot up to close

"ONE"

"THREE"




2014 KSUMB Marching Fundamentals Cont.



TTR (TO THE REAR)

- ❑ (Similar to an About Face but “on the move”, all in ONE count)



- ❑ Right toe plants (anchor point)
- ❑ Pivot over left shoulder 180° on balls of feet, evenly distribute weight to balance
- ❑ As you turn, perform a **horn flash** (lift instrument up as defined by section leader)
- ❑ Left leg comes up parallel to ground (in a high step) ready for next step in opposite direction

MARK TIME



LOW MARK TIME

- ❑ Heels TWO INCHES off the ground (**kneecap covers tip of toes when looking down**)
- ❑ Toes never leave the ground
- ❑ Motion should be *fluid and continuous* especially in the knees
- ❑ Left heel preps on “AND” and goes down on “ONE”
- ❑ Keeping Time: Heel comes up on “and” and goes down on the beat
 - ❑ When one heel is in the air, the other heel should be planted
 - ❑ THERE IS NEVER A TIME WHEN BOTH HEELS ARE OFF THE GROUND





2014 KSUMB Marching



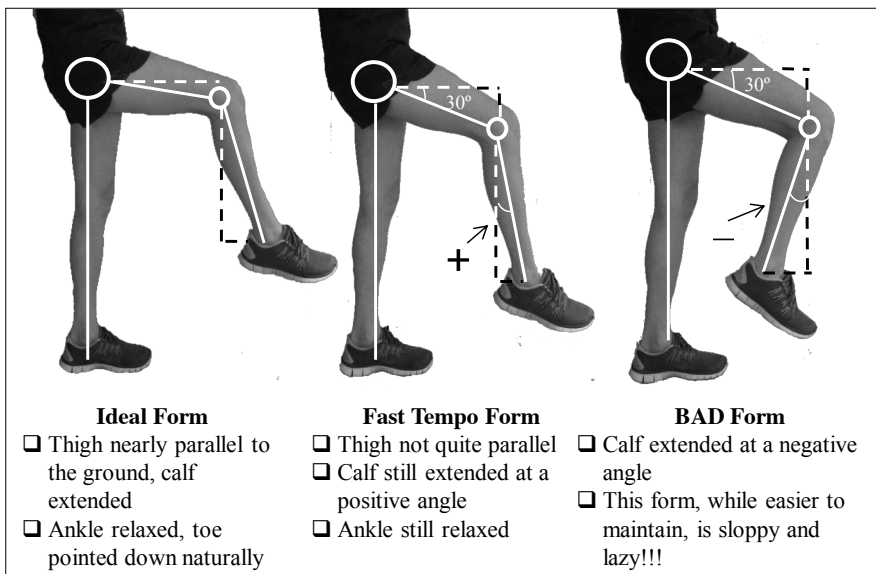
Fundamentals Cont.

HIGH MARK TIME



High mark-time move AND ONE

- ☐ AND: Lift left leg up so thigh is parallel to ground, toe is pointed down (relaxed, ankle is not locked)
- ☐ ONE: Left foot hits ground *toe* first
- ☐ With fast tempo, ensure that calves are still extended out (see below). Don't tuck under the knee



SPREAD AND FLASH

- ☐ Left foot comes out shoulder width apart, feet are parallel
- ☐ Slight bend backward from waist up, horn angle will be higher than usual
- ☐ Section leaders will address specific instrument carriage



2014 KSUMB Marching Fundamentals Cont.



UP STEP FORWARD BACK TURN TOGETHER



“UP”

Up to high march position with LEFT thigh parallel to ground, toe pointed

“STEP”

Left foot hits ground (22 ½” step)

“FORWARD”

Right leg straight in front (22 ½” step) with toe pointed, heel off of ground

“BACK”

Right leg straight behind (22 ½” step) with toe pointed to ground, heel off of ground

“TURN”

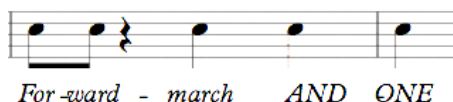
Pivot over right shoulder 180° on balls of feet, make sure weight is distributed evenly between feet

“TOGETHER”

Bring left foot up to close

FORWARD MARCH

REMEMBER MARK TIME FUNDAMENTALS AND APPLY TO FORWARD MARCH!!!



Low/ROLL STEP

- ☐ Heel hits the ground on the beat
- ☐ Roll heel to toe - every part of the foot touches the ground
- ☐ Pretend you are squeezing a tube of toothpaste on the ground (smoothly!)
- ☐ Knees bend *slightly* with each step (not straight leg)
- ☐ Upper body is stationary

HIGH STEP

- ☐ Thigh parallel to the ground, foot relaxed and dangling, toe pointed down
- ☐ No stomping. Use ball of foot to absorb impact and roll to heel during motion
- ☐ Avoid “C-back.” Torso is upright, do not lean back or forwards
- ☐ Bring knee up as if pulled by a string. Ensure that calf is kicked out at a positive angle to body (see mark time).

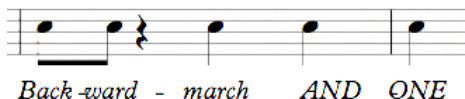


2014 KSUMB Marching Fundamentals Cont.



BACKWARD MARCH

- ☐ “AND”: up on balls of feet
- ☐ “ONE”: 22 1/2” step backward with left foot
- ☐ Heels DO NOT touch the ground
- ☐ Upper body stationary
- ☐ Do not drag feet along ground
- ☐ Pro-tip: 22 1/2” steps feel unnaturally large when backward marching



GUIDING

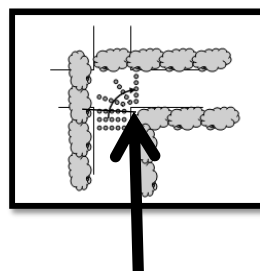
- ☐ Line up **shoulders**
- ☐ You should only see the person on your left and right, not beyond that

PARADES

- ☐ Guide **right** on straight lines

For Turns:

- ☐ Guide **INSIDE**
- ☐ Take bigger steps on Outside, Smaller on Inside
- ☐ Front to back spacing WILL be compromised around the corners
- ☐ WAIT to turn until your line reaches the intersection (outsides don't start early, see diagram)
- ☐ Don't try to be in a "straight line" with the rest of your file during turn
- ☐ DON'T SIDESTEP
- ☐ <http://www.thebeatgoesonmb.org/paradecorners/paradecorner.htm>



Turn here

REHEARSAL ETIQUETTE

- ☐ To avoid overuse of the attention command, when learning/cleaning drill:
 - ☐ When paused at a set, always keep right foot in formation when addressing issues with the form
 - ☐ Return to attention position immediately after addressing issues, locating your position, or when drum major puts his/her arms up to the ready.
- ☐ Count out loud when learning new drill sets
- ☐ As a general rule, only leadership and staff should be talking
 - ☐ Give time appropriate/efficient feedback

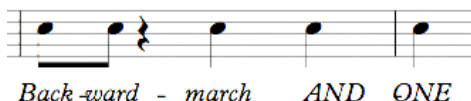


2014 KSUMB Marching Fundamentals Cont.



BACKWARD MARCH

- ☐ “AND”: up on balls of feet
- ☐ “ONE”: 22 1/2” step backward with left foot
- ☐ Heels DO NOT touch the ground
- ☐ Upper body stationary
- ☐ Do not drag feet along ground
- ☐ Pro-tip: 22 1/2” steps feel unnaturally large when backward marching



SLIDING

- ☐ Shoulders parallel to sideline/pressbox
- ☐ Support abdomen to produce full-bodied sound
- ☐ Should feel a pull in back and torso
- ☐ Feet and legs facing **straight in direction of motion**
- ☐ HORN ANGLES should ALWAYS be maintained
- ☐ Hip=30°, abdomen=60°, shoulders=90° (variations due to instrument carriage addressed by individual sections)



PARADE BLOCKS

**arrangements are subject to change based upon band numbers*

- ☐ Assign each person a **specific spot** for each block formation. Always set the same lines
- ☐ The left half of the band goes behind the right when “sixes” are called
- ☐ Leave holes for people that are gone when setting block the first time

PARADE BLOCK

- ☐ Form lines of 12.
 - ☐ Place a strong marcher on ends of the line AND in spots 6 and 7.
 - ☐ If there are extra people BEFORE the drumline, send them to the back of the block.
 - ☐ Fill from the very back line of the block if you have a hole.
- *Clarinets and Piccolos switch every other year*

Auxiliaries
Trombone
Trumpet
Mellophone
Alto Sax
-Drumline-
Tuba
Baritone
Tenor Sax
Clarinet
Piccolo

BOWL BLOCK

- ☐ Form lines of 12 PLUS a Tuba.
 - ☐ First line and last line might not have 12 people
 - ☐ same lines as Parade Block and split the section in half
 - ☐ Start with drumline and work outward.
- *Clarinets and Piccolos switch every other year*

Auxiliaries T
Piccolo T
Clarinet T
Alto Sax T
Horn T
Trumpet T
Tenor Sax T
Baritone T
Trombone T
-Drumline- T
Trombone T
Baritone T
Tenor Sax T
Trumpet T
Horn T
Alto Sax T
Clarinet T
Piccolo T





2014 KSUMB Section Handbooks



Drum Major Handbook

Brett Eichman, Jordan Parker, and Allegra Fisher

Expectations & Goals

- Arrive early to set up for rehearsals and performances.
- Have our own sectionals and be present at other sectionals.
- Display *energy*, *enthusiasm*, and *excitement* in both conducting and demeanor.
- Create an atmosphere of professionalism.
- Contribute actively rehearsals (in ways other than conducting)
 - Be more involved in rehearsal pacing.
 - Find appropriate times to leave the podium and help on the field.
- Be intentional in interacting with the band.
 - Learn everyone's name.
 - Encourage unity between sections and section leaders.
- Be approachable and accessible at all times.
- Develop and maintain a solid, healthy relationship with the drumline.
- Establish a communication and meeting system with the section leaders.
- Encourage an attitude of respect and humility throughout the band.

Piccolo Handbook

Welcome KSUMB Piccolo Section! We (the section leaders) are excited for the section this year, and are thrilled to have you on board for the 2014 season! If you ever have any questions/comments/concerns about band or college in general, please do not hesitate to ask/talk to a section leader! We are here for you! GO CATS!!

Goals for the Season:

- Have all music and drill memorized for performances!
- Continue to practice and perfect the "K-State" marching style.
- Foster feelings of unity and respect within the section and the greater band. Create and maintain a respectful environment. Get to know each member on a personal level!
- Have an awesome work ethic! It's good to be fun, but it's more fun to be good!
- Always come to rehearsals, games, and sectionals with a positive attitude!
- BE IN TUNE AND IN TONE! It is possible, and don't let anyone tell you it is not!
- Be early to everything!
- Have fun! You're attending the best university in the world. Go Cats!

Rehearsals:

- Rehearsals are required from 3:30pm to 5:20pm on Tuesday, Thursday, and Fridays of Game Weeks.
- Make sure you come prepared with tennis shoes, pencil, pouch, drill charts, music, and your piccolo! Dress for the weather; sometimes it's really hot, or cold, or rainy, or snowy. You never know with Kansas.
- Report time for rehearsals is at least 15 minutes early!

Piccolos, Cont.

- Tardiness will result in an individual meeting with the section leaders and appropriate actions will follow.
- Seek to improve every day!
- WATCH THE CONDUCTOR!
- If you have some reason why you are unable to attend a rehearsal you need to make sure to turn in a pink sheet (absence) or yellow sheet (class conflict) to the band office **BEFORE** the absence. If something comes up short notice, you should call Samantha Brown or any of the other section leaders and leave a message. If you do not reach a section leader personally, please call Michelle Edie at the K-State Band Office.

Sectionals:

- We will have a sectional every week to work on the music. (Make sure you are putting in the time outside of rehearsals to learn and memorize the music!) Music covered will include pre-game, show music, and SPITS.
- Sectionals are also required. Marching Band is a class, and sectionals are a part of that class. Work is not an excuse!
- There will also be memorization tests during sectional time. Random memorization tests will be implemented by the section leaders as deemed necessary.
- FOCUS is key! We are here for a reason, and we need to use the time wisely
- Before each sectional, please make sure your moves and counts are marked in your music. We will mark time according to these movements (it helps with memorization!) A pencil is a required and handy tool during sections.
- Sectionals last about an hour and the day and time will be determined after we receive individual schedules from everyone and pick a time that works best.
- You must be to sectionals 10 minutes before the start time, or you will be counted tardy. We want to start on time every time!

GAME DAY!

- We go to IHOP before every home game. This way, the section leaders know everyone is in attendance and everyone gets the chance to get a good breakfast before rehearsal starts (you are not required to purchase food). All members are required to be at IHOP at the agreed upon meeting time as determined by the section leaders. This will ensure that all members are present and ready to go, and gives us some time to correct any mistakes (sleeping late, missing uniform parts, etc.)
- Your carpool is your responsibility. If you are late, there will be consequences for the entire carpool based on section leader discretion.
- Piccolo Call Time is usually 30 to 45 minutes before the full band comes together. You must be on the field and ready to go by the call time set for the section.
- Triple check the night before to make sure you have everything you need for game day! (Uniform, gloves, instrument, shoes, etc.)
- Cheer on the team NO MATTER WHAT, stay into the game, and support the Cats!
- You are responsible to be on time and maintain the standards of this organization on Game Day and during performances!!

Clarinet Handbook

We are excited to have you join our family!

- Practice, practice, **practice!** Stay on top of your music; we play from memory.
- Each person must be **15 minutes** early to every rehearsal.
 - If you will be late, call an assistant section leader ASAP.
- Tennis shoes must be worn to both rehearsals **and** sectionals.
- Band camp: we are outside **all day**. Hat, sunscreen, sunglasses, water bottle, etc.
- Be prepared for rehearsals! Here is a list of things to bring to each rehearsal: clarinet, reeds, lyre, drill charts, music, flip folder, pouch, pencil & highlighter
 - Clarinet, reeds, lyre, drill charts, music, flip folder, pouch, pencil, and highlighter.
- Lyre, drill charts, music, flip folder, and pouch are provided.
- We hold weekly-required sectionals. We have frequent memorization tests.
Practice.
- Have **all** parts of your primary and secondary uniforms with you for all performances.
- If you are ever missing anything, let a section leader know ASAP.

GAMEDAY: Clarinet call time is **30 minutes** prior to the full band call time.

- We use this time to warm-up and prepare ourselves for another Wildcat Victory!
- Before every Pregame performance, we celebrate with our own GAMEDAY traditions.

We, your section leaders, are glad to have you join our section for the 2014 marching band season! If you need any assistance with music, marching, or anything else college-related, please do not hesitate to ask us or your upperclassman mentor. We are here to help you. Marching Band is truly a bonding experience and we are glad you are here!

Band Camp Goals:

1. Have all Pregame drill and music memorized.
2. Learn and execute marching fundamentals to the best of our abilities.
3. Address mistakes proactively and prevent bad habits from forming.
4. Get to know one another and build lasting friendships.

Season Goals:

1. Improve playing quality of SPITs (Stuff to Play In Timeouts).
2. Refine and retain fundamental marching techniques.
3. Continue to build section unity.
4. Never forget that marching band should be an enjoyable activity, not a burden!

Section Leaders:

Abby Thompson, SL

Abigail Baeten, MI

Owen Moore, MM

Morgan Hook, ASL

Alto Sax Handbook

The alto section is a group of dedicated and excited marchers who love the KSUMB. We strive to improve every day, be leaders on and off the field, and have fun!

Goals for Band Camp:

- All pregame music and drill memorized by the end of Band Camp.
- Stay healthy and hydrated
- Get to know everyone in the section
- Work hard and have fun!

Goals for the Season:

- Represent the altos, KSUMB, and K-State well
- Improve every day
- Get to know every section member

Rehearsals:

- Rehearsals are required every Tuesday, Thursday, and the Fridays of game weeks.
- Come prepared with everything you need including tennis shoes, saxophone, music, drill, pouch, pencil water bottle, and comfy clothes. You will be marked absent if you have to run back to get something you forgot.
- Report time is 10 minutes early to all rehearsals.
- Rehearsals last the full rehearsal period. Don't checkout early! There is always something you can be doing better!

Sectionals:

- Sectionals are required and work is not an excuse to be absent from one.
- Sectionals will not exceed an hour and will be at a time that agrees with most people's schedule.
- In the interest of getting our work done and getting home on time, we have a policy that there is no talking during sectionals. We want to be the best we can be and we cannot do this when everyone is competing with the music instructor for everyone's attention and focus.

Game Day:

- Alto Sax call time is 30 minutes before the downbeat. Meaning you must be on the field with everything you need for the rehearsal. It is crucial that you have everything you need for the day and are on time.
- No excuses for being late. The section leaders will provide a list of everything you need. You will be asked to run back to your dorm/apt/house/place of residence to get what you forgot or your spot will be taken by an alternate. This is to protect the quality of the band. We all have a part to play on this team and everyone is responsible for the final product.
- Have fun! You will have so much fun on Game Day! Get excited!!

Tenor Sax Handbook

Congratulations on joining the Kansas State University Marching Band and welcome to the Tenor Saxophone section. In this handbook we are going to explain all about the tenor saxophone section and the rewards of being a member of the KSUMB. We are very excited that you are here and can't wait to get started.

Leadership:

SL (Section Leader) – Bryan Harkrader

MI (Music Instructor/ Assistant) – Ranie Wahlmeier

MM (Marching & Maneuvering) – Matt Shea

Tenor Saxes, Cont.

It is the job of the section leaders to teach, inform, police and inspire members of the band. The Music Instructor is responsible for making sure the section continues to improve, in its playing, throughout the season. The MI also leads Sectionals. Marching & Maneuvering is responsible for teaching the new incoming members how to march and to remind the vets on the same subject. This is done primarily during band camp. The Assistant Section Leader's job is to assist all the other section leaders in their respective positions. It is also the ASL's job to take attendance at all events. The Section Leader is in charge of making sure that all the section leaders and the section is performing to the best of their ability. She/he is entrusted with making sure that the section is fully informed on all pertinent information.

Rehearsals and Sectionals:

Band Rehearsals take place at Memorial field every Tuesday, Thursday, and Fridays (before games on Saturday). These rehearsals consist of the entire band including the Color Guard, and most of the time Classy Cats and Twirlers. Here we warm-up, rehearse music, and learn marching position on the field, rain or shine. Rehearsals are about two hours long and are mandatory (exceptions can be made for tests or family/medical emergencies). It is the responsibility of the band members to bring everything they need to the field: pencils, music, drill charts, water bottles, instruments, etc. Sectionals are held on Wednesday's at 8:00 PM (subject to change), in accordance with members' class schedules. Here we work on music, balance and intonation. Sectionals, like rehearsals, are mandatory and all members are expected to be there.

Band Camp:

Band camp runs from Monday, August 18th to Sunday, August 24th, and goes from 9:00 AM to 9:30 PM. During this time we work on the memorization of music, teach newcomers marching fundamentals, and improve confidence in the new members. This is also the time when the veterans and rookies can become more acquainted and comfortable with each other. It allows the newer members to get the feel of how the band works.

Game day:

The Tenor Saxes are required to be at rehearsal 30 minutes before call time. This ensures that everyone is there and has not left anything behind. After rehearsal begins there is no time to go back home to retrieve something you may have forgot, so make sure you are prepared for everything that may happen on game day. We have many traditions on game day. The biggest tradition is what we like to call "Kiss the Kitty," which you will find out about later.

This is just a short list of what being a Tenor Saxophone in the Kansas State University Marching Band is like. So make sure that you are prepared, excited, and ready to work hard! We're going to have a great time!

Trumpet Handbook

Welcome to the 2014 K-State Trumpet Section! We are all excited for another great season of supporting Bill Snyder and our football team. In this handbook, we will outline goals, expectations, and traditions of the trumpet section. If everyone follows these rules and holds the section to a high standard, we are bound to have a successful and rewarding season.

Trumpets, Cont.

Section Leaders:

Omar Tanus-Head
Maddie Caywood-Marching
Caleb Kuhlman-Music
Colin Halpin-Assistant
Brayden Whitaker-Assistant

The job of the sections leaders is to hold the section to high standards to be the best trumpet section possible. We do this by teaching music and marching fundamentals, organizing game days and sectionals, and making sure all things marching band related get done on and off the field. We will always be available if you have any questions or concerns. The section leaders will communicate primarily through email and our Facebook group, so always be checking both.

Rehearsals and Sectionals:

The band will rehearse every Tuesday and Thursday from 3:30 to 5:30, rain or shine. If there is a home game that week, we will also rehearse on Friday at the same time. Sectionals will also be held every Wednesday night at a time determined at the beginning of the year. All rehearsals and sectionals are mandatory. Be on time to every rehearsal and be prepared. Bring all that is required for you to have a successful rehearsal: music, pouch, pencil, charts, tennis shoes, water, hat, sunscreen, etc. Be prepared to work hard.

Music:

During band camp and rehearsals, always be working for memorization and good tone. All shows will be required to be memorized, but if you devote your time in rehearsals, memorization will be easy. We devote most of our music work as a trumpet section during sectionals. Always work to play with a good tone and within the section.

Game day:

Trumpet call time will be 30 minutes before downbeat. This is a time for preparing for rehearsal, both physically and mentally. There are many traditions involved in game days, and missing out on these traditions is not an option, so be early. You will not have an opportunity to go home and grab anything once rehearsal begins, so it is crucial that you are prepared for every facet of game day.

These guidelines are just a start to what entails being a trumpet in the 2014 KSUMB. Be ready to work hard, learn lots, but most importantly, to have fun! Trumpet love.

Mellophone Handbook

Hi! Welcome to the 2014 K-State Mellophone section! We're here to make music, look good on the field, and have a blast while doing both of those things. If you have questions about the section, marching band, college life, or just need to talk to someone, contact one of our section leaders:

Section Leader:

Chris Miertschin

Assistant Section Leader:

Caitlyn Sasnett

Assistant Section Leader, Music:

Bailey Bye

Assistant Section Leader, Marching:

Kate Murphy

Mellophones, Cont.

Band Camp Goals:

1. To be EARLY is on time, to be on time is to be LATE!
2. DON'T get overwhelmed. You can do it – we believe in you!
3. Be happy! This is college, and the real world sucks! The days of band camp are long, but they are totally worth it!!
4. MAKE FRIENDS! Get to know the weird dysfunctional family that is the mellophone section.

Season Goals:

1. Unity as a section and a band – you're a part of something much bigger than yourself!
2. Flexibility – Things change, so be prepared to adjust your schedule!
3. Take care of yourself before fixing others.
4. HAVE FUN!! If you don't, then you're doing it wrong.

Other Guidelines:

1. Sectionals – These are weekly, at 9pm on Wednesday nights. They are REQUIRED unless you present Chris with a valid excuse (tests, other band events, etc.).
2. Rehearsals – Required. Duh.
3. Gameday – Mellophone call time in 30 minutes prior to band call time; you need to be there, and have fun. NO FUN IS NOT AN OPTION.
4. When in doubt, bring everything! If you're not sure what you need for a performance or rehearsal, bring more than you know is required.
5. KU sucks!

Trombone Handbook

Sectionals:

Sectionals are traditionally on Wednesday nights, but they may be at another time. Sectionals will be once a week. Once a sectional time is announced attendance is REQUIRED. If a conflict does arise making attendance impossible (e.g. illness, exam, family emergency, etc.), you will be required to fill out a pink sheet in the band office and contact a section leader. You will not be excused for work, homework, or studying for a big test the next day. Remember that marching band is a class and sectionals count towards your grade!

Rehearsals:

Tuesday, Thursday, and Friday 3:30-5:20 p.m.

Attendance is, of course, required. Band policies must be followed in regard to single and regular absences due to class conflicts and the proper paperwork must be filled out in advance.

We will polish our horns after rehearsal on Fridays before performances. We gather in the McCain courtyard. You are required to show up and thoroughly polish your instrument. You must clean up any mess you make! Also, this is a good time to organize what time carpools will meet the next morning.

Game Day:

On game day Saturdays we will gather for breakfast before rehearsal for which the location and time will be determined depending upon kickoff times. Attendance is NOT optional. You don't have to eat; you just have to be there. This helps to ensure that everybody will be on time for rehearsal later in the morning; also it will wake you up for rehearsal. This is a long-time trombone tradition that everyone enjoys.

Trombones, Cont.

Traditions:

- "Bone Ball"
- "Bone Breakfast" (breakfast before games)
- "Super Secret #8"
- And many others

General Policies:

- **Promptness-** Show up **EARLY** to everything we do. Habitual tardiness will not be tolerated.
- **Equipment-** Make sure you have the proper uniform and everything you need (i.e. music, pencil, pouch, charts, horn) for all performances and rehearsals. Pack them the night before a performance so you aren't running around at 5 a.m. looking for a lost a glove. **Respect and take care of your horn!**
- **Attitude-** Bring a good one to everything we do.
- **Memorization-** School songs, stand cheers, and halftime shows must be memorized. The faster you memorize school songs and cheers the better your life will be - they will be played countless times throughout the season and you will be happy you spent a little extra time practicing them at the beginning of the season. Half-time shows also must be memorized as we get to them. Our motto: **Memorize to mesmerize!**
- **Fun-** This is not optional. You **WILL** have it. If you don't like fun, KSUMB is not for you.

Baritone Handbook

Welcome to the 2014 K-State Baritone Section! The baritone section is a hard-working section, but also a fun section. Thanks to our section size, we're able to become a close-knit group of friends. Everything is awesome.

Important Information:

- On game days, we meet at McCain an hour and a half before call time to polish our instruments and go over any information about the day. When we get to the stadium, we play soccer (or Toneball)!
- After games, we go to Hunam's and eat Chinese. Be aware of the long-haired blonde kid that joins us.
- Don't forget to bring what you need to all rehearsals and performances! Water bottles, flip folders, necessary clothes, drill charts, etc.
- You will be introduced to the Order of the Baricone.
- Mark your music! We will be checking for this throughout the season.
- We hold music sectionals on Wednesdays, and they are required! We have the least rehearsal time out of all of the Big 12 bands, so sectionals are very important to help us succeed and be awesome. We set sectionals according to everyone's schedules, so there is no reason for you to miss one!
- On Wednesdays, we wear pink.
- Thursday nights, 8pm, Salsarita's. Be there.
- And last, but definitely not least: **DON'T BE LATE.** As Dr. Tracz says, "To be early is to be on time, to be on time is to be late, and to be late is to be left behind." So always be early!

Goals for Band Camp:

- Memorize pre-game!
- Memorize the music for both pre-game and the first show. Really, pre-game music should be memorized by the time you get to band camp, so put all of your effort into memorizing your music as soon as possible!

Baritones, Cont.

- Get to know each other! Like we said earlier, we're a smaller section, so become friends with everyone! And make good choices.

Goals for the Season:

- **BE LOUD.** We want to be heard, because the tone of our instrument is beautiful. Everyone should hear it.
- Always work on memorizing music! We want the music of every show to be memorized, so that we can focus on marching!
- Be noticed in a positive way. Always strive to be the best you can be on the field; in music, in marching, and in attitude.

If you have any questions or just want to talk about life, here's the contact info for the section leaders (you'll get our phone numbers later):

Head Section Leader/Music Instructor:

Max Dunlap

Marching and Maneuvering:

Sarah Nyhart

Assistant Section Leader:

Jordan Strickler

We are looking forward to having a fantastic year, and are excited to have you all join our section!

Sincerely,

Max, Sarah, and Jordan

Tuba Handbook

Welcome to the hardest working, most enjoyable section of the marching band. We as the tuba section strive for excellence in all that we do and rely on a high level of work ethic while taking pride in the responsibility given to us. Every day we work hard to become better in all aspects of marching and playing, propelling us to the top level of collegiate marching bands. Before we dig deeper into what you should expect this year, let us introduce this year's leadership team:

- Head Section Leader / Music Instructor – Xan Perkins
- Assistant Section Leader/Marching and Maneuvering – Ross Jensby
- Assistant Section Leader – Bryce Garver
- Assistant Section Leader – Josh Peterson
- Assistant Section Leader – Blake Moris

Tubas, Cont.

Things to know:

- All Hail Bill Snyder. He's pretty much the coolest dude ever.
- Pride – Take pride in what we do and what we stand for. Being in this band is so much more than just walking around and playing an instrument.
- Energy – Bring a lot of it. You have more fun that way.
- YGOWYPI. You get out what you put in. The more you put into each rehearsal, performance, sectional etc. the more you will receive. This not only reflects positively into the section but the entire band as well.
- Work Hard/Play Hard – No one is going to say it is easy, but man it's good. We like to do things as efficient as possible so that we have the opportunity to have fun doing what we love. Band can be really fun, but you have to put in some work. Come ready to work hard, learn lots, and most importantly, HAVE FUN!
- To Be Early Is To Be On Time – Showing up early is a great way to be prepared and have the right mindset for achieving excellence.
- Be Prepared – Showing up to every rehearsal and performance fully prepared is essential for success and the opportunity to learn and grow. We rehearse very little and move very fast so coming prepared is required.
- Attitude – Bring a good one. A bad attitude can damage the relationships with the people around you and only hinder success, both personal and the success of the band as a whole.
- Stay on top of your music; we play from memory.
- We have fun here. It's not optional. It's good to have fun, but its even more fun to be good.
- Get to know one another – This will be an immediate 400+ friend group where many create life-long friendships and connections. Take advantage of this opportunity to build a solid community of friends and colleagues.

Rehearsals:

We rehearse twice a week, **Tuesdays and Thursdays from 3:30 – 5:20 pm** and if there is a game that weekend or some sort of performance, we rehearse on **Fridays** at the same time. As tubas, we have to get our horns from McCain, and walk them over to the practice field before and after every rehearsal. This is YOUR responsibility. Our bits (mouthpiece, neck, and bits) are stored inside the bit cabinet in McCain. Outside of rehearsals and performances, we keep our bits in this cabinet at all times. **After every Friday rehearsal** before a game, we polish our tubas in McCain, put them in the cases and load them on the truck that takes them to the stadium the next morning. This usually takes until 6:30 or 7pm so please plan accordingly.

We also have a **tuba sectional** once a week on Wednesdays for one hour. These are in the evenings and the time is finalized sometime during band camp by the band staff. This sectional is **REQUIRED** because it is the only time where we get to rehearse as a section on music, memorizing, horn moves and extra tuba stuff.

Tubas, Cont.

Section Goals:

- Become a community of people who care about the success and future of the K-State Marching Band.
- Work hard and work together.
- Uphold and maintain a positive attitude and work ethic throughout the season.

We, the KSUMB family, are here to help you. We are glad that you decided to join this incredible community of people and are willing to assist in any way that we can. Do not hesitate to contact any of us at any time. Welcome to the family! This will be a season to remember. EMAW and GO CATS!

SKLZT,

Xan, Ross, Bryce, Josh, and Blake.

Twirler Handbook

Sectionals are on Tuesday and Thursday as well as Friday of home games from 2:20-3:20. In this hour proceeding full band rehearsal we will work to choreograph our feature for the upcoming show. If this goal has been met, we will review pregame or work on specific partner tricks that need attention. In the situation that we have extra performances approaching, such as parades or Homecoming, we will use any sectional time we have available or if we have a large to-do list for a busy week, we may have additional practices with time and location set as needed.

Game Days are the most exciting days with the band! We have band practice roughly six hours prior to kick-off; this time is set by Dr. Tracz. As a section, our call time is thirty minutes before the band call time. After rehearsal, there are typically pep-bands in the parking lots. Based on how many performances and pep-bands are needed that day our coordinator will then decide the tasks of each twirler. After pep-bands the twirlers and other auxiliary meet in the locker rooms of Bramlage to change and eat lunch before block band. We will be given a specific time for block band and the twirlers will be ready at least fifteen minutes prior to this time for last minute stretching and warm up. Once the band is called to attention we will parade around the stadium to the tunnel for pregame! Once pregame is complete and the crowd is ready for a Wildcat Victory, we will change if the situation allows. We will then enter the stands in the back of the band section and cheer on the Cats. Once the band is dismissed, we will quickly get our equipment needed and find ourselves on the sidelines for the run on. After halftime we will return to the stands and cheer until a KSU Victory!

Odds and Ends: To be on time is to be early. Our call time is at least ten minutes before the band call time depending on the situation. You are representing not only yourself, but also the Band and the University on and off the field. We will have a choreographed stand still routine for the fight song but other than that pep-tunes are improvised. There will be a weekly twirling section schedule and details sent out via email. We work just as hard, if not harder than the rest of the band. Get to know the members of the band, they are awesome!

Drumline Handbook

Congratulations on making the 2014 KSUMB Drumline. You have worked hard and earned a spot on the line. Now you have to work hard to keep it. It all comes down to YOU as an individual. Put in the time, take everything slow, practice PERFECT and we can be that drumline.

When practicing here are a few, quick tips:

- 1.) Practice in front of mirror
- 2.) Practice with a met
- 3.) Practice on a real drum
- 4.) Practice while standing and marking time

Next, here is a quick note regarding next year.

As a drumline, we will strive for perfection in everything we do. We will be the hardest working section in the marching band, and we will make other sections rise to our level of excellence. We - the section leaders - expect perfection from each and every one of you because we know it can be done. We have a standard to set as the K-State Drumline. We want - and you should too - for people to see us and think, "That's the best drumline I've ever seen."

Here are just a few things you can expect from us as your section leaders:

- 1.) We will lead by example to the best of our abilities
- 2.) We will push you guys to the best of your ability
- 3.) We will expect cleanliness
- 4.) We won't tolerate attitudes at all
- 5.) We will always respect you and whatever is going on in your lives

And here is what we expect from each and every one of you:

- 1.) Good rehearsal etiquette (no talking on the field, no hacking, etc)
- 2.) Good attitudes
- 3.) Good time management
- 4.) Awareness
- 5.) High levels of playing
- 6.) The ability to adapt, think, and comprehend on your own

Lastly, how we look is extremely important. Work on staying set, sticks out, sticks in, etc. Basses should never be told that the "Yamaha" on the head is leaning. Snare should never be told that their sticks angles are askew. We, as a section, should want to impress at all times and have the desire to look perfect. Whenever we walk together as a section, we will walk in formation. Basses will walk with the drums on the same shoulder. Every little detail matters. Whenever we play, everything will be exact. Precise. Stick heights, stick angles, everything. Don't settle for being an "ok" drumline. Decide now that you want to achieve excellence and strive for perfection, and then let's go for it as a section.

It's going to be a great year, but the only way we can make this work is if we trust each other, have great energy, play hard, and work harder than anyone else. Remember that when we are on the field that drumming comes first. Before anything else. When we are off the field, we can chill and be awesome.

Color Guard Handbook

Welcome to the Kansas State Color Guard! We are excited to have everybody in our family and have another great season. Being part of this team is a life changing experience, hard work and dedication on everybody's part is what makes the season successful. Our ultimate goal is supporting our boys on the football field and representing the university in the best way possible. In this handbook you will get a brief overview of what a season with the KSUMB is like.

Camps:

This year we are going to be having 3 camps to prepare everybody for the season. These camps are mandatory unless you have an emergency and have come to an agreement with our coordinator. Rookies are required to attend rookie camp in June in order to learn our pregame routines before band camp. A few weeks before band camp the whole entire section is going to get together for a technique camp, this to make sure that everybody has the same technique so that our moves during routines are sharp and together. The most important is band camp in August. Band camp is when we put pregame on the field along with our first show. It's a long week so be prepared to work hard and you will get more info as time gets closer.

Rehearsals:

For guard our sectionals are Mondays from 3:30-6:30, Tuesdays 5:30-6:30, and Thursdays 5:30-6:30. Most of this time is used to learn our routines for each show and also to polish and get them into our memory. We also rehearse with the band on Tuesdays and Thursdays from 3:30-5:30. If it is a game week we have extra rehearsals on Friday. Rehearsals are very important and dictate how our season is going to go, always be on time to every rehearsal and always come prepared.

Game days:

The band always meets hours before kickoff so that we can rehearse at the stadium. Guard will always be there 30 minutes to an hour before the band so that we can go over the show before rehearsal starts. The rehearsal and the game are very fast paced so be prepared. We come to rehearsal in our secondaries with our uniforms in our bags to change before kickoff. We will let you know what uniforms we will be wearing earlier in the week through email and Facebook. Once rehearsal begins you will not have the opportunity to go get something you forgot. It is a good idea to pack the night before and to double check before you leave for rehearsal the next day.

Leadership:

As section leaders it is our job to help you transition into a college band and to make us look as good as possible on the field. We have very high standards in the KSUMB and not giving 110% is not an option. Communication is a big part of this. We will tell you important information for games, parades and other events through email and on our Facebook group so please check these multiple times a day. We will always be there if you want extra help or even just to talk about concerns about the group. We are a family here and for our season to be the best one yet everyone needs to work hard and stay on task at all times. In this handbook isn't every detail of what you can expect as a part of KSUMB Color Guard, this year you will make many new friends and many memories. Always remember to have fun and to smile and perform!

Classy Cats Handbook

Sectionals are a time for the Classy Cats to focus on perfecting cheers, sideline performances, and halftime shows. They are also utilized to practice proper marching technique and drills. Our sectionals take place on Mondays and Wednesdays from 3:30-5:30, and Tuesdays from 7:00-9:00 pm. During Monday/Wednesday practices, our primary goal is focusing on the routines that will be performed at upcoming halftimes and games. We use this time to teach new material and make sure that it is performance ready. During Tuesday evening practice, we focus primarily on improving our dance technique and skills.

Gamedays are always exciting for our team. After we practice along with all of the other sections of the band for that day's show, we participate in pep bands around the stadium. Pep bands are an excellent time for us to engage with the crowd and get the fans excited for an awesome day of football. After pep bands, we usually go out into the crowd of tailgaters and sell posters as well as take pictures with many K-State fans. We love to interact with the fans. We perform pregame, where we march down the field at the front of the band and get to have fun doing our traditional kicklines. When the game begins, the Classy Cats are on the sidelines doing practiced dances to the music the band plays and cheering on the team. We also get to perform a feature in the halftime show, which is really our chance to have fun dancing, and show off the routines we've been focusing on. The second half of the game is spent on the sidelines cheering on the team once again.

We enjoy working with and getting to know every section of the band. Rehearsals at Old Stadium are always fun and rewarding. We get to know the members of our team very well and form a close bond like no other. To be a Classy Cat, it is important to work hard every week to put together great performances, and to love the university and what we do.





KSUMB Scholarships



Section Leaders: Stipend award to Section Leader. Assistant Section Leader: Stipend award to Assistant Section Leader

Music Instructor: Stipend award to Music Instructor.

Marching and Maneuvering Instructor: Stipend award to each Marching and Maneuvering Instructor.

Drum Major: Stipend award to each Head Drum Major. Assistant Drum Majors: Stipend award to each Assistant Drum Major.

Rod Funk Memorial Scholarship: Rod Funk was a part of the KSU Marching Band for a number of years in the mid-1970's. He was also the president of Kappa Kappa Psi, and the president of the band while he was here. He was diagnosed with a hereditary heart condition in the late 1980's and passed away in February 1993. He was a go-getter and a leader. He was not a man of the biggest size physically, but certainly a man with a huge heart and sense of drive. His family created this scholarship in 1993, shortly after his passing.

Midwest Music Scholarship: The Midwest Music Company in Salina, Kansas sponsors this scholarship.

Horner Family Scholarship: The Horner family, in memory of their parents Jack and Lorraine, sponsors this scholarship.

Stan Finck KKY/TBΣ Scholarship: Sponsored by the endowment of the late Stan Finck, Director of Bands at KSU from 1982-1991.

Alumni Band Scholarship: Sponsored by the Marching Band Alumni Association.

Shawnee Mission South High School Scholarship: This Scholarship is sponsored by Karen Nations, a Shawnee Mission South High School alumnus and former member of the KSU Marching Band. This is awarded to the oldest member of the band from Shawnee Mission South High School.

Skelton Scholars: These awards are for senior (4th year) and junior (3rd year) members of the marching band. These scholarships are donated by supporters through an "adoption" program. The award is designed to reward longevity in the band and increase the upper class retention rate. Each "Scholar" will wear an armpatch identifying them as a "Skelton Scholar."



KSUMB Awards



Most Inspirational Award: Awarded to the person who exemplifies true extrinsic and intrinsic motivation.

Wabash Award: Awarded to the student who exemplifies outstanding school spirit.

Marching Pride Award: Awarded to the section with the strongest work ethic and dedication.

Harry Erickson Award: Awarded in honor of the student composer of “Wildcat Victory” to the most giving student.

Rookie of the Year Award: Awarded to the most outstanding first year member of the band.

Section of the Year Award: Awarded to the most outstanding section of the year.

Section Leader of the Year Award: Awarded to the most outstanding section leader of the year.

Assistant Section Leader of the Year Award: Awarded to the most outstanding assistant section leader of the year.

Music Instructor of the Year: Awarded to the most outstanding music instructor of the year.

Marching and Maneuvering Instructor of the Year: Awarded to the most outstanding marching and maneuvering instructor of the year.

1st Year Award – Successful Completion of one year in band.

2nd Year Award – Successful Completion of two years in band.

3rd Year Award – Successful Completion of three years in band.

4th Year Award – Successful Completion of four years in band.

5th Year Award – Successful Completion of five years in band.

6th Year Award – Successful Completion of six year in band.

Graduating Senior Award: Each graduating senior will receive a special purple and silver plume before pre-game of the last home game. A “Holder Plaque” will be awarded at the banquet.

Kansas State University Alma Mater

I know a spot that I love full well
Tis not in forest nor yet in dell
Ever it holds me with magic spell
I think of thee, Alma Mater
K-S-U we'll carry the banner high
K-S-U long, long may the colors fly
Loyal to thee thy children will swell the cry
Hail, Hail, Hail, Alma Mater.

H.W. Jones

Wildcat Victory

Fight you K-State Wildcats
For Alma Mater Fight
Fight-Fight-Fight
Glory in the combat for the purple and the white
Faithful to our colors
We shall ever be
Fighting ever fighting for a Wildcat Victory
Go State!

Harry E. Erickson

Go to Class!!

EVERYDAY







Nickname: At the turn of the century, K-Staters were commonly referred to as the “Aggies,” which became their favorite label. The nickname “Wildcats” was given to the football team in 1915 by then head coach Chief Bender because of the squads “fighting spirit.” The nickname was changed to the “Farmers” in 1916, but head coach Charles Bachman switched it back to the “Wildcats” in 1920.

School Colors: The school color, Royal Purple, was adopted in the fall of 1896. Chosen by a committee made up of Miss Minnie L. Copeland, Miss Winnifred Houghton, and Miss Ina Holyrod, of that year’s senior class. Although K-State’s only official color is purple, white has been used as a complimentary color for many years. Silver is also a common second or third color. The phrase “Purple Pride,” which is often used in association with K-State athletics, was given rise during the tenure of football coach Vince Gibson.

School Mascot: Willie the Wildcat, a student bedecked in a large, life-like wildcat head, is Kansas State’s number one fan. Willie the Wildcats are selected yearly. The mascot is a central part of athletic events, but Willie also attends other functions around the state as a ambassador of K-State and Manhattan. Traditionally, the identity of the student portraying Willie is kept secret. A grayish bobcat (wildcat), named Touchdown XI, donated by the Clifford Roy family of Smith Center, resides in Manhattan’s Sunset Zoo. The tradition of Touchdown began in 1922 when head coach Charles Bachman helped introduce the first mascot to the campus. Once a regular at Wildcat contests, Touchdown mascots no longer attend the games.

2014 KSUMB Camp Schedule

SUNDAY, August 17

1:00pm – 5:00pm

6:00pm – 6:30pm

6:30pm – 8:00pm

MONDAY, August 18

9:00am – Noon

Noon – 1:30pm

1:30pm – 5:00pm

6:30pm – 10:00pm

TUESDAY, August 19

9:00am – 11:00am

11:00am – Noon

Noon – 1:30pm

1:30pm – 5:00pm

5:00pm – 6:30pm

6:30pm – 9:30pm

WEDNESDAY, August 20 ALL MEMBERS

8:30am – Noon

9:00am – 11:00am

11:00am – Noon

Noon – 1:30pm

1:30pm – 5:00pm

5:00pm – 6:30pm

6:30pm – 9:30pm

THURSDAY, August 21

8:30am – Noon

Noon – 1:30pm

1:30pm – 4:30pm

4:30pm – 5:00pm

5:00pm – 6:30pm

6:30pm – 9:30pm

FRIDAY, August 22

8:30am – Noon

Noon – 1:30pm

1:30pm – 5:00pm

5:00pm – 6:30pm

6:30pm – 9:30pm

Saturday, August 23

8:30am – Noon

Noon – 1:30pm

1:30pm – 4:30pm

4:30pm – 5:00pm

5:00pm – 6:30pm

6:30pm – 7:30pm

8:00pm

SUNDAY, August 24

1:30pm – 5:00pm

6:00pm

7:00pm

All Staff (Directors, GA, SS, DM, Cord.)

Meeting/Work Day (201 McCain)

Meeting – Directors, GA, SS, DM, SL (201 McCain)

Registration/Uniforms/Instruments/Music Issue

All Staff (Directors, GA, SS, DM, SL)

Challenge Course!

Lunch – TBA

Meeting, All Staff (Town Hall/Leadership Building)

Music and Marching (201/Memorial Field)

Rookies, Classy Cats, Flags, Twirlers, Perc.

Registration/Uniforms/Instruments/Music Issue

Meeting with Rookies (201 McCain)

Lunch - KKY/TBS BBQ

Rehearsal (201 McCain)

Dinner – TBA

Outside/Rehearsal

ROOKIES Rehearsal (Rookies/SL's)

VETS Reg/Uniforms/Inst/Music Issue (201)

Meeting with VETS (201 McCain)

Lunch

Rehearsal/Music/Auditions

Dinner – KKY/TBS BBQ

Outside/Marching

ALL MEMBERS

Rehearsal

Lunch

Rehearsal

Alumni Association Ice Cream Social! - Amy Renz

Dinner – TBA

Outside/Marching

ALL MEMBERS

Rehearsal

Lunch & Marching Band Shoe Fitting

Rehearsal

Dinner – Athletic Depart. BBQ with John Currie

Outside/Marching

ALL MEMBERS

Rehearsal

Lunch

Rehearsal

Alumni Band Ice Cream Social!

Dinner

Outside/Marching

Parade/Concert in Aggieville/More Food!

ALL MEMBERS

Rehearsal

Dinner – BSFS

Tradition Training @ BSFS