

Kansas Board of Regents

President

Provost and Senior Vice President

Vice President for Administration and Finance

Vice President for Research President, KSU Research Foundation

Vice President for Institutional Advancement

President, KSU Foundation

President, Alumni Association

Director, Intercollegiate Athletics Bramlage Coliseum

Director of Licensing

Assistant Vice President for Community Relations

Director of Military Affairs

- Associate to President
- Assistant to President and Director, Governmental Relations
- University Attorneys
- Director, McCain Auditorium
- Director, Art Museum
- Director, Affirmative Action

- Associate Vice President for Administration and Finance
 - Controller
 - Director, Budget Office
 - Assistant Vice President, Div. of Human Resources and Parking Services
 - Assistant Director, Employee Relations
 - Assistant Director, Employee Training
- Associate Vice President for Facilities
 - Director, Facilities Maintenance
 - Director, Facilities Services
 - Director, Facilities Planning
 - Director, Administrative Support Services
 - Director, Facilities Resources
 - Director, Facilities KSU Salina
- Director, Internal Auditing
- Director, Information Systems
- Assistant Vice President, University Police and Division of Public Safety
- Director, Laser Project

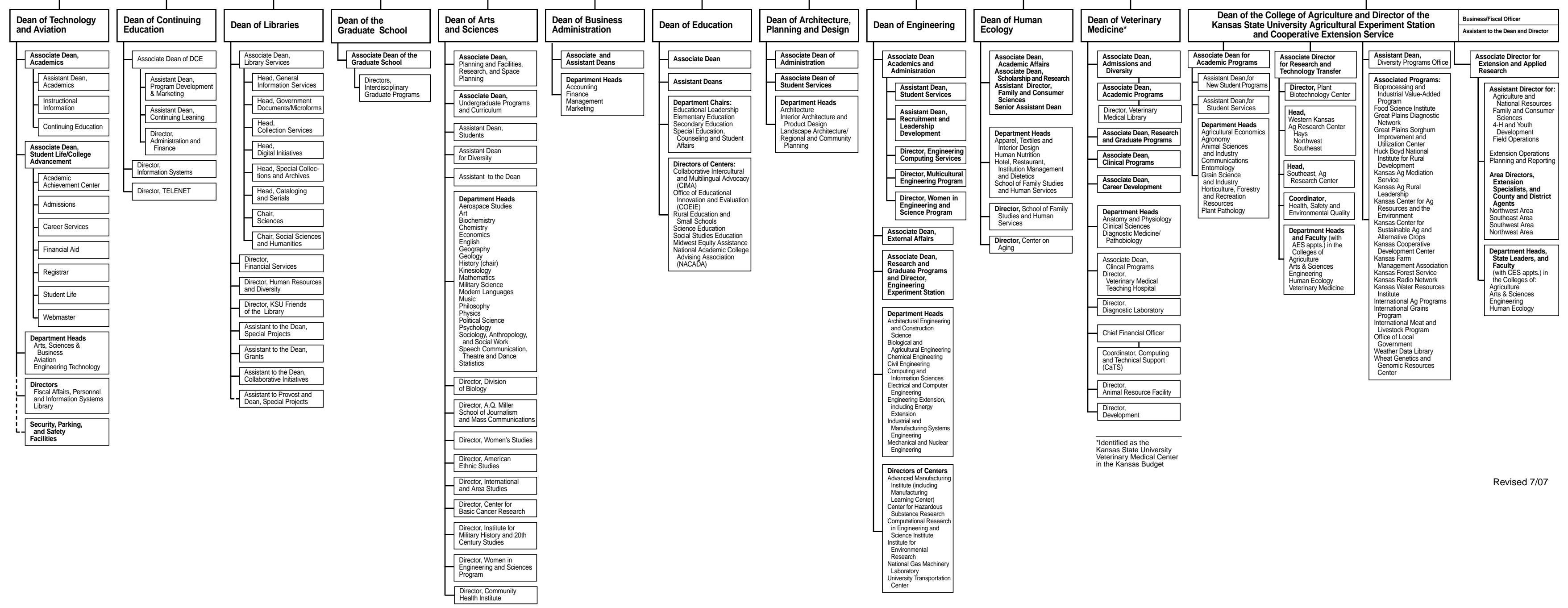
- Associate Vice President for Research
 - Directors, Central Research Services, Biotech Core Facility, Electronics Design Laboratory
 - Assistant Vice President, Preaward Services
- Associate Vice President for Research Compliance and University Veterinarian
 - Compliance Committees Animal Care and Use, Biosafety, Human Subjects
 - Director, National Agricultural Biosecurity Center
 - Director, Biosecurity Research Institute
- Vice President KSU Research Foundation

- Vice Provost for Information Technology Services
 - Associate Vice Provost for Information Technology Partnerships
 - Associate Vice Provost Information Technology Services
 - Director, Computing and Telecommunication Services
 - Director, Information Technology Assistance Center
 - Director, Mediated Instruction
 - Director, Data & Information Administration
 - Director, Educational Communications Center
 - Director, Universal K-State

- Associate Vice President and Dean of Student Life
 - Assistant Vice President, Admissions, Student Financial Assistance
 - Director, Greek Affairs
 - Assistant Vice President, Housing and Dining Services
 - Assistant Vice President, K-State Student Union
 - Director, New Student Services
 - Director, Recreational Services
 - Registrar
 - Associate Dean, Salina College Advancement
 - Assistant Vice President, Leadership Studies and Programs
 - Assistant Vice President, Office of Student Life
 - Adult Student Services
 - Student Activities and Services
 - Women's Center
- Associate Vice President for Educational and Personal Development Programs
 - Director, Educational Supportive Services
 - Director, McNair Scholarship Program
 - Director, Upward Bound Program-Manhattan
 - Director, Upward Bound Program-Salina
 - Director, Upward Bound Math and Science Program
 - Director, Academic Assistance Center
 - Academic and Career Information Center
 - Director, Career and Employment Services
 - Director, Disabled Student Services
 - Director, Student Health Center
 - Director, Counseling Services
 - Alcohol and Other Drug Education
 - ACT Center
 - Director Developing Scholars Program
- Assistant Vice President for University Relations and Director of Media Relations and Marketing
 - Director, University Photographic Services

- Associate Provost
 - Director, Assessment
 - Director, Planning and Analysis
 - Summer School
- Assistant Provost
 - Director, Academic Services
 - Director, Honor and Integrity System
 - Director, University Honors Program
 - Director, Developing Scholars Program

- Administrative Director
 - Directors, English Language Program International Program Support International Student Center International Student Recruitment Study Aboard
 - Director, Center for the Advancement for Teaching and Learning
 - Director, Center for Engagement and Community Development



*Identified as the Kansas State University Veterinary Medical Center in the Kansas Budget