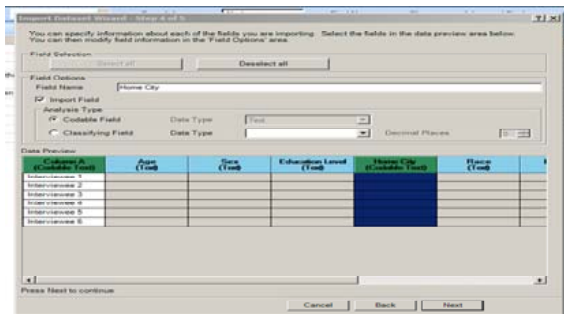


Handling Survey, Questionnaire, Interview, Focus Group, Panel Session, and Delphi Study Data in NVivo 11 Plus

	Surveys, Questionnaires	Interviews	Focus Groups, Panel Sessions
All Prior Lead-up Work	Research Design IRB / Human Subjects Approvals Instrument Design Participant Sampling Data Collection Transcription	Research Design IRB / Human Subjects Approvals Instrument Design Participant Sampling Data Collection Transcription	Research Design IRB / Human Subjects Approvals Instrument Design Participant Sampling Data Collection Transcription

Data Cleaning and Processing	<ul style="list-style-type: none"> Digitizing Analog Files Extracting Qualitative Data from Online Platforms and Sorting (selecting, alphabetizing) Naming Files Consistently De-identifying Names Formatting Files for Ingestion 	<p>SOME NEW FEATURES IN NVIVO 11</p> <ul style="list-style-type: none"> Sentiment Analysis (positive, negative, reported out in intensity matrices) Automated Concept Extraction (high-dimensional data extractions) On-the-fly (adjustable) Queries Automated Case Comparisons (with related data visualizations) Light Social Network Analysis (with related data visualizations)
Importing Datasets with Immutable Characteristics / Attributes	<p>COMMON DATA STRUCTURES</p> <ul style="list-style-type: none"> Text Format(s): .txt, .doc, .docx Data Worksheet(s): .xlsx, .xl, .csv 	

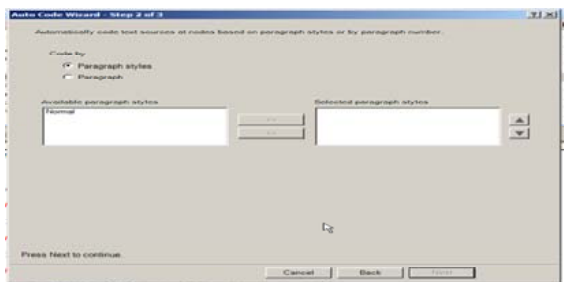
“Codable” (Mutable) vs. “Classifying” (Immutable) Columns of Data from a Dataset



- Making some data immutable (unchangeable, once ingested into the project)
- Making some data mutable (changeable, editable, updatable)

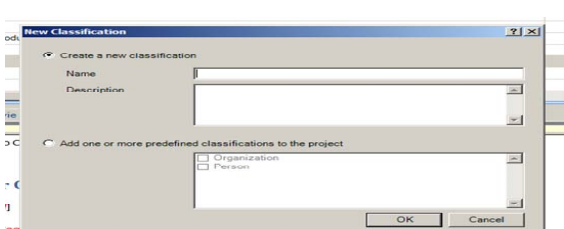
INGESTING DATASETS FOR CODING
 Upload dataset into Sources; Click on dataset to activate options
 Create Tab -> Classifications Area -> Classify Nodes from Dataset (Wizard)
 Identify “Respondents” nodes and Attributes Features ...

Processing Text Files for Easy Node Creation	<h3>Auto Code Wizard by Paragraph Style (or Paragraph)</h3> <ul style="list-style-type: none"> Being able to pull out some text to be nodes, whether: <ul style="list-style-type: none"> Q1, Q2, Q3 (questions); Interview subjects’ names; Case 1, Case 2, Case 3 Researchers still have to code to those nodes (once created); this procedure only creates nodes in NVivo
---	---



USING STYLE-BASED AUTOCODE WIZARD TO INGEST DATA
 Upload pre-processed text (by style) into Sources; Click on text to activate options
 Analyze Tab (in Ribbon) -> Coding Area -> AutoCode (Wizard)
 AutoCode by Text Type (May be Applied to .xlsx, .csv, .txt, .doc, .docx, etc.

Node Classifications / Classification Sheets	<h3>Node Classifications for Enabling Person or Organization Based Demographic Classifications and Matrix Coding Queries Using Attribute Conditions</h3> <ul style="list-style-type: none"> Classifying nodes (as “case nodes”) can be used with mass ingestion of individual interview files (as person case nodes) [or coding already uploaded text-based files (as case nodes)] Running matrix queries based on case nodes (by immutable attributes or characteristics), based on classification sheet attributes Running matrix queries based on “attribute condition” of a “person” or “organization” or customized node
---	--



REVISING CLASSIFICATION SHEETS AND ATTRIBUTES AND ATTRIBUTE VALUES
 Navigation View -> Classifications -> Source / Node Classifications and Relationship Types -> General Attributes / General Values (in Attribute Sheets)